

Table 2 of length tolerances

Over	Up to and including	Tolerance (+)
0	305	+19
305	915	+45
915	1830	+56
1830	3660	+89
3660	7320	+165
7320	14640	+317
14640	30500	+622
30500	>	+2% of length

ITEM	QTY	DESCRIPTION	MATERIAL
1	1	HOUSING	PBT YELLOW
2	4	SHELL	NICKEL PLATED BRASS
3	2	PROTECTING CAB	PP
4	4	O-RING	VITRON
5	5	FIBER-OPTIC	GRILLAMID
6	1	PCB	-
7	16	CONTACT	GOLD PLATED BRASS
8	1	CABLE PLATE	PBT YELLOW
9	5	LABEL	ABS
10	-	POTTING MATERIAL	RESIN PU55FL
11	-	POTTING MATERIAL	RESIN HARDENER
12	-	SEE TABLE 1	-
13	1	OVERMOLDING	PVC YELLOW
14	1	COUPLING NUT	AL BLACK ANODISED
15	1	INSERT	PVC YELLOW
16	12	CONTACT	GOLD PLATED BRASS

ENTER DESCRIPTION EC NO: IPG2012-0918 DRW:ULETTENMEIER 2012/05/22 CHK:RSILLER 2012/05/23 APPR:CBURGER 2012/05/29	QUALITY SYMBOLS ▽=0 ◻=0	GENERAL TOLERANCES (UNLESS SPECIFIED)		DIMENSION STYLE MM ONLY	SCALE 1:1	DESIGN UNITS METRIC	THIRD ANGLE PROJECTION
		4 PLACES ± --- ± --- 3 PLACES ± --- ± --- 2 PLACES ± 0.1 ± --- 1 PLACE ± 0.2 ± ---	mm INCH	DRAWN BY DATE ULETTENMEIER 2011/11/07	TITLE MPIS M12 MC PNP NPN 4P 4PT 12P AC FE MA STR PUR PVC MA XM		
		ANGULAR ± 2 °		CHECKED BY DATE ZISMAYILOV 2011/12/14	APPROVED BY DATE CBURGER 2011/12/20		
		DRAFT WHERE APPLICABLE MUST REMAIN WITHIN DIMENSIONS		MATERIAL NO. SEE TABLE 1	DOCUMENT NO. SD-120005-019		
A1	REV	SIZE A3		THIS DRAWING CONTAINS INFORMATION THAT IS PROPRIETARY TO MOLEX INCORPORATED AND SHOULD NOT BE USED WITHOUT WRITTEN PERMISSION			

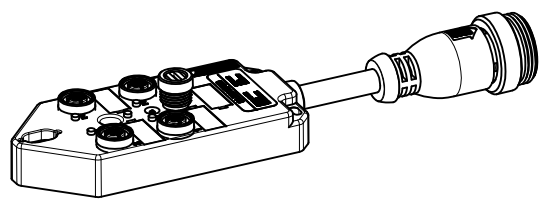
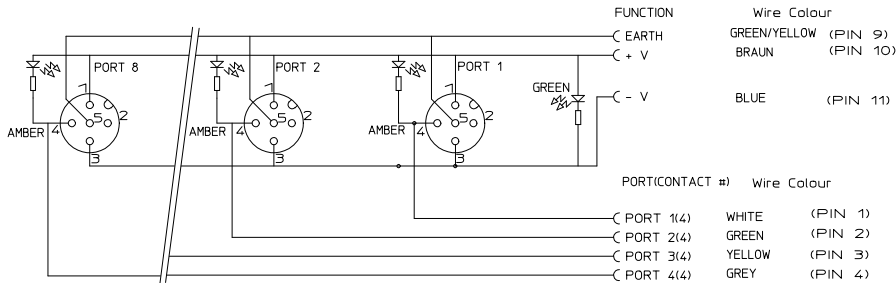


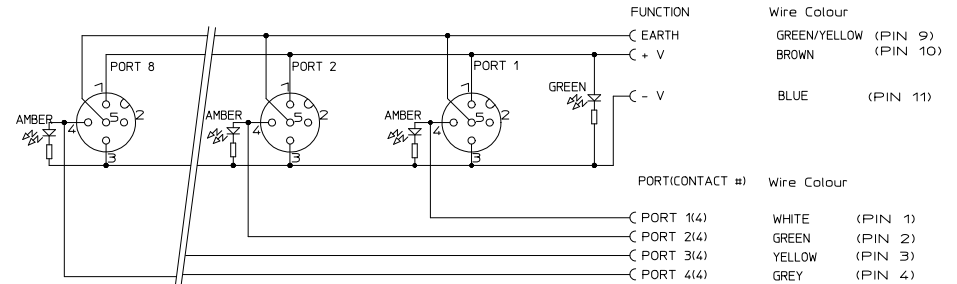
TABLE 1

MOLEX PN	ENG. NO.	DESCRIPTION	CABLE	L - lenght[M]
1200051033	BTY406N-FBP	MPIS M12 MC NPN 4P 4PT 12P AC FE STR PUR MA STR 0,3M	CABLE PUR BLK 3X0.75 8X0.34 SM	0.3
1200051034	BTY406P-FBP	MPIS M12 MC PNP 4P 4PT 12P AC FE STR PUR MA STR 0,3M	CABLE PUR BLK 3X0.75 8X0.34 SM	0.3

Wiring Diagram NPN



Wiring Diagram PNP



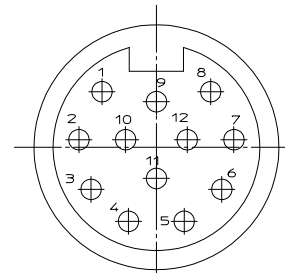
GENERAL CHARACTERISTICS:

NOMINAL VOLTAGE: 10-30 V DC
 RATED VOLTAGE: 32 V EFF.
 POLUTION DEGREE: 3
 RATED CURRENT: 4 A PER PORT / 12 A MAX: TOTAL
 CONTACT RESISTANCE: ≤ 5 mOHM
 ISULATION RESISTANCE: > 10⁹ OHM
 IP DEGREE OF PROTECTION: IP 68 REFER TO TEST SUMMARY TS-120005-016

TEMPERATURE RANGE: WITH PUR CABLE (CABLE PUR BLK 3X0.75 4X0.34 SM) -5°C / +90°C
 WITH PVC CABLE (ROVV 19AWGx3C+22AWGx4C) -10°C / +80°C

FLAMMABYLITY: Insert: V0
 HOUSING: V0

PACKAGING: CABLE LENGTH OVER 5M: BAG, STRINGED, 450X500
 P/N: 908487016
 CABLE LENGTH UP TO 5M: BAG 200X300X 05
 P/N: 908486937



CONNECTOR FACE VIEW

ENTER DESCRIPTION EC NO: IPG2012-0918 DRW:ULETTENMEIER 2012/05/22 CHK:DRSTILLER 2012/05/23 APPR:CBURGER 2012/05/29	QUALITY SYMBOLS ▽=0 ◻=0	GENERAL TOLERANCES (UNLESS SPECIFIED)		DIMENSION STYLE MM ONLY		SCALE 1:1	DESIGN UNITS METRIC	THIRD ANGLE PROJECTION	
		4 PLACES ± --- ± ---	DRAWN BY ULETTENMEIER 2011/11/07	TITLE MPIS M12 MC PNP NPN 4P 4PT 12P AC FE MA STR PUR PVC MA XM					
		3 PLACES ± --- ± ---	CHECKED BY ZISMAYILOV 2011/12/14	APPROVED BY CBURGER 2011/12/20					
		2 PLACES ± 0.1 ± --- 1 PLACE ± 0.2 ± ---	MATERIAL NO. SEE TABLE 1		DOCUMENT NO. SD-120005-019		SHEET NO. 2 OF 2		
DRAFT WHERE APPLICABLE MUST REMAIN WITHIN DIMENSIONS		THIS DRAWING CONTAINS INFORMATION THAT IS PROPRIETARY TO MOLEX INCORPORATED AND SHOULD NOT BE USED WITHOUT WRITTEN PERMISSION							