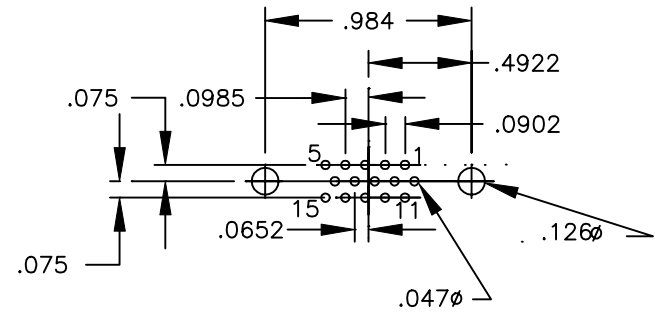
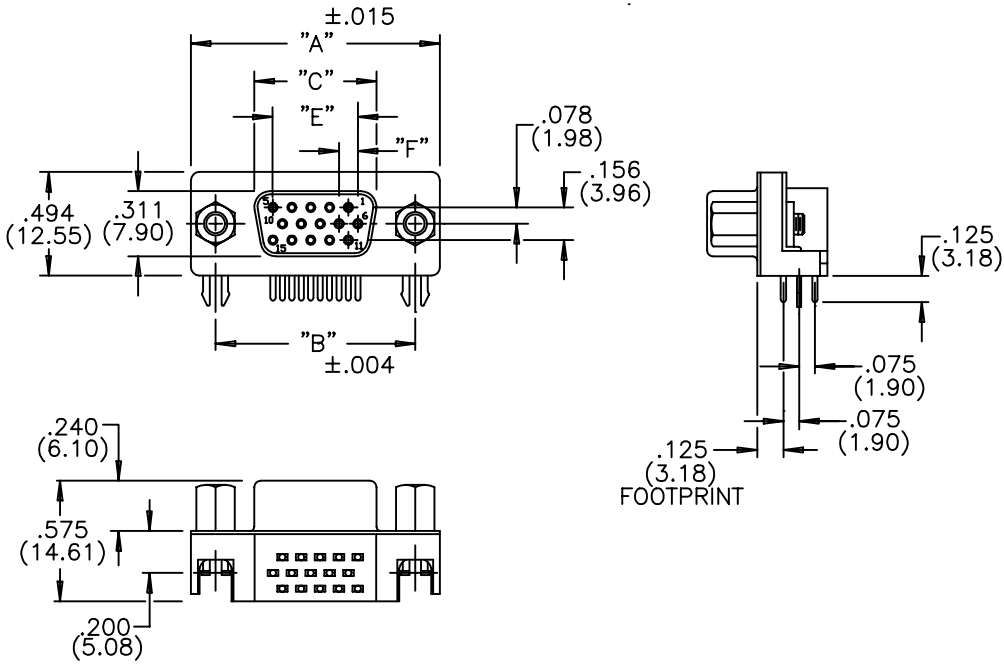


DESCRIPTION: HIGH DENSITY .125" FOOTPRINT FEMALE



MATERIALS:

- INSULATOR: THERMOPLASTIC POLYESTER, UL94V-0 CHEMICAL RESISTANCE, COLOR BLACK
- SHELL: STEEL, NICKEL PLATED
- CONTACT: PHOSPHOR BRONZE
GOLD FLASH IN MATING AREA
TIN-LEAD PLATING ON TAIL ENDS

ELECTRICAL:

- CURRENT RATING: 2 AMPERES
- DIELECTRIC WITHSTANDING VOLTAGE: 1000VAC rms AT SEA LEVEL
- INSULATION RESISTANCE: 5000 MEGOHMS MIN.
- CONTACT RESISTANCE: 10 MILLIOHMS MAX.
- WORKING TEMPERATURE: -55° TO +125° C

193-015-213-XX1

SERIES _____

NUMBER OF CONTACTS _____

GENDER _____

2 = FEMALE (NO GROUND INDENTS)

PC MOUNT _____

NICKEL SHELL _____

HARDWARE OPTIONS: _____

53 = 4-40 INSERT WITH BOARD LOCKS

56 = 4-40 STANDOFFS WITH BOARD LOCKS

NUMBER OF CONTACTS	"A" Inch (mm)	"B" Inch (mm)	"C" Inch (mm)	"E" Inch (mm)	"F" Inch (mm)
15	1.214 (30.84)	.984 (24.99)	.642 (16.30)	.405 (10.29)	.090 (2.29)

	THESE DRAWINGS AND SPECIFICATIONS ARE THE PROPERTY OF NorComp AND SHALL NOT BE REPRODUCED, COPIED OR USED AS THE BASIS FOR THE MANUFACTURE OF SALE OF APPARATUS WITHOUT WRITTEN PERMISSION.		DRAWN: PAM JENKINS	DATE: 5-9-01
			CHECKED:	DATE:
<h1>NorComp</h1>		SCALE:	SHEET 1 OF 1	REV 2
		DWG NO. 193-015-213-XX1		