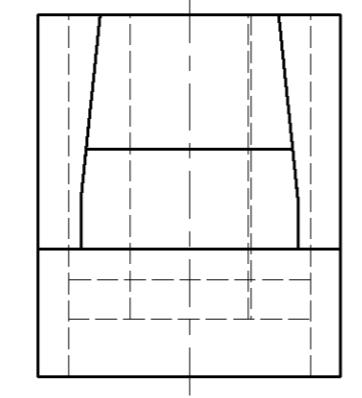
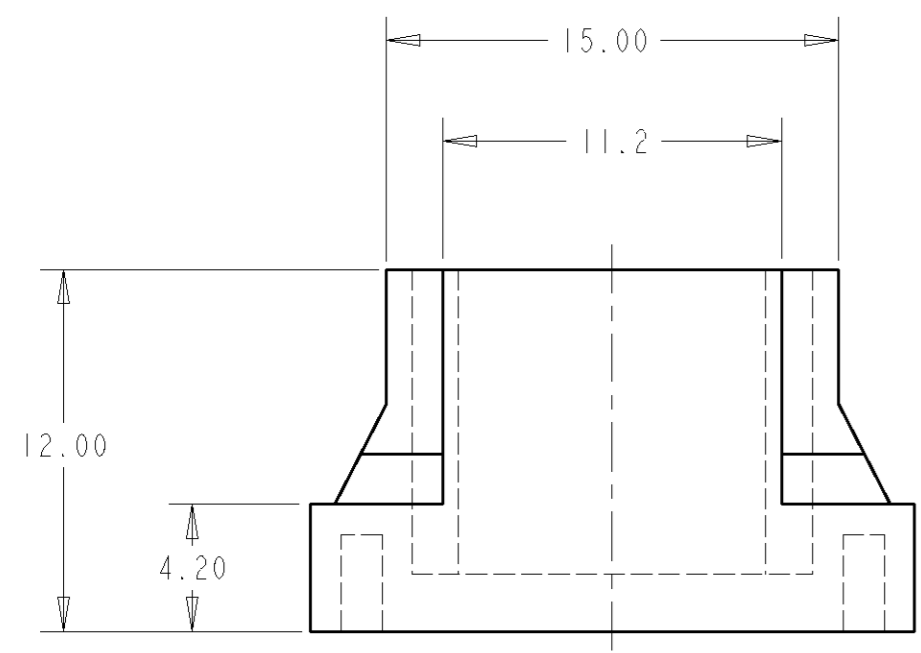
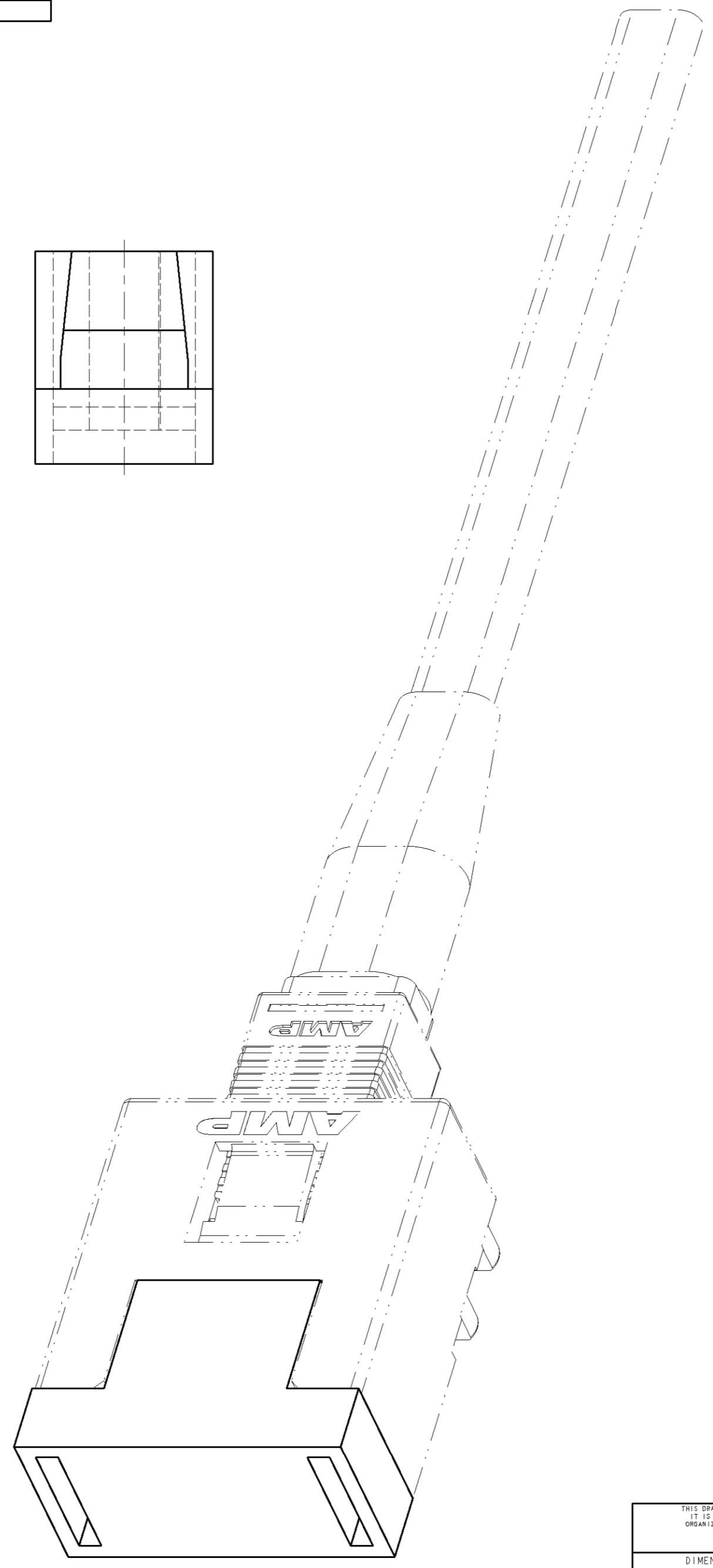
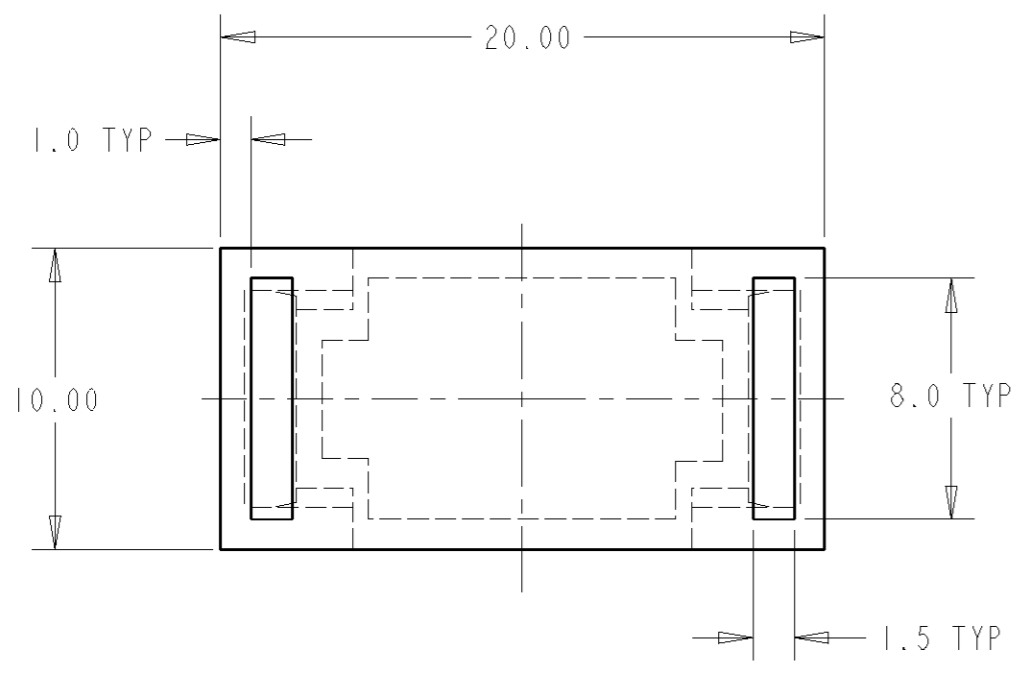


LOC	DIST	REVISIONS					
		P	LTR	DESCRIPTION	DATE	DWN	APVD
CE	16		A	REV PER EC 0A00-0572-97	19NOV97	TG	-
			B	REVISED PER ECN 0A00-0050-99	07MAY99	JDL	LAB
			<b>B1</b>	<b>REV PER ECO-10-000445</b>	<b>11JAN10</b>	<b>KK</b>	<b>AEG</b>



- 1 MATERIAL: THERMOPLASTIC ELASTOMER.
- 2 BULKPACKAGE 25 PIECES.
- 3. RETENTION FORCE: 1/2 LB MIN.
- 4 **OBsolete PARTS: OBSOLETE CIS STREAMLINING PER D.RENAUD/D.SINISI**



SCALE 4:1

2	4	RED	492578-7
2	2	BLUE	492578-5
2	2	GREEN	492578-3
2	2	BLACK	492578-1
		COLOR	PART NUMBER

THIS DRAWING IS A CONTROLLED DOCUMENT FOR AMP INCORPORATED. IT IS SUBJECT TO CHANGE AND THE CONTROLLING ENGINEERING ORGANIZATION SHOULD BE CONTACTED FOR THE LATEST REVISION.		DWN I.GREEN 17SEP97 CHK L.BARKUS 29OCT97 APVD K.MONROE 29OCT97	AMP Incorporated Harrisburg, PA 17105-3608
DIMENSIONS: mm [ INCHES ]	TOLERANCES UNLESS OTHERWISE SPECIFIED: 0 PLC ± 1 PLC ±0.1 2 PLC ±0.01 3 PLC ±0.001 4 PLC ±0.0001 ANGLES ± FINISH -	PRODUCT SPEC - APPLICATION SPEC - WEIGHT -	NAME DAUGHTER CARD HOUSING DUST COVER SIZE A2 CAGE CODE 00779 DRAWING NO. 492578
MATERIAL -		CUSTOMER DRAWING	SCALE 4:1 SHEET OF REV B1