

REVISIONS					
REV	DATE	DESCRIPTION	ECN	BY	CHK
H2	09APR15	REVISED	ECR-15-005364	KF	RK
H3	16MAR2017	REVISED	ECR-16-003439	KF	TK
H4	23OC12017	REVISED	ECR-16-007071	DM	TK
H5	15NOV2022	REVISED PER ECR-22-154015		RK	MT

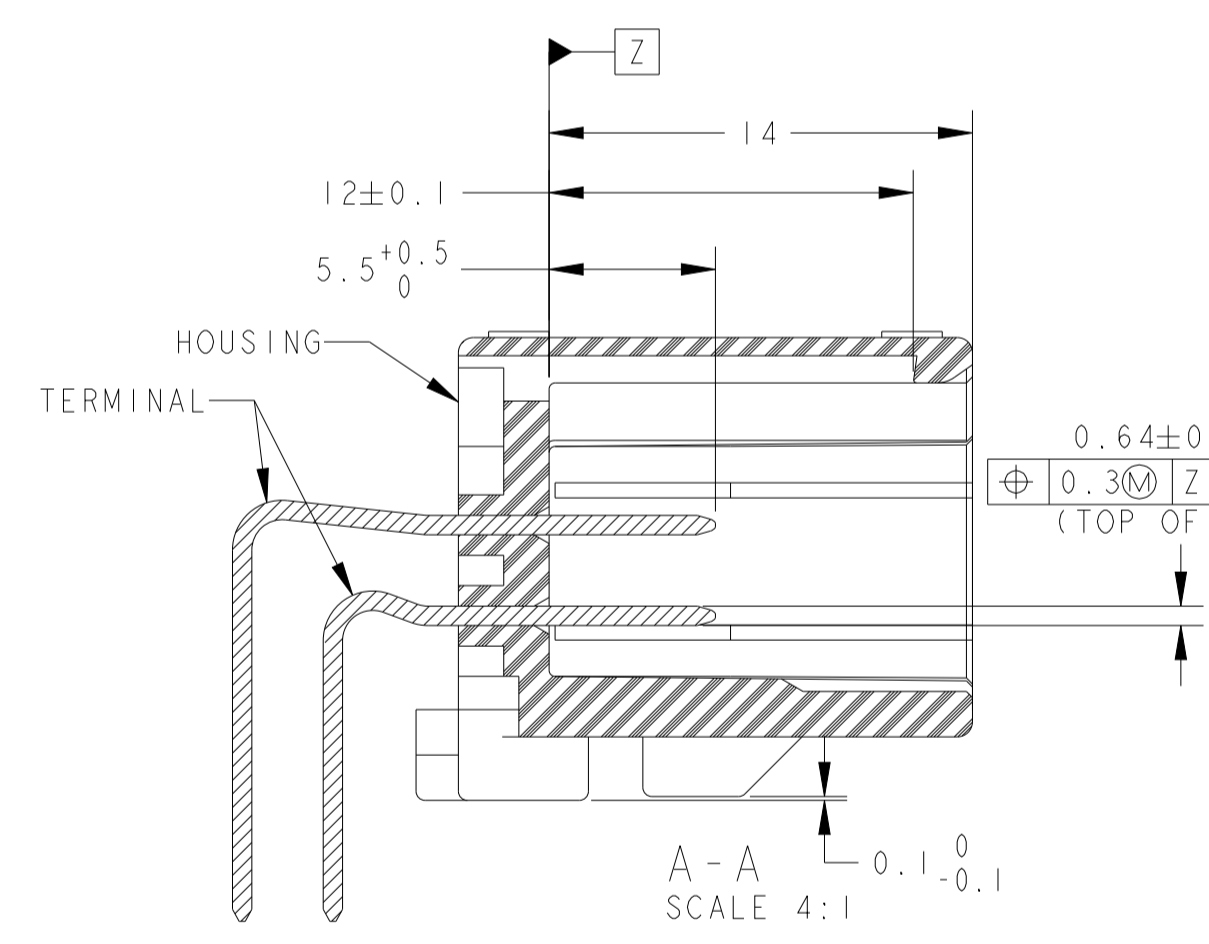
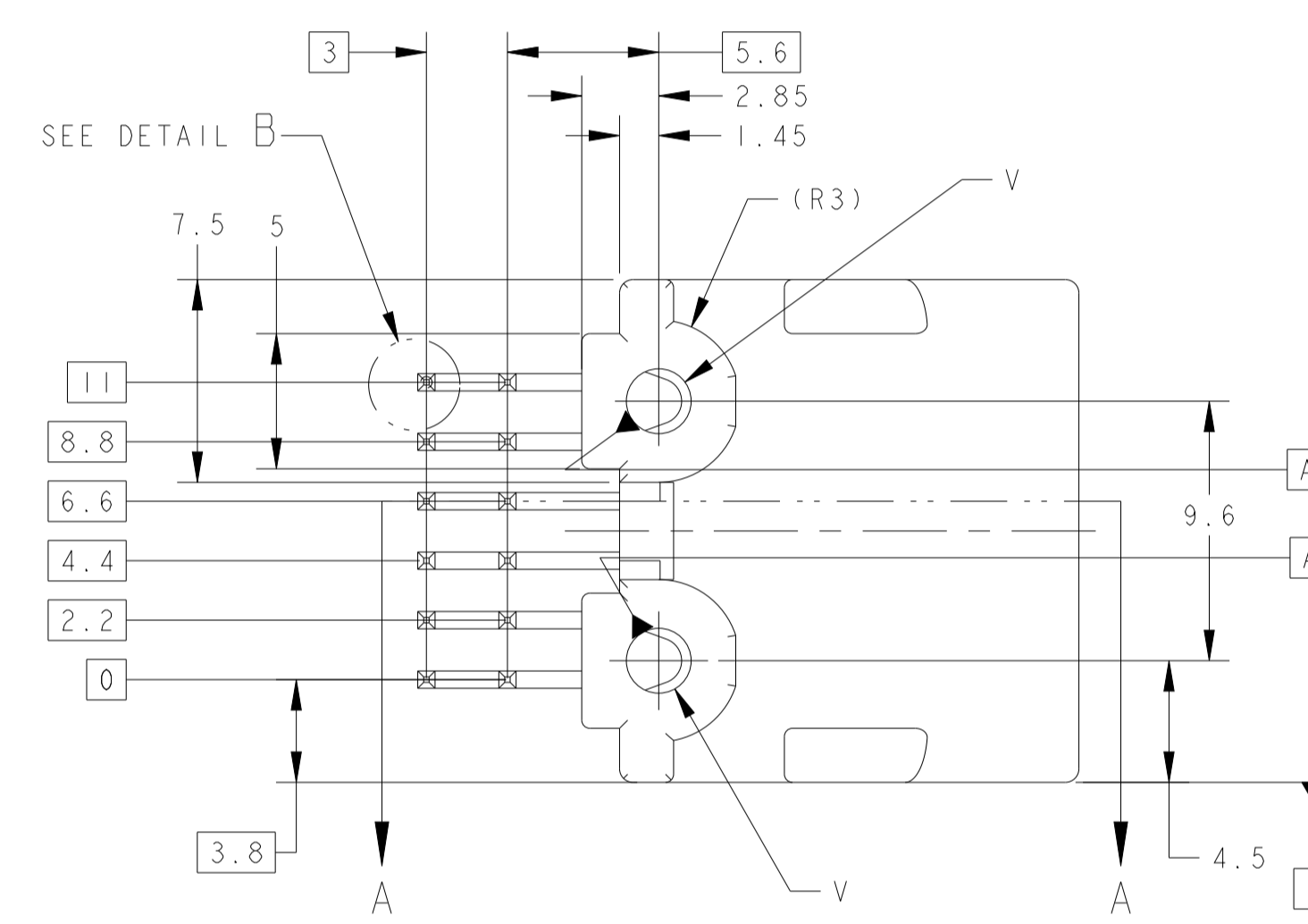
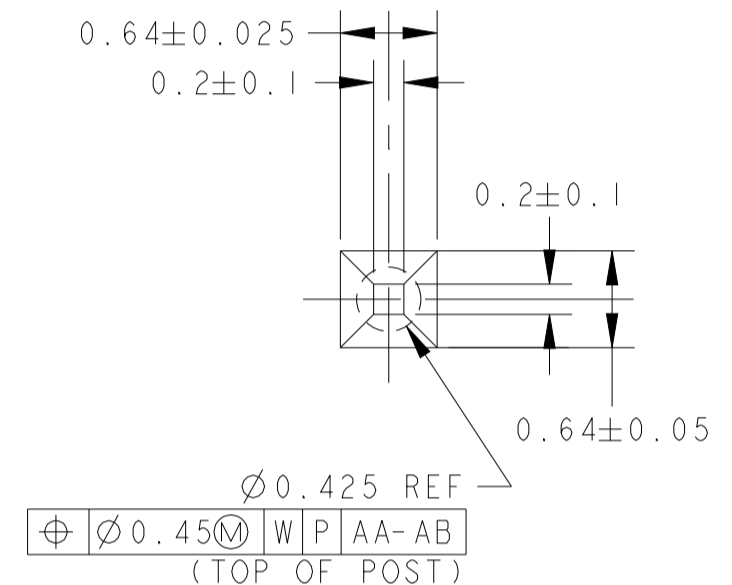
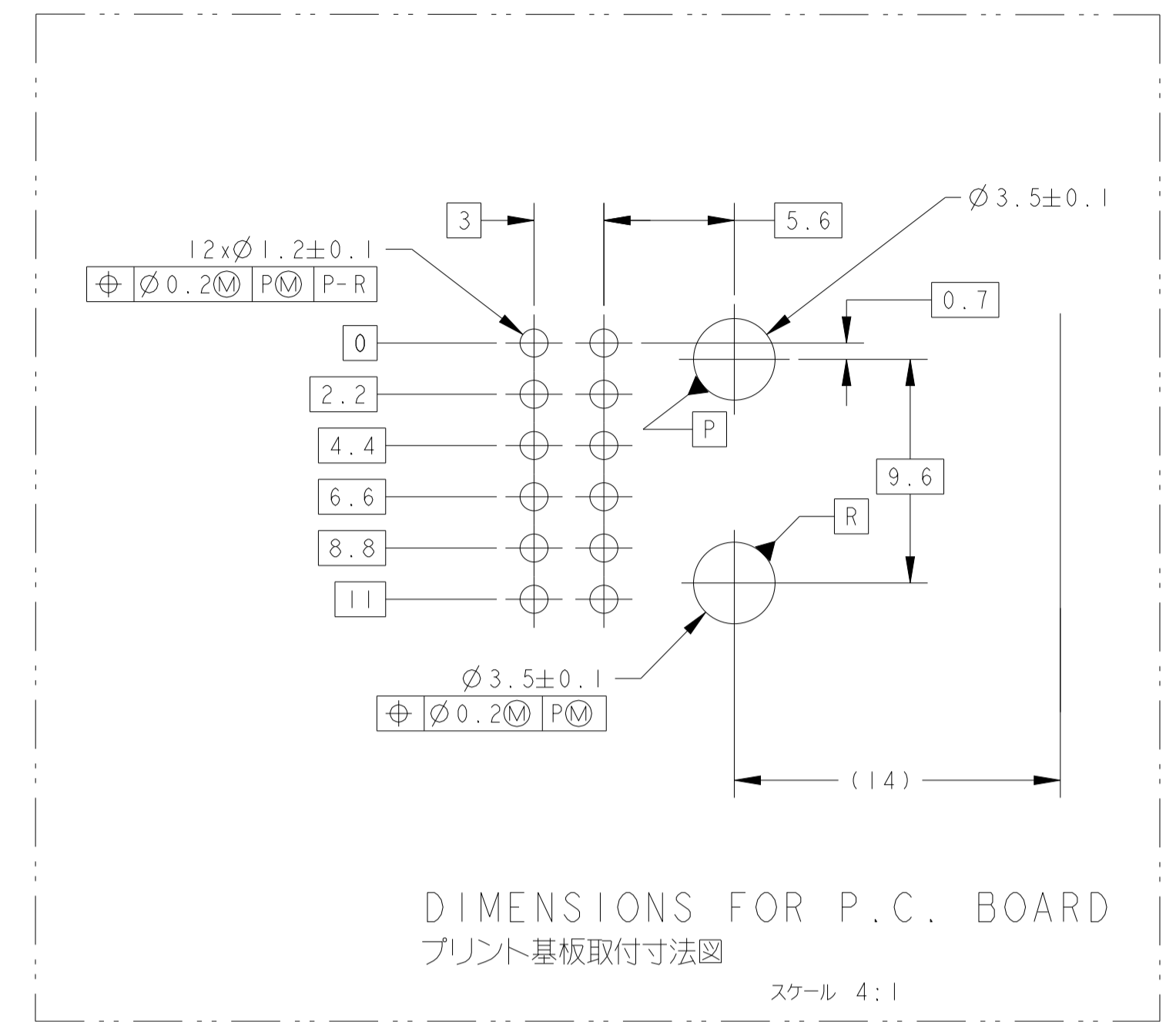
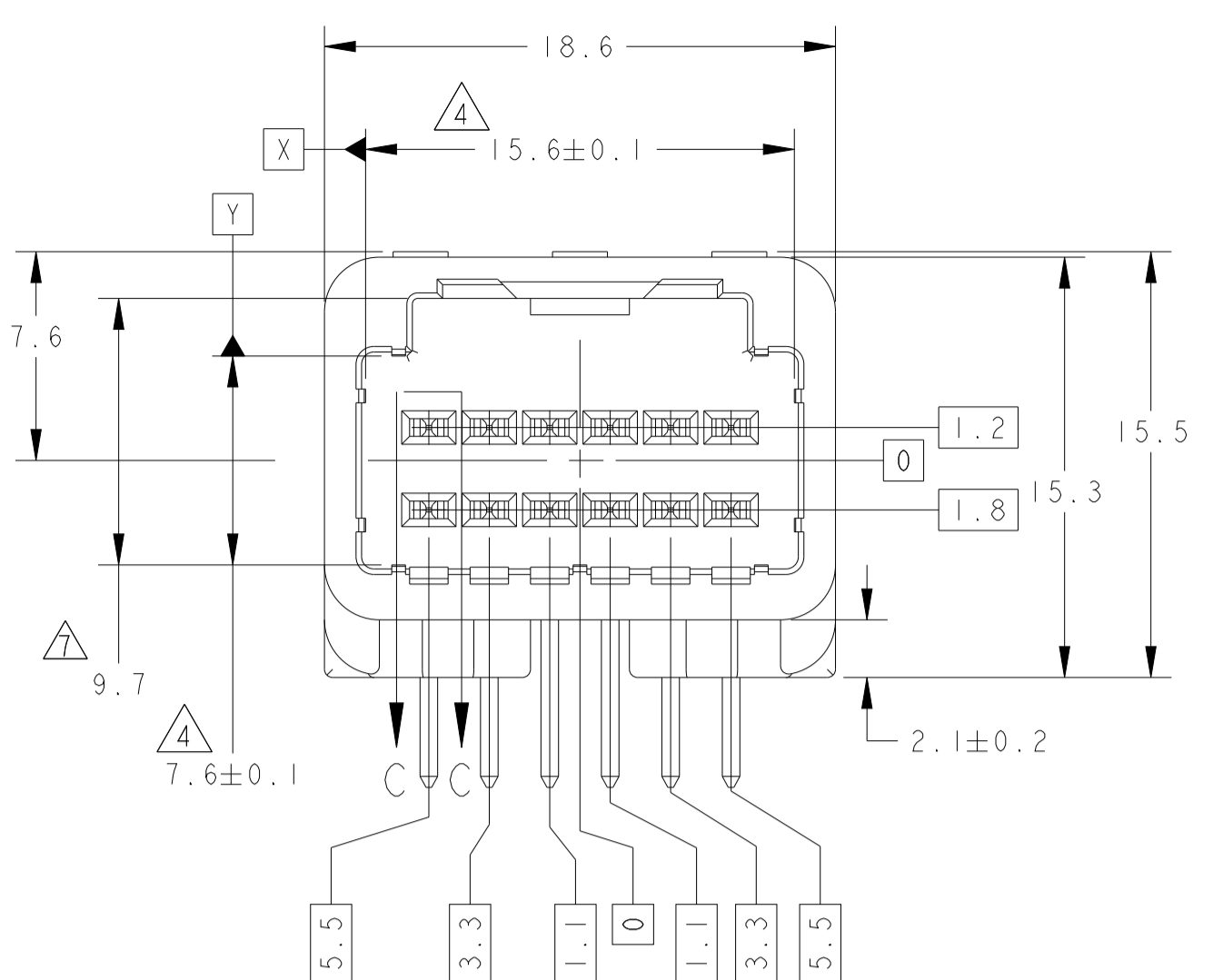
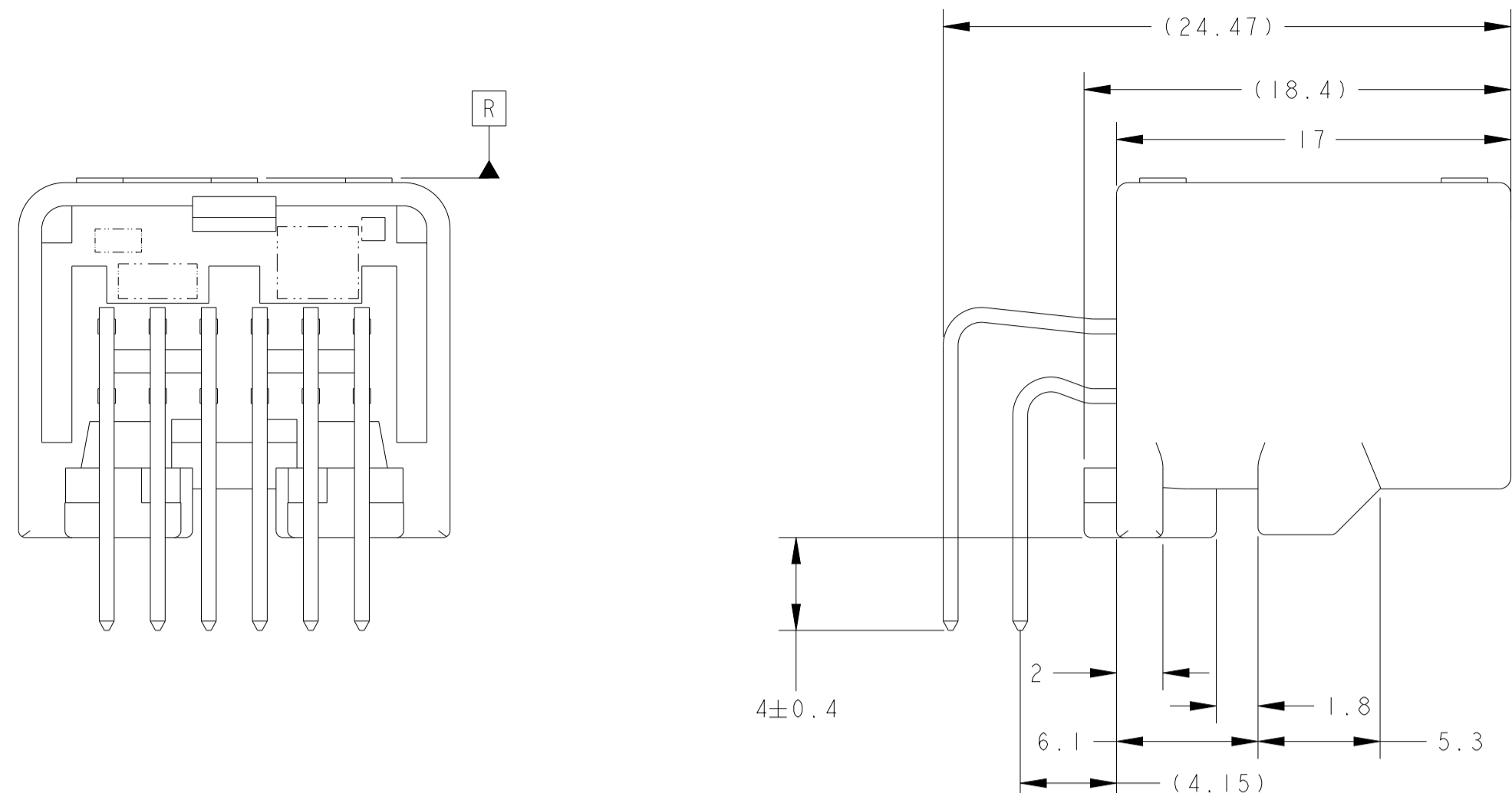
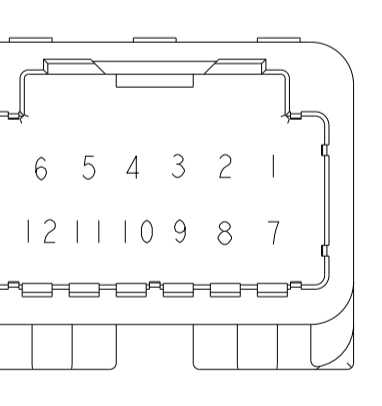


TABLE - 1

POS 種類	PLUG HOUSING PART NO	プラグハウジング 型番
12	1318774	
	1376675	
	1717106	
	1746872	



POS	種類	規格	径	材質	構造	回路番号	表面処理	鍍金	樹脂	色	部品番号
14	OBSOLETE	3.7	Ø2.4	CARTON BOX	PLASTIC TUBE	1~5, 7~11	SELECTIVE TIN (MATTE)	SELECTIVE TIN (BRIGHT)	PBT GF15	NATURAL	2-1318772-9
62	OBSOLETE	3.7	Ø2.4	CARTON BOX	PLASTIC TUBE	6, 12	SELECTIVE TIN (MATTE)	SELECTIVE GOLD	PBT GF15	NATURAL	6318772-6
12	OBSOLETE	3.2	Ø2.63	CARTON BOX	PLASTIC TUBE	1~12	SELECTIVE TIN (MATTE)	SELECTIVE GOLD	SPS GF17	BLACK	2-1318772-4
11	OBSOLETE	3.7	Ø2.4	PLASTIC BOX	PLASTIC TUBE	1~9, 11, 12	SELECTIVE TIN (MATTE)	SELECTIVE GOLD	PBT GF15	BLACK	2-1318772-3
10	OBSOLETE	3.7	Ø2.4	CARTON BOX	PLASTIC TUBE	1~12	SELECTIVE TIN (MATTE)	SELECTIVE TIN (BRIGHT)	PBT GF15	NATURAL	2-1318772-2
62	OBSOLETE	3.7	Ø2.4	CARTON BOX	PLASTIC TUBE	1~12	SELECTIVE TIN (MATTE)	SELECTIVE GOLD	PBT GF15	BLACK	6318772-5
62	OBSOLETE	3.7	Ø2.4	PLASTIC BOX	PLASTIC TUBE	1~12	SELECTIVE TIN (MATTE)	SELECTIVE GOLD	PBT GF15	BLACK	6318772-4
62	OBSOLETE	3.7	Ø2.4	PLASTIC BOX	PLASTIC TUBE	1~12	SELECTIVE TIN (MATTE)	SELECTIVE GOLD	PBT GF15	NATURAL	6318772-3
10	OBSOLETE	3.7	Ø2.4	CARTON BOX	PLASTIC TUBE	1~12	SELECTIVE TIN (MATTE)	SELECTIVE TIN (BRIGHT)	PBT GF15	BLACK	2-1318772-1
10	OBSOLETE	3.7	Ø2.4	PLASTIC BOX	PLASTIC TUBE	1~12	SELECTIVE TIN (MATTE)	SELECTIVE TIN (BRIGHT)	PBT GF15	BLACK	2-1318772-0
8	OBSOLETE	3.2	Ø2.63	CARTON BOX	PLASTIC TUBE	1~12	SELECTIVE TIN (MATTE)	SELECTIVE GOLD	SPS GF17	NATURAL	1-1318772-9
6	OBSOLETE	3.2	Ø2.63	CARTON BOX	PLASTIC TUBE	1~12	SELECTIVE TIN (MATTE)	SELECTIVE TIN (BRIGHT)	SPS GF17	BLACK	1-1318772-8
6	OBSOLETE	3.2	Ø2.63	PLASTIC BOX	PLASTIC TUBE	1~12	SELECTIVE TIN (MATTE)	SELECTIVE TIN (BRIGHT)	SPS GF17	BLACK	1-1318772-7
6	OBSOLETE	3.2	Ø2.63	PLASTIC BOX	PLASTIC TUBE	1~12	SELECTIVE TIN (MATTE)	SELECTIVE TIN (BRIGHT)	SPS GF17	NATURAL	1-1318772-6
9	OBSOLETE	3.2	Ø2.63	PLASTIC BOX	PLASTIC TUBE	1~9, 11, 12	SELECTIVE TIN (MATTE)	SELECTIVE GOLD	SPS GF17	BLACK	1-1318772-5
8	OBSOLETE	3.2	Ø2.63	PLASTIC BOX	PLASTIC TUBE	1~12	SELECTIVE TIN (MATTE)	SELECTIVE GOLD	SPS GF17	NATURAL	1-1318772-4
6	OBSOLETE	3.2	Ø2.63	CARTON BOX	PLASTIC TUBE	1~12	SELECTIVE TIN (MATTE)	SELECTIVE TIN (BRIGHT)	SPS GF17	NATURAL	1-1318772-3
5	OBSOLETE	3.7	Ø2.4	PLASTIC BOX	PLASTIC TUBE	1~9, 11, 12	SELECTIVE TIN	SELECTIVE GOLD	PBT GF15	BLACK	1-1318772-2
4	OBSOLETE	3.7	Ø2.4	CARTON BOX	PLASTIC TUBE	1~12	SELECTIVE TIN	SELECTIVE GOLD	PBT GF15	BLACK	1-1318772-0
4	OBSOLETE	3.7	Ø2.4	CARTON BOX	PLASTIC TUBE	1~12	SELECTIVE TIN	SELECTIVE GOLD	PBT GF15	NATURAL	1318772-9
1	SUPERSEDED	3.7	Ø2.4	PLASTIC BOX	PLASTIC TUBE	1~12	SELECTIVE TIN	PRE-TIN	PBT GF15	BLACK	1318772-7
2	OBSOLETE	3.7	Ø2.4	CARTON BOX	PLASTIC TUBE	1~12	TIN LEAD	SELECTIVE GOLD	PBT GF15	NATURAL	1318772-6
2	OBSOLETE	3.7	Ø2.4	PLASTIC BOX	PLASTIC TUBE	1~12	TIN-LEAD	SELECTIVE GOLD	PBT GF15	NATURAL	1318772-3
1	OBSOLETE	3.7	Ø2.4	CARTON BOX	PLASTIC TUBE	1~12	PRE-TIN		PBT GF15	NATURAL	1318772-2
1	OBSOLETE	3.7	Ø2.4	PLASTIC BOX	PLASTIC TUBE	1~12	PRE-TIN		PBT GF15	NATURAL	1318772-1
MARKING	WEIGHT (g)	v		OUTER 外装	INNER 内装	1~12	SOLDERING SIDE 半田付け側	CONTACT SIDE 接触部側	MATERIAL 材料	COLOR 色	PART NUMBER 部品番号
				PACKING STYLE 梱包形態		CIRCUIT NO. 回路番号	CONTACT FINISH 接触部仕上		HOUSING ハウジング		

1. 嵌合相手ハウジングは TABLE - 1 参照
プラグハウジングアセンブリと支障なく嵌合すること
推奨取付ねじ
2. JIS B1115, B1122タッピングねじ
なべノック 呼び径3 長さはTABLE-2 参照
3. ねじ締め付トルク (参考値) : 0.392N・m REF
4. MEASURED AT 6 mm FROM [Z]
5. INSTRUCTION SHEET NO : 411-5928
6. IDENTIFICATION MARK FOR THE CONTACT FINISH ; SEE TABLE
7. MEASURED AT 2 mm FROM [Z]
8. PRELIMINARY - NOT RELEASED FOR PRODUCTION.
9. SEE FIG.1 FOR AVAILABLE CIRCUIT
10. ID MARK, PART NUMBER INDICATED

TABLE-2

プリント基板板厚 (mm)	THICKNESS OF PCB (mm)	1.2	1.6
固定用ねじ着下長さ (mm) <td>NOMINAL LENGTH OF SCREW (mm)</td> <td>5</td> <td>6</td>	NOMINAL LENGTH OF SCREW (mm)	5	6



THIS DRAWING IS A CONTROLLED DOCUMENT.

DIMENSIONS: 単位: mm

TOLERANCES UNLESS OTHERWISE SPECIFIED: 公差: ±0.3

MATERIAL: CONTACT: BRASS, HOUSING: SEE TABLE

FINISH: SEE TABLE

WEIGHT: SEE TABLE

CUSTOMER DRAWING

TE Connectivity

025 SERIES 12 POSITION (PCB H-TYPE) CAP HOUSING ASSEMBLY

SIZE: 114-5250

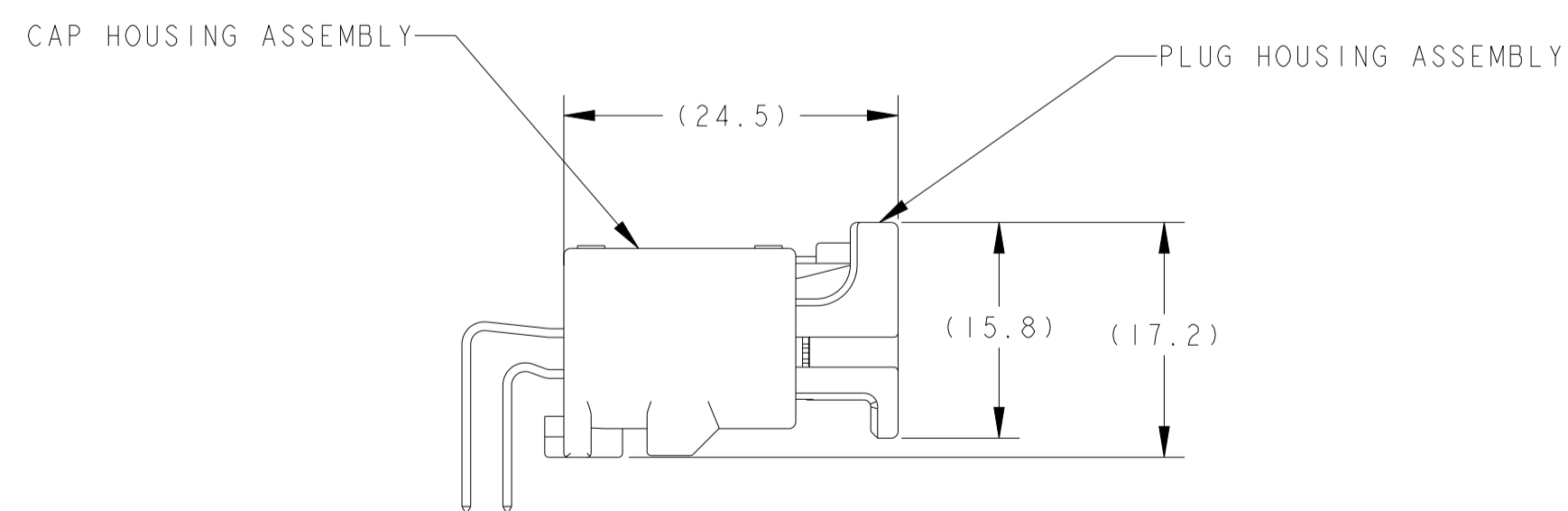
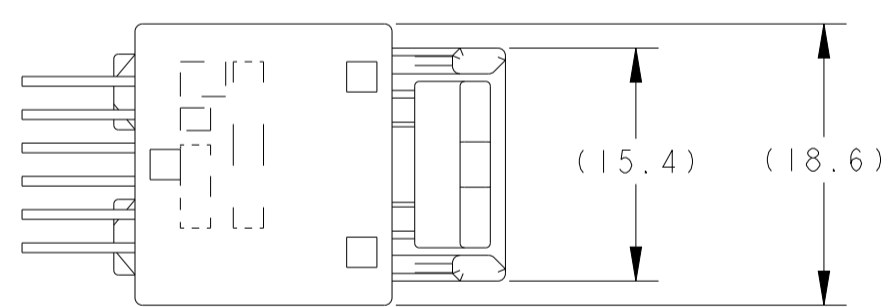
114-5250

000779

1318772

1:1 SHEET 1 OF 2 REV H5

REVISIONS				
P	LTN	DESCRIPTION	DATE	APVD
-		SEE SHEET 1	-	-



CAP ASSEMBLY & PLUG ASSEMBLY ENGAGEMENT DRAWING
 キャップアッセンブリ & プラグアッセンブリ 嵌合図

THIS DRAWING IS A CONTROLLED DOCUMENT.		DWN Y. NOGUCHI 07FEB00	
		CHK S. SHINDOU 07FEB00	
DIMENSIONS: 単位: mm	TOLERANCES UNLESS OTHERWISE SPECIFIED:	APVD N. SAI 07FEB00	NAME SAI
	0 PLC ±0.5 2 PLC ±0.13 3 PLC ±0.013 4 PLC ±0.0001	PRODUCT SPEC 108-5668	025 SERIES 12 POSITION (PCB H-TYPE) CAP HOUSING ASSEMBLY
	ANGLES ±3°00'	APPLICATION SPEC 114-5250	
MATERIAL 材質	FINISH 仕上	WEIGHT SEE TABLE	SIZE CAGE CODE DRAWING NO A 00779 C=1318772
	SEE TABLE	CUSTOMER DRAWING	RESTRICTED TO SCALE 2:1 SHEET 2 OF 2 REV H5