

NUMBER C-177902

METRIC

ロックタイプII  
LOCK TYPE II

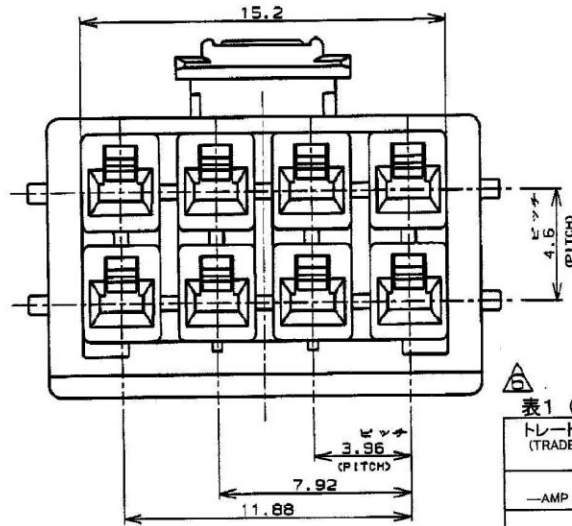
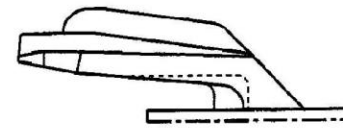
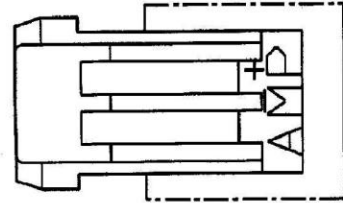
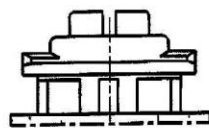
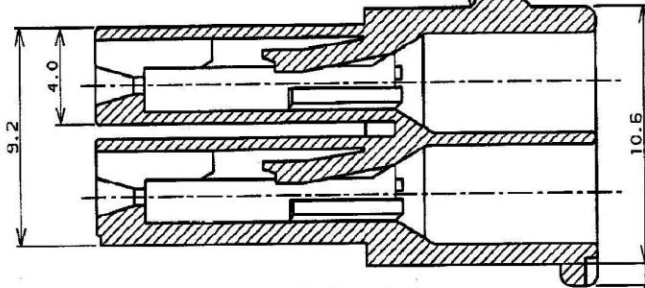


表1 (TABLE 1)

トレードマーク (TRADE MARK)	生産場所 (MANUFACTURING PLACE)
— AMP OR AMP	日本 (JAPAN)
—+ AMP OR AMP	中国 (CHINA(PRC))
* AMP OR AMP	韓国 (KOREA)

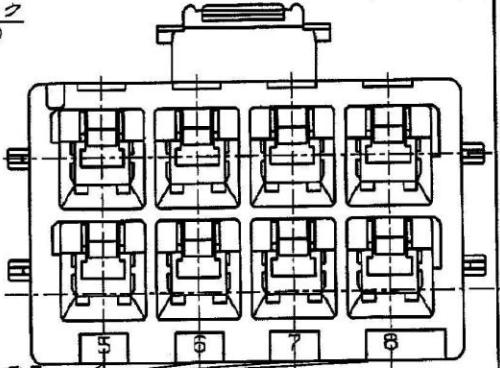
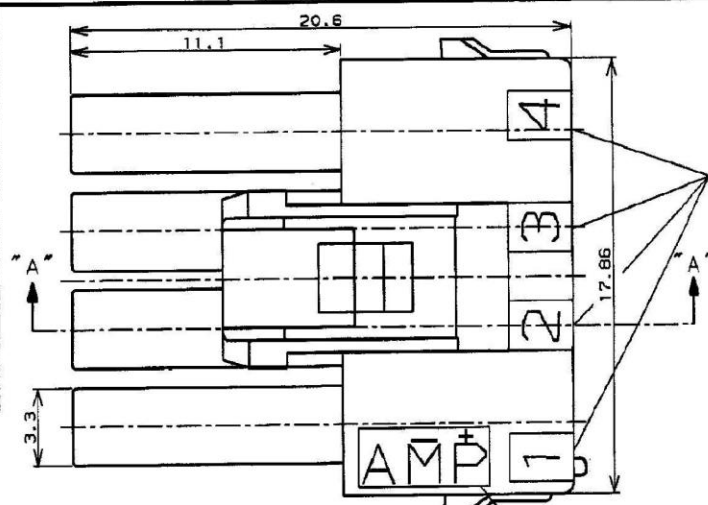
断面 "A-A"  
(SECT)



本図ロックタイプIを示す  
AS SHOWN LOCK TYPE I

- NOTES;
- PRODUCT SPEC. 108-5410
  - APPLICABLE CONTACT P/N  
REC CONTACT: 177915-□(※20-16AWG)  
177914-□(※26-22AWG)

- 回路番号  
(CIRCUIT No.)
- MATING CONN. P/N  
CAP HSG: 179467-□ (FREE HANGING)  
TAB CONTACT: 177917-□(※20-16AWG)  
177916-□(※26-22AWG)
  - APPLICABLE PLATE P/N: 177920-□
  - INSTRUCTION SHEET: 411-5638
  - SEE TABLE 1
  - ALL PARTS MEET RTI ELECTRICAL RATING OF 105C ACCORDING TO UL 1777
  - PART 5-177902-1 COMPLY WITH GLOW WIRE REQUIREMENT FOR PARTS OF NON-METALLIC MATERIAL SUPPORTING A CURRENT-CARRYING CONNECTION DETAILED IN IEC 60335-1, SECTION 30(GWT)
  - PART 177902-7 COMPLY WITH HOT WIRE REQUIREMENT, PA66, UL 94V-0. HOT WIRE IGNITION(HWI) VERSION ARE MOLDED IN A RESIN THAT COMPLIES WITH THE HOT WIRE IGNITION TEST 109-32026 AND ARE RECOMMENDED FOR USE WITH HWI HOUSING THAT ALSO COMPLY.
  - Preliminary-not for production
  - APPLICATION SPEC: 114-5175



- 注: 1. 通用製品規格: 108-5410
- 通用リソグット型番  
リセ・コンタクト: 177915-□(※20-16AWG)  
177914-□(※26-22AWG)
  - 嵌合相手側製品型番  
キャップ・ハウジング: 179467-□(吊りタイプ)  
タブ・コンタクト: 177917-□(※20-16AWG)  
177916-□(※26-22AWG)
  - 運用プレート型番: 177920-□
  - 取扱説明書: 411-5638
- 表1参照

LOCK TYPE I	■ 自然色 (NATURAL)	■ 青 (BLUE)	■ 黄 (YELLOW)	■ 自然色 (NATURAL)
ロックタイプII LOCK TYPE II	■ 自然色 (NATURAL)	■ 青 (BLUE)	■ 黄 (YELLOW)	■ 自然色 (NATURAL)
ロックタイプI LOCK TYPE I	■ 自然色 (NATURAL)	■ 青 (BLUE)	■ 黄 (YELLOW)	■ 自然色 (NATURAL)

REVISED ECR	REVISED PER ECR	REVISED ECR	REVISED ECR	REVISED ECR	REVISED ECR	REVISED ECR	REVISED ECR	REVISED ECR	REVISED ECR
C6	C5	C4	C3	C2	C1	C	B	LTR	
REVISED ECR-23-169773	REVISED PER ECR-19-017851	REVISED ECR-14-017020	REVISED ECR-14-013449	REVISED ECR-13-019881	REVISED ECR-12-019829	変更	変更	変更 (REVISION RECORD)	
M.G D.Z	SM D.Z	WW D.Z	WW D.Z	A.Z D.Z	A.Z F.M			DR	CHK
STA0202	20NOV19	14NOV2014	14SEP2014	23DEC2013	NOV162012			DATE	

AMP POWER DOUBLE LOCK CONN.

8極 3.96mmピッチ プラグハウジング (2列タイプ)

AMP POWER DOUBLE LOCK CONN. 3.96mm PITCH PLUG HOUSING 8 Pos (DBL ROW)

材料 (MATERIAL): 絶縁樹脂 (UL94V-0) 銅 (C1100) 銅 (C1100) 銅 (C1100) 銅 (C1100) 銅 (C1100) 銅 (C1100) 銅 (C1100) 銅 (C1100)

絶縁色調 (INSULATION DIA.): 緑 (GREEN) 赤 (RED) 白 (WHITE) 黒 (BLACK) 黒 (BLACK) 黒 (BLACK) 黒 (BLACK) 黒 (BLACK)

仕上げ (FINISH): 光沢 (SHINY) 光沢 (SHINY) 光沢 (SHINY) 光沢 (SHINY) 光沢 (SHINY) 光沢 (SHINY) 光沢 (SHINY) 光沢 (SHINY)

名称 (NAME): AMP POWER DOUBLE LOCK CONN.

製造元 (MANUFACTURER): N. NAGASHIMA

検査 (CHECK): M. SHINDO

承認 (APPROVAL): Y. KASHIWA

サイズ (SIZE): B J

寸法 (SCALE): 10mm: 1:0.2, 100mm: 1:0.25, 300mm: 1:0.3

図号 (No.): C-177902

図面 (DRAWING): C6

枚数 (SHEET): 1 OF 1