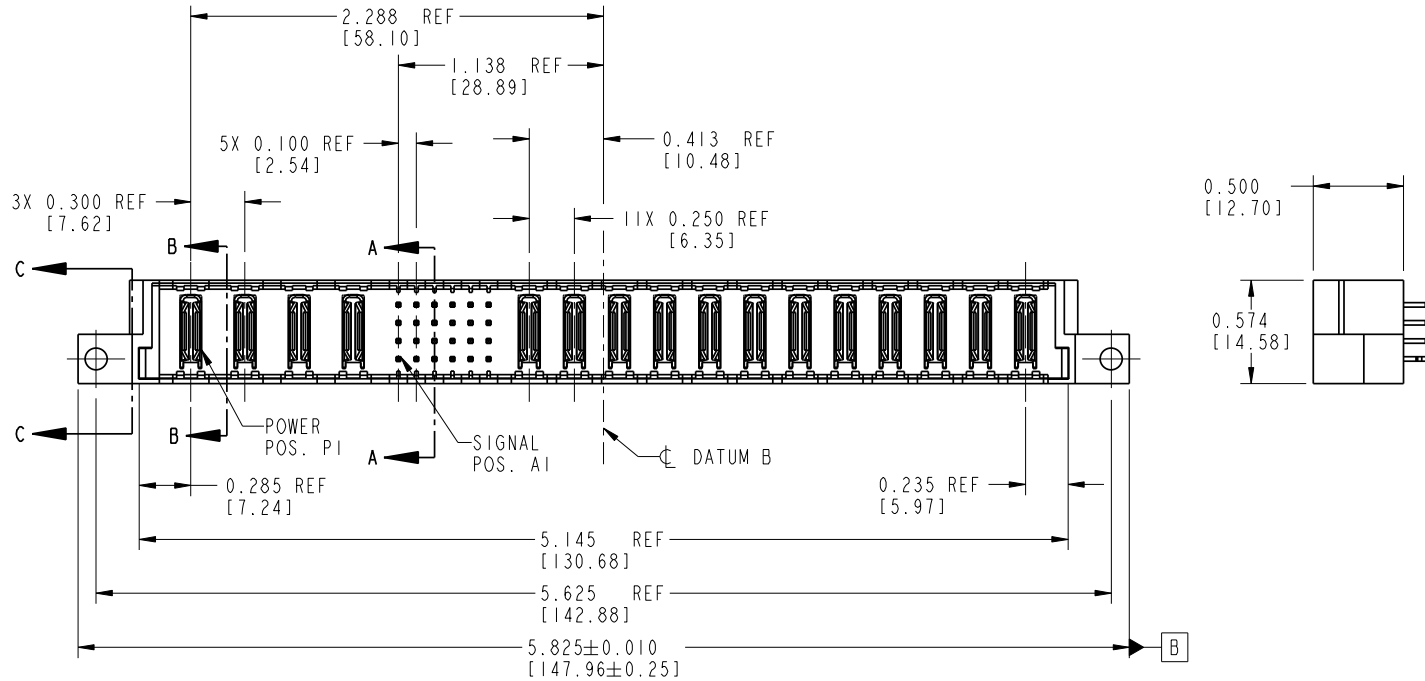


Tous droits strictement réservés. Reproduction ou communication à des tiers interdite sous quelque forme que ce soit sans autorisation écrite du propriétaire. Propriété de c FCI. Droits de reproduction FCI.

All rights strictly reserved. Reproduction or issue to third parties in any form without written authority from the proprietor. Property of FCI. Copyright FCI.

| | | | | | | | | | | | | | | | | | | | | | | |
|--------------------------------------|--------------|----|-------|----|----|----|--------|---|---|---|---|---|-------|----|----|----|----|-----|----|----------|-----|-----|
| PRODUCT NO. 51963-005-- NOTE 3 | ROWS DUBA | E1 | POWER | | | | SIGNAL | | | | | | POWER | | | | | | E2 | PRINTING | | |
| | | | P1 | P2 | P3 | P4 | 1 | 2 | 3 | 4 | 5 | 6 | P5 | P6 | P7 | P8 | P9 | P10 | | P11 | P12 | P13 |



PRELIMINARY

| CODE | DIM "M" MATING LENGTH | CONTACT TYPE |
|------|-----------------------|--------------|
| E | 0.270 [6.86] | SIGNAL |
| PA | N/A [N/A] | POWER |
| HA | N/A [N/A] | HOLD-DOWN |

| | | | | | | | | | |
|-------------|-----------|----------|----------|---------------------|-----------------------|---------------------------------------|---|-------------------------|--|
| mat'l code | | | | SEE NOTE 2 | | tolerances unless otherwise specified | | CUSTOMER | |
| lir | ecn no. | dr | date | linear | projection | COPY | | | |
| A | V03-1075 | TAB | 09/26/03 | .XX±.01/0.X±0.3 | | FCI www.fciconnect.com | | | |
| B | DG05-0506 | Ryan | 11/28/05 | .XXX±.005/0.XX±0.13 | | title 4ACP + 24S + 12P | | | |
| | | | | angles | | VERTICAL SOLDER HEADER | | | |
| | | | | dr | T. BRUNGARD 08/22/03 | INCH/MM | | product family PwrBlade | |
| | | | | engr | M. MOSTOLLER 08/22/03 | scale 1:1 | | code 213 | |
| | | | | chr | M. MOSTOLLER 08/22/03 | | | size dwg no | |
| | | | | appd | M. MOSTOLLER 08/22/03 | | | A 51963-005 | |
| sheet index | | revision | | B | B | B | B | sheet 1 of 4 | |
| | | sheet | | 1 | 2 | 3 | 4 | | |

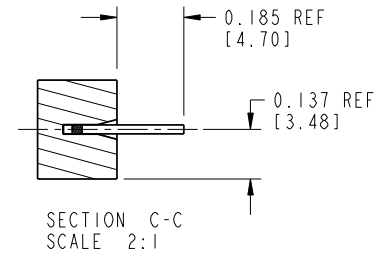
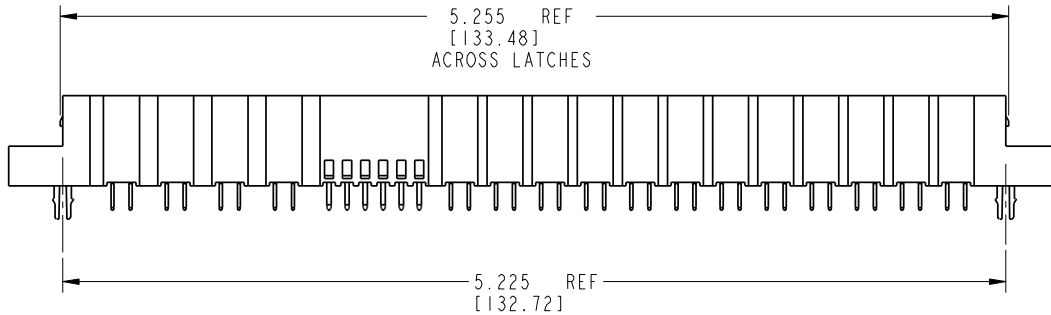
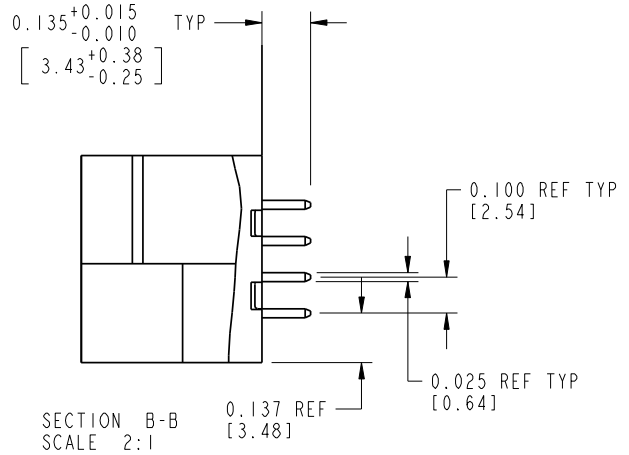
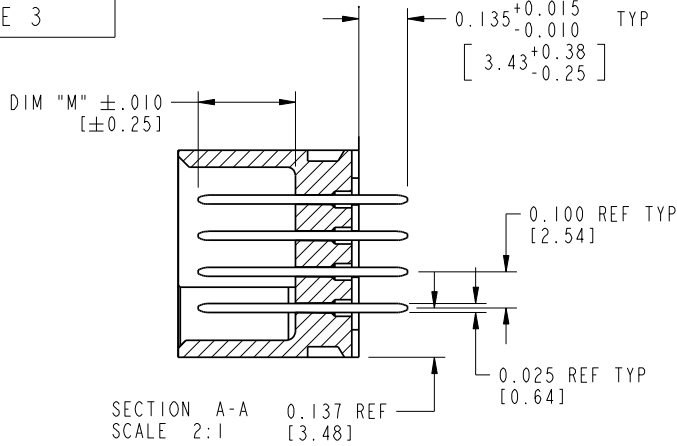
cage code 22526

Pro/E

Tous droits strictement reserves. Reproduction ou communication a des tiers interdite sous quelque forme que ce soit sans autorisation écrite du propriétaire. Propriete de c FCI. Droits de reproduction FCI.

All rights strictly reserved. Reproduction or issue to third parties in any form without is not permitted without written authority from the proprietor. Property of FCI. Copyright FCI.

PRODUCT NUMBER
51963-005--
NOTE 3



PRELIMINARY

| | | | | | | | | | |
|-----------------------|----------------|----|------|---------------------------------------|-----------------------|----------|--|------------------------|------------------------|
| mat'l code SEE NOTE 2 | | | | tolerances unless otherwise specified | | CUSTOMER | | www.fciconnect.com | |
| lfr | ecn no. | dr | date | linear | .XX±.01/0.X±0.3 | COPY | | projection | title |
| B | | | | | .XXX±.005/0.XX±0.13 | | | | 4ACP + 24S + 12P |
| | | | | angles | .XXX±.002/0.XXX±0.051 | | | | VERTICAL SOLDER HEADER |
| | | | | dr | 0°±2° | | | | product family |
| | | | | engr | T. BRUNGARD 08/22/03 | INCH/MM | | | PwrBlade |
| | | | | chr | M. MOSTOLLER 08/22/03 | scale | | size | code |
| | | | | appd | M. MOSTOLLER 08/22/03 | 1:1 | | A | 213 |
| sheet index | revision sheet | | | | | | | dwg no | sheet |
| | | | | | | | | 51963-005 | 2 of 4 |

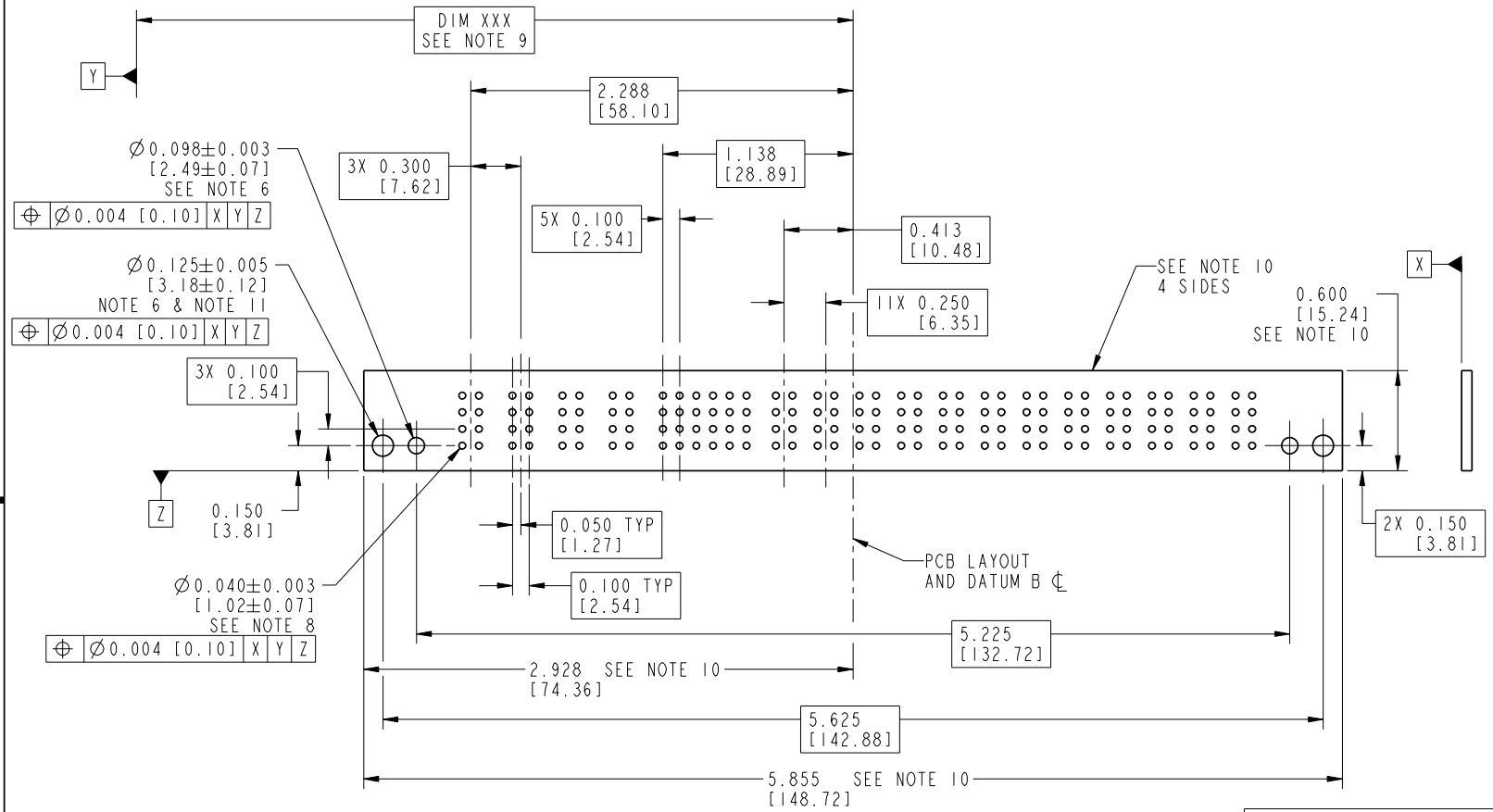
cage code 22526

Pro/E

Tous droits strictement réservés. Reproduction ou communication à des tiers interdite sans quelque forme que ce soit sans autorisation écrite du propriétaire. Propriété de c FCI. Droits de reproduction FCI.

All rights strictly reserved. Reproduction or issue to third parties in any form whatsoever is not permitted without written authority from the proprietor. Property of FCI. Copyright FCI.

PRODUCT NUMBER
51963-005...
NOTE 3



PRELIMINARY

| | | | | | | | | | | | |
|-----------------------|----------------|----|------|---------------------------------------|-------------------------|-----------|--|------------------------|--|-------------------------|--------------|
| mat'l code SEE NOTE 2 | | | | tolerances unless otherwise specified | | CUSTOMER | | www.fciconnect.com | | | |
| lir | ecn no. | dr | date | linear | .XX±.01/0.X±0.3 | COPY | | projection | title 4ACP + 24S + 12P VERTICAL SOLDER HEADER | | |
| B | | | | | .XXX±.005/0.XX±0.13 | INCH/MM | | | | product family PwrBlade | code 213 |
| | | | | | .XXX±.002/0.XXX±0.051 | scale 1:1 | | | | size A | sheet 3 of 4 |
| | | | | | angles 0°±2° | | | | | dwg no 51963-005 | |
| | | | | | dr T. BRUNGARD 08/22/03 | | | | | | |
| | | | | enr M. MOSTOLLER 08/22/03 | | | | | | | |
| | | | | chr M. MOSTOLLER 08/22/03 | | | | | | | |
| | | | | appd M. MOSTOLLER 08/22/03 | | | | | | | |
| sheet index | revision sheet | | | | | | | | | | |

cage code 22526

Pro/E

PRODUCT NUMBER
 51963-005__
 NOTE 3

NOTES:

1. DIMENSIONS AND TOLERANCES ARE IN ACCORDANCE WITH ASME Y14.5M, 1994 UNLESS OTHERWISE SPECIFIED.

CONNECTOR NOTES:

2 HOUSING MATERIAL: UL 94 V-0 GLASS FILLED HIGH-TEMP THERMOPLASTIC

POWER CONTACT MATERIAL: COPPER ALLOY
SIGNAL PIN MATERIAL: COPPER ALLOY

3. PLATING:

51963-005: SIGNAL PIN: 30u"/0.76um Au OVER 50u"/1.27um Ni ON THE CONTACT AREA
AND 100u"/2.54um SnPb OVER 50u"/1.27um Ni ON THE TERMINATION AREA
POWER PIN: 30u"/0.76um Au OVER 50u"/1.27um Ni ON THE CONTACT AREA
AND 100u"/2.54um SnPb OVER 50u"/1.27um Ni ON THE TERMINATION AREA

51963-005LF: SIGNAL PIN: 30u"/0.76um Au OVER 50u"/1.27um Ni ON THE CONTACT AREA
AND 78u"/2.00um Sn OVER 50u"/1.27um Ni ON THE TERMINATION AREA
POWER PIN: 30u"/0.76um Au OVER 50u"/1.27um Ni ON THE CONTACT AREA
AND 78u"/2.00um Sn OVER 50u"/1.27um Ni ON THE TERMINATION AREA

PART NUMBER 51963-005LF MEETS EUROPEAN UNION DIRECTIVE AND OTHER COUNTRY REGULATIONS AS DESCRIBED IN GS-22-008.

THE HOUSING WILL WITHSTAND EXPOSURE TO 260° PEAK TEMPERATURE FOR 10 SECONDS IN A WAVE SOLDER APPLICATION WITH A CIRCUIT BOARD.

4. PRODUCT SPECIFICATION GS-12-149.
APPLICATION SPECIFICATION BUS-20-067.

5. PACKAGED IN TRAYS.

PCB NOTES:

6. ALL HOLE DIAMETERS ARE FINISHED HOLE SIZE.

7. MOUNTING HOLES, WHERE APPLICABLE, ARE UNPLATED.

8 Ø.0453±.0010 [1.151±0.025] DRILLED HOLES PLATED WITH
.0003 [0.008] MIN SnPb OVER .001 [0.03]
TO .003 [0.08] Cu PLATING TO ACHIEVE
Ø.040±.003 [1.02±.07] HOLE.

9 "DIM XXX" TO BE DETERMINED BY THE CUSTOMER.

10 CONNECTOR KEEP-OUT ZONE.

11 CUSTOMER SUPPLIES (2) #4-40 UNC SCREWS,
HARDWARE TO MOUNT HEADER TO PC BOARD.

PRELIMINARY

| | | | | | | | | | | | |
|-------------|---------|----------------|------|------------|--|---------------------------------------|--|--|--|--------------------------------|--|
| mat'l code | | | | SEE NOTE 2 | | tolerances unless otherwise specified | | CUSTOMER | | A FCI www.fciconnect.com | |
| lfr | ecr no. | dr | date | linear | .XX±.01/0.X±0.3 | projection | | title 4ACP + 24S + 12P VERTICAL SOLDER HEADER | | | |
| B | | | | angles | .XXX±.005/0.XX±0.13 .XXX±.002/0.XXX±0.051 | INCH/MM | | product family PwrBlade | | code 213 | |
| | | | | dr | 0° ± 2° | scale 1:1 | | size A | | dwg no 51963-005 | |
| | | | | enrg | T. BRUNGARD 08/22/03 | | | | | sheet 4 of 4 | |
| | | | | chr | M. MOSTOLLER 08/22/03 | | | | | | |
| | | | | appd | M. MOSTOLLER 08/22/03 | | | | | | |
| sheet index | | revision sheet | | | | | | | | | |

cage code 22526

Tous droits strictement reserves. Reproduction ou communication a des tiers interdite sous quelque forme que ce soit sans autorisation écrite du propriétaire. Propriete de c FCI. Droits de reproduction FCI.



All rights strictly reserved. Reproduction or issue to third parties in any form without is not permitted without written authority from the proprietor. Property of FCI. Copyright FCI.