

316062-1 ✓ ACTIVE

## Power Double Lock

TE Internal #: 316062-1

Rectangular Connector Locking, Double Lock Plate, 3 Position, UL 94V-0, -22 – 221 °F [-30 – 105 °C], Power Double Lock

[View on TE.com >](#)



Connectors > Rectangular Connectors > Rectangular Connector Accessories > Rectangular Connector Locking > Power Double Lock TPA



Connector & Contact Retention Accessory Type: **Double Lock Plate**

Number of Positions: **3**

UL Flammability Rating: **UL 94V-0**

Operating Temperature Range: **-30 – 105 °C [-22 – 221 °F]**

[All Power Double Lock TPA \(6\)](#)

## Features

### Product Type Features

Connector & Contact Retention Accessory Type	Double Lock Plate
--	-------------------

### Configuration Features

Number of Positions	3
---------------------	---

### Body Features

Primary Product Material	Glass-Filled Nylon 66
--------------------------	-----------------------

### Usage Conditions

Operating Temperature Range	-30 – 105 °C[-22 – 221 °F]
-----------------------------	----------------------------

### Industry Standards

Glow Wire Rating	Standard Part - Not Glow Wire
------------------	-------------------------------

UL Flammability Rating	UL 94V-0
------------------------	----------

### Packaging Features

Packaging Quantity	300
--------------------	-----

Packaging Method	Bag/Box
------------------	---------

## Other

Connector Accessory Comment

Quantity required based on connector being used.

## Product Compliance

For compliance documentation, visit [the product page on TE.com](#)>

EU RoHS Directive 2011/65/EU

Compliant

EU ELV Directive 2000/53/EC

Compliant

China RoHS 2 Directive MIIT Order No 32, 2016

No Restricted Materials Above Threshold

EU REACH Regulation (EC) No. 1907/2006

Current ECHA Candidate List: JUNE 2023 (235)  
Candidate List Declared Against: JAN 2023 (233)  
Does not contain REACH SVHC

Halogen Content

Not Low Halogen - contains Br or Cl &gt; 900 ppm.

Solder Process Capability

Not applicable for solder process capability

### Product Compliance Disclaimer

This information is provided based on reasonable inquiry of our suppliers and represents our current actual knowledge based on the information they provided. This information is subject to change. The part numbers that TE has identified as EU RoHS compliant have a maximum concentration of 0.1% by weight in homogenous materials for lead, hexavalent chromium, mercury, PBB, PBDE, DBP, BBP, DEHP, DIBP, and 0.01% for cadmium, or qualify for an exemption to these limits as defined in the Annexes of Directive 2011/65/EU (RoHS2). Finished electrical and electronic equipment products will be CE marked as required by Directive 2011/65/EU. Components may not be CE marked. Additionally, the part numbers that TE has identified as EU ELV compliant have a maximum concentration of 0.1% by weight in homogenous materials for lead, hexavalent chromium, and mercury, and 0.01% for cadmium, or qualify for an exemption to these limits as defined in the Annexes of Directive 2000/53/EC (ELV). Regarding the REACH Regulation, the information TE provides on SVHC in articles for this part number is based on the latest European Chemicals Agency (ECHA) 'Guidance on requirements for substances in articles' posted at this URL: <https://echa.europa.eu/guidance-documents/guidance-on-reach>

## Compatible Parts



TE Part # 2-179862-1  
AMP POWER D/LOCK PLUG HSG 6P



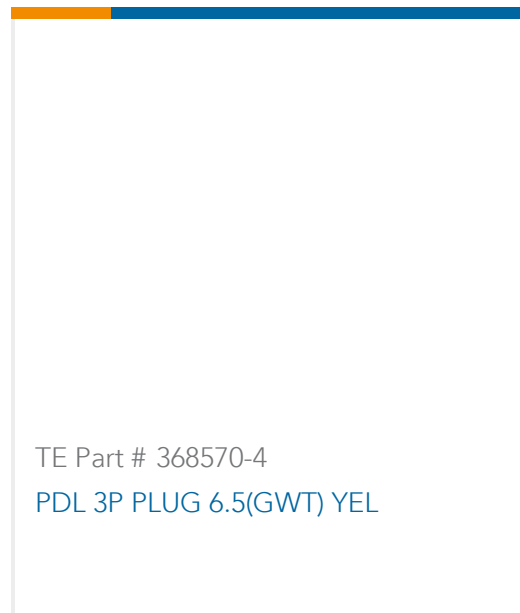
TE Part # 368570-9  
PDL 3P PLUG 6.5(GWT) BLK

TE Part # 2005252-4  
PDL 6P PLUG 6.5 D/R(GWT) YEL

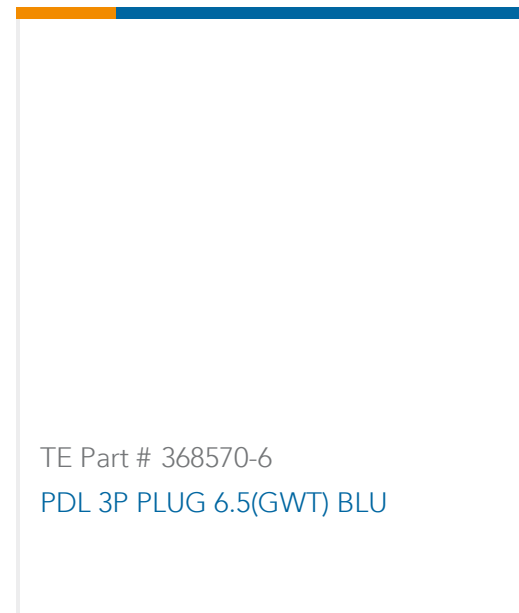
TE Part # 2005252-6  
PDL 6P PLUG 6.5 D/R(GWT) BLU



TE Part # 368570-2  
PDL 3P PLUG 6.5(GWT) RED



TE Part # 368570-4  
PDL 3P PLUG 6.5(GWT) YEL

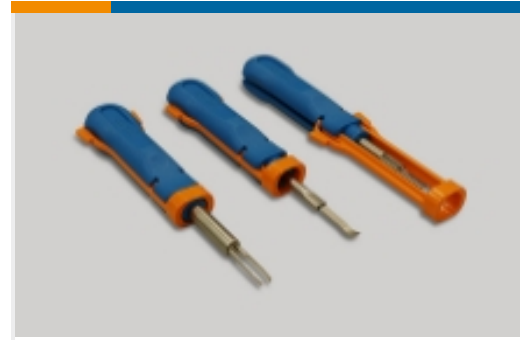


TE Part # 368570-6  
PDL 3P PLUG 6.5(GWT) BLU

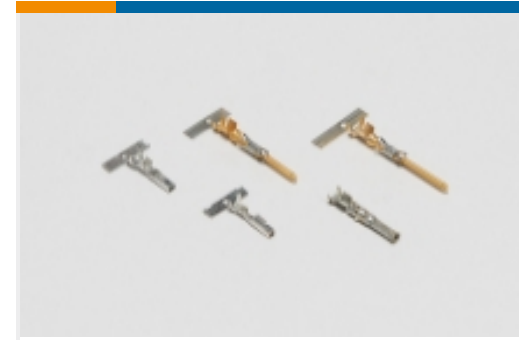
## Also in the Series | Power Double Lock



Connector Contacts(1)



Insertion & Extraction Tools(2)



Power Contacts(23)



Rectangular Connector Locking(14)

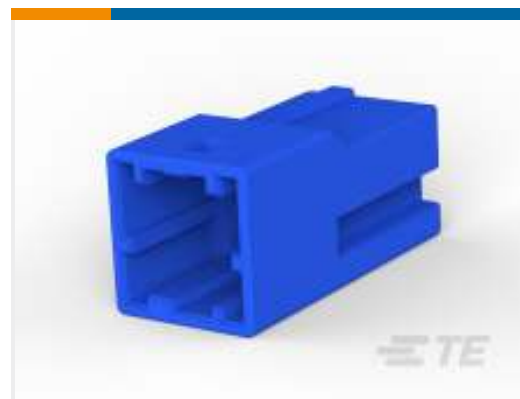


Rectangular Power Connectors(284)

## Customers Also Bought



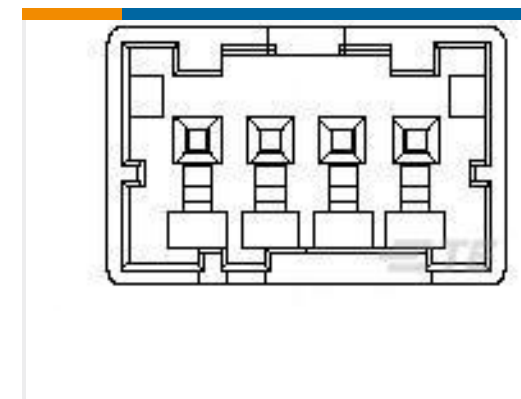
TE Part #179938-1  
AMP POWER DBL LOCK PLUG HSG 3P



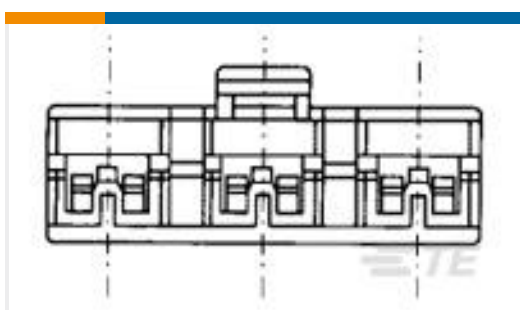
TE Part #2-1903391-3  
GIC 2.5 W CAP HSG 2P BLUE



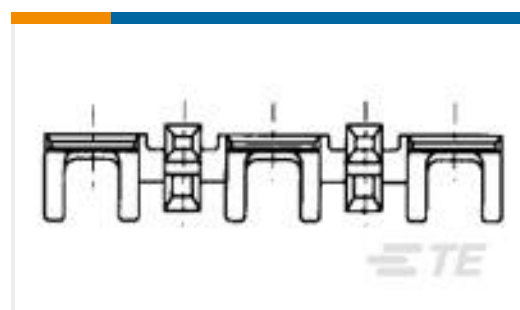
TE Part #1-2232890-3  
3P MONOPLUG 2.5 SELECTIVELY  
LOADED



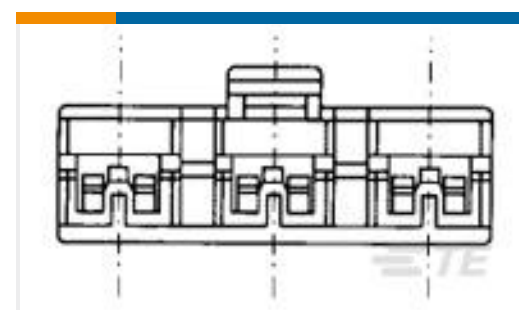
TE Part #2-1903393-3  
GIC 2.5 W CAP HSG 4P BLUE



TE Part #353255-7  
110 HSG. PL EX REC. 7.6mm 3P RED



TE Part #353256-1  
110 HSG. PL EX REC. 7.6mm 3P NAT



TE Part #353255-1  
110 HSG. PL EX REC. 7.6mm 3P NAT



## Documents

### CAD Files

Customer View Model

[ENG\\_CVM\\_CVM\\_316062-1\\_C.2d\\_dxf.zip](#)

English

### 3D PDF

3D

Customer View Model

[ENG\\_CVM\\_CVM\\_316062-1\\_C.3d\\_igs.zip](#)

English

Customer View Model

[ENG\\_CVM\\_CVM\\_316062-1\\_C.3d\\_stp.zip](#)

English

By downloading the CAD file I accept and agree to the [Terms and Conditions](#) of use.

### Datasheets & Catalog Pages

[SOFT\\_SHELL\\_PIN\\_AND\\_SOCKET\\_CONNECTORS\\_CATALOG](#)

English

[1773458-5\\_POWER\\_DBL\\_LOCK\\_\(PDL\)\\_CONNECTORS](#)

English

### Product Specifications

[Application Specification](#)

English

### Product Environmental Compliance

[Product Compliance Document](#)

English

[Product Compliance Document](#)

English

### Instruction Sheets

[Instruction Sheet \(non U.S.\)](#)

English

[AMP POWER DOUBLELOCK CONNECTOR SERIES](#)

English