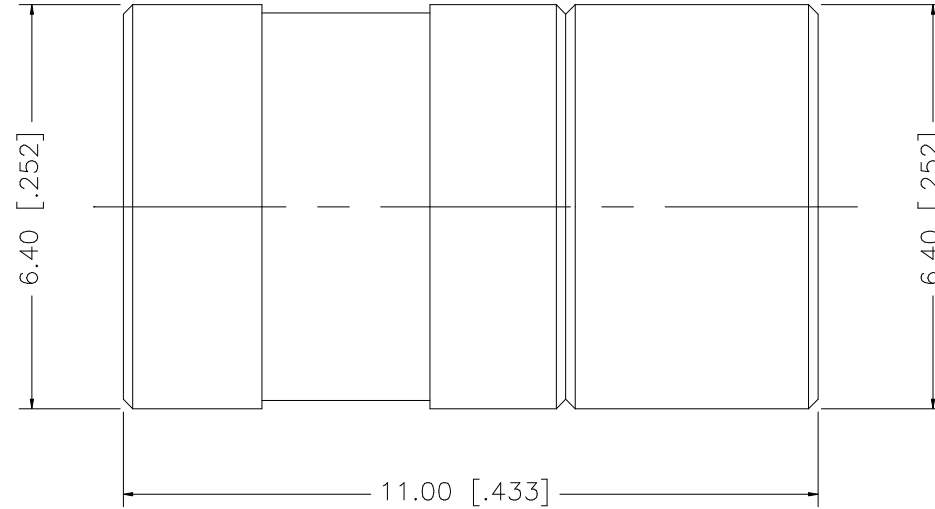


REV.	DATE	DESCRIPTION
NC	06/13/05	INITIAL RELEASE



8					<small>UNLESS OTHERWISE SPECIFIED DIMENSIONS ARE IN MILLIMETERS. DIMENSIONS IN [] ARE IN INCHES AND FOR CUSTOMER REFERENCE ONLY.</small> <small>UNLESS OTHERWISE SPECIFIED TOLERANCES FOR MILLIMETERS ARE:</small> 0.5 - 8mm ± 0.20mm 8 - 30mm ± 0.40mm 30 - 120mm ± 0.50mm <small>UNLESS OTHERWISE SPECIFIED TOLERANCES FOR INCHES ARE:</small> .020 - .315 = ± 0.007" .315 - 1.180 = ± 0.015" 1.180 - 4.724 = ± 0.020" DO NOT SCALE DRAWING	APPROVALS	DATE	<h1 style="color: blue;">Amphenol Connex</h1>	
7				DRAWN		G.R.S.	06/13/05		PART DESCRIPTION SMB TERMINATOR PLUG
6				CHECKED					
5	COVER	BRASS	GOLD	1		ISSUED			
4	RESISTOR	100R	2 WATT - 1%	1		SHEET	1 OF 1	PART NO. 142334	
3	CONTACT PIN	BER. COPPER	GOLD	1		CAD FILE		DWG. NO. 142334.DWG	
2	INSULATOR	TEFLON	NATURAL	1		C:/142/142334.DWG		REV. NC SIZE A SCALE NA	
1	BODY	BRASS	GOLD	1					
	DESCRIPTION	MATERIAL	FINISH	QTY					