

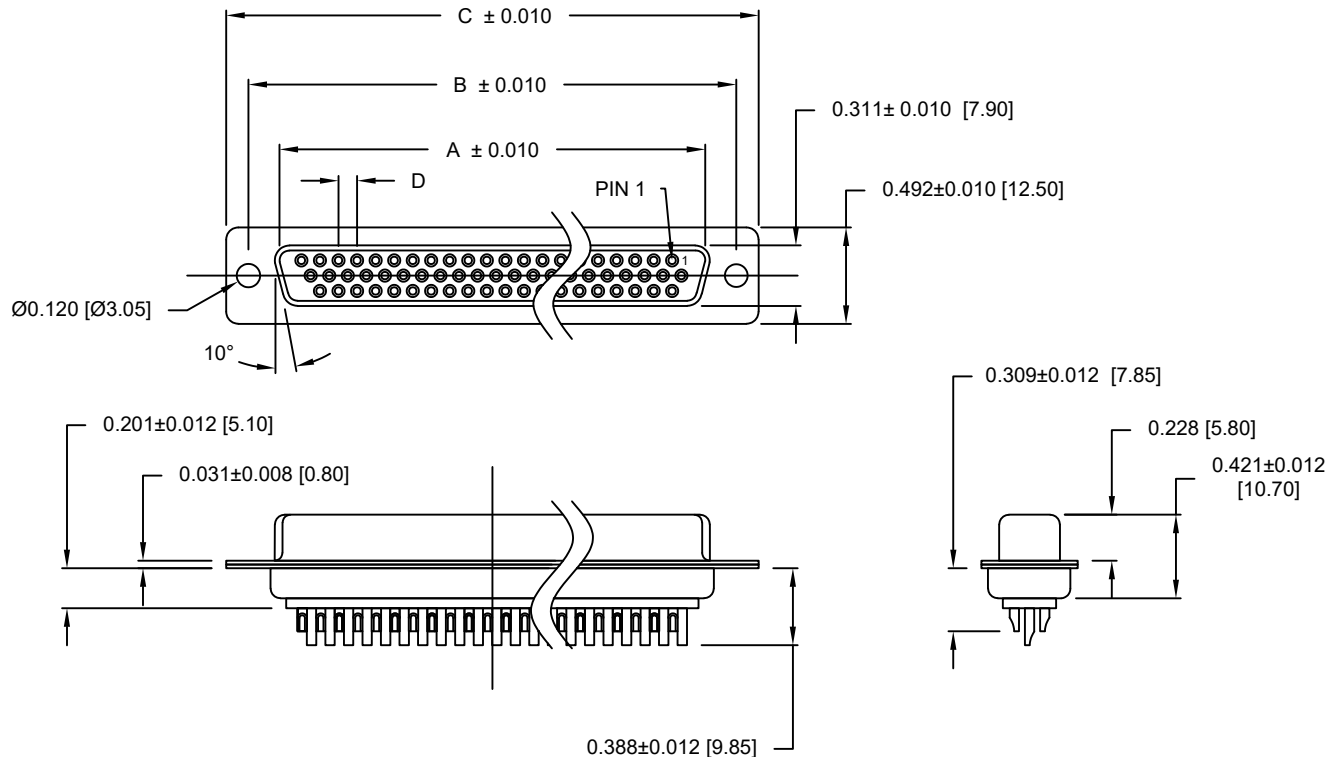
DESCRIPTION: HIGH DENSITY - MACHINED CONTACTS - SOLDER CUP

MATERIALS AND FINISH:

SHELL: STEEL MATERIAL, NICKEL FINISH  
 INSULATOR: PBT THERMOPLASTIC 30% GLASS FILLED  
 UL 94V-0 RATED, BLACK COLOR  
 (PROCESS TEMP 230°C)  
 CONTACT MATERIAL: COPPER ALLOY  
 CONTACT FINISH: GOLD PLATED

ELECTRICAL:

CONTACT CURRENT RATING: 3 AMPS  
 CONTACT RESISTANCE: 10 mOHMS Max.  
 DIELECTRIC WITHSTANDING VOLTAGE: 1,000VAC Min.  
 INSULATION RESISTANCE: 5 GOHMS Min.  
 TEMPERATURE RATING: -55° ~ +125° C



DIMENSIONS (in.)				
No. OF PINS	A	B	C	D
15	0.642	0.984	1.213	0.090
26	0.969	1.311	1.543	0.090
44	1.512	1.852	2.089	0.090
62	2.157	2.500	2.732	0.095

DIMENSIONS (mm)				
No. OF PINS	A	B	C	D
15	16.30	25.00	30.80	2.29
26	24.60	33.30	39.20	2.29
44	38.40	47.05	53.05	2.29
62	54.80	63.50	69.40	2.41

180-MYY-20YLYYY

SERIES \_\_\_\_\_  
 MACHINED CONTACTS \_\_\_\_\_  
 POSITION \_\_\_\_\_  
 15 \_\_\_\_\_  
 26 \_\_\_\_\_  
 44 \_\_\_\_\_  
 62 \_\_\_\_\_  
 GENDER \_\_\_\_\_  
 2 = FEMALE \_\_\_\_\_  
 TERMINATION \_\_\_\_\_  
 0 = SOLDER CUP \_\_\_\_\_  
 SHELL PLATING \_\_\_\_\_  
 3 = NICKEL \_\_\_\_\_  
 HARDWARE \_\_\_\_\_  
 00 = Ø 0.120" HOLE \_\_\_\_\_  
 01 = 0.098" 4-40 INSERT (SOLDER SIDE) \_\_\_\_\_  
 02 = 0.236" 4-40 INSERT (SOLDER SIDE) \_\_\_\_\_  
 03 = 0.236" 4-40 INSERT (MATING SIDE) \_\_\_\_\_  
 CONTACT PLATING \_\_\_\_\_  
 1 = GOLD FLASH, ENTIRE CONTACT \_\_\_\_\_  
 2 = 30u" GOLD, ENTIRE CONTACT \_\_\_\_\_

ACCEPTS 28 - 24 AWG WIRE

RoHS COMPLIANT

UNITS = inch [mm]

DO NOT SCALE FROM DRAWING



THESE DRAWINGS AND SPECIFICATIONS ARE THE PROPERTY OF NorComp AND SHALL NOT BE REPRODUCED, COPIED OR USED AS THE BASIS FOR THE MANUFACTURE OR SALE OF APPARATUS WITHOUT WRITTEN PERMISSION.

DRAWN:

C. SMITH

DATE:

03/13/2007

NorComp

SCALE: NTS

SHEET 1 OF 2

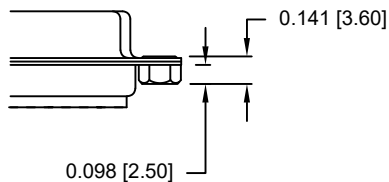
REV 19

DWG NO.

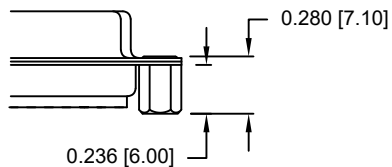
180-MYY-20YLYYY

ALL CLINCH-NUTS ARE 4-40 INTERNAL THREADS

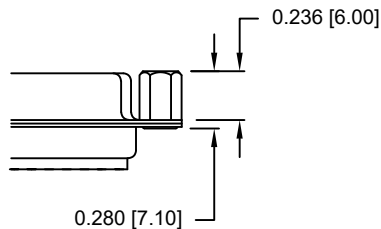
01X ..... 0.098" (SOLDER SIDE)



02X ..... 0.236" (SOLDER SIDE)



03X..... 0.236" (MATING SIDE)



RoHS COMPLIANT

UNITS = inch [mm]

DO NOT SCALE FROM DRAWING



THESE DRAWINGS AND SPECIFICATIONS ARE THE PROPERTY OF NorComp AND SHALL NOT BE REPRODUCED, COPIED OR USED AS THE BASIS FOR THE MANUFACTURE OR SALE OF APPARATUS WITHOUT WRITTEN PERMISSION.

DRAWN:

C. SMITH

DATE:

03/13/2007

NorComp

SCALE:

NTS

SHEET

OF

2

2

REV

19

DWG NO.

180-MYY-20YLYYY