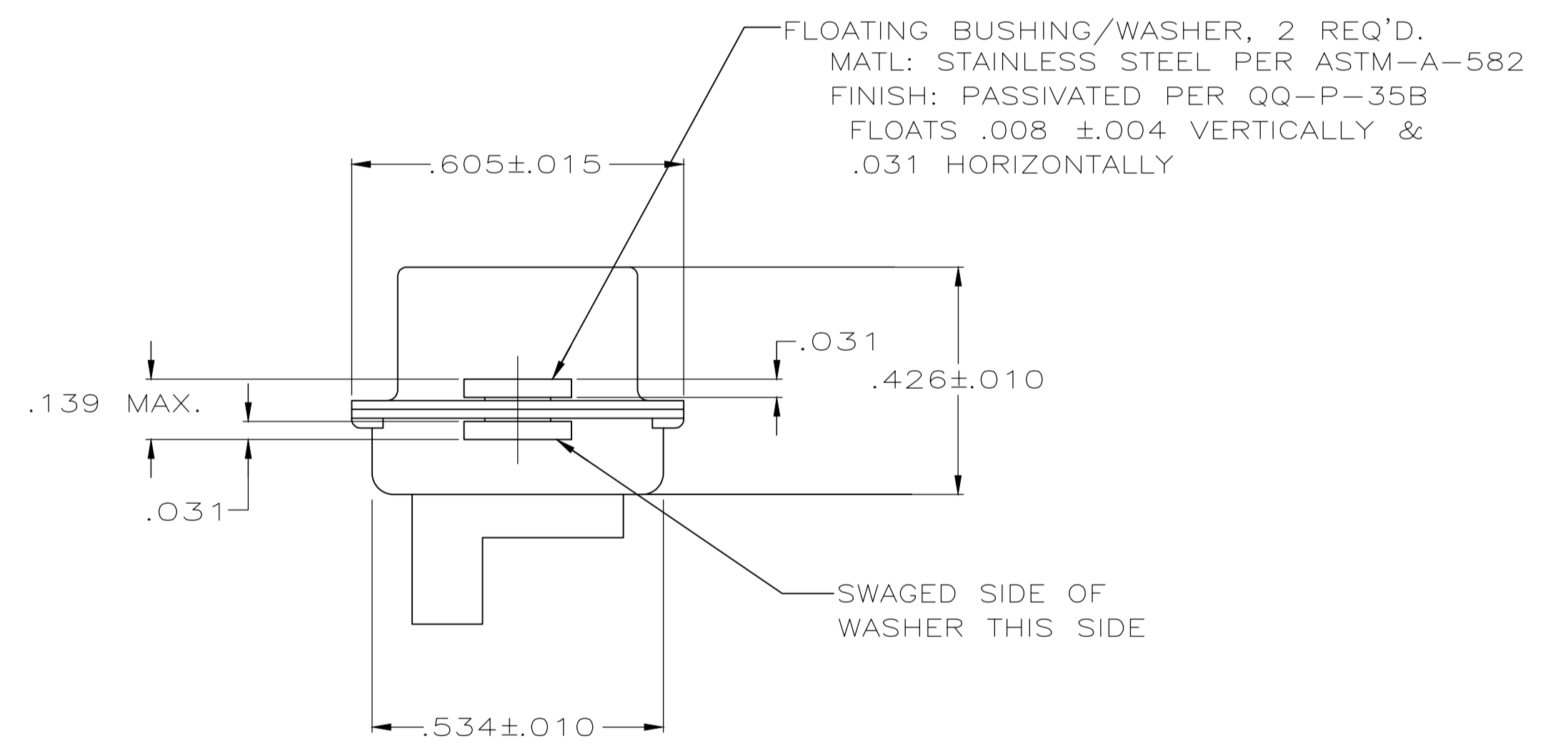
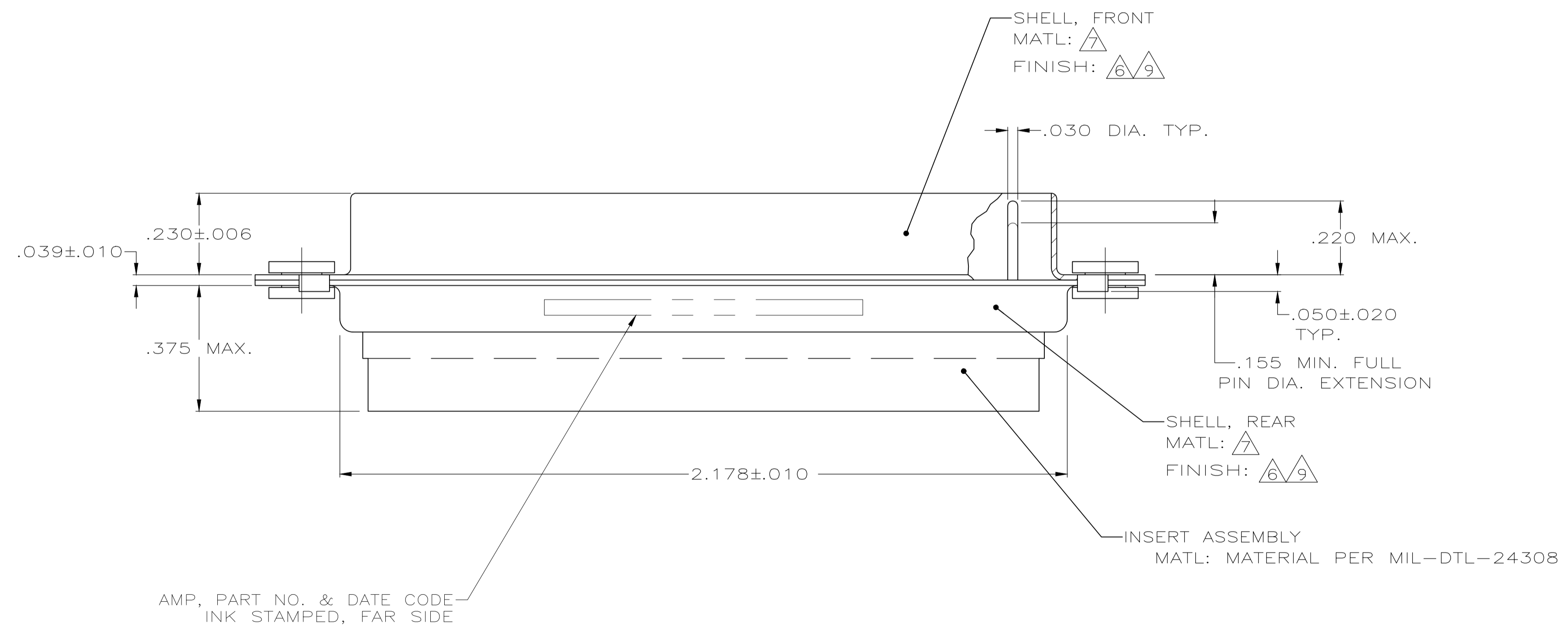


1. THIS PLUG WILL MATE WITH ANY 24C7, SIZE 5 RECEPTACLE IN AMPLIMITE SERIES.
  2. MAXIMUM WIRE INSULATION TO BE USED WITH THIS PLUG IS .068 DIA.
  3. THIS CONNECTOR ACCEPTS 7 POWER 8 COAX SOCKET CONTACTS IN POSITIONS A1 THRU A7, PURCHASED SEPARATELY.
  4. THIS CONNECTOR ACCEPTS SIZE 20 PIN SIGNAL CONTACTS IN POSITIONS 1 THRU 17.
  5. INSERTION/EXTRACTION TOOL USED FOR SIZE 20 PIN SIGNAL CONTACTS IS 91067-2.
6. FINISH: CADMIUM PLATED PER QQ-P-416  
 7. STEEL PER ASTM-A-109.  
 8. UL/CSA DESIGNATION STAMPED IN THIS AREA.  
 9. FINISH: ZINC PLATE PER ASTM-B-633 .000200-.000400 THK WITH SUPPLEMENTARY CHROMATE (Cr3+).



AMP, PART NO. & DATE CODE INK STAMPED, FAR SIDE

7/9	5-449919-1
7/6	449919-1
REMARKS	PART NO

THIS DRAWING IS A CONTROLLED DOCUMENT.

DIMENSIONS: INCHES	TOLERANCES UNLESS OTHERWISE SPECIFIED:	DIN	27-May-15
0. PLC ± -	1. PLC ± -	MANJUNATH G.M.	27-May-15
2. PLC ± -	3. PLC ± .005	CHK	CHARLES THOMAS
4. PLC ± -	ANGLES ± -	APVD	CHARLES THOMAS
MATERIAL	FINISH	NAME	27-May-15
		PRODUCT SPEC	
		APPLICATION SPEC	
		SIZE	CAGE CODE
		WEIGHT	DRAWING NO
		CUSTOMER DRAWING	RESTRICTED TO

PLUG ASSEMBLY, AMPLIMITE, 24C7, SIZE 5, SERIES 109, W/ FLOAT BUSHINGS  
 A1 00779 449919  
 SCALE 4:1 SHEET 1 OF 1 REV B