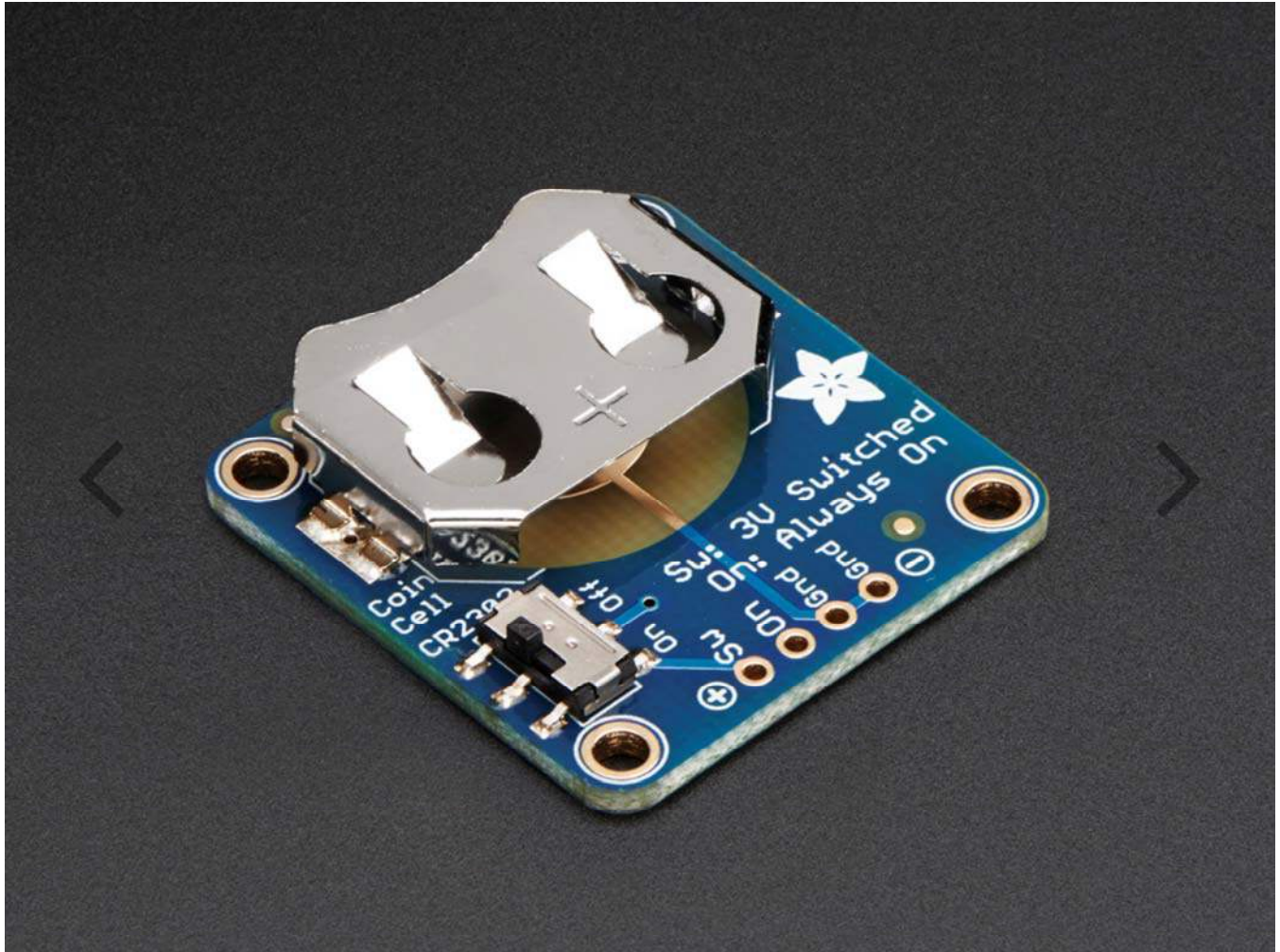


20mm Coin Cell Breakout w/On-Off Switch (CR2032)

PRODUCT ID: 1871



DESCRIPTION

Simple but effective – this sewable breakout board has a CR2032 coin cell battery holder soldered on, an on/off switch and 0.1" pitch breakout pins for easy connecting. Great for powering very low-current projects, or adding a battery backup circuit to a real-time-clock or similar. There's two ground pins, one 'switched' power pin, and one pin that is always on.

Comes with one fully assembled and tested breakout plus a small stick of 0.1" header so you can solder it on and plug into a breadboard. Coin cell battery is not included.

Technical Details

Dimensions:

29mm x 28mm x 1.6mm / 1.1" x 1.1" x 0.06"

Mounting hole distance: 22mm x 22mm / 0.9" x 0.9"

Weight: 3.5g