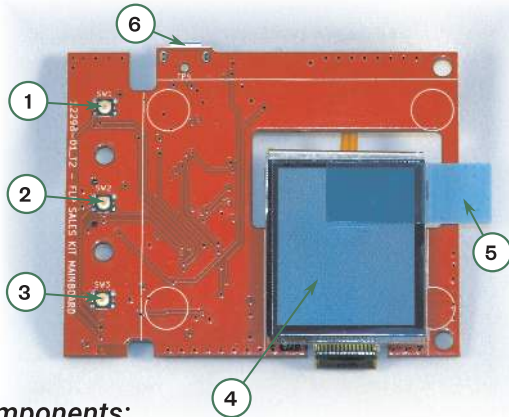


FLP Dev Kit Quick Start



Kit Components:

- This Guide
- USB Cable
- FLP Dev Kit Board:

Front Side:

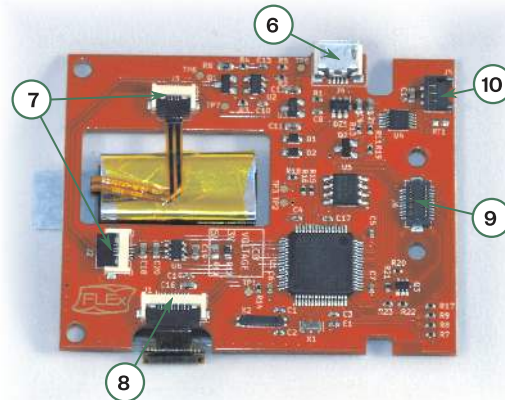
1. Power Switch (SW1)
2. LED Switch (SW2)
3. "Next" Switch (SW3)
4. Memory LCD
5. Pull Tab
6. Micro USB Connector (J4)

Back Side:

6. Micro USB Connector (J4)
7. LED FFC Connectors (J2, J3)
8. LCD FFC Connector (J1)
9. 20 Pin Expansion Connector (J6)
10. Li-Ion Battery Connector (J5)

Note:

- The optical surface underneath the protective film is very delicate and will be permanently marked by fingerprints. Use care when removing it with the pull tab (5).



Quick Start Procedure:

- Connect the supplied USB cable into the board's Micro USB Connector (6).
- Connect the other end of USB cable to a USB power supply (Computer, USB hub or smartphone charger).
- The display will start up and go through the sequence of pre-recorded images.
- Toggle the LED on and off by pressing the LED button (2).
- Images can be flipped through manually using the "Next" button (3). Holding the button down for 3 seconds will resume the automatic sequence.
- Visit us at the URL below to download the software to control the board from your PC and load your own custom images into the LCD.

For more information and support visit us at:

<http://www.azumotech.com>