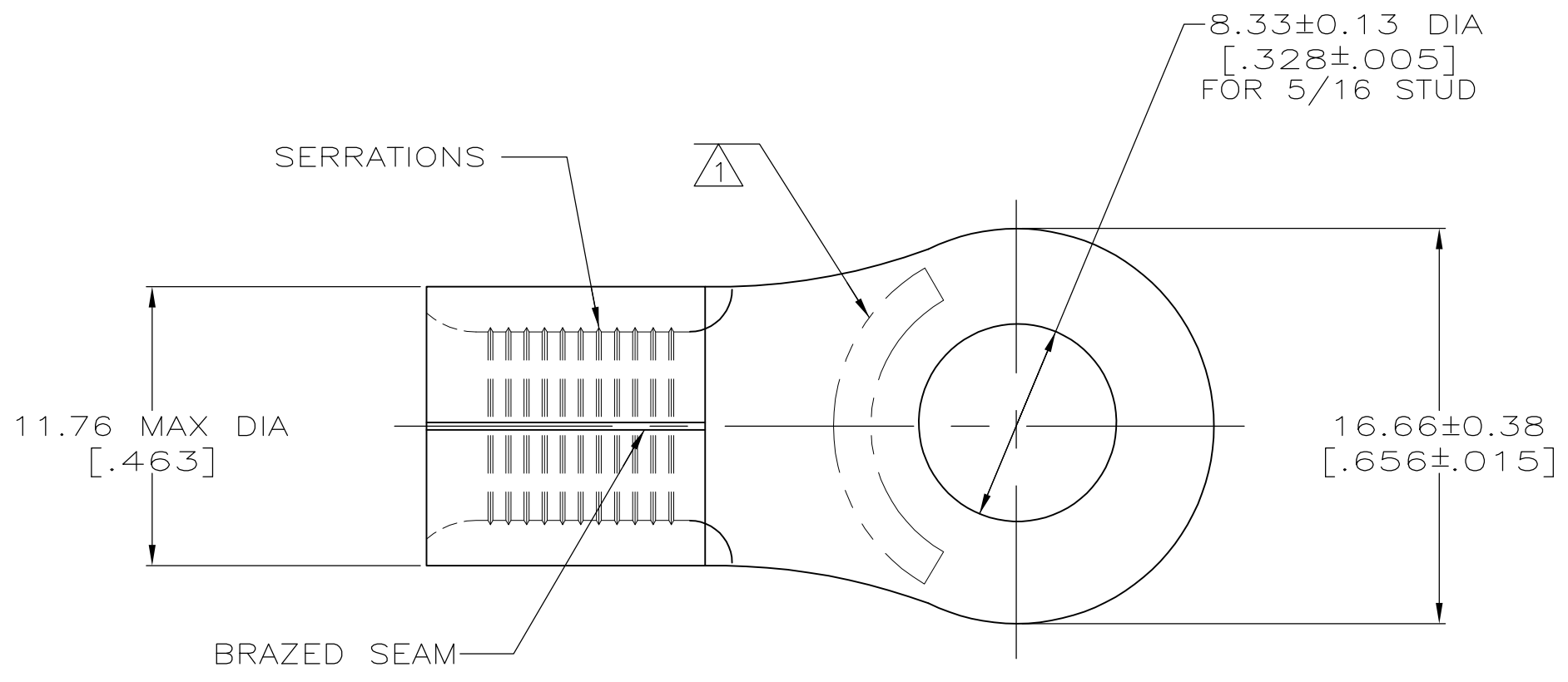
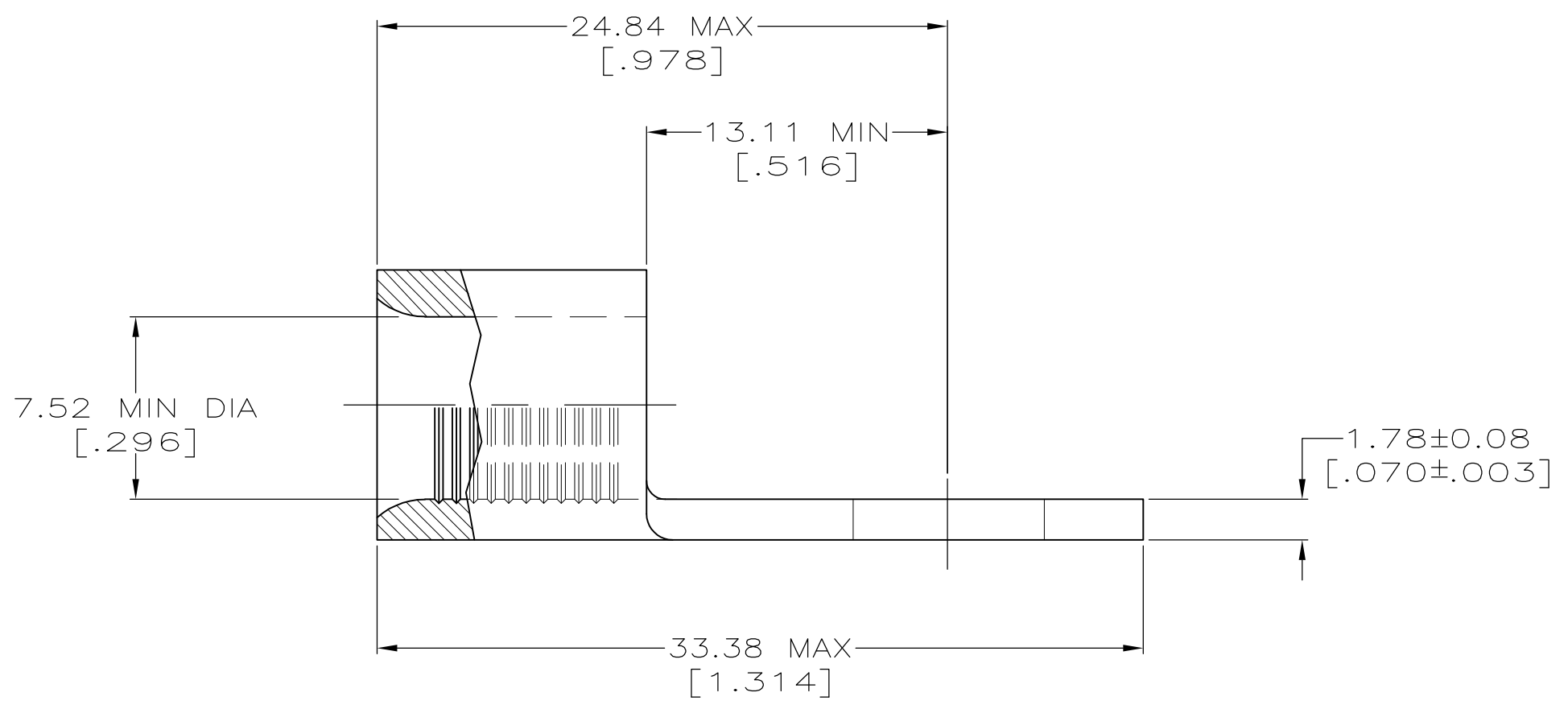


METRIC
 DIMENSIONS LISTED IN mm [INCHES]



| | |
|----------------------------|---------------------------|
| AMP WIRE RANGE | E13288 Listed |
| 4 AWG SOLID OR STRANDED | 4 AWG STRANDED |
| LR7189 Certified | MILITARY P/N AND CLASS |
| 4 AWG SOLID OR STRANDED | NOT APPLICABLE |

STAMP AMP 4* APPROX AS SHOWN



| | | | |
|-------------------------|----------------|------------------|-----------|
| SUPERCEDED BY 8-33470-2 | 25 | LOOSE PIECE, BAG | 8-33470-5 |
| | 50 | LOOSE PIECE, BOX | 8-33470-2 |
| | 500 | ON TAPE, REEL | 2-33470-2 |
| | 500 | LOOSE PIECE, BOX | 33470-1 |
| | - | LOOSE PIECE | 33470 |
| QUANTITY | PACKAGING TYPE | | PART NO |

| | | |
|--|--|---|
| AMP INCORPORATED CUSTOMER SERVICE SYSTEMS | | MAX RECOMMENDED OPERATING TEMPERATURE: 170° C MAX |
| FOR ADDITIONAL PRODUCT INFORMATION OR COPIES OF DRAWINGS AND TECHNICAL DOCUMENTS | PRODUCT INFORMATION CENTER 1-800-522-6752 | VOLTAGE RATING: NOT APPLICABLE |
| FOR APPLICATION TOOLING INFORMATION | TOOLING ASSISTANCE CENTER 1-800-722-1111 | WIRE CROSS SECTIONAL AREA RANGE: 16.8-26.7mm ² [33,100-52,600] CIR MILS SOLID OR STRANDED |
| FOR ORDER ENTRY | 1-800-526-5142 | THIS DRAWING IS A CONTROLLED DOCUMENT FOR AMP INCORPORATED. IT IS SUBJECT TO CHANGE AND THE CONTROLLING ENGINEERING ORGANIZATION SHOULD BE CONTACTED FOR THE LATEST REVISION. |

| | | | |
|---|--|---|---|
| THIS DRAWING IS A CONTROLLED DOCUMENT. | | DWN TA BRINKMAN 3-29-93 | TE Connectivity |
| DIMENSIONS: mm [INCHES] | | CHK DA PATTERSON 3-29-93 | |
| TOLERANCES UNLESS OTHERWISE SPECIFIED: | | APVD DE MILLER 3-29-93 | NAME TERMINAL, RING TONGUE, SOLISTRAND™ |
| 0 PLC ± - 1 PLC ± - 2 PLC ± - 3 PLC ± - 4 PLC ± - ANGLES ± ± - | | PRODUCT SPEC - | SIZE A2 |
| MATERIAL COPPER PER ASTM B-152 ANNEALED | | FINISH TIN PLATE 0.00254[0.00100]MIN THK PER MIL-T-10727 | APPLICATION SPEC - |
| | | WEIGHT - | CAGE CODE 00779 |
| | | DRAWING NO G-33470 | |
| | | RESTRICTED TO - | |
| | | CUSTOMER DRAWING | |
| | | SCALE 4:1 | SHEET 1 of 1 |
| | | REV H2 | |