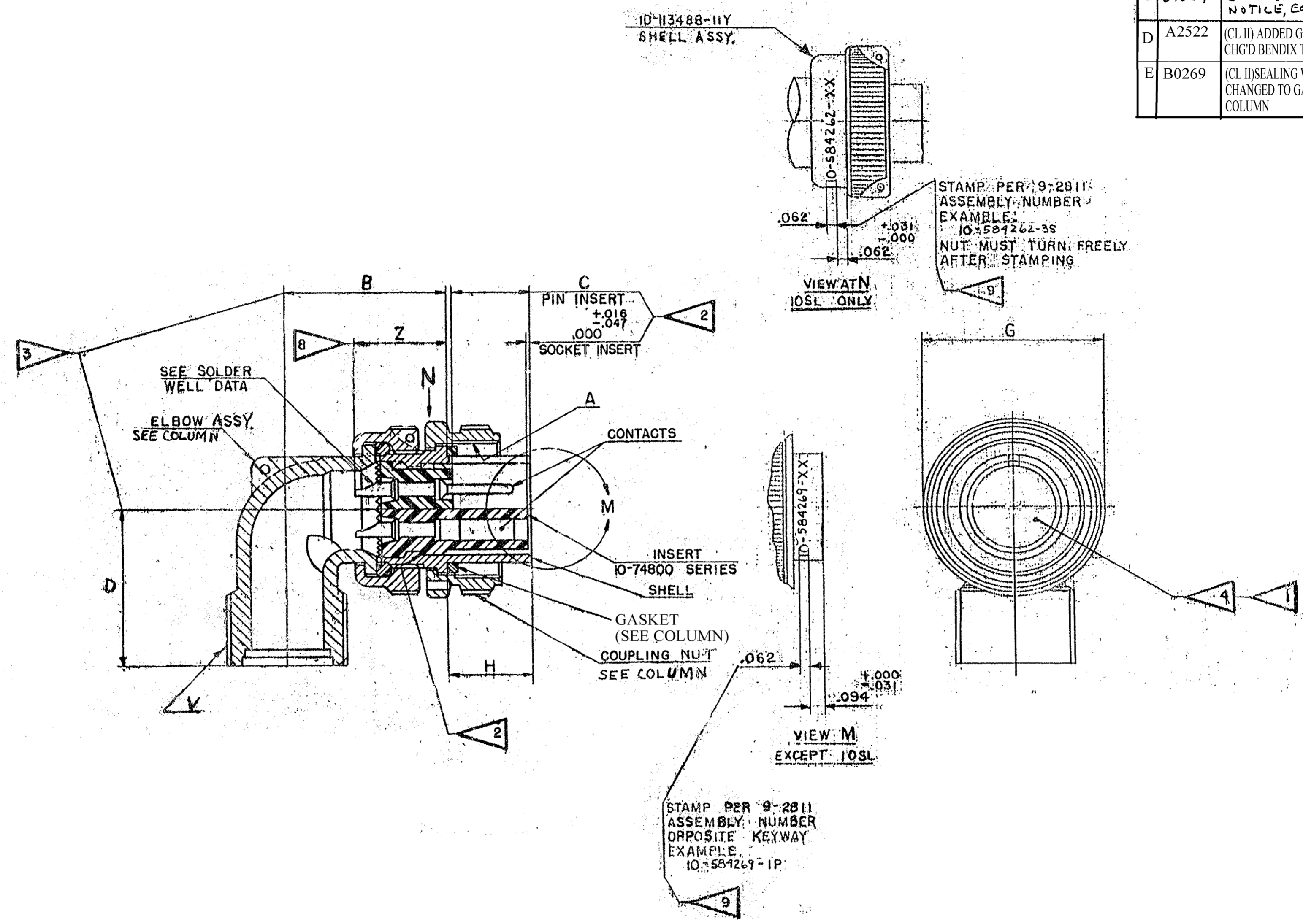


REV.	DATE	BY	APPR.
A			
B	8/29/75	JED	JED
C	2-9-00	JED	JED
D	10-23-09	JONES	
E	12-20-11	JONES	



USE OF THIS DOCUMENT IS UNLIMITED. DOCUMENTS REFERENCED HEREON CONTAIN LIMITED RIGHTS DATA.

SOLDER WELL DATA						
CONTACT SIZE	0	4	8	12	16	16M
WELL DIA	469 \pm .003	332 \pm .003	209 \pm .004	116 \pm .004	078 \pm .004	078 \pm .004
WELL DEPTH	\pm .031 -.000	.625	.500	.250	.188	.188
SOLDER WELLS ARE FILLED WITH 50-50 TIN-LEAD SOLDER						
MATERIAL SPEC.	PROCESS SPEC. SEE SHEET 2.	AMPHENOL CORPORATION 40-60 DELAWARE AVENUE SIDNEY, NEW YORK			TOLERANCES UNLESS OTHERWISE SPECIFIED DECIMALS \pm .010	
MEAS. TREAT SPEC.	FINISH SPEC.	NAME CONNECTOR, ELECTRICAL PLUG, TYPE SC() MC, 90° SPECIAL BLACK ZINC ALLOY PLATE			NEXT ASSEMBLY WEIGHT SEE PARTS LIST	
D'MAN		CHECKER	MAT.	ST'OS	CH. D'MAN	APPROVED
ALGER		JED				6-16-94
5-31-74		6-16-94				NONE
SCALE		SUPERSEDED BY		SCALE		
NONE				NONE		
10-584260/279		10-584260/279				

NOTES:
SEE SHEET 2

ASSEMBLY NUMBER	MS REF	DETAILS			DIMENSIONS										SIZE	GASKET			
		SHELL	COUPLING NUT	ELBOW ASSY	A		B	C	D	E	F	G	H	V			Z		
					THREAD	SIZE CLASS 2B								PITCH DIA				MAX	+0.16 -0.47
10-584260-	3108-8S-	10-37266-8Y	10-37265-8Y	10-35922-8Y	.5000-28 UNEF	.4768-.4816	.927	.492	.916			.750	.531	.5000-28UNEF	.4768-.4720	.562	8S	10-035957-081	
10-584261-	-10S-	10-37266-10Y	10-37265-10Y	-10Y	.6250-24 NEF	.5979-.6031	.927	.492	.916			.875	.531	.5000-28UNEF	.4768-.4720		10S	10-035957-081	
10-584262-	-10SL-	10-113488-11Y	SHELL ASSY		-12Y	.6250-24 NEF	.5979-.6031	.951		.979		.946	.531	.6250-24UNEF	.5979-.5927		10SL	10-035957-081	
10-584263-	-12S-	10-37266-12Y	10-37265-12Y	-12Y	.7500-20 UNEF	.7175-.7232	.956	.492	.979			1.000	.531				12S	10-035957-101	
10-584264-	-12-	-13Y	-13Y	-13Y	.7500-20 UNEF	.7175-.7232	1.143	.679	.974			1.000	.719			.812	12	10-035957-101	
10-584265-	-14S-	-14Y	-14Y	-14Y	.8750-20 UNEF	.8425-.8482	1.020	.492	1.041			1.125	.531	.7500-20UNEF	.7175-.7118	.562	14S	10-035957-121	
10-584266-	-14-	-15Y	-15Y	-15Y	.8750-20UNEF	.8425-.8482	1.207	.679	1.041			1.125	.719	.7500-20UNEF	.7175-.7118	.812	14	10-036957-121	
10-584267-	-16S-	-16Y	-16Y	-16Y	1.0000-20UNEF	.9675-.9734	1.146	.492	1.104			1.250	.531	.8750-20UNEF	.8425-.8368	.562	16S	10-035957-141	
10-584268-	-16-	-17Y	-17Y	-17Y	1.0000-20UNEF	.9675-.9734	1.333	.679	1.104			1.250	.719	.8750-20UNEF	.8425-.8368	.812	16	10-035957-141	
10-584269-	-18-	-18Y	-18Y	-18Y	1.1250-18 UNEF	1.0889-1.0951	1.396		1.198			1.344		1.0000-20UNEF	.9675-.9616		18	10-035957-161	
10-584270-	-20-	-20Y	-20Y	-20Y	1.2500-18UNEF	1.2139-1.2202	1.598		1.260			1.469		1.1875-18UNEF	1.1514-1.1450		20	10-035957-181	
10-584271-	-22-	-22Y	-22Y	10-36055-22Y	1.3750-18UNEF	1.3389-1.3452	1.598		1.197			1.594		1.1875-18UNEF	1.1514-1.1450		22	10-035957-201	
10-584272-	-24-	-24Y	-24Y	-24Y	1.5000-18UNEF	1.4639-1.4704	1.786		1.322			1.719		1.4375-18UNEF	1.4014-1.3949		24	10-035957-221	
10-584273-	-28-	-28Y	-28Y	-28Y	1.7500-18 UNS	1.7139-1.7205	1.786		1.385			1.969		1.4375-18UNEF	1.4014-1.3949		28	10-035957-241	
10-584274-	-32-	-32Y	-32Y	-32Y	2.0000-18 UNS	1.9639-1.9706	2.020		1.698			2.219		1.7500-18 UNS	1.7139-1.7073		32	10-035957-281	
10-584275-	-36-	-36Y	-36Y	-36Y	2.2500-16 UN	2.2094-2.2164	2.145		1.760			2.470		2.0000-18 UNS	1.9639-1.9573		36	10-035957-321	
10-584276-	-40-	-40Y	-40Y	-40Y	2.5000-16 UN	2.4594-2.4666	2.270		1.916			2.719		2.2500-16 UN	2.2094-2.2024		40	10-035957-361	
10-584277/279					NOT AVAILABLE														

NOTES

- FOR MATING RECEPTACLE ASSEMBLIES SEE DRAWINGS 10-602040/059.
- FOR CONTACT SIZE, SPACING, & SERVICE RATING SEE MIL-STD-1651.
- DIMENSIONS INDICATE FINAL INSTALLATION FOR STORAGE & SHIPPING. ELBOW ASSEMBLY MUST BE LOOSELY COUPLED.
- DIMENSIONS MUST BE MAINTAINED WHEN INSERTS ARE PRESSED FIRMLY AGAINST INDICATED SHOULDER.
- INSERTS AND CONTACTS ARE REMOVABLE.

11. USE OF TEFLON TAPE (MIL-T-27730, 1/4-INCH WIDE) ON THE ACCESSORY THREADS FOR SEALING POTTING MATERIAL IS PERMISSIBLE. WIND THE TAPE AROUND THE THREAD IN A CLOCKWISE DIRECTION WITH A MAXIMUM OVERLAP OF 1/4-INCH. THE TAPE SHOULD NOT BE ALLOWED TO INTERFERE WITH ANY COUPLING NUT OPERATION.

- UNITS ILLUSTRATED MEET THE APPLICABLE REQUIREMENTS OF MIL-C-5015.
- SEE WORK ORDER FOR PERMISSIBLE ADDITIONAL OR ALTERNATE STAMPING.
- INCREASE Z DIMENSION BY .312 FOR SIZE "O" CONTACTS ONLY.
- ALL LOCKWIRE HOLES ARE .045 DIA MIN.
- TO COMPLETE ASSEMBLY NUMBER & REF ADD APPLICABLE INSERT ARRANGEMENT SUFFIX TO BASE NUMBERS LISTED ABOVE. (FOR ALTERNATE ARRANGEMENTS REFER TO 9-24371)

MATERIAL SPEC.	PROCESS SPEC. ASSY 9-3103-1 TEST 9-3106-5	AMPHENOL CORPORATION 40-60 DELAWARE AVENUE SIDNEY, NEW YORK				TOLERANCES UNLESS OTHERWISE SPECIFIED DECIMALS ±.010	
FINISH SPEC.	9-2811,9-2437	NAME CONNECTOR, ELECTRICAL PLUG, TYPE SC1 (MC, 90° SPECIAL BLACK ZINC ALLOY PLATE				NEXT ASSEMBLY	
DATE	5-31-94	CHECKED	MAT.	ST-DE	CH. D'MAN	APPROVED	SCALE
1901 ACC.	CO. REC.	5-31-94	6-16-94			Alger	NONE
						SUPERSEDED BY 10-158719/737	
						10-584260/279	
						77836 SHEET 2 OF 2	