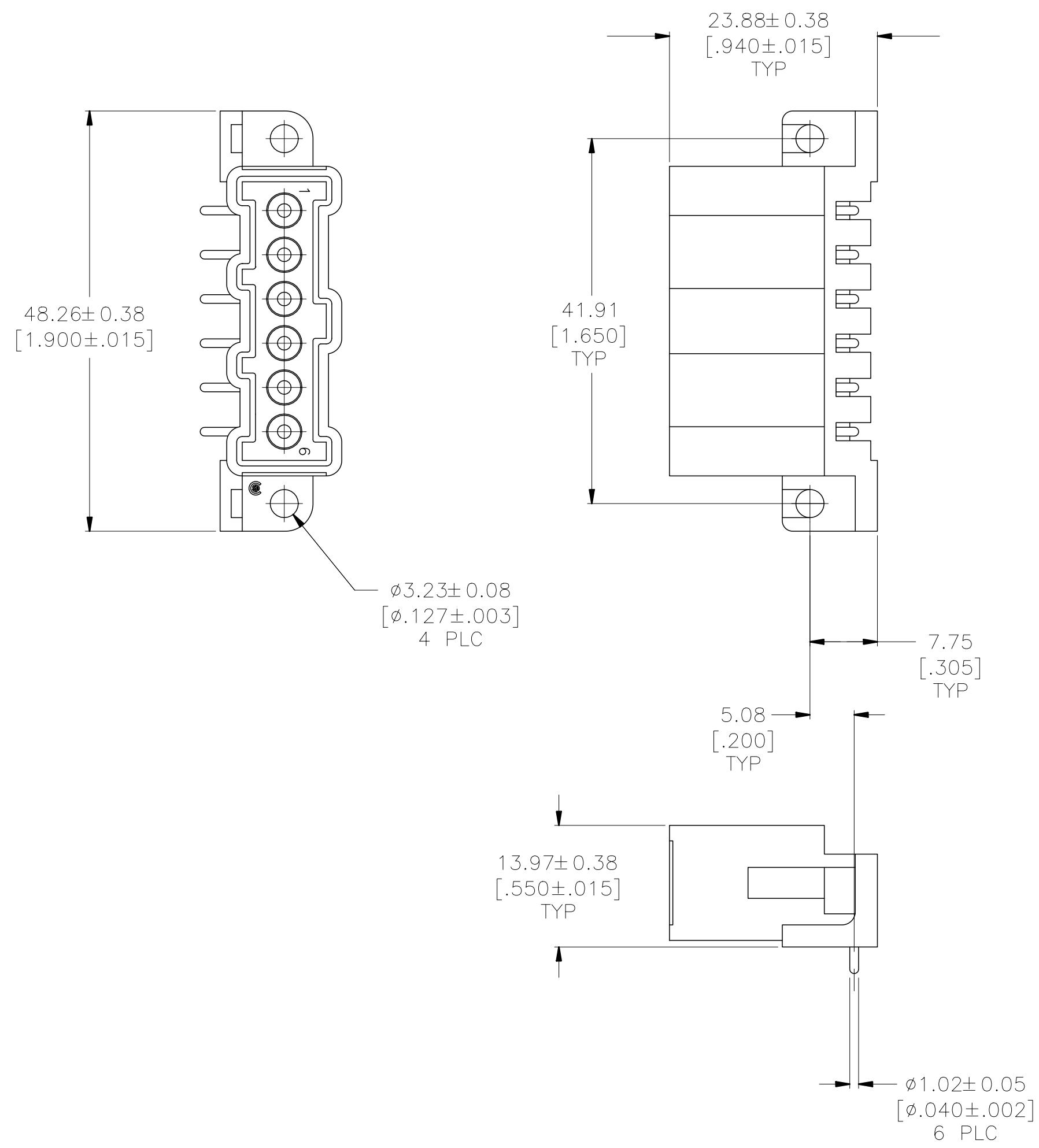


THIS DRAWING IS UNPUBLISHED. RELEASED FOR PUBLICATION
 © COPYRIGHT - TE Connectivity ALL RIGHTS RESERVED.

REVISIONS					
P	LTR	DESCRIPTION	DATE	DWN	APVD
	K	REVISED PER ECO-20-001083	30JAN2020	SM	MZ
	G1	REVISED PER ECO-09-021826	12JAN10	KK	AEG
	H	REVISED PER ECO-17-011181	03AUG2017	RS	MZ
	J	REVISED PER ECO-18-000443	30JAN2018	RS	MZ



- ① HOUSING MATERIAL: PA66, BLACK, UL 94 V-0 RATED.
- ② BRASS PER ASTM B36.
- ③ $3.81 \mu\text{m}$ [$.000150$] MIN TIN-LEAD OVER $2.54 \mu\text{m}$ [$.000100$] MIN COPPER.
- ④ $3.81 \mu\text{m}$ [$.000150$] MIN TIN OVER $2.54 \mu\text{m}$ [$.000100$] MIN COPPER.
- ⑤ OBSOLETE PARTS: OBSOLETE CIS STREAMLINING PER D.RENAUD/D.SINISI

⑤	OBSOLETE	④	12.83	[.505]	-208116-5-
		④	3.05	[.120]	208116-4
	OBSOLETE	③	12.83	[.505]	208116-3
	OBSOLETE	③	3.05	[.120]	208116-1
		③	CONTACT FINISH	L	PART NUMBER

THIS DRAWING IS A CONTROLLED DOCUMENT.

DWN	J.MCCLINTON	11/06/91
CHK	R. STONE	11-8-91
APVD	-	-
PRODUCT SPEC	NAME	
APPLICATION SPEC	SIZE	
WEIGHT	-	CAGE CODE
FINISH	DRAWING NO	
CONTACTS: SEE TABLE	RESTRICTED TO	
CUSTOMER DRAWING		SCALE
		2:1
		SHEET
		1 OF 1
		REV
		K

STE TE Connectivity

HEADER ASSEMBLY, PIN, 6 POSITION, METRIMATE

SIZE: A2 CAGE CODE: 00779 DRAWING NO: C-208116