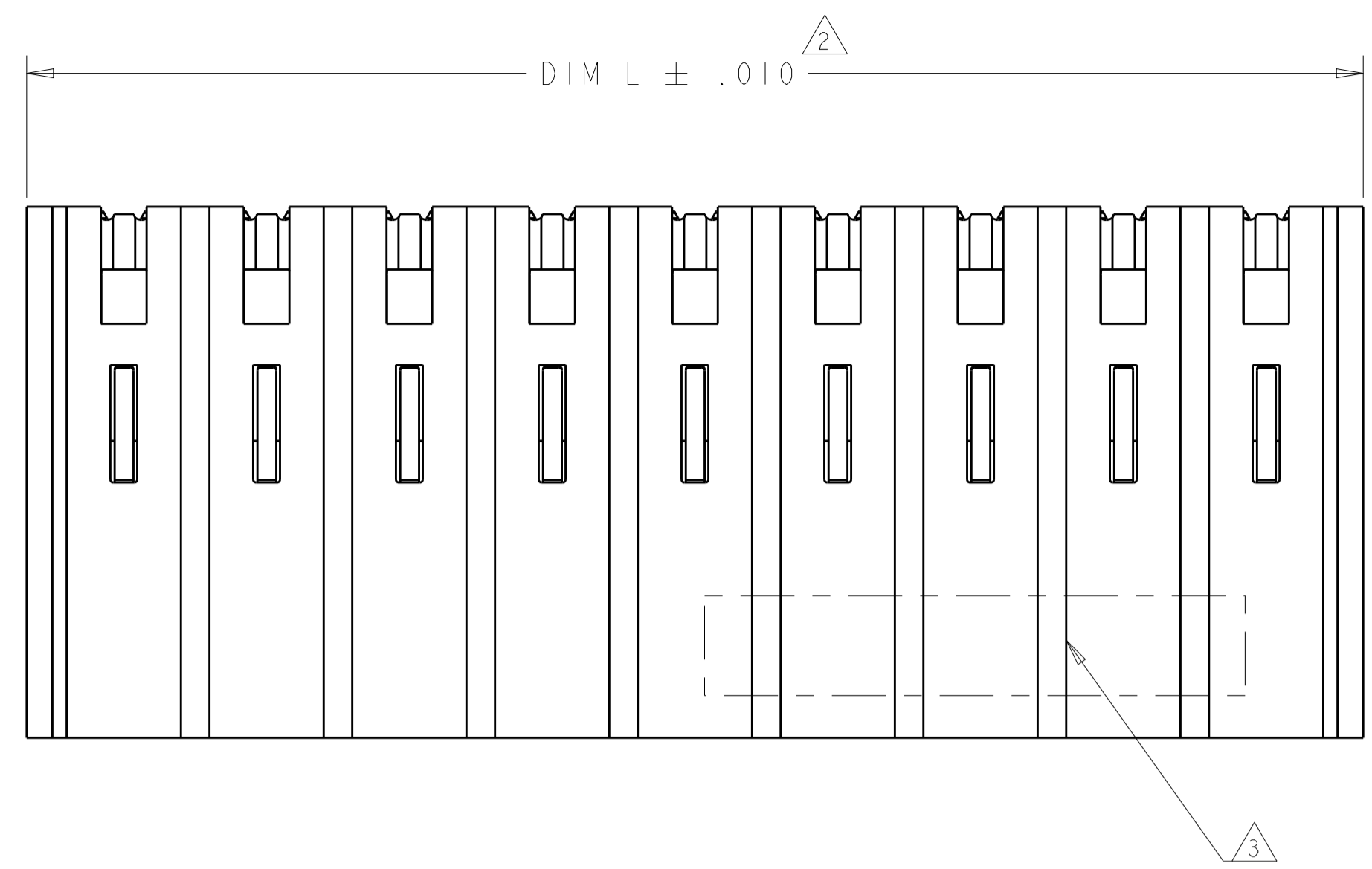
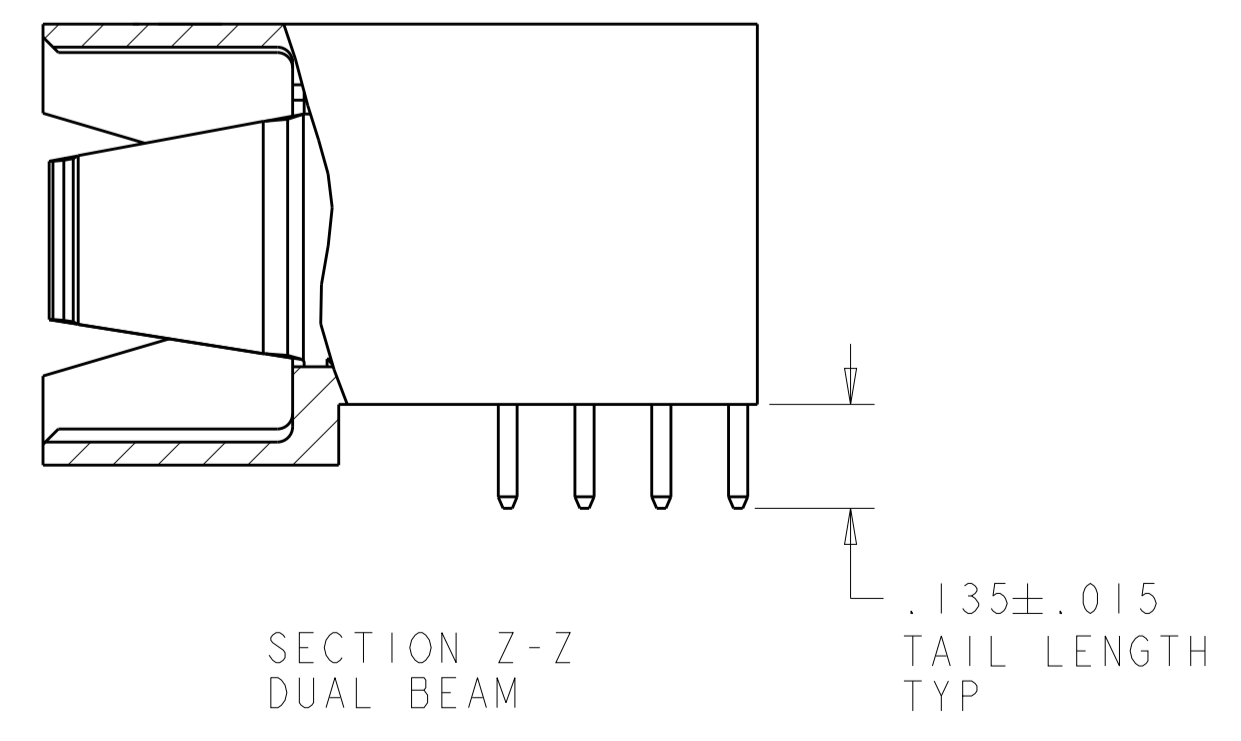
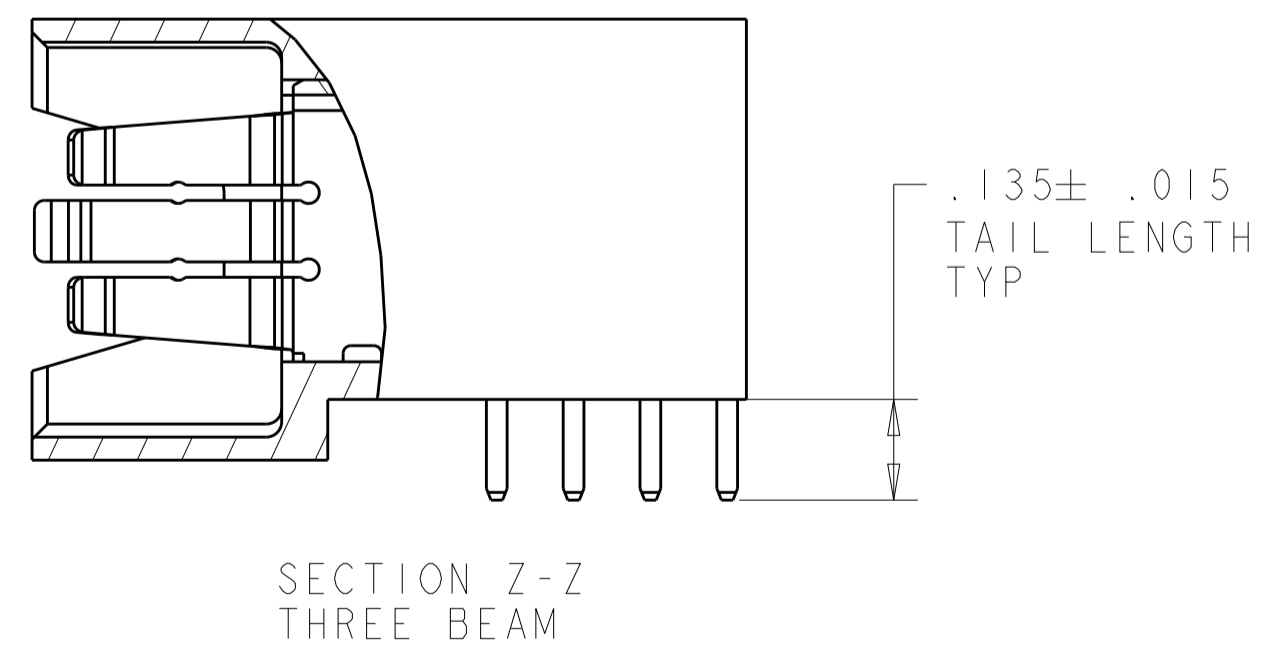
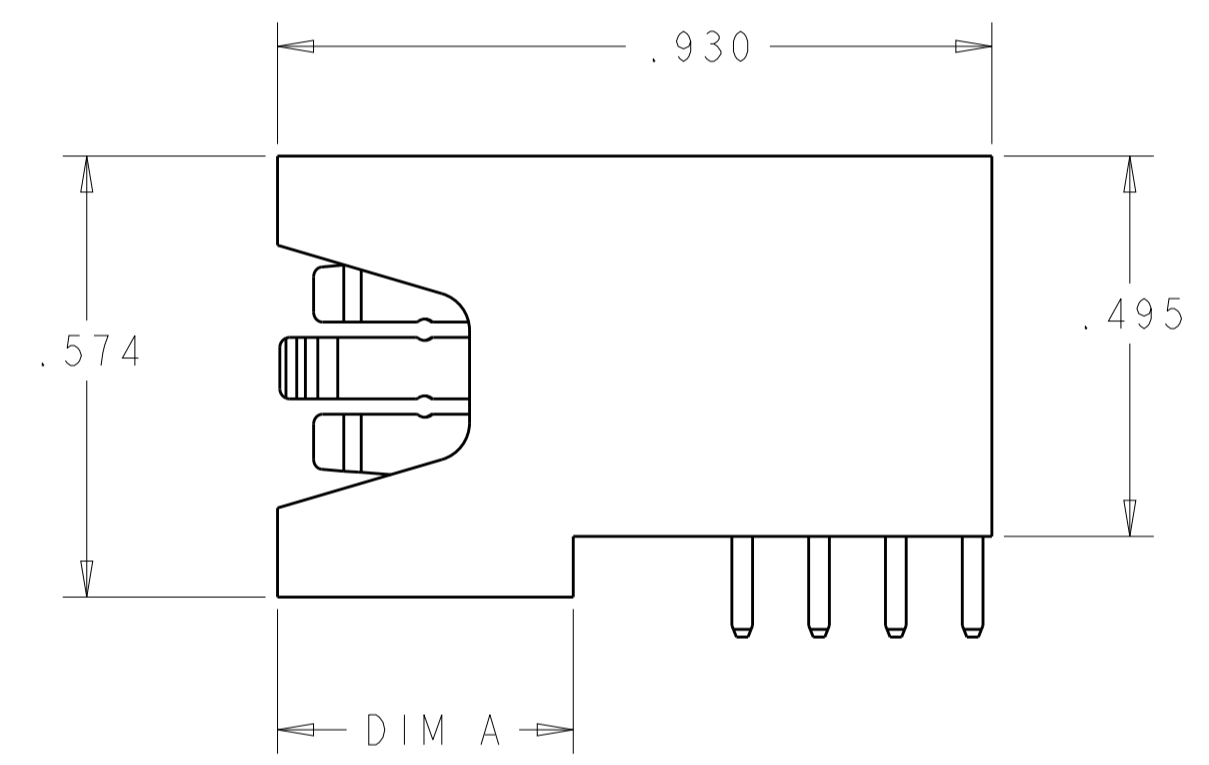
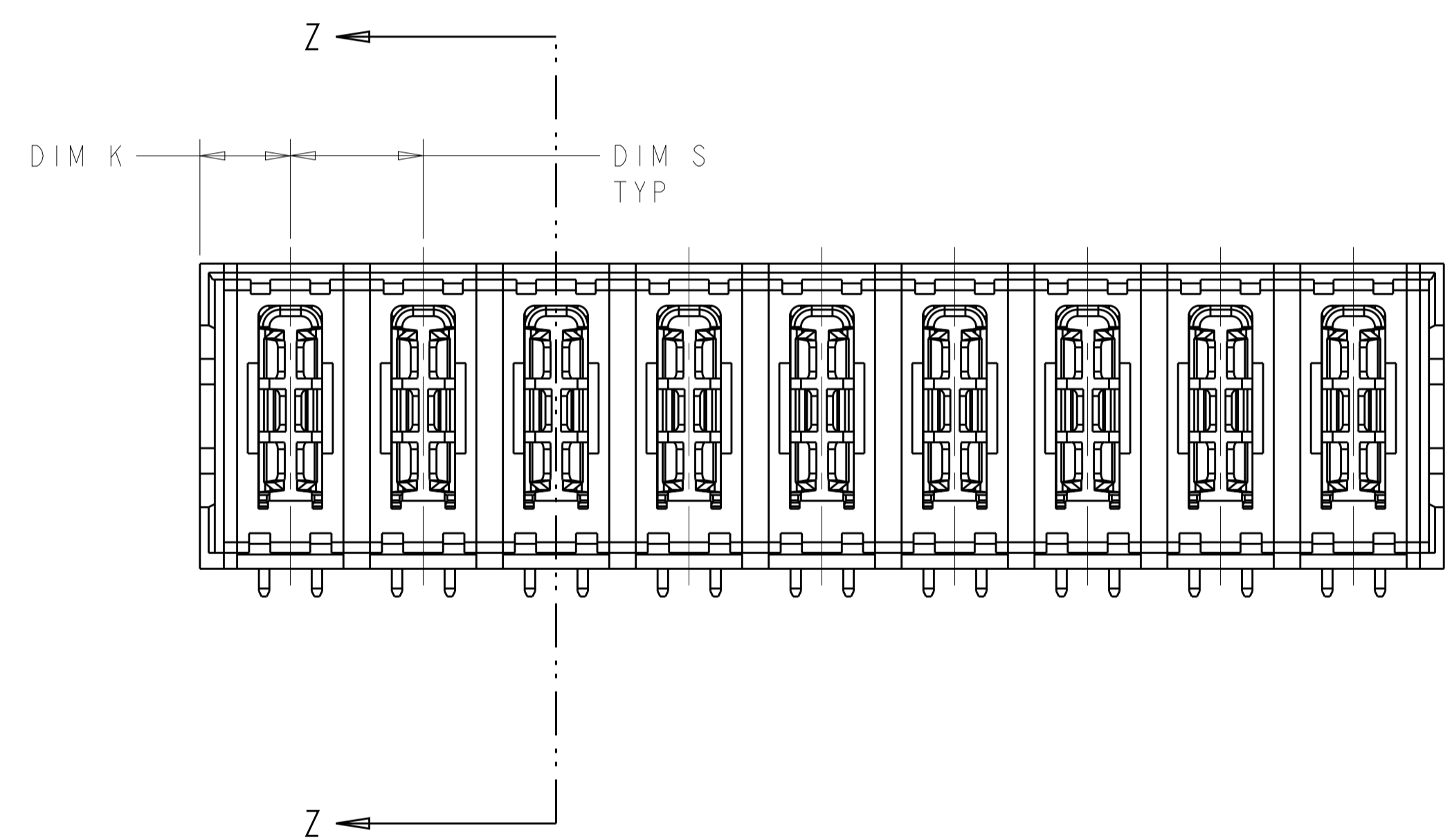


| LOC | DIST | REVISIONS   |           |     |      |
|-----|------|-------------|-----------|-----|------|
| P   | LTN  | DESCRIPTION | DATE      | DWN | APVD |
| ES  | 00   | A3 ADVISED  | 20MAR2013 | ML  | SZ   |



- 1 DIMENSION S IS CENTERLINE SPACING OF POWER MODULE
- 2 THE MAXIMUM OVERALL LENGTH (DIM L) OF A PART IS 8.00
- 3 "AMP" PART NUMBER AND DATE CODE TO BE MARKED IN AREA SHOWN. PARTS UNDER 2.00 LONG MAY BE MARKED ON BOTH SIDES.
- 4 MATERIAL: HOUSING - GLASS FILLED HIGH TEMP THERMO PLASTIC, UL94 V-0  
POWER CONTACT - HIGH CONDUCTIVITY COPPER ALLOY
- 5 CONTACT PLATING:  
NOBLE METAL PLATED ON THE FUNCTIONAL CONTACT AREA OF POWER AND SIGNAL CONTACTS.
- 6 MECHANICAL CONNECTOR KEEP OUT ZONE
- 7 DATUM AND BASIC DIMENSIONS ESTABLISHED BY CUSTOMER
- 8 PCB - ALL HOLE DIAMETERS ARE FINISHED HOLE SIZES.
- 9 PCB - .0453±.0010 DRILLED HOLES WITH .0003 WITH Sn OVER .001 TO .003 Cu PLATING TO ACHIEVE A .040±.003 DIA HOLE
- 10 NOT RELEASED FOR PRODUCTION.



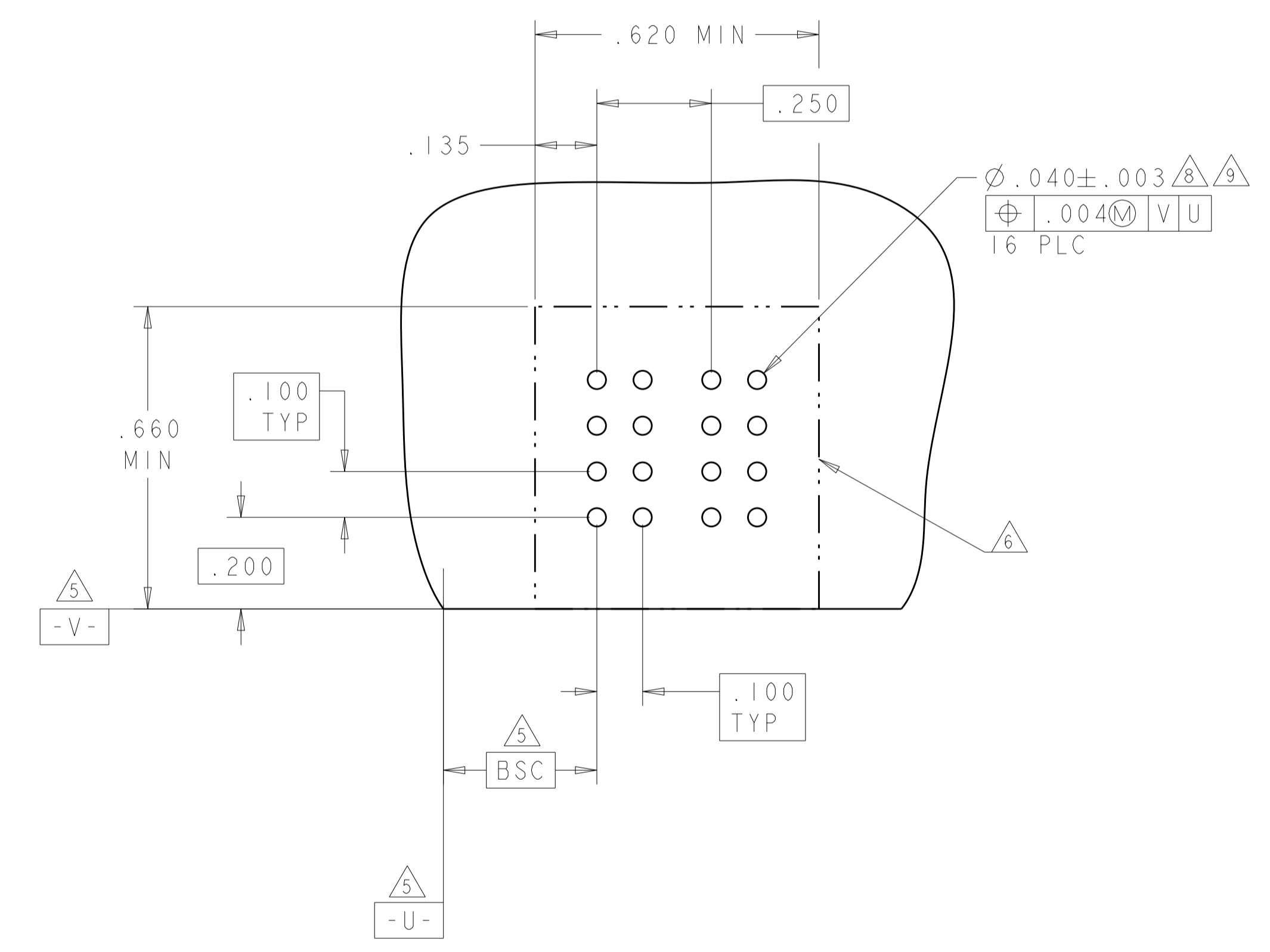
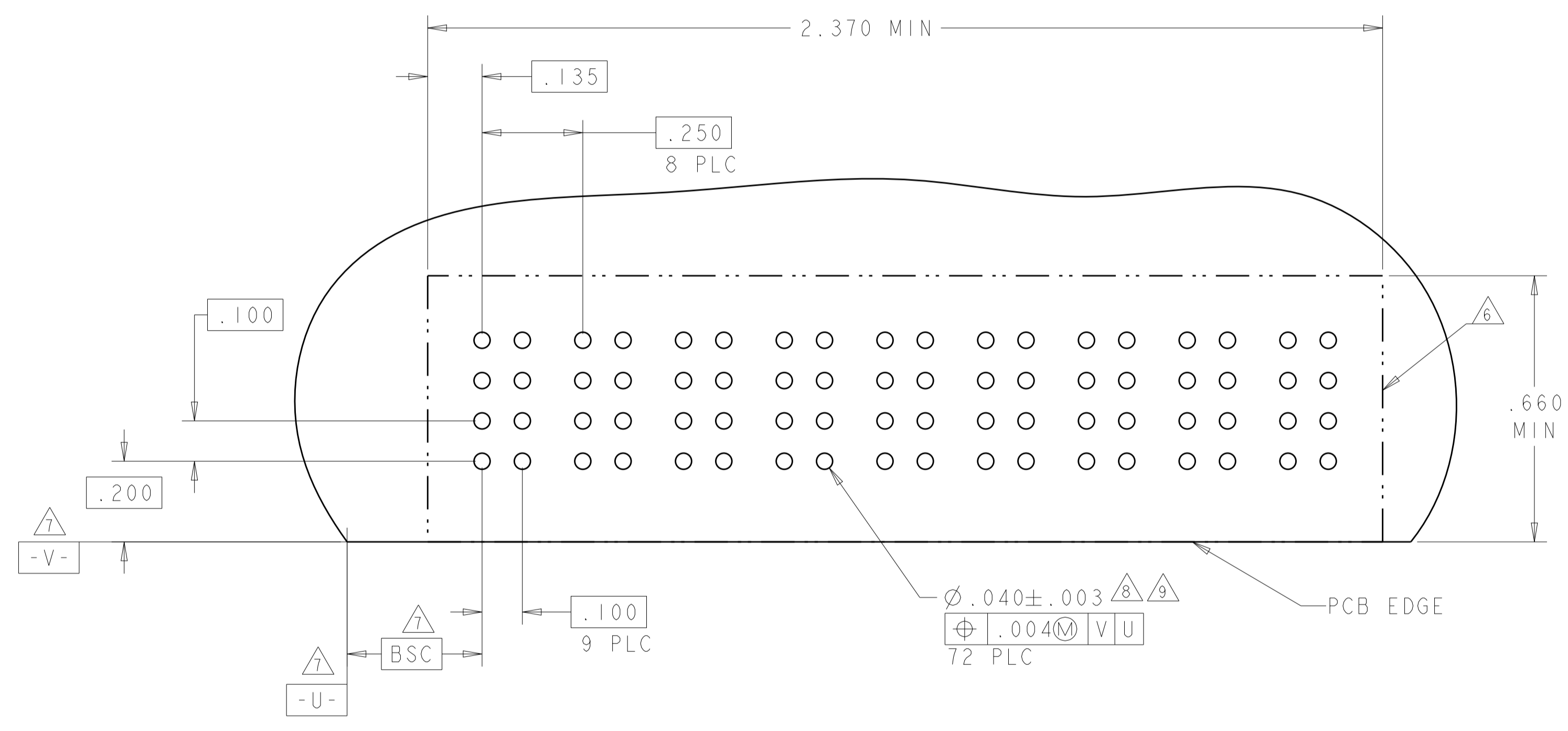
| .325  | .250  | .520  | .135  | 2P          | 1892107-3   |
|-------|-------|-------|-------|-------------|-------------|
| .385  | .250  | .590  | .170  | 2P          | 1892107-2   |
| .385  | .250  | 2.340 | .170  | 9P          | 1892107-1   |
| DIM A | DIM S | DIM L | DIM K | DESCRIPTION | PART NUMBER |

|  |              |                           |   |
|--|--------------|---------------------------|---|
| THIS DRAWING IS A CONTROLLED DOCUMENT. |              | DWN: Denny Zhu 16JAN2007  | <br>TE Connectivity   |
| DIMENSIONS: INCHES                     |              | CHK: Sunny Zhao 16JAN2007 |   |
| TOLERANCES UNLESS OTHERWISE SPECIFIED: |              | APVD: S. YAO              | NAME: RIGHT ANGLE HEADER ASSEMBLY W/O GUIDES MULTI-BEAM XLE |
| 0 PLC ±.01                             | 1 PLC ±.01   | 2 PLC ±.01                | PRODUCT SPEC: 108-1973                                      |
| 3 PLC ±.005                            | 4 PLC ±.0020 | ANGLES ±.7°               | APPLICATION SPEC: 114-13038                                 |
| MATERIAL: 4                            | FINISH: 5    | WEIGHT: -                 | SIZE: A1  |
| Customer Drawing                       |              | CAGE CODE: 1892107        | RESTRICTED TO: -  |
| SCALE: 4:1                             |              | SHEET: 1 OF 3             | REV: A3   |

| LOC | DIST | REVISIONS   |      |     |      |
|-----|------|-------------|------|-----|------|
| P   | LTM  | DESCRIPTION | DATE | DWN | APVD |
| ES  | 00   | SEE SHEET 1 |      |     |      |
|     |      |             |      |     |      |
|     |      |             |      |     |      |

| PART NUMBER | ROWS             | POWER |    |    |    |    |    |    |    |    |
|-------------|------------------|-------|----|----|----|----|----|----|----|----|
|             |                  | P1    | P2 | P3 | P4 | P5 | P6 | P7 | P8 | P9 |
| 1892107-1   | D<br>C<br>B<br>A | TM    | TM | TM | TM | TM | TM | TM | TM | TM |
| 9P          |                  |       |    |    |    |    |    |    |    |    |

| PART NUMBER | ROWS             | POWER |    |
|-------------|------------------|-------|----|
|             |                  | P1    | P2 |
| 1892107-2   | D<br>C<br>B<br>A | TM    | TM |
| 2P          |                  |       |    |

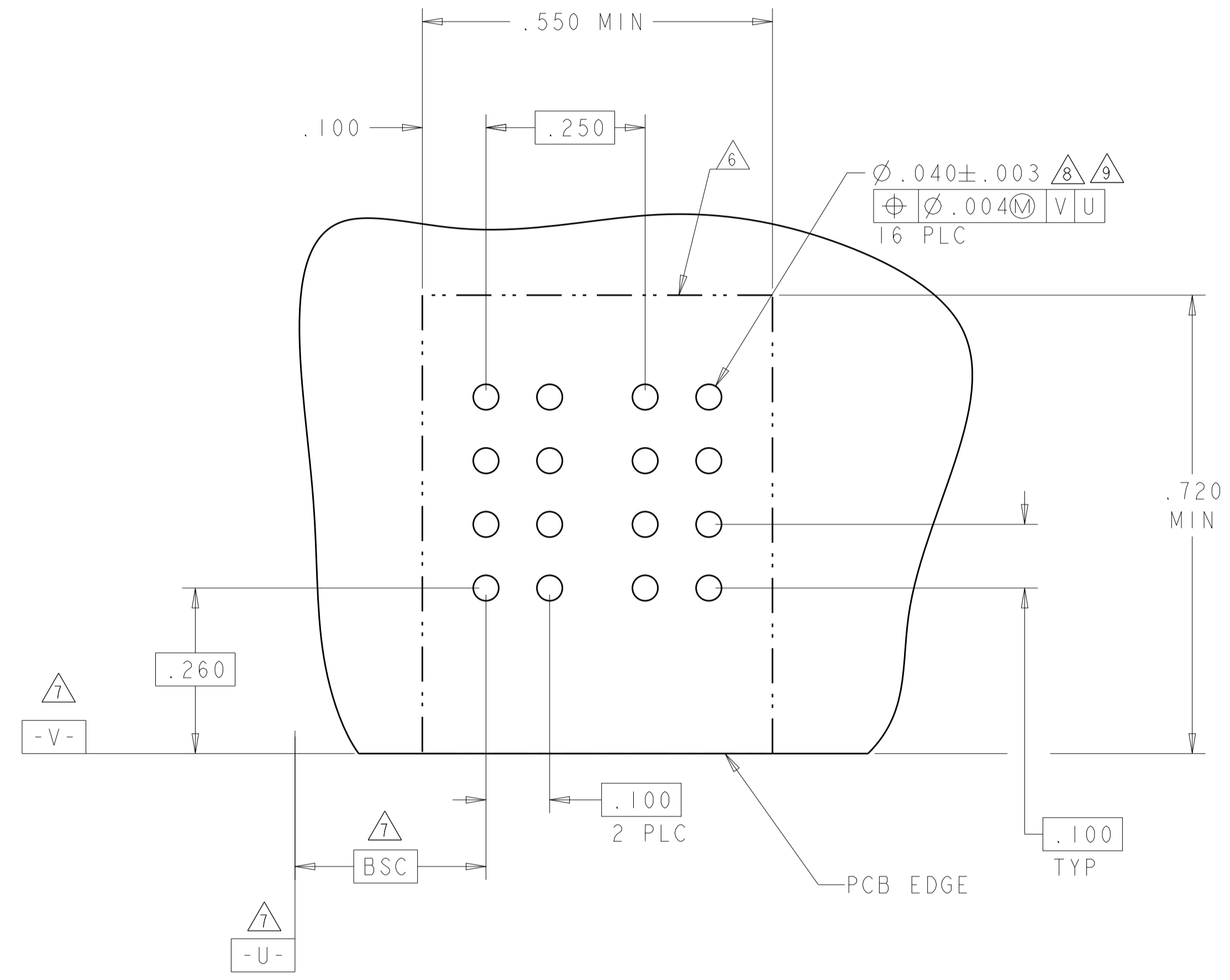


|      |   |
|------|---|
| PS   | DUAL BEAM POWER CONTACT, .135 SOLDER LENGTH |
| TM   | THREE BEAM POWER CONTACT .135 SOLDER LENGTH |
| CODE | DESCRIPTION                                 |

|  |   |                                       |                               |                 |
|--|---|---------------------------------------|-------------------------------|-----------------|
| THIS DRAWING IS A CONTROLLED DOCUMENT. |   | DWN<br>Denny Zhu<br>CHK<br>Sunny Zhao | 16JAN2007<br>16JAN2007        | TE Connectivity |
| DIMENSIONS:                            | TOLERANCES UNLESS OTHERWISE SPECIFIED:  | APVD<br>S. YAO                        | NAME                          |                 |
| INCHES                                 | 0 PLC ± .01<br>1 PLC ± .01<br>2 PLC ± .01<br>3 PLC ± .005<br>4 PLC ± .002<br>ANGLES ± .2° | PRODUCT SPEC                          | RIGHT ANGLE HEADER ASSEMBLY   |                 |
| MATERIAL                               | FINISH  | APPLICATION SPEC                      | W/O GUIDES                    |                 |
|  |   | 114-13038                             | MULTI-BEAM XLE                |                 |
|  |   | WEIGHT                                | SIZE                          |                 |
|  |   |                                       | A100779C=1892107              |                 |
|  |   | Customer Drawing                      | SCALE 4:1 SHEET 2 OF 3 REV A3 |                 |

| LOC | DIST | REVISIONS   |      |     |      |
|-----|------|-------------|------|-----|------|
| P   | LTN  | DESCRIPTION | DATE | DWN | APVD |
| -   | -    | SEE SHEET 1 | -    | -   | -    |
|     |      |             |      |     |      |
|     |      |             |      |     |      |

| PART NUMBER | ROWS             | POWER |    |
|-------------|------------------|-------|----|
|             |                  | P1    | P2 |
| 1892107-3   | D<br>C<br>B<br>A | PS    | PS |
| 2P          |                  |       |    |



|  |  |                             |   |
|--|--|-----------------------------|---|
| THIS DRAWING IS A CONTROLLED DOCUMENT.   |  | DWN: Denny Zhu 16JAN2007    | TE Connectivity   |
| DIMENSIONS: INCHES   |  | CHK: Sunny Zhao 16JAN2007   |   |
| TOLERANCES UNLESS OTHERWISE SPECIFIED:<br>0 PLC ±.<br>1 PLC ±.<br>2 PLC ±.01<br>3 PLC ±.005<br>4 PLC ±.0020<br>ANGLES ±.2° |  | APVD: S. YAO                | NAME: RIGHT ANGLE HEADER ASSEMBLY W/O GUIDES MULTI-BEAM XLE |
| MATERIAL: -  |  | PRODUCT SPEC: 108-1973      | SIZE: A1  |
| FINISH: -  |  | APPLICATION SPEC: 114-13038 | CAGE CODE: 100779   |
| Customer Drawing   |  | WEIGHT: -                   | DRAWING NO: 1892107   |
| SCALE: 4:1   |  | SHEET 3 OF 3                |   |
| REV: A3  |  | REV: A3                     |   |