



# IGPS-1080-24V

Industrial 8-port unmanaged Gigabit PoE Ethernet switch with 8x10/ 100/ 1000Base-T(X) P.S.E., 24VDC power inputs

## Features

- IGPS-1080-24V provide 8x10/100/1000Base-T(X) PoE (P.S.E.) ports
- Supports IEEE 802.3at compliant PoE and total power budget is 120Watts with maximum 30Watts per port
- Supports jumbo frame up to 9KBytes
- Support dual wide range 24~36VDC power inputs for power redundancy
- Support auto-negotiation and auto-MDI/MDI-X
- Support store and forward transmission
- Support flow control
- Rigid IP-30 housing design
- DIN-Rail and wall mounting enabled

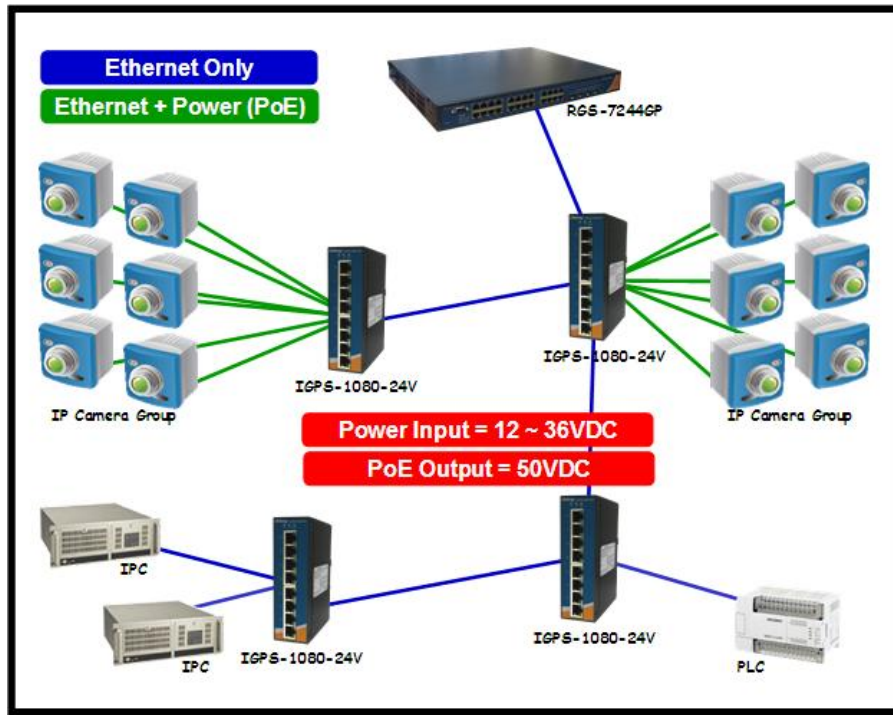


## Introduction

IGPS-1080-24V is an unmanaged Gigabit PoE Ethernet switch with P.S.E. function. IGPS-1080-24V supports Power over Ethernet, a system to transmit electrical power, along with data, to remote devices over standard twisted-pair cable in an Ethernet network. IGPS-1080-24V supports wide range 24~36VDC power inputs and generates 50VDC P.S.E. power output per port. IGPS-1080-24V PoE switch has 8X10/100/1000Base-T(X) P.S.E. (Power Sourcing Equipment) ports. P.S.E. is a device (switch or hub for instance) that will provide power in a PoE setup. The wide operating temperature range from -40°C to 70°C can satisfy most of operating environment. Therefore, the switch is one of the most reliable choices for PoE Ethernet application.

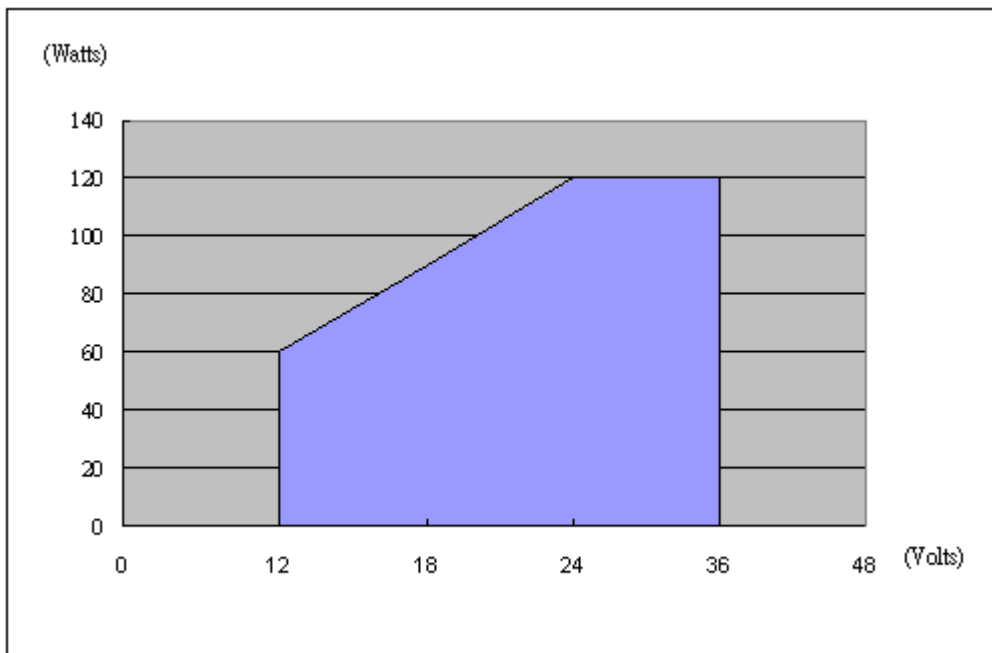
## Practical Operation

IGPS-1080-24V can be used in connecting several PoE P.D. Ethernet devices like IP-Camera or other Ethernet devices. In addition, there are two different power inputs at terminal block to avoid interruption caused by power down. When the primary DC power input fails, the backup power input will take over immediately to guarantee a non-stop operation.

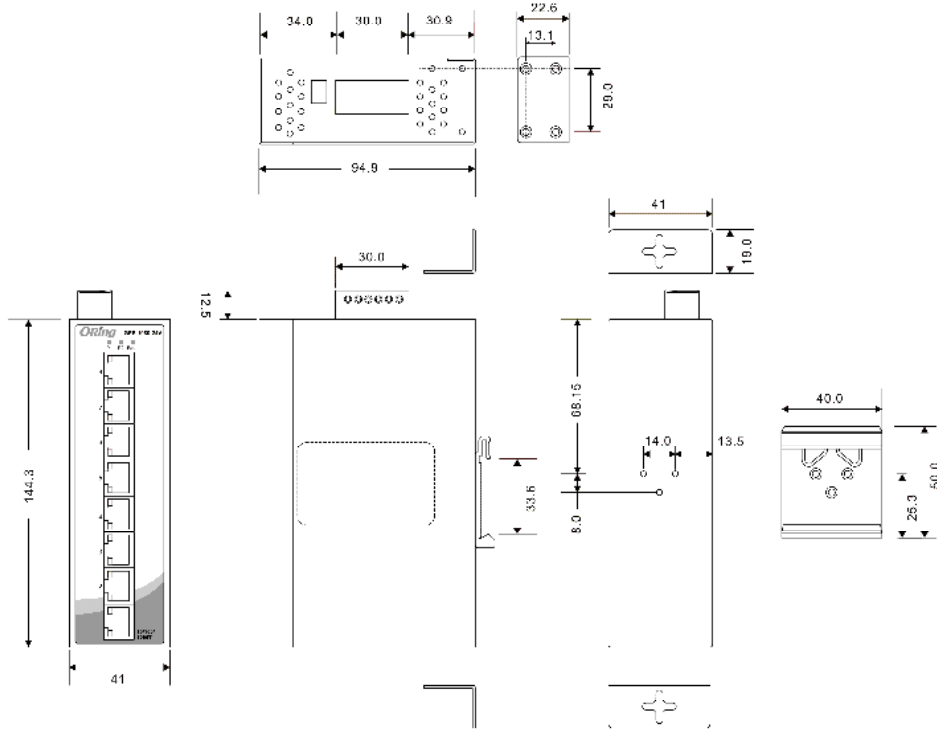


Connections of Ethernet devices

## Diagram of PoE Output



## Dimension



Unit = mm

## PoE Pin Definition

- 10/100Base-T(X) P.S.E. RJ-45 port

RJ-45 Pin Definition	
Pin No.	Description
# 1	TD+ with PoE Power input +
# 2	TD- with PoE Power input +
# 3	RD+ with PoE Power input -
# 6	RD- with PoE Power input -

- 1000Base-T P.S.E. RJ-45 port

RJ-45 Pin Definition	
Pin No.	Description
# 1	BI_DA+ with PoE Power input +
# 2	BI_DA- with PoE Power input +
# 3	BI_DB+ with PoE Power input -
# 4	BI_DC+
# 5	BI_DC-

# 6	BI_DB- with PoE Power input -
# 7	BI_DD+
# 8	BI_DD-

## Specifications

ORing Switch Model	IGPS-1080-24V
<b>Physical Ports</b>	
10/100/1000Base-T(X) Ports in RJ45 With P.S.E.	8
<b>Technology</b>	
Ethernet Standards	IEEE 802.3 for 10Base-T IEEE 802.3u for 100Base-TX IEEE 802.3ab for 1000Base-T IEEE 802.3x for Flow control IEEE 802.3at compliant PoE specification (up to 30 Watts per port for P.S.E.)
MAC Table	8K MAC addresses
Processing	Store-and-Forward
Jumbo Frame	Up to 9KBytes
<b>LED indicators</b>	
Power indicator	Green : Power LED x 2
Fault indicator	Amber : Indicate PWR1 or PWR2 failure
10/100/1000Base-T(X) RJ45 port indicator and PoE indicator	Green for port Link/Act. Green for PoE power injected.
<b>DIP-Switch</b>	
DIP-Switch 1	Power-1 failed warning : (ON) enable, (OFF) disable
DIP-Switch 2	Power-2 failed warning : (ON) enable, (OFF) disable
<b>Fault contact</b>	
Relay	Relay output to carry capacity of 1A at 24VDC
<b>Power</b>	
Redundant Input power	Dual DC inputs. 24~36VDC on 6-pin terminal block.
PoE output power	52 ~ 57VDC
Power consumption (Typ.)	7.8 Watts
Overload current protection	Present
Reverse polarity protection	NOT Present
<b>Physical Characteristic</b>	
Enclosure	IP-30
Dimension (W x D x H)	41 (W) x 94.9 (D) x 144.3(H) mm
Weight (g)	452 g
<b>Environmental</b>	
Storage Temperature	-40 to 85°C (-40 to 185°F)
Operating Temperature	-40 to 70°C (-40 to 158°F)
Operating Humidity	5% to 95% Non-condensing
<b>Regulatory approvals</b>	
EMI	FCC Part 15, CISPR (EN55022) class A, E-MARK
EMS	EN61000-4-2 (ESD), EN61000-4-3 (RS), EN61000-4-4 (EFT), EN61000-4-5 (Surge), EN61000-4-6 (CS), EN61000-4-8, EN61000-4-11

Shock	IEC60068-2-27
Free Fall	IEC60068-2-32
Vibration	IEC60068-2-6
MTBF (Hours) (MIL-HDBK-217F2, GB, GC, 25°C)	123,291
Warranty	5 years

## Ordering Information

IGPS-1 **AAB**-24V

Code Definition	10/100/1000Base-T(X) P.S.E. Port Number	Additional Port Number
Option	- 08: 8 ports	- 0: 0 port

Available Model	Model Name	Description
	<b>IGPS-1080-24V</b>	Industrial 8-port unmanaged Gigabit PoE Ethernet switch with 8x10/100/1000Base-T(X) P.S.E., 24VDC power inputs

## Packing List

- IGPS-1080-24V x 1
- Din-Rail Kit x 1
- Wall-Mount Kit x 1
- Quick Installation Guide x 1

## Optional Accessories

- DR-45-12/24 : 45 Watts@12/24VDC DIN-Rail power supply
- DR-75-12/24 : 75 Watts@12/24VDC DIN-Rail power supply
- DR-120-12/24 : 120 Watts@12/24VDC DIN-Rail power supply