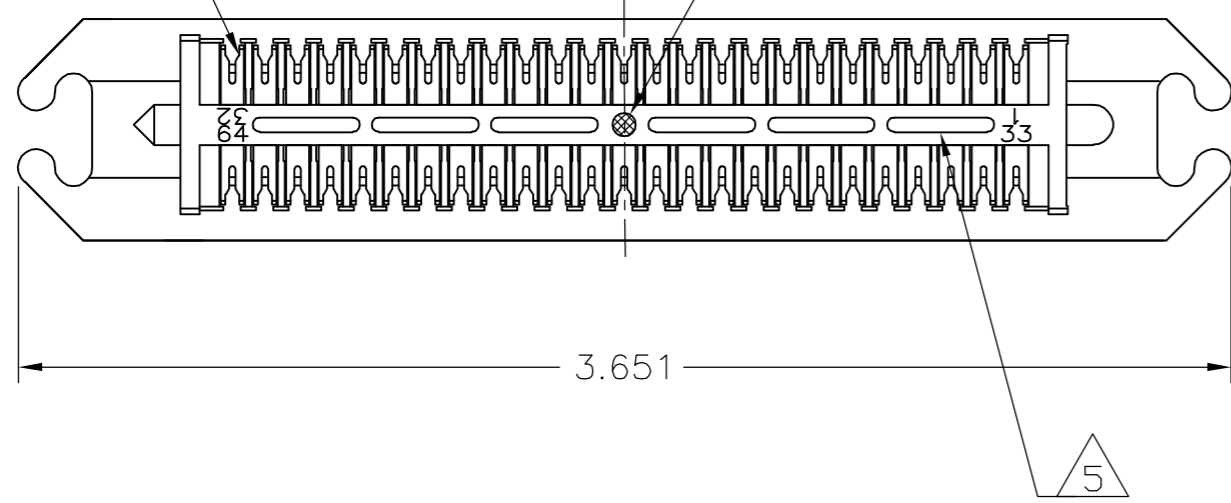


THIS DRAWING IS UNPUBLISHED. RELEASED FOR PUBLICATION
 © COPYRIGHT BY TYCO ELECTRONICS CORPORATION. ALL RIGHTS RESERVED.

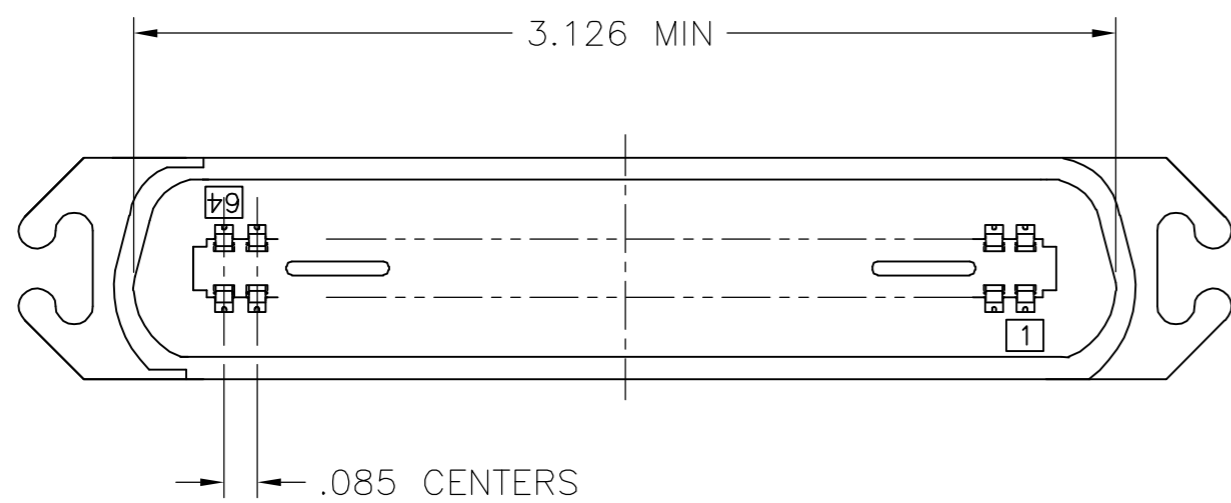
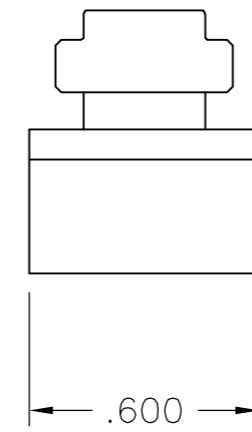
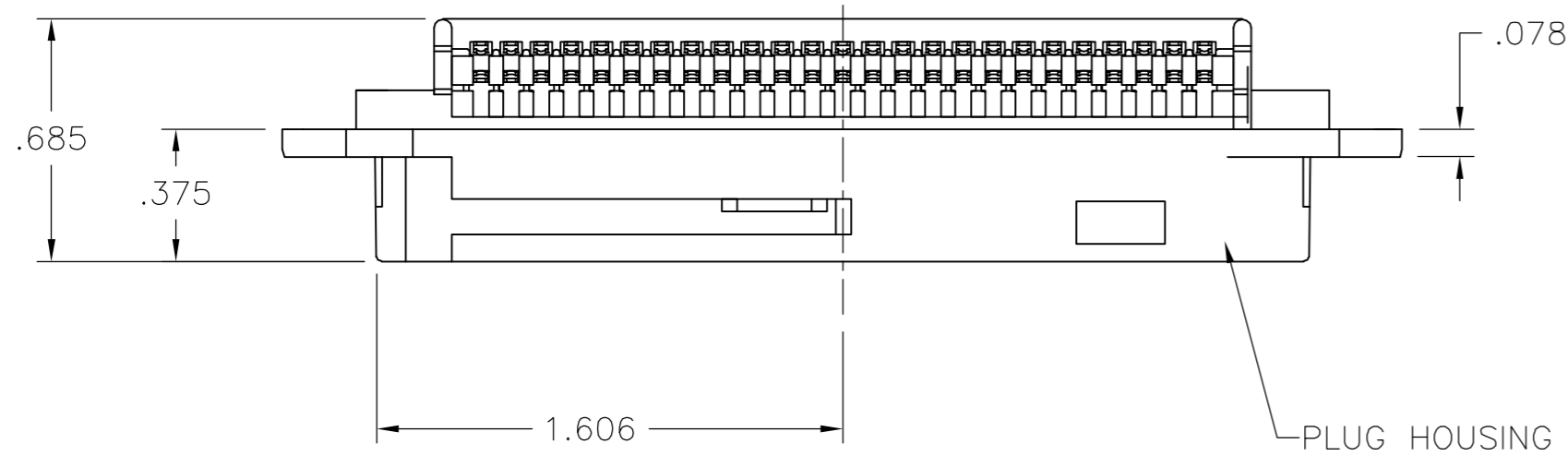
LOC	DIST	REVISIONS					
GP	00	P	LTR	DESCRIPTION	DATE	DWN	APVD
		A		RELEASED	17APR07	BM	WM

TERMINAL
64 REQUIRED

YELLOW COLOR DOT
LOCATED IN CENTER



1. THE CONTACT SURFACES OF THE TERMINALS ARE COATED WITH LUBRICANT.
 2. ALL DIMENSIONS SHOWN ARE FOR REFERENCE ONLY UNLESS OTHERWISE SPECIFIED.
 - 3 MATERIAL:
HOUSING: THERMOPLASTIC, COLOR: BLACK
TERMINALS: HIGH STRENGTH COPPER ALLOY PLATED WITH .000030 MIN GOLD OR GOLD FLASH OVER .000030 MIN PALLADIUM NICKEL ON CONTACT MATING SURFACE
.000050 MIN NICKEL UNDERPLATE OVER ENTIRE TERMINAL.
 4. WIRE SIZE: 26, 27 & 28 AWG, 7 STRANDS OF COPPER CONDUCTORS. MAXIMUM INSULATION DIAMETER OF .045 IS ACCEPTABLE FOR MOST APPLICATIONS.
- 5 CORING MAY OR MAY NOT APPEAR AND IS AT THE DISCRETION OF TYCO.



1888845

1888845-1
PART
NUMBER

THIS DRAWING IS A CONTROLLED DOCUMENT.		DWN	22DEC06	 Tyco Electronics Corporation Harrisburg, PA 17105-3608	NAME			
DIMENSIONS: INCHES		CHK	22DEC06		ASSEMBLY, PLUG, 64 POSITION, E SLOT (CHAMP-LOK, BAIL LOCK)			
TOLERANCES UNLESS OTHERWISE SPECIFIED:		APVD	22DEC06		SIZE	CAGE CODE	DRAWING NO	RESTRICTED TO
0 PLC ± -		PRODUCT SPEC			A2	00779	C=1888845	-
1 PLC ± -		APPLICATION SPEC		SCALE	SHEET	REV		
2 PLC ± -		WEIGHT	-	2:1	1 of 1	A		
3 PLC ± -		CUSTOMER DRAWING						
4 PLC ± -								
ANGLES ± -								
FINISH								
MATERIAL								
INCHES								
MILLIMETERS								