

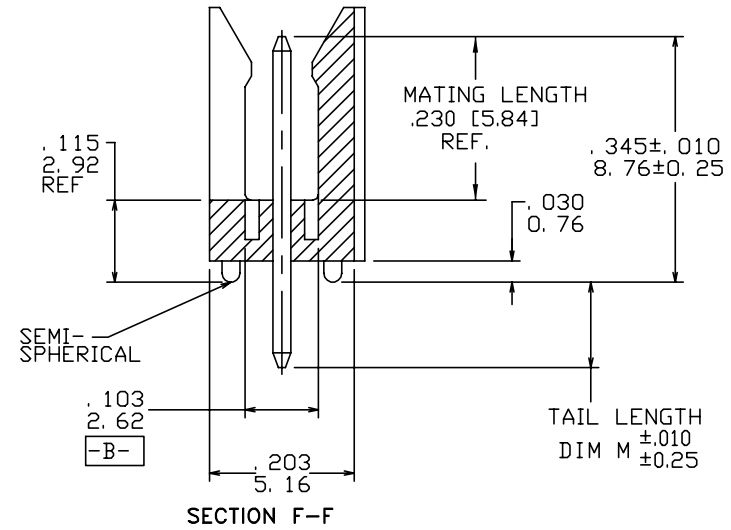
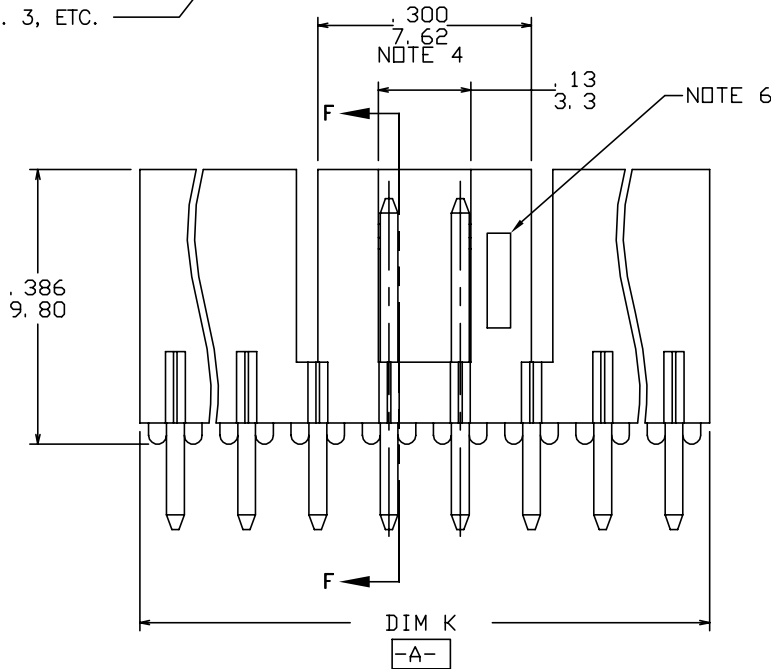
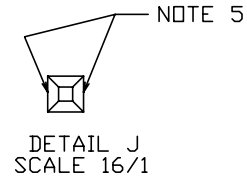
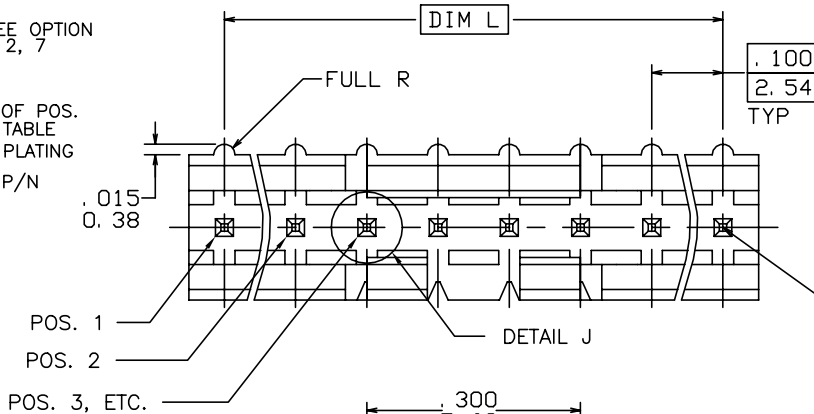
PRODUCT NUMBER
10126113-XYHLF

LEAD FREE OPTION
NOTE 1, 2, 7

NO. OF POS.
SEE TABLE

PIN PLATING

BASE P/N



| | | | | | | | | | |
|-------------------|-----------|---------------------------------------|----------|----------------------------------|--------|-----------------|--|---|--|
| mat'l. code | | surface ISO 1302 ✓ | | tolerance ISO 406 ISO 1101 | | projection ⊕ | | product family HEADER | |
| ltr ecn nqdr date | | tolerances unless otherwise specified | | title | | INCH/MM | | FRICION LATCH HEADER SINGLE ROW VERTICAL | |
| A | NEW | ZK | 06/14/13 | angles | linear | scale 4:1 | | dwg no 10126113 sheet 1 of 2 size A3 | |
| | | | | 0°±2' | | | | type Product Customer Drawing | |
| dr | ZK HU | | 06/14/13 | | | | | | |
| enr | ZK HU | | 06/14/13 | | | | | | |
| chr | RICK BIAN | | 06/14/13 | | | | | | |
| appd | RICK BIAN | | 06/14/13 | | | | | | |
| sheet index | revision | A | A | | | | | | |
| | sheet | 1 | 2 | | | | | | |

| PRODUCT NUMBER | NO OF PDS | DIM K | DIM L | TAIL LENGTH DIM M |
|----------------|-----------|-------------|-------------|-------------------|
| 10126113-X03 | 1 X 3 | .300/7.62 | .200/5.08 | .120/3.05 |
| 10126113-X04 | 1 X 4 | .400/10.16 | .300/7.62 | .120/3.05 |
| 10126113-X05 | 1 X 5 | .500/12.70 | .400/10.16 | .120/3.05 |
| 10126113-X06 | 1 X 6 | .600/15.24 | .500/12.70 | .120/3.05 |
| 10126113-X07 | 1 X 7 | .700/17.78 | .600/15.24 | .120/3.05 |
| 10126113-X08 | 1 X 8 | .800/20.32 | .700/17.78 | .120/3.05 |
| 10126113-X09 | 1 X 9 | .900/22.86 | .800/20.32 | .120/3.05 |
| 10126113-X10 | 1 X 10 | 1.000/25.40 | .900/22.86 | .120/3.05 |
| 10126113-X11 | 1 X 11 | 1.100/27.94 | 1.000/25.40 | .120/3.05 |
| 10126113-X12 | 1 X 12 | 1.200/30.48 | 1.100/27.94 | .120/3.05 |
| 10126113-X13 | 1 X 13 | 1.300/33.02 | 1.200/30.48 | .120/3.05 |
| 10126113-X14 | 1 X 14 | 1.400/35.56 | 1.300/33.02 | .120/3.05 |
| 10126113-X15 | 1 X 15 | 1.500/38.10 | 1.400/35.56 | .120/3.05 |
| 10126113-X43 | 1 X 3 | .300/7.62 | .200/5.08 | .190/4.83 |

| PIN PLATING CODES | |
|-------------------|---|
| XXXX-1YY | 30u"/0.76u Au MIN. OVER 50u"/1.27u MIN Ni |
| XXXX-2YY | 15u"/0.38u Au MIN. OVER 50u"/1.27u MIN Ni |

NOTES:

- PART NUMBER OPTIONS:
PIN PLATING CODES (SEE ABOVE)
LEAD FREE:
ADD 'HLF' AT THE END OF PART NUMBER FOR LEAD FREE
- BODY MATERIAL:
GLASS REINFORCED PCT COLOR: BLACK
FLAME RETARDANT PER UL 94 V-0
MAXIMUM OPERATING TEMPERATURE: 130° C
OR
MINERAL FILLED LCP, COLOR BLACK
FLAME RETARDANT PER UL 94 V-0

PART NUMBERS WITH 'H' SUFFIX WILL WITHSTAND EXPOSURE TO 260°C PEAK TEMPERATURE FOR 20 SECONDS IN WAVE SOLDER, INFRA-RED OR VAPOR PHASE SOLDER PROCESS.
PART NUMBERS WITHOUT 'H' SUFFIX WILL WITHSTAND EXPOSURE TO 260°C PEAK TEMPERATURE FOR WAVE SOLDER PROCESS.
- PIN MATERIAL: 3/4 HARD PHOS-BRONZE.
- NO SLOTS ON 1 X 5 POSITION OR SMALLER PRODUCT. THE CENTER KEY SLOT WILL BE ON ALL HEADERS REGARDLESS OF SIZE.
- TWO NON-CRITICAL SIDES OF PIN TIP NOT PLATED, BOTH ENDS
- COMPANY LOGO MAY APPEAR IN THIS AREA.
- THESE PRODUCTS MEET EUROPEAN UNION DIRECTIVES AND OTHER COUNTRY REGULATION AS DESCRIBED IN GS-22-008.

| | | | | | |
|-------------|----------------|-----------------------|----------------------------------|--|---|
| mat'l. code | | surface ISO 1302 ✓ | tolerance ISO 406 ISO 1101 | projection | product family HEADER |
| ltr | ecnr | ndr | date | tolerances unless otherwise specified | title |
| A | | | | angles linear 0°±2' | FRICION LATCH HEADER SINGLE ROW VERTICAL |
| | | | | linear XXX±.01/XXX.3 XXX±.005/XXX±0.13 XXX±.0020/XXX±0.05 | INCH/MM scale 4:1 |
| | | | | dr ZK HU 06/14/13 | FCJ dwg no 10126113 |
| | | | | enr ZK HU 06/14/13 | sheet 2 of 2 size A3 |
| | | | | chr RICK BIAN 06/14/13 | |
| | | | | app RICK BIAN 06/14/13 | type Product Customer Drawing |
| sheet index | revision sheet | | | | |



FCIconnect.com

Copyright FCI