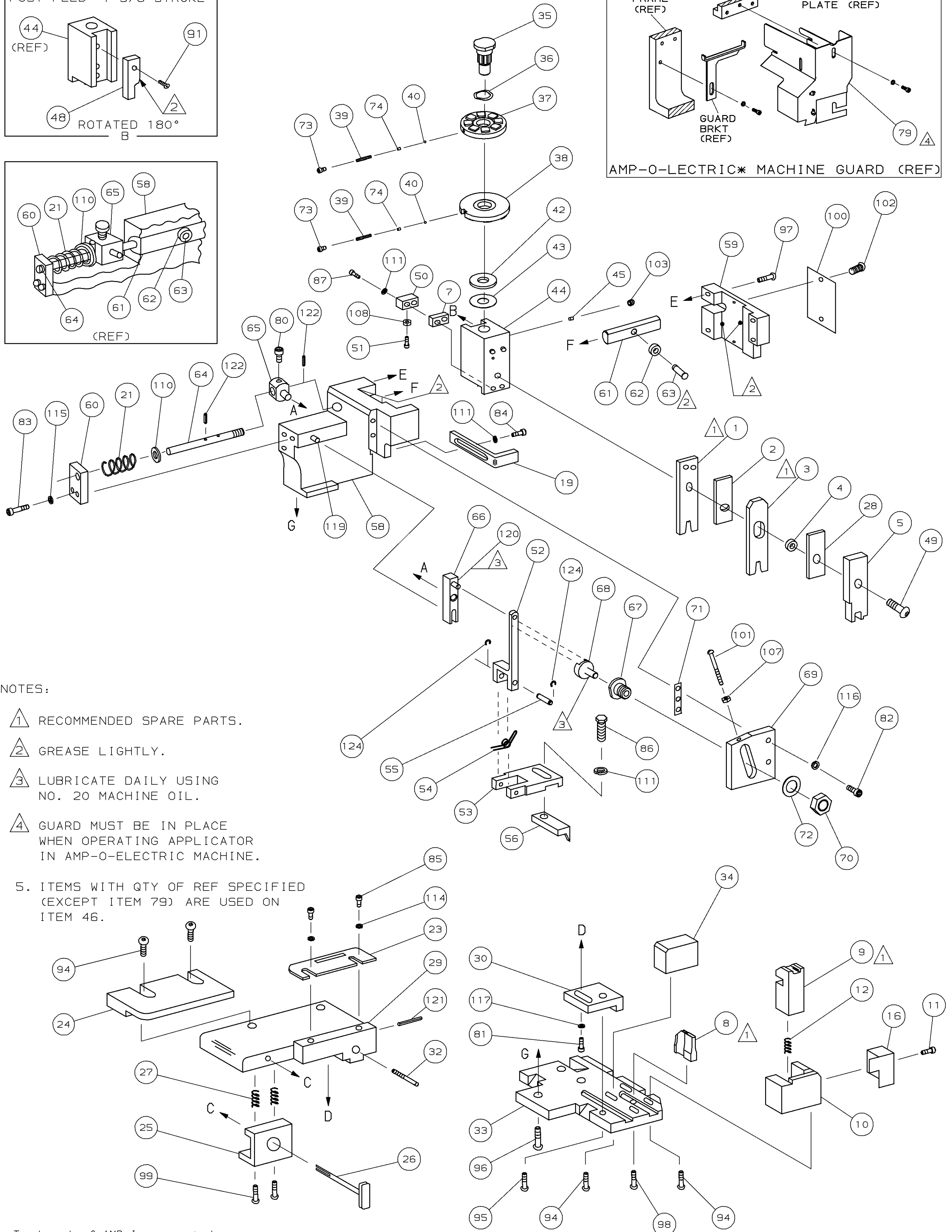
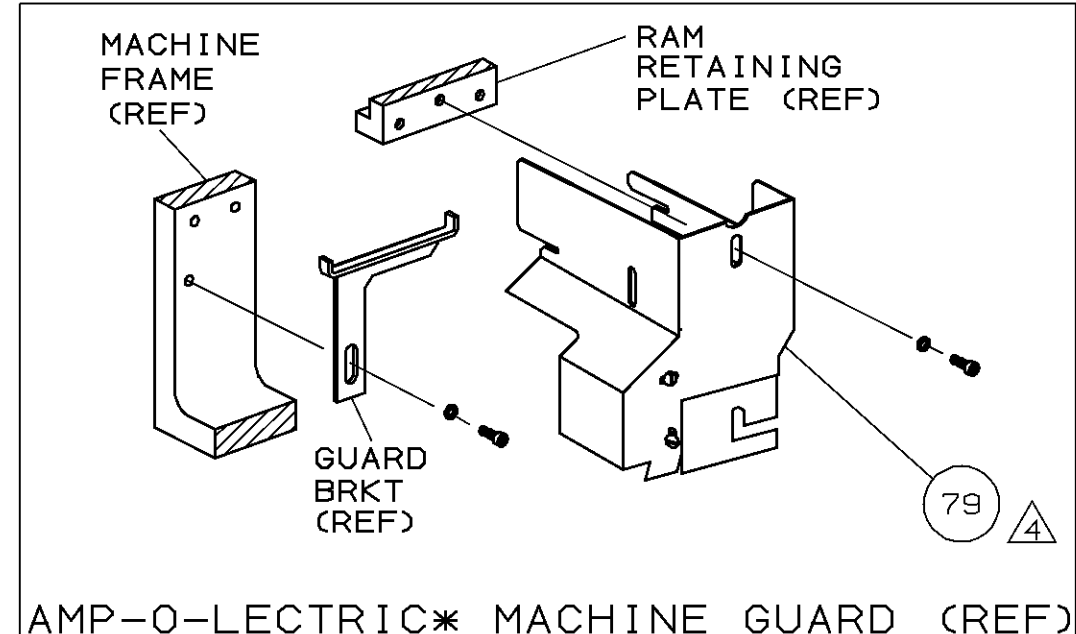
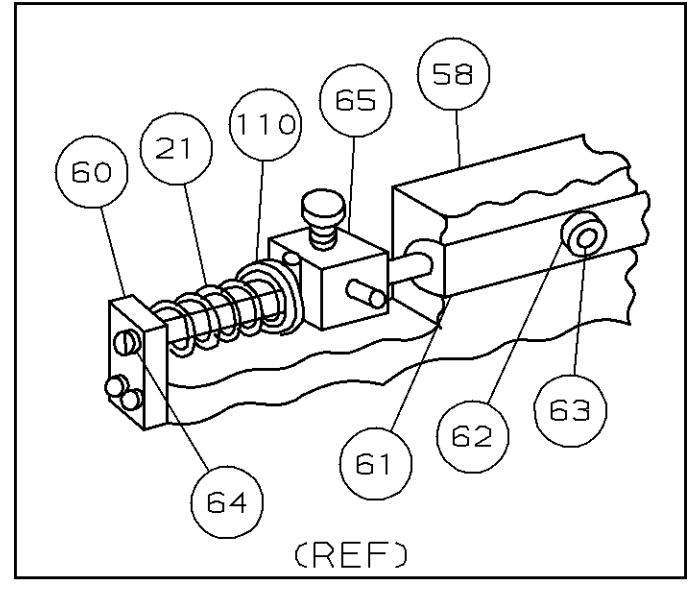
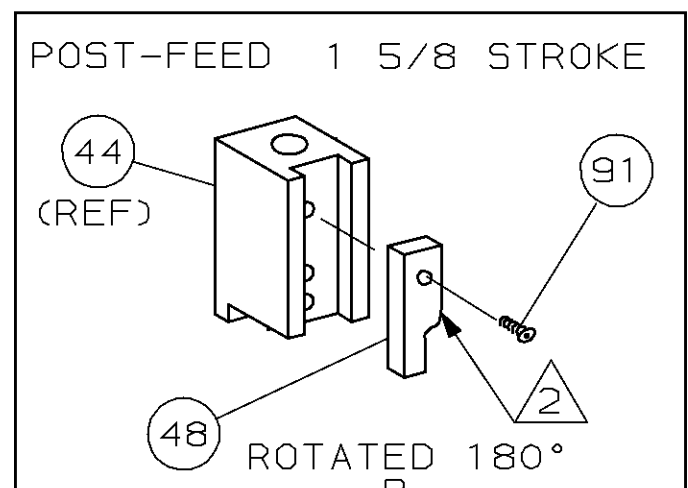


THIS DRAWING IS A CONTROLLED DOCUMENT.



- NOTES:
- 1 RECOMMENDED SPARE PARTS.
  - 2 GREASE LIGHTLY.
  - 3 LUBRICATE DAILY USING NO. 20 MACHINE OIL.
  - 4 GUARD MUST BE IN PLACE WHEN OPERATING APPLICATOR IN AMP-O-ELECTRIC MACHINE.
  - 5. ITEMS WITH QTY OF REF SPECIFIED (EXCEPT ITEM 79) ARE USED ON ITEM 46.

JULY 8, 1988  
 THIS DRAWING IS UNPUBLISHED.  
 RELEASED FOR PUBLICATION  
 BY AMP INCORPORATED. ALL RIGHTS RESERVED.  
 © COPYRIGHT 1988

AMP 1756 REV 3-92 25-AUG-98 12:58:00 amp29062

REF	DESCRIPTION	QTY	REF	DESCRIPTION	QTY	
21045-3	RING, RET "C" (.187ø) FEED FINGER PIN	124	454220-1	CAP, HOUSING	59	
5-21028-1	PIN, SLT SPR (.125øx.50) ADJ ROD	123	454485-1	HOUSING	58	
4-21028-0	PIN, SLT SPR (.093øx.75) ST GUIDE PL	122			57	
1-21030-1	PIN, DOWEL (.187øx.50) LEVER	121	690542-2	PAWL, FEED	56	
1-21030-6	PIN, DOWEL (.187øx1.25) HOUSING	120	240624-1	PIN, FEED FINGER	55	
		119	691499-1	SPRING, FEED FINGER	54	
21024-5	WASHER, LOCK (NO. 10) ADJ BLOCK	118	690541-1	FINGER, FEED	53	
21024-5	WASHER, LOCK (NO. 10) ADJ PLATE	117	455679-1	LEVER, TERMINAL FEED ARM	52	
21024-5	WASHER, LOCK (NO. 10) FEED GUIDE ROD	116	811242-2	BUMPER, HOLDDOWN	51	
21024-2	WASHER, LOCK (NO. 4) FRONT STRIP GUIDE	115	690753-1	SPACER, TONKER	50	
		114	7-21002-9	BOLT, CRIMPER (5/16-24x1.00)	49	
		113	690501-4	CAM, POST-FEED 1 5/8 STROKE	48	
		112			47	
21024-4	WASHER, LOCK (NO. 8) STRIPPER	111	459456-1	APPLICATOR, BASIC (SUBASSY)	46	
21899-4	WASHER, FLAT (5/16 DIA) SCREW ADJ	110	690191-1	PLUG, NYLON	45	
		109	455673-1	RAM	44	
21018-5	NUT, HEX (NO. 6) HOLDDOWN	108	690125-1	WASHER, LAMINATED	43	
21018-5	NUT, HEX (6-32) FEED ADJ	107	690124-1	WASHER, RAM	42	
		106			41	
		105	23241-6	BALL, STEEL	40	
		104	690170-1	SPRING, COMPRESSION	39	
21009-2	SCR, SKT SET (1/4-20x.25) LOC-WEL) RAM	103	690142-1	DISC, INSULATION	38	
21017-2	SCR, DRIVE (#2x.19) ID PLATE	102	692155-6	DISC, WIRE	37	
6-23715-5	SCR, PAN HD (6-32x1.50) FEED ADJ	101	22480-5	WASHER, SPRING	36	
461264-1	PLATE, IDENTIFICATION	100	690212-1	POST, RAM	35	
2-21002-9	SCR, BHC (10-32x.75) DRAG	99	690786-1	SUPPORT, TERMINAL	34	
22733-8	SCR, BHC (8-32x.38) LOC-WEL) ANVIL	98	455675-1	PLATE, BASE	33	
2-21002-9	SCR, BHC (10-32x.75) CAP	97	690432-3	SCREW, ADJUSTMENT	32	
2-22733-8	SCR, BHC (1/4-20x.62) HOUSING	96			31	
2-21002-7	SCR, BHC (10-32x.50) SG ADJ BLOCK	95	455689-1	BLOCK, STRIP GUIDE ADJ	30	
2-21002-2	SCR, BHC (8-32x.50) SHEAR	94	455671-1	PLATE, STRIP GUIDE	29	
		93	455888-8	SPACER, FRONT SHEAR DEP	28	
		92	1-22284-0	SPRING, DRAG	27	
1-21002-7	SCR, BHC (6-32x.38) CAM	91	690546-1	LEVER, DRAG RELEASE	26	
		90	240792-1	DRAG, STOCK	25	
		89	6-690504-2	GUIDE, STRIP (REAR)	24	
		88	690438-1	GUIDE, STRIP (FRONT)	23	
		87			22	
2-21000-8	SCR, SKT CAP (8-32x.62) HOLD DOWN	86	4-22284-9	SPRING, FEED RETURN	21	
2-22603-0	SCR, HEX HEAD (8-32x.31) FEED FINGER	85			20	
1-21000-3	SCR, SKT CAP (4-40x.25) F STRIP GUIDE	84	690472-2	STRIPPER	19	
2-21000-7	SCR, SKT CAP (8-32x.50) STRIPPER	83			18	
3-21000-7	SCR, SKT CAP (10-32x.75) FEED ROD GD	82			17	
3-21000-6	SCR, SKT CAP (10-32x.62) FEED ADJ BLK	81	691667-1	GUARD, CHIP (FRONT)	16	
3-21000-4	SCR, SKT CAP (10-32x.38) SG ADJ BLK	80			15	
3-21000-4	SCR, SKT CAP (10-32x.38) PIVOT BLOCK	79			14	
455755-1	GUARD ASSY	78			13	
		77	5-22280-0	SPRING, SHEAR	12	
		76	690461-1	STOP, SHEAR	11	
		75	690459-1	HOLDER, SHEAR (FRONT)	10	
2	690603-1	SPRING, ASSIST	74	454276-1	SHEAR, FLOAT (FRONT)	9
2	23030-1	SCR, SKT CAP (6-32x.25) CP DISC	73	6-803653-8	ANVIL	8
REF	458109-1	WASHER, SPECIAL	72	6-240641-9	SPACER, HOLD-DOWN	7
REF	690517-1	SPACER	71			6
REF	22594-8	NUT, HEX	70	455889-9	DEPRESSOR, SHEAR (FRONT)	5
REF	240628-1	PLATE, ADJUSTMENT	69	238011-6	SPACER, TUBULAR	4
REF	240626-1	SHAFT, PIVOT	68	5-456135-3	CRIMPER, INSULATION	3
REF	240633-1	BUSHING	67	455888-3	SPACER, CRIMPER	2
REF	455680-1	LEVER, INTERMEDIATE	66	456405-4	CRIMPER, WIRE	1
REF	240629-1	BLOCK, PIVOT	65			
REF	240632-2	SCREW, ADJUSTMENT FEED ROD	64			
REF	240659-3	PIN, CAM ROLLER	63			
REF	240658-1	ROLLER, CAM	62			
REF	454398-2	ROD, FEED	61			
REF	454178-1	GUIDE, FEED ROD	60			

REMARKS		NO	REV
<b>INACTIVE</b>		TO APPLY TERMINAL	
APPL USED ON MACHINE PART NO	MACH SERIAL NO	DISTRIBUTION	
CUSTOMER NAME	APPL SERIAL NO	ORIGINAL	
ADDRESS	PURCHASE ORDER	CUSTOMER COPY	
CITY	ENG APP	FIELD ENG COPY	

CRIMPING DATA				APPLICATOR WILL APPLY	
PAD LTR	CRIMP HEIGHT	WIRE SIZE	WIRE STRIP LENGTH	927886	
A	.051	18			
B	.046	20			
C	NOT USED				
D	NOT USED				
CRIMP SIZE	TYPE	FEED	APPL INST		
WIRE .080	F	.500	AI 8040		
INSUL .110	0				
WIRE RANGE	INSULATION RANGE	MACHINE NO			
20-18	.055-.090	-			

AMPOMATOR POST-FEED

SET UP GAGE 10-1 458637-1 L1308  
 DR. 7/20/88 APP  
 G. EISEMAN

CHK REL LOC A D NO 567287-1 REV A1

NAME MINIATURE QUICK CHANGE APPLICATOR  
 SIDE FEED ( C1 II SOCKET 1 )

AMP INCORPORATED  
 Harrisburg, Pa.

00779 CUSTOMER AND ASSEMBLY DRAWING