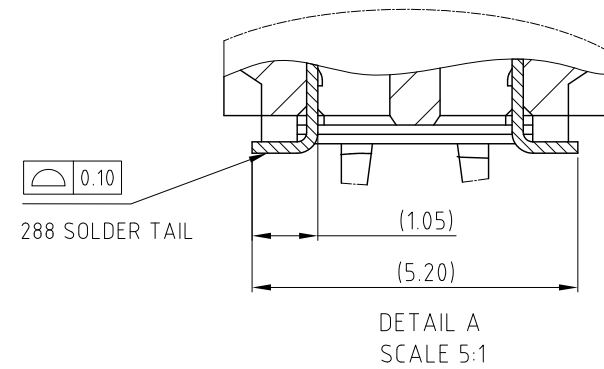
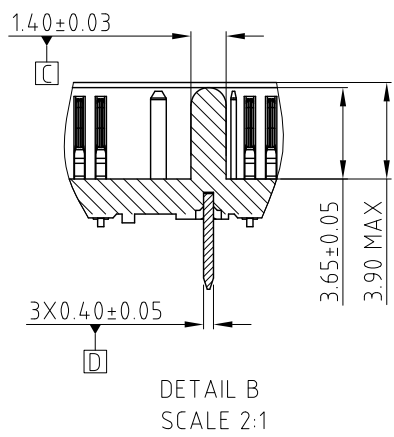
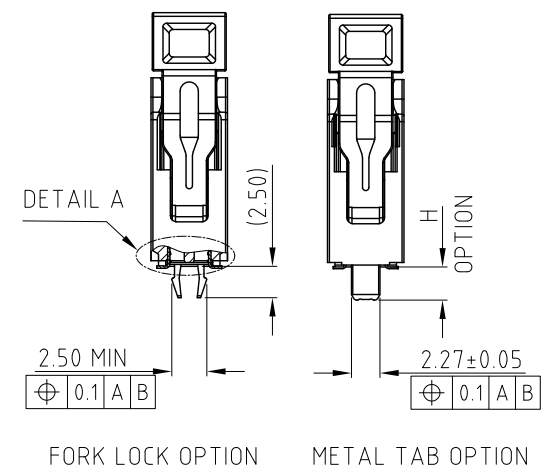
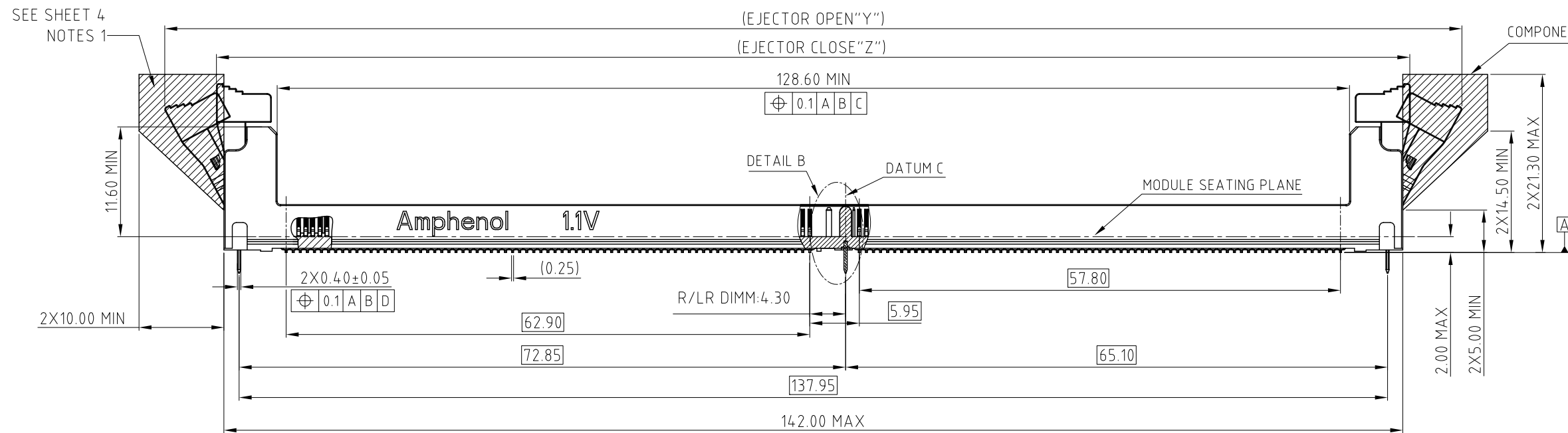
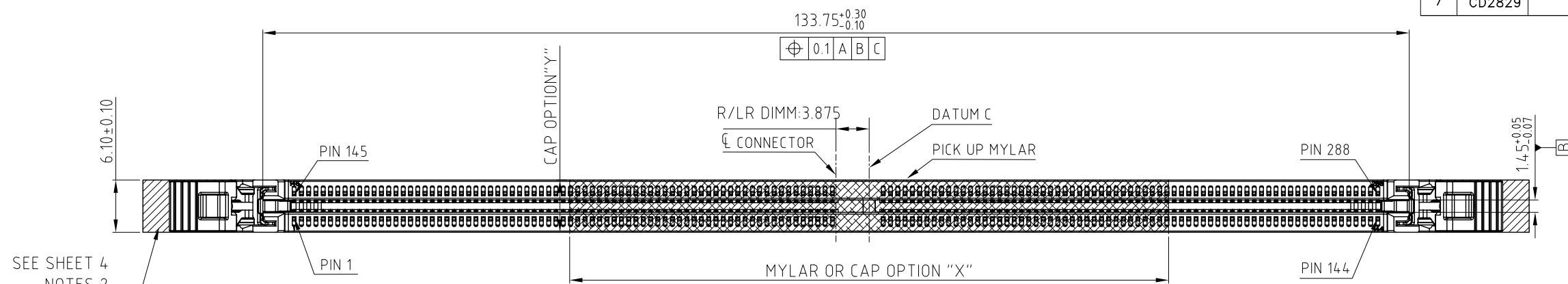


This document is the property of Amphenol Corporation and is delivered on the express condition that it is not to be disclosed, reproduced or used, in whole or in part, for manufacture or sale by anyone other than Amphenol Corporation without its prior consent, & that no right is granted to disclose or to use any information in this document.

CUSTOMER DRAWING

REVISIONS				
SYM	ECN	DESCRIPTION	DATE	APPROVED
6	CD2677	CHANGE THE TRAY DIMENSION 138.0 TO 137.0	Jun.04,2021	YH
7	CD2829	UPDATE THE PACKING TRAY	Aug.30,2021	YH



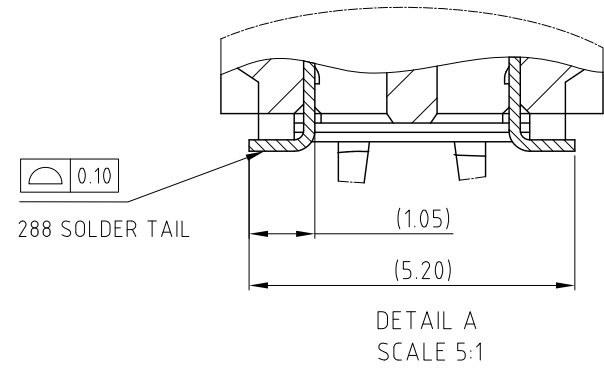
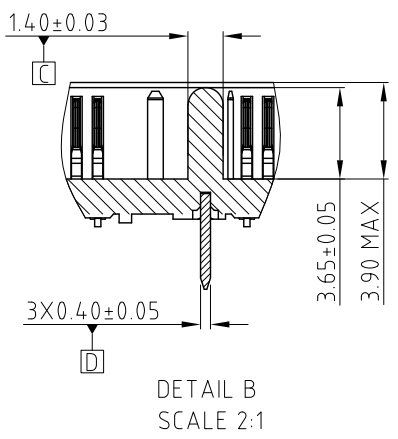
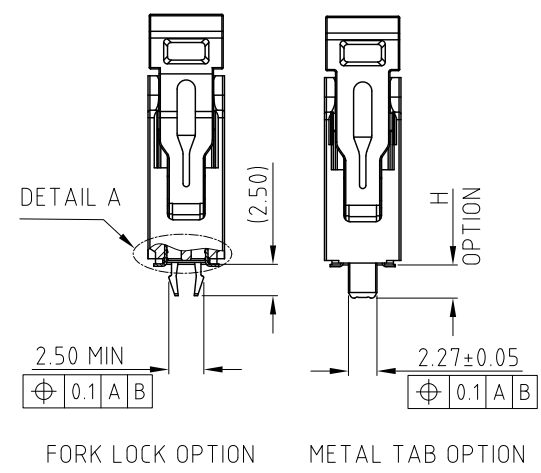
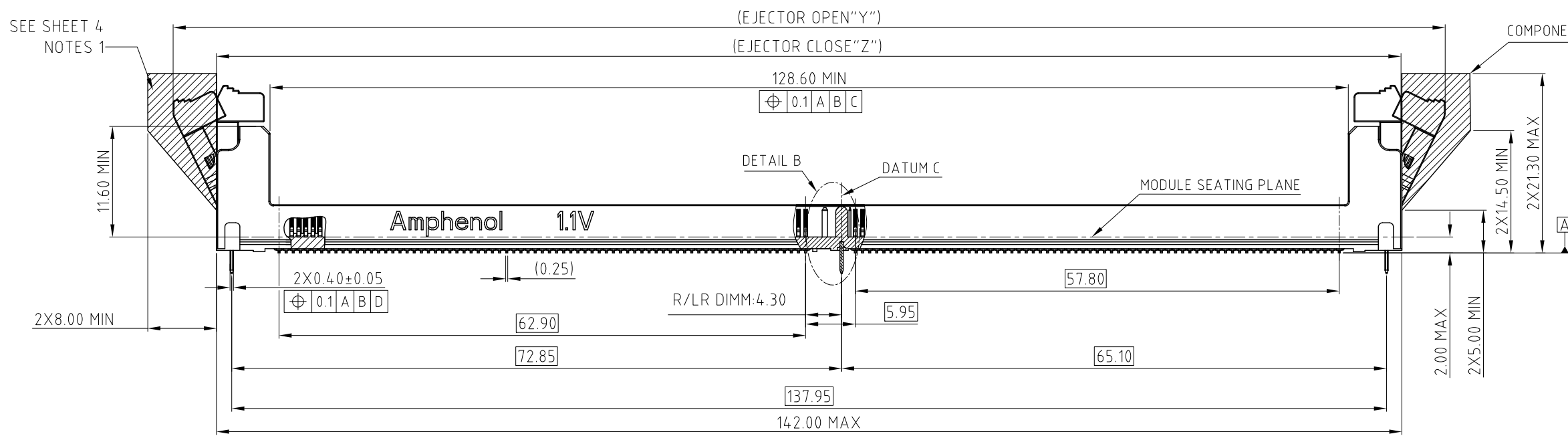
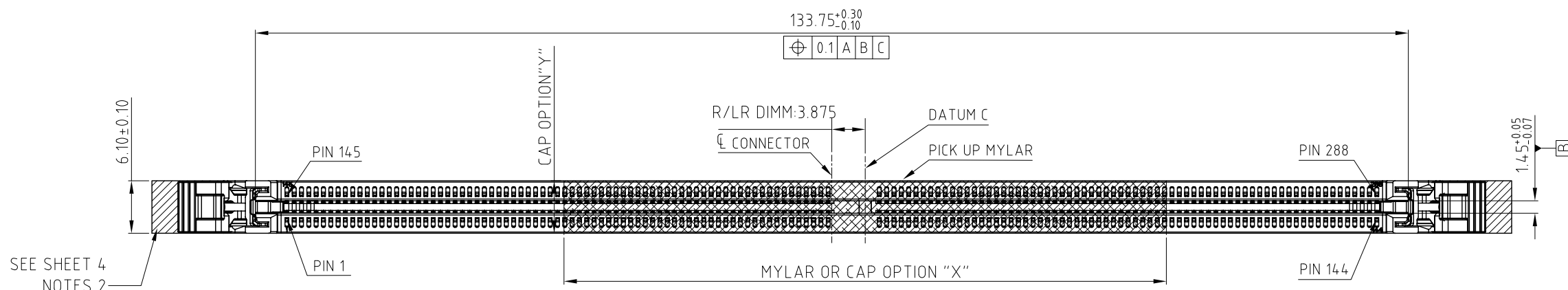
ITEM	EJECTOR OPEN DIMENSION "Y"	EJECTOR CLOSE DIMENSION "Z"	EJECTOR FIGURE
STANDARD LATCH	155.82	143.40	

UNLESS OTHERWISE SPECIFIED TOLERANCES		APPROVAL	DATE	Amphenol
.X	+/-	0.35	DRAWN Kellan.Yang Aug.30,2021	
.XX	+/-	0.25	CHECKED	
.XXX	+/-	0.15	CHECKED	TITLE
FOR MATERIALS AND FINISHES SEE NOTES				DRAWING FILE : DRAWING\DDR\DDR504XXXXXXQ
REMOVE SHARP EDGES				ANGLE OF PROJECTION
DIMENSIONS				
U.S.	INCHES			
(METRIC)	(MM)			SIZE DRAWING NO.
				A3 C DDR5-04-X-X-X-XXX-X-Q
				REV. 7
				SCALE NONE SHEET 1 OF 6

This document is the property of Amphenol Corporation and is delivered on the express condition that it is not to be disclosed, reproduced or used, in whole or in part, for manufacture or sale by anyone other than Amphenol Corporation without its prior consent, & that no right is granted to disclose or to use any information in this document.

CUSTOMER DRAWING

REVISIONS				
SYM	ECN	DESCRIPTION	DATE	APPROVED
		SEE SHEET 1		



ITEM	EJECTOR OPEN DIMENSION "Y"	EJECTOR CLOSE DIMENSION "Z"	EJECTOR FIGURE
SHORT LATCH	151.95	141.60	

UNLESS OTHERWISE SPECIFIED TOLERANCES		APPROVAL	DATE	Amphenol
.X	+/-	0.35		
.XX	+/-	0.25		
.XXX	+/-	0.15		
FRACTIONS	+/-	3°		
ANGLES	+/-			
FOR MATERIALS AND FINISHES SEE NOTES		DRAWN	Kellen.Yang	TITLE DDR5 288P R/LR DIMM CONNECTOR
REMOVE SHARP EDGES		CHECKED		
DIMENSIONS		DRAWING FILE : DRAWING\DDR\DDR504XXXXXXQ		SIZE
U.S.	INCHES	ANGLE OF PROJECTION		DRAWING NO.
(METRIC)	(MM)			A3 C
				SCALE
				NONE
				SHEET 2 OF 6
				REV. 7

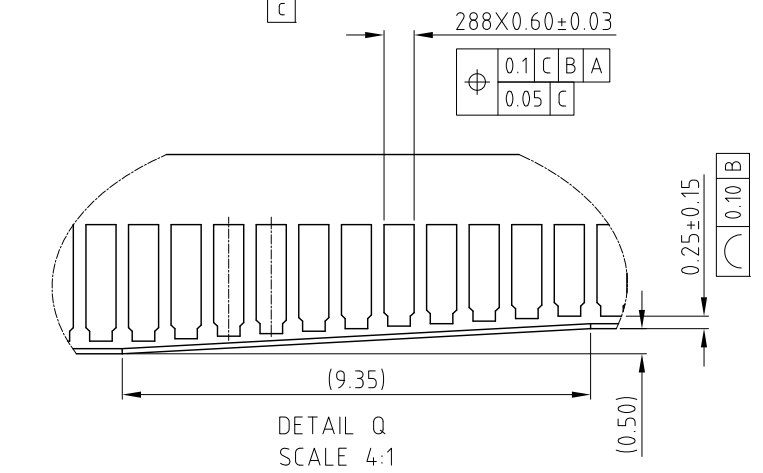
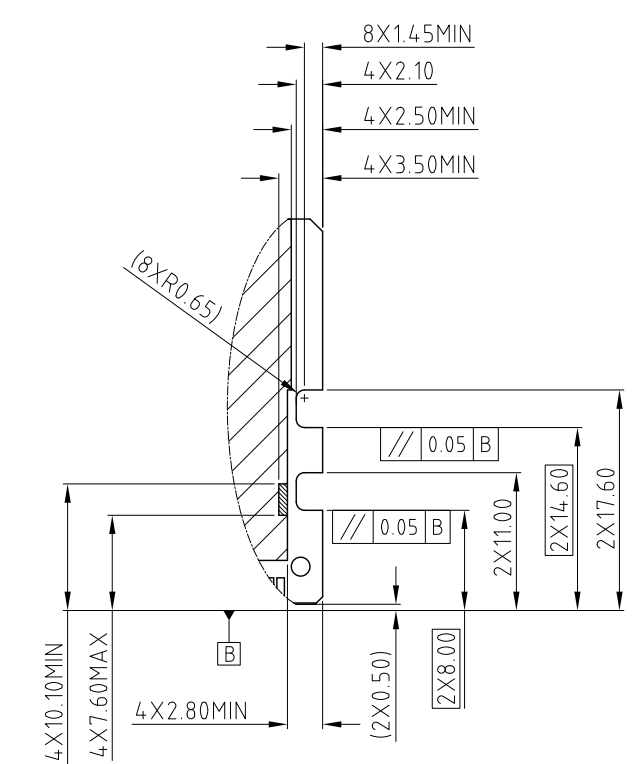
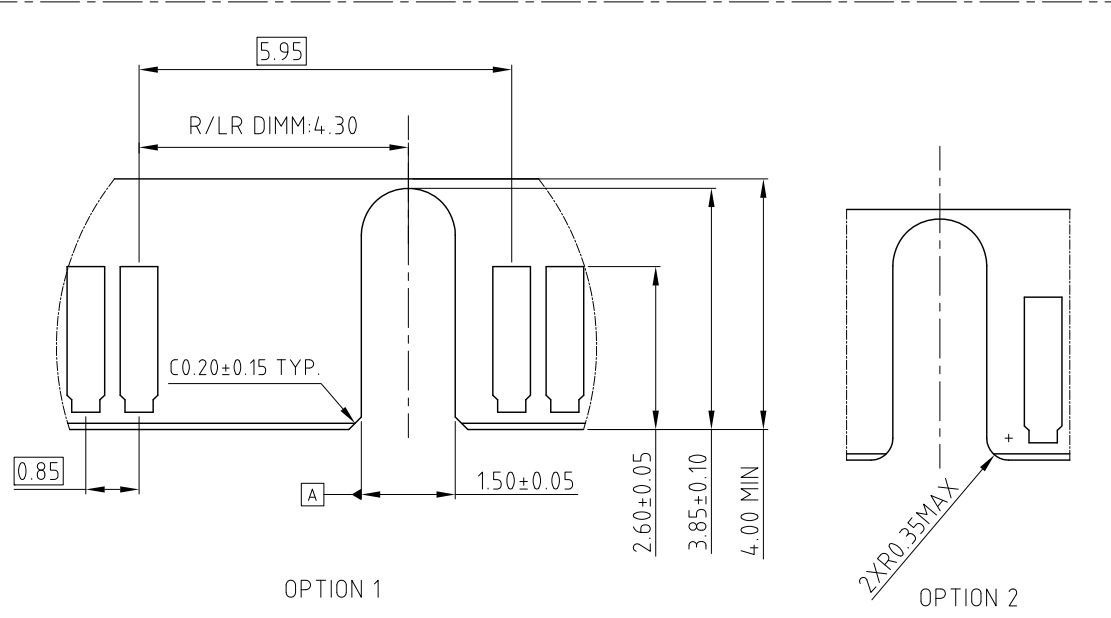
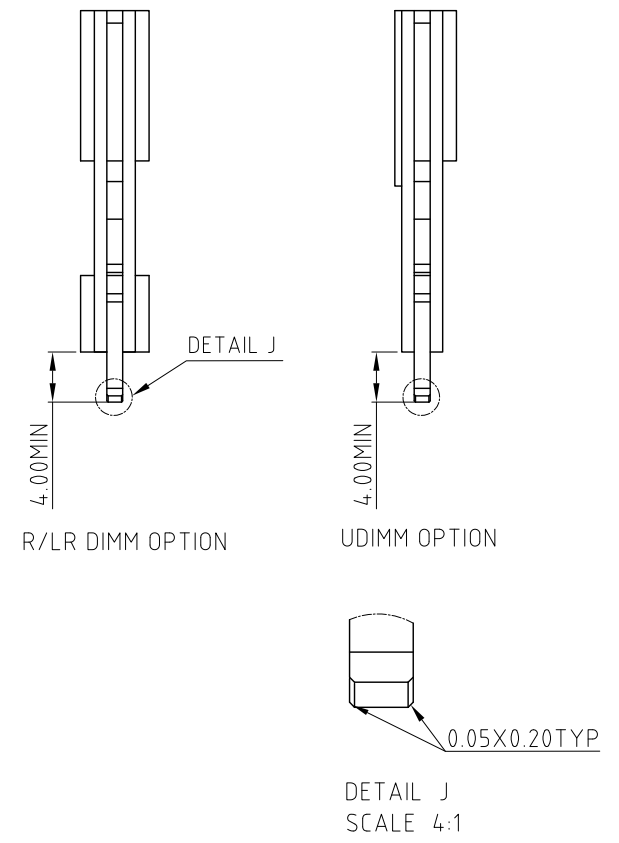
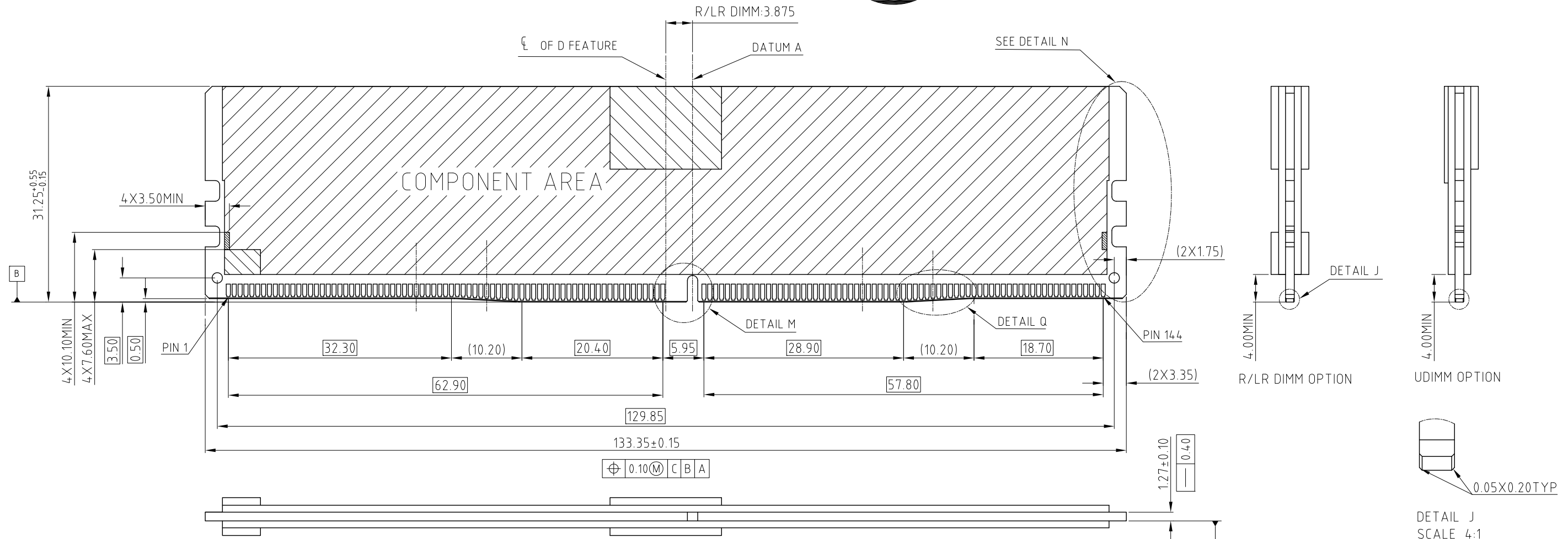
This document is the property of Amphenol Corporation and is delivered on the express condition that it is not to be disclosed, reproduced or used, in whole or in part, for manufacture or sale by anyone other than Amphenol Corporation without its prior consent, & that no right is granted to disclose or to use any information in this document.

CUSTOMER DRAWING



REVISIONS				
SYM	ECN	DESCRIPTION	DATE	APPROVED
		SEE SHEET 1		

DDR5 MODULE  
MORE INFORMATION REFER TO JEDEC MO-329



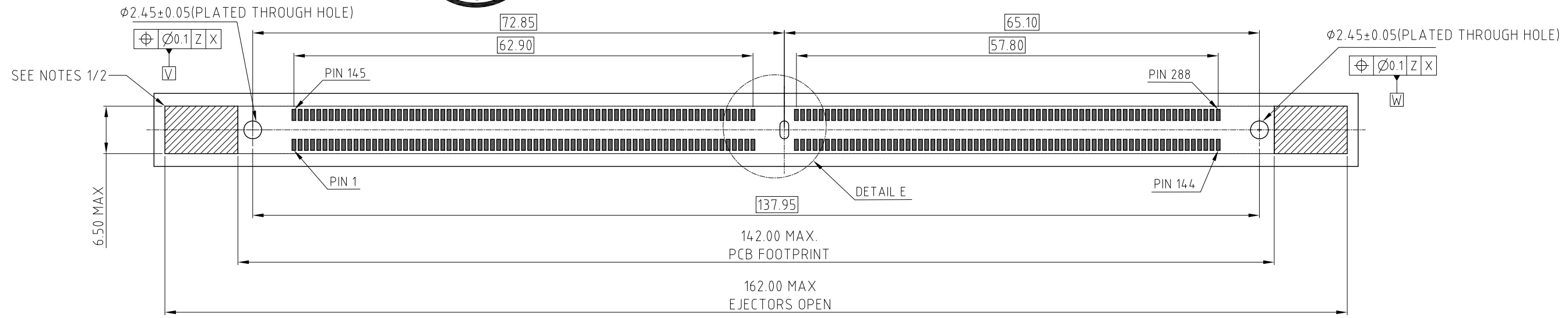
UNLESS OTHERWISE SPECIFIED TOLERANCES		APPROVAL	DATE	Amphenol
U.S.	METRIC	DRAWN	Aug.30,2021	
.X +/-	0.35	Kellen.Yang		TITLE DDR5 288P R/LR DIMM CONNECTOR
.XX +/-	0.25	CHECKED		
.XXX +/-	0.15	CHECKED		SIZE DRAWING NO. A3 C DDR5-04-X-X-X-XXX-X-Q
FRACTIONS +/-	3°			
ANGLES +/-				SCALE NONE SHEET 3 OF 6
FOR MATERIALS AND FINISHES SEE NOTES				
REMOVE SHARP EDGES				REV. 7
DIMENSIONS				
U.S. (METRIC)	INCHES (MM)			

This document is the property of Amphenol Corporation and is delivered on the express condition that it is not to be disclosed, reproduced or used, in whole or in part, for manufacture or sale by anyone other than Amphenol Corporation without its prior consent, & that no right is granted to disclose or to use any information in this document.

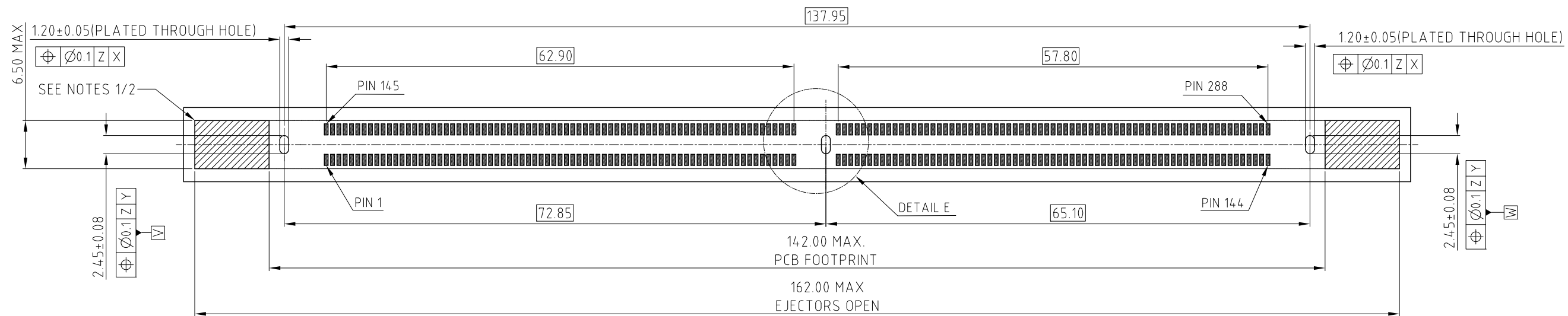


CUSTOMER DRAWING

REVISIONS				
SYM	ECN	DESCRIPTION	DATE	APPROVED
		SEE SHEET 1		



RECOMMENDED PCB FOOTPRINT (OPTION 1)



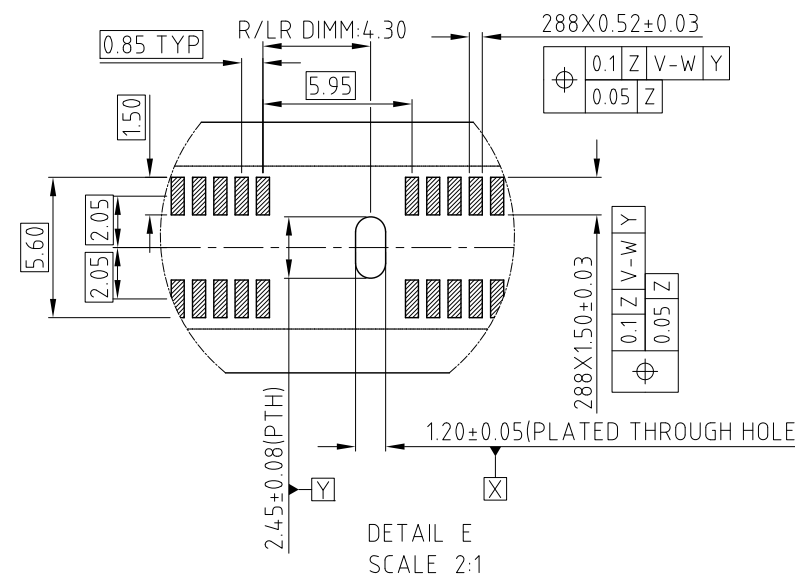
RECOMMENDED PCB FOOTPRINT (OPTION 2)

ADDITIONAL NOTES:

- KEEP OUT CROSS HATCH IS RESERVED FOR SOCKET EJECTORS AT BOTH ENDS.
- KEEP OUT ZONE IS HEIGHT LIMITED PER NOTE 1.
- RECOMMENDED STENCIL THICKNESS:

REFLOW CONDITION	THICKNESS OF STENCIL
AIR	0.18MM MIN
NITROGEN	0.18MM MIN
REWORK	0.20MM MIN

RECOMMENDED PCB LAYOUT  
MORE INFORMATION REFER TO JEDEC SO-023



UNLESS OTHERWISE SPECIFIED TOLERANCES U.S. METRIC .X +/- 0.35 .XX +/- 0.25 .XXX +/- 0.15 FRACTIONS +/- ANGLES +/- 3° FOR MATERIALS AND FINISHES SEE NOTES REMOVE SHARP EDGES DIMENSIONS U.S. INCHES (METRIC) (MM)	APPROVAL	DATE	Amphenol
	DRAWN Kellen.Yang	Aug.30,2021	
	CHECKED		TITLE
	CHECKED		DDR5 288P R/LR DIMM CONNECTOR
	DRAWING FILE : DRAWING\DDR\DDR504XXXXXXQ		SIZE DRAWING NO.
	ANGLE OF PROJECTION		A3 C DDR5-04-X-X-X-XXX-X-Q
			REV. 7
	SCALE	NONE	SHEET 4 OF 6

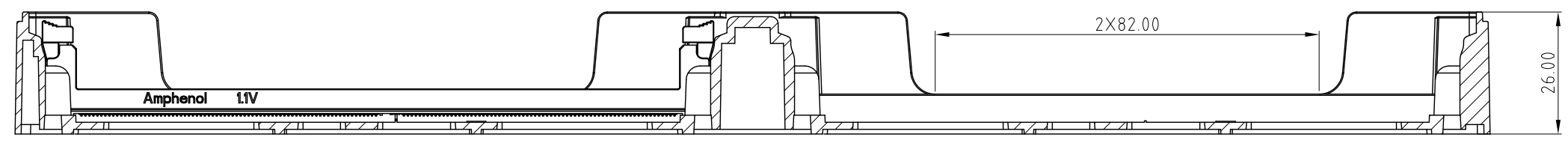
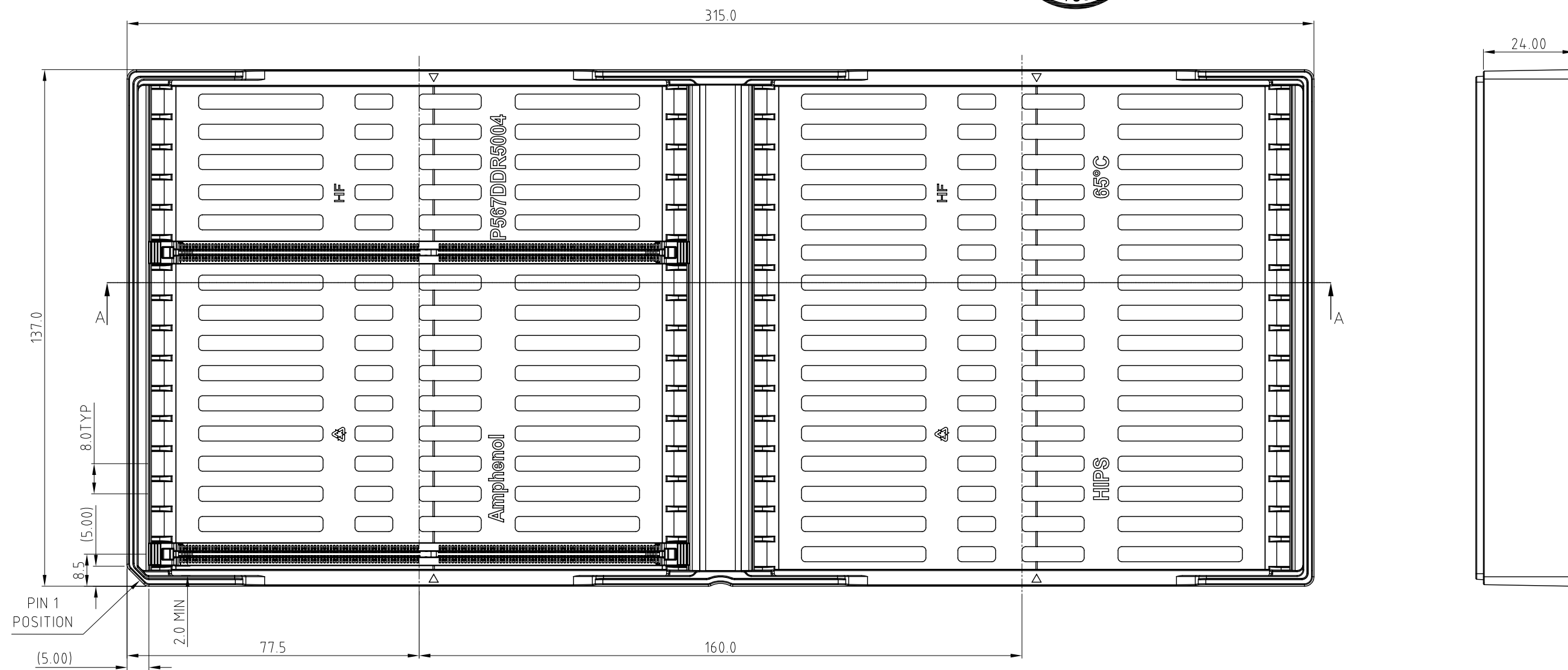
This document is the property of Amphenol Corporation and is delivered on the express condition that it is not to be disclosed, reproduced or used, in whole or in part, for manufacture or sale by anyone other than Amphenol Corporation without its prior consent, & that no right is granted to disclose or to use any information in this document.

CUSTOMER DRAWING



REVISIONS				
SYM	ECN	DESCRIPTION	DATE	APPROVED
		SEE SHEET1		

PACKING TRAY DRAWING



SECTION A-A

- NOTES:  
 1. MATERIAL: HIPS, BLACK  
 2. QUANTITY: 32PCS/TRAY

UNLESS OTHERWISE SPECIFIED TOLERANCES		APPROVAL	DATE	Amphenol	
.X	+/-	DRAWN	Kellen.Yang		
.XX	+/-	CHECKED			TITLE DDR5 288P R/LR DIMM CONNECTOR
.XXX	+/-	CHECKED			
FRACTIONS	+/-	DRAWING FILE : DRAWING\DDR\DDR504XXXXXXQ		SIZE	DRAWING NO.
ANGLES	+/-	REMOVE SHARP EDGES		A3	C DDR5-04-X-X-X-XXX-X-Q
DIMENSIONS		ANGLE OF PROJECTION		SCALE	NONE
U.S.	INCHES			SHEET	5 OF 6
(METRIC)	(MM)			REV.	7

This document is the property of Amphenol Corporation and is delivered on the express condition that it is not to be disclosed, reproduced or used, in whole or in part, for manufacture or sale by anyone other than Amphenol Corporation without its prior consent, & that no right is granted to disclose or to use any information in this document.

CUSTOMER DRAWING

REVISIONS				
SYM	ECN	DESCRIPTION	DATE	APPROVED
		SEE SHEET1		

NOTES:

1. MATERIAL:
  - 1.1 HOUSING: HIGH TEMPERATURE THERMAL PLASTIC, UL94V-0, COLOR:OPTION.
  - 1.2 LATCH: HIGH TEMPERATURE THERMAL PLASTIC, UL94V-0. COLOR: OPTION.
  - 1.3 TERMINAL: COPPER ALLOY.
  - 1.4 BOARDLOCK: COPPER ALLOY.
  - 1.5 METAL CLIP: SUS.
2. FINISH:
  - 2.1 TERMINAL:
    - 2.1.1 CONTACT AREA: SELECTED GOLD PLATING;
    - 2.1.2 SOLDERING AREA: MATTE TIN PLATING 100u" THICKNESS MIN; UNDER PLATING: NICKEL PLATING 50u" THICKNESS MIN. UNLESS OTHERWISE SPECIFIED
  - 2.2 BOARDLOCK:
    - 2.2.1 100u" MIN LEAD FREE MATTE TIN OVER 50u" MIN NICKEL UNDERPLATED OVERALL.
3. ELECTRICAL CHARACTERISTICS:
  - 3.1 CONTACT CURRENT RATING:1.0A MAX
  - 3.2 INSULATION RESISTANCE:1MΩ MIN. 500ADC.
  - 3.3 DIELECTRIC WITHSTANDING VOLTAGE:500 VAC AT SEA LEVEL.
  - 3.4 LOW LEVEL CONTACT RESISTANCE:
    - INITIAL:40mΩ MAX.
    - FINAL:THE CHANGE IN LLCR BETWEEN THE READING AFTER STRESS AND THE INITIAL READING SHALL NOT EXCEED 20 mΩ MAX.
4. MECHANICAL CHARACTERISTICS:
  - 4.1 CONTACT RETENTION FORCE:300gF MIN/PER PIN.
  - 4.2 DURABILITY:25 CYCLES.
  - 4.3 INSERTION FORCE (MODULE TO CONNECTOR) :106.8N MAX. UNMATING FORCE :19.77N MIN.
5. RELIABILITY AND OTHER CHARACTERISTICS:
  - 5.1 SOLDERABILITY -LEAD FREE: JESD22-B102; CONDITION C, 8 HOURS ±15 MINUTES STEAM PRECONDITION.
  - 5.2 VIBRATION: EIA-364-28, RANDOM PROFILE:
    - 5 HZ @ 0.01 g<sup>2</sup>/HZ TO 20HZ @ 0.02g<sup>2</sup>/HZ (SLOPE UP), 20 HZ TO 500HZ @ 0.02g<sup>2</sup>/HZ (FLAT), INPUT ACCELERATION IS 3.13g RMS.
  - 5.3 CYCLIC TEMPERATURE AND HUMIDITY: PER EIA-364-31, METHOD III WITHOUT CONDITIONING, INITIAL MEASUREMENTS, COLD SHOCK AND VIBRATION.
  - 5.4 THERMAL SHOCK: PASSED PER EIA-364-32, METHOD A, TABLE 2, TEST CONDITION 1, -55°C TO 85°C. PERFORM 5 CYCLES IN MATED CONDITION.
  - 5.5 MECHANICAL SHOCK: EIA-364-27, TEST CONDITION E,
  - 5.6 OPERATING TEMPERATURE: -55°C TO 85°C.
6. HALOGEN-FREE COMPLIANT PRODUCT. MEET AMPHENOL SPEC # S-SN-004.
7. ORDER PN SYSTEM:



DDR5 XX X X X XXX X X

DOUBLE DATA RATE 5 SERIES

XX: APPLICATION TYPE  
04: SMT,288P, R/LR DIMM CONNECTOR  
.....

X: HOUSING COLOR  
1: BLACK  
2: NATURAL (IVORY)  
3: YELLOW  
4: BLUE  
.....

X: LATCH COLOR  
1: BLACK  
2: NATURAL (IVORY)  
3: YELLOW  
4: BLUE  
.....

X: CUSTOMER CODE OPTION:  
Q: FOR QUANTA

.....

X: PACKING AND MYLAR OPTIONS  
T: SOFT TRAY  
H: HARD TRAY PACKAGE, WITH MYLAR "X"=40MM  
J: HARD TRAY PACKAGE, WITH MYLAR "X"=70MM  
K: HARD TRAY PACKAGE, WITHOUT MYLAR  
M: HARD TRAY PACKAGE, WITH MYLAR "X"=90MM  
C: HARD TRAY PACKAGE,WITH CAP "X"=70MM;"Y"=6MM  
.....

SEE SEQUENCE NUMBER TABLE

X: CONTACT PLATED  
0: GOLD FLASH  
1: 15u" Au ON CONTACT AREA  
2: 30u" Au ON CONTACT AREA  
3: 15u" MIN GXT  
4: 30u" MIN GXT  
5: 15u" Au ON CONTACT AREA AND 90u" Ni MIN ON UNDERPLATING:  
6: 30u" Au ON CONTACT AREA AND 90u" Ni MIN ON UNDERPLATING:  
8: 18u" AU ON CONTACT AREA  
.....

SEQUENCE NUMBER		
CODE	OPTION DESCRIPTION	FIGURE DIM "H"
001	1. STANDARD HOUSING 2. STANDARD LATCH 3. FORK LOCK	(2.50)
002	1. STANDARD HOUSING 2. STANDARD LATCH 3. METAL TAB	(2.65)
005	1. STANDARD HOUSING 2. SHORT LATCH 3. FORK LOCK	(2.50)
006	1. STANDARD HOUSING 2. SHORT LATCH 3. METAL TAB	(2.65)
007	1. STANDARD HOUSING 2. STANDARD LATCH 3. METAL TAB	(1.85)
008	1. STANDARD HOUSING 2. SHORT LATCH 3. METAL TAB	(1.85)
.....		

UNLESS OTHERWISE SPECIFIED TOLERANCES U.S. METRIC .X +/- 0.35 .XX +/- 0.25 .XXX +/- 0.15 FRACTIONS +/- ANGLES +/- 3°	APPROVAL	DATE	Amphenol
	DRAWN Kellen.Yang	Aug.30,2021	
FOR MATERIALS AND FINISHES SEE NOTES	DRAWING FILE : DRAWING\DDR\DDR504XXXXXXQ	TITLE DDR5 288P R/LR DIMM CONNECTOR	
REMOVE SHARP EDGES	ANGLE OF PROJECTION	SIZE	DRAWING NO.
DIMENSIONS		A3	C DDR5-04-X-X-X-XXX-X-Q
U.S. (METRIC)	INCHES (MM)	SCALE	REV.
		NONE	7
		SHEET 6 OF 6	