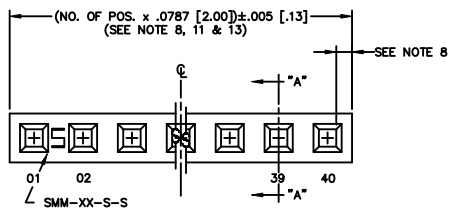
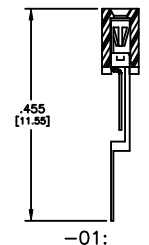


REVISION BM



IN PROCESS



NOTES:

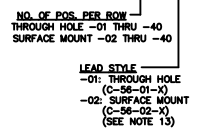
- RETENTION FORCE IN BODY TO BE: 1 lbs. MIN
- INSERTION FORCE TO BE: 3.0 oz. MAX.
- WITHDRAWAL FORCE TO BE: 0.4 oz. MIN.
- ⊙ REPRESENTS CRITICAL DIMS. FOR STATISTICAL PROCESS CONTROL.
- [] DIMS ARE IN METRIC AND ARE NOT CONTROLLING DIMS.
- SMM-105-01-X THRU SMM-140-01-X MUST USE PT-1-24-01-12.
- "-LC" OPTION FOR A 02 POSITION WILL HAVE ONLY ONE LOCKING CLIP (LC-05-T).
- "END WALLS" AFTER CUTTING SHOULD BE .025±.005.
- ALL OPTIONS: PACKAGE POSITIONS -02 THRU -40 IN TUBES. LAYER PACKAGE POSITIONS -02 & -03 WITH NO OPTIONS.
- 02 THRU -05 POSITION WITH -K, -P, OR -LC TO BE PACKAGED IN -TR ONLY. -06 THRU -40 POSITION AVAILABLE IN TUBE OR -TR PACKAGING.
- MAX CUT FLASH: .010 [0.25]
- DUE TO THE HIGH AMOUNT OF INSERTION FORCE NEEDED, THE -LC OPTION IS NOT COMPATIBLE WITH AUTO PLACEMENT. SAMTEC RECOMMENDS MANUAL PLACEMENT FOR ALL ASSEMBLIES WITH THE -LC OPTION.
- FOR -02 LEAD STYLE: EVEN CUTS: LOSE 2 POSITIONS PER CUT; ODD CUTS: LOSE 1 POSITION PER CUT.
- INSULATOR MATERIAL: BLACK, LCP, UL 94 V0
- MAXIMUM PIN HEIGHT VARIATION: .003 [0.08] FROM ROW TO ROW AND PIN TO PIN, MUST BE MEASURED BETWEEN ADJACENT PINS.
- ORDERS WILL BE PACKAGED ACCORDING TO THE SAMTEC PACKAGING EFFICIENCY STANDARDS (SPES) FOUND ON WWW.SAMTEC.COM.
- ATTACH LABEL TO EACH REEL.

DIMENSIONS ARE IN INCHES UNLESS OTHERWISE NOTED TOLERANCES ARE:

ONE PLACE DECIMALS: ±.1	THREE PLACE DECIMALS: ±.005	ANGLES: ±1°
TWO PLACE DECIMALS: ±.01	FOUR PLACE DECIMALS: ±.0020	

TITLE: 2 mm SOCKET STRIP (SINGLE ROW) DWG NO: SMM-1XX-XX-XX-S-XX-XX-X-XX SHEET 1 OF 11

SMM-1XX-XX-XX-S-XX-XX-X-XX



PACKAGING: BLANK TUBES (SEE NOTE 9), -TR: TUBE & REEL (SEE NOTES 18 & 17), -FR: FULL REEL QTY TAPE & REEL (SEE NOTES 16 & 17), (-XR MAX POSITIONS AVAILABLE: 27 VERTICAL / 28 HORIZONTAL)

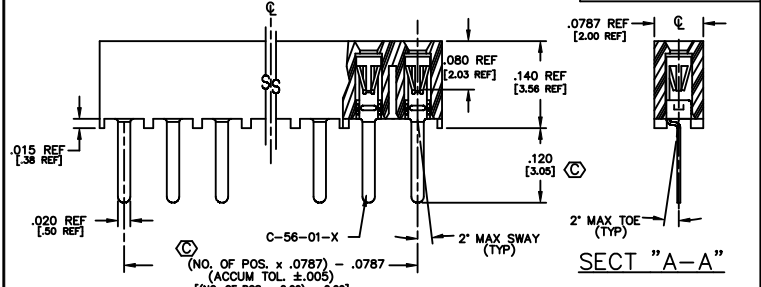
OPTION: -P: PICK & PLACE PAD (USE PPP-09), -K: POLYIMIDE FILM PAD (.005 [0.13] THICKNESS) [2 POS MIN, SEE NOTE 10] (USE K-DOT-.118-.219-.005)

POLARIZING OPTION: INDICATE POSITION (USE PK-07-N), -LC: LOCKING CLIP (USE 2 LC-05-TM (AVAILABLE ONLY WITH LEAD STYLE -02. SEE DIMS) (SEE NOTES 7 & 12)

ROW OPTION: -S: SINGLE ROW (USE SMM-XX-S-S)

PLATING OPTION

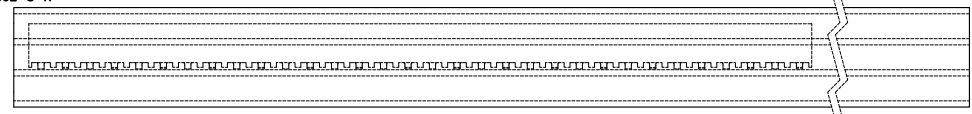
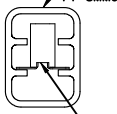
- S: 30μ SELECTIVE GOLD IN CONTACT AREA, MATTE TIN ON TAIL
- F: 3μ FLASH SELECTIVE GOLD IN CONTACT AREA, MATTE TIN ON TAIL
- H: 30μ HEAVY GOLD IN CONTACT AREA, MATTE TIN TAIL
- SM: 30μ SELECTIVE GOLD IN CONTACT AREA, MATTE TIN TAIL
- FM: 3μ FLASH SELECTIVE GOLD IN CONTACT AREA, MATTE TIN TAIL



SECT "A-A"

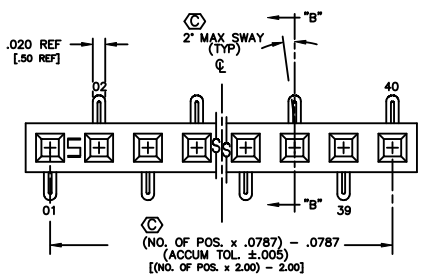
-01: THROUGH HOLE

* PINS INTERLEAVED AND ORIENTED SAME DIRECTION FOR -01 ONLY

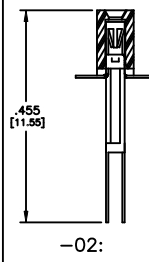


TUBE PACKAGING TABLE

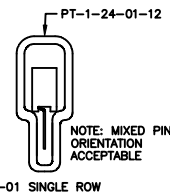
LEAD STYLE	TUBE	PLUG
-01	PT-1-24-01-12	TP-12
-01-P	PT-1-24-02-29	TP-24
-02		
-02-K, -02-LC, -02-LC-K	PT-SMM002-S-K	TP-24-02
-02-P	PT-SMM001-S-P	TP-24



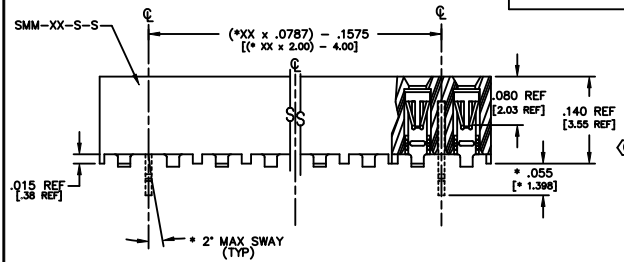
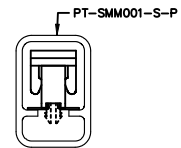
IN PROCESS



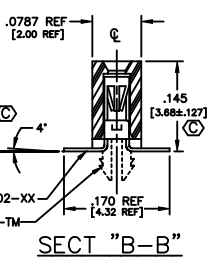
PACKAGE PARTS IN TUBE AS SHOWN (POSITION PARTS WITH POS. -01 TOWARD ARROW AS SHOWN)



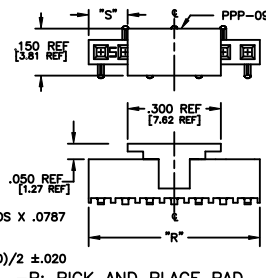
-01 SINGLE ROW



-02: SURFACE MOUNT

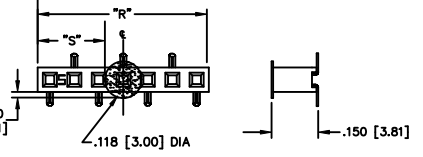


SECT "B-B"



"R" = No OF POS X .0787
"S" = (.150 - .300) / 2 ±.020
-P: PICK AND PLACE PAD (PLACE PPP-09 ABOUT C.L. AS SHOWN)

-K: POLYIMIDE FILM PAD [2 POSITION MINIMUM, SEE NOTE 10]



NOTE: "R" = USED MEASURED DIMENSION (REF)
"S" = ("R" - .118 [3.0]) / 2 ±.020 [0.51]

DESIGN/ASSEMBLY/QUALITY CONTROL
samtec
520 PARK EAST BLVD. NEW ALBANY, INDIANA 47150
PHONE (812) 944-6733 P.O. BOX 1147
CODE 55322

MADE BY: WATT KOLB S-22-01
DESIGNED BY: MCCARTIN
SHEET 1 OF 11

PROHIBITED BY SAMTEC
REPRODUCTION OF THIS DOCUMENT IS PROHIBITED WITHOUT THE WRITTEN PERMISSION OF SAMTEC