

REV.	DATE	DESCRIPTION
A	Dec. 16, '20	1st RELEASE

### Specifications

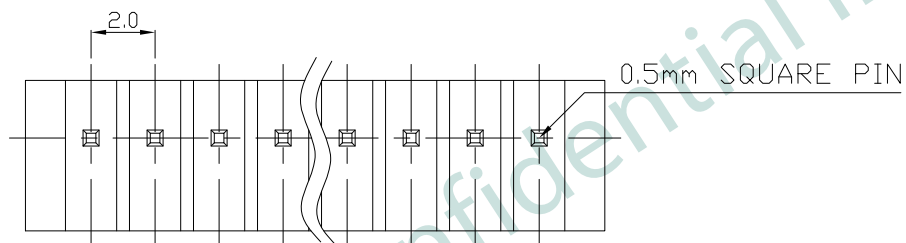
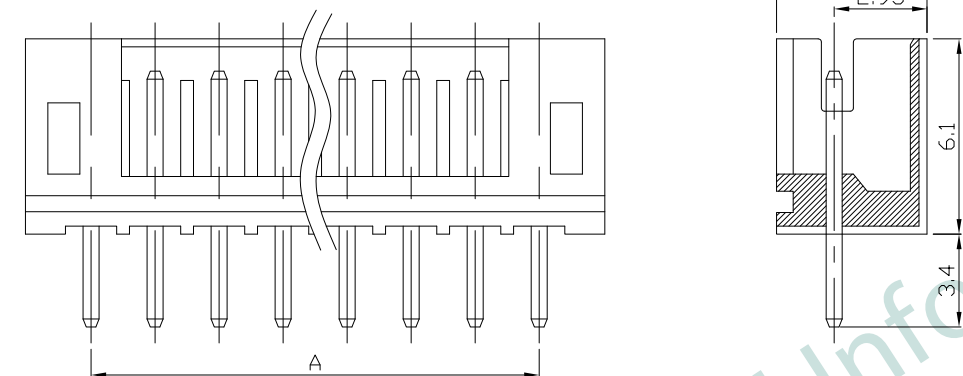
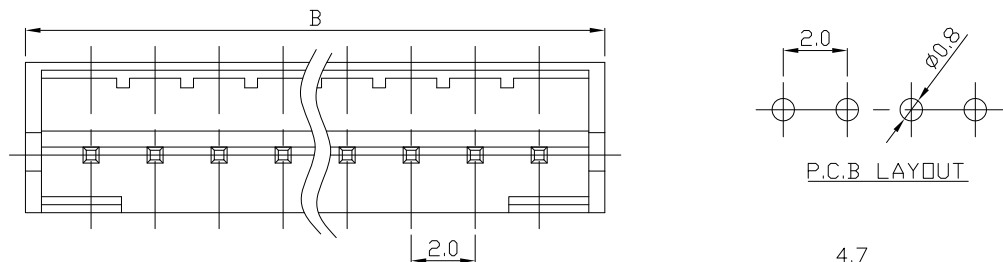
#### Electrical

- Voltage Rating: 100V(AC)
- Current Rating: 2A
- Contact Resistance: 20mΩ max.
- Dielectric Withstandeing Voltage: 800V AC/1min.
- Insulation Resistance: 1000MΩ min.

#### Material

- Circuits: 2~16
- Insulator: Nylon 66 UL 94V-0
- Color: White or Natural
- Contact: Brass 0.50mm(0.20") Square Pin
- Plating: Tin Plated
- Temperature Range: -25° C~+85° C
- Applicable PC Board Thickness: 0.8 to 1.6mm

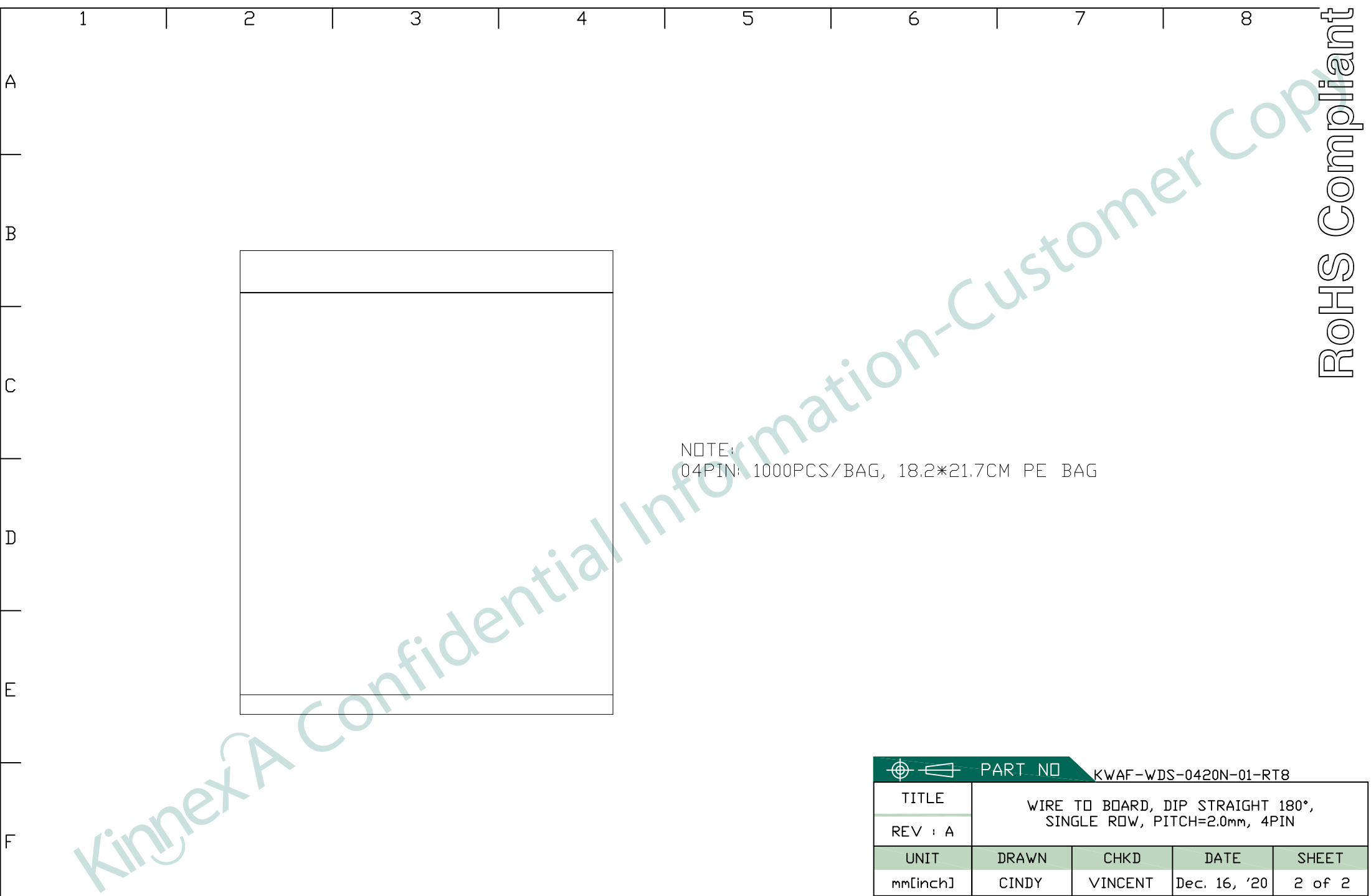
Poles	Dimension mm (in.)	
	A	B
02	2.0(0.079)	6.1(0.240)
03	4.0(0.157)	8.1(0.318)
<b>04</b>	<b>6.0(0.236)</b>	<b>10.1(0.397)</b>
05	8.0(0.315)	12.1(0.476)
06	10.0(0.394)	14.1(0.555)
07	12.0(0.472)	16.1(0.634)
08	14.0(0.551)	18.1(0.713)
09	16.0(0.630)	20.1(0.791)
10	18.0(0.709)	22.1(0.870)
11	20.0(0.787)	24.1(0.949)
12	22.0(0.886)	26.1(1.028)
13	24.0(0.945)	28.1(1.106)
14	26.0(1.024)	30.1(1.185)
15	28.0(1.102)	32.1(1.263)
16	30.0(1.181)	34.1(1.343)



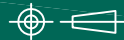
K W A F - W D S - 0 4 2 0 N - 0 1 - R T 8

PRODUCT SERIES: K W A F  
 CATEGORY: W: WIRE TO BOARD  
 PCB CONNECTOR TYPE: D: DIP STRAIGHT 180°  
 S: SINGLE ROW  
 NUMBER OF PIN: 0 4  
 HOUSING COLOR: N: NATURAL  
 PITCH: 20: 2.0mm  
 SERIAL NUMBER: 0 1  
 CUSTOMER CODE: R T 8

PART NO K W A F - W D S - 0 4 2 0 N - 0 1 - R T 8				
TITLE	WIRE TO BOARD, DIP STRAIGHT 180°, SINGLE ROW, PITCH=2.0mm, 4PIN			
REV : A				
UNIT	DRAWN	CHKD	DATE	SHEET
mm[inch]	CINDY	VINCENT	Dec. 16, '20	1 of 2



NOTE:  
04PIN: 1000PCS/BAG, 18.2\*21.7CM PE BAG

 <b>PART NO</b>		KWAF-WDS-0420N-01-RT8		
<b>TITLE</b>	WIRE TO BOARD, DIP STRAIGHT 180°, SINGLE ROW, PITCH=2.0mm, 4PIN			
<b>REV : A</b>				
<b>UNIT</b>	<b>DRAWN</b>	<b>CHKD</b>	<b>DATE</b>	<b>SHEET</b>
mm[inch]	CINDY	VINCENT	Dec. 16, '20	2 of 2