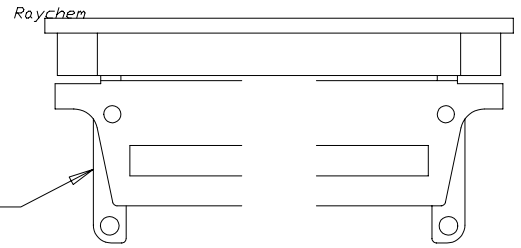
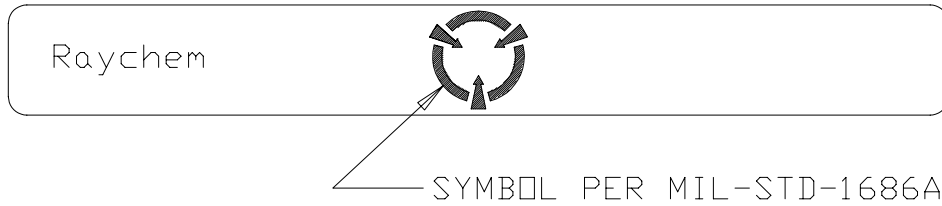
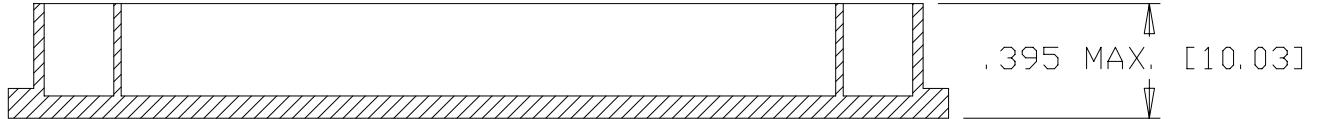
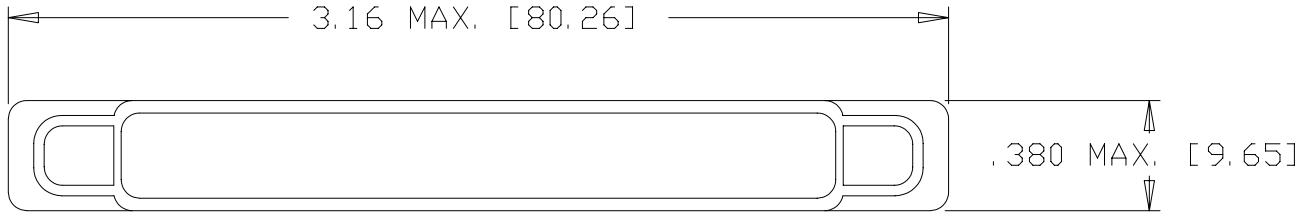


REVISIONS			
LTR	DESCRIPTION	DATE	APPROVED
N/C	INITIAL RELEASE PER ECN# T-17740	92 SEPT 8	Z. TEMAN
A	REVISED PER ECN# T-18523		

NOTES:

- MATERIAL: LNP STATKON-FE (VIRGIN) HIGH DENSITY POLYETHYLENE.  
COLOR: BLACK
- RESISTIVITY OF MATERIAL ELECTRICALLY CONDUCTIVE PER MIL-STD-1686A
- VIEW SHOWING TYPICAL INSTALLATION (ROTATED 180°).



If this document is printed it becomes uncontrolled.  
Check with the web for latest revision.

SPECIFICATION CONTROL DRAWING © Raychem Corporation 1992

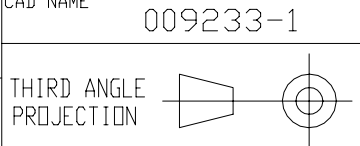
UNLESS OTHERWISE SPECIFIED  
DIMENSIONS ARE IN INCHES.  
METRIC DIMENSIONS ARE  
IN BRACKETS.

DECIMALS  
.XXX ± — [ — mm]  
.XX ± — [ — mm]

ANGLES  
.X ± —

WEIGHT  
2.37 g MAX.

DRAWN	J. B. K.	92 AUG 10
CHECKED		
APPROVED		
APPROVED	Z. TEMAN	92 SEPT 8
CAD NAME	009233-1	



RAYCHEM CORPORATION 300 CONSTITUTION DRIVE MENLO PARK, CALIFORNIA 94025			
TITLE CAP, DUST, PLUG, 2 INCH, CONDUCTIVE, MTC SERIES			
PCN: 707379			
SIZE	CODE IDENT. NO.	DWG. NO.	REV
A	06090	CHA-0269	A
DO NOT SCALE THIS DRAWING			SHEET 1 OF 1