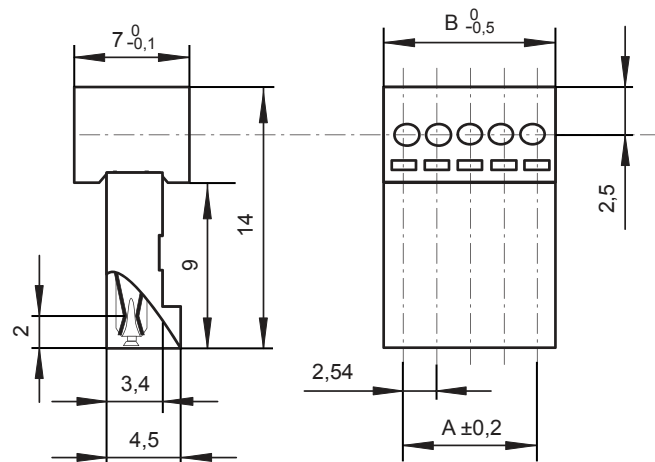
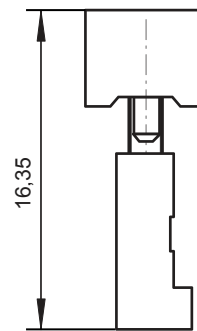


After cabling



Before cabling



TECHNICAL CHARACTERISTICS

MATERIAL  
 INSULATOR: PBT  
 FLAMMABILITY RATING: UL94V0  
 COLOR: BLACK  
 METAL: PHOSPHOR BRONZE  
 PLATING: TIN  
 QUALITY CLASS: 25 MATING CYCLES

ENVIRONMENTAL  
 OPERATING TEMPERATURE: -40°C UP TO +125°C  
 COMPLIANCE: LEAD FREE AND ROHS

ELECTRICAL  
 CURRENT RATING: 3 A  
 WORKING VOLTAGE: 50 VAC  
 WITHSTANDING VOLTAGE: 500 VAC/MIN  
 INSULATION RESISTANCE: >1000 MΩ  
 CONTACT RESISTANCE: 20 mΩ MAX

MECHANICAL  
 STRANDED WIRE: 28-26 AWG

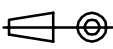
PACKAGING  
 TUBES

A = (nb. pin-1) x pitch  
 B = (nb. pin x pitch)

RoHS Compliant


|     |           |                   |    |
|-----|-----------|-------------------|----|
| G   |           |                   |    |
| F   |           |                   |    |
| E   |           |                   |    |
| D   | 17-JUN-16 | DESCRIPTION       | AK |
| C   | 07-DEC-15 | MECHANICAL / PACK | AK |
| B   | 20-OCT-15 | UPDATE            | AK |
| A   | 19-SEP-14 | PDF               | AK |
| REV | DATE      | FILE              | BY |

PROJECTION:



APPROVAL: BBu

|                   |      |
|-------------------|------|
| GENERAL TOLERANCE | ±0,1 |
| UNIT: MM          |      |
| SCALE:            |      |
| SHEET: 1/2        |      |
| DRAW: AK          |      |



DESCRIPTION: 2.54 MM AUTOCOM SINGLE ROW FEMALE RIGHT ANGLED IDC RECEPTACLE FOR AWG#28-26 WITH RIBBON FLAT CABLE ON LOCKING SIDE  
 WERI PART NO: 661 0xx 152 222

SIZE  
**A4**

1

2

3

4

5

## Cautions and Warnings:

This electronic component is designed and developed with the intention for use in general electronics equipments.

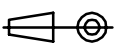

Before incorporating the components into any equipments in the field such as aerospace, aviation, nuclear control, submarine, transportation, (automotive control, train control, ship control), transportation signal, disaster prevention, medical, public information network etc. where higher safety and reliability are especially required or if there is possibility of direct damage or injury to human body, Würth Elektronik must be asked for a written approval.

In addition, even electronic component in general electronic equipments, when used in electrical circuits that require high safety, reliability functions or performance, the sufficient reliability evaluation-check for the safety must be performed before by the user before usage.

A

B

C

|                |           |      |    |  |   |   |                         |                   |
|----------------|-----------|------|----|--|---|---|-------------------------|-------------------|
| RoHS Compliant |           |      |    | PROJECTION:<br> | GENERAL TOLERANCE<br>.X = +/- 0.2<br>.XX = +/- 0.15 |  | DESCRIPTION: DISCLAIMER | SIZE<br><b>A4</b> |
| G              |           |      |    |  |   |   |                         |                   |
| F              |           |      |    |  |   |   |                         |                   |
| E              |           |      |    |  |   |   |                         |                   |
| D              |           |      |    |  |   |   |                         |                   |
| C              |           |      |    | APPROVAL: JC   | UNIT: MM  | WERI PART NO: DISCLAIMER  | SIZE<br><b>A4</b>       |                   |
| B              |           |      |    |  | SCALE:  |   |                         |                   |
| A              | 10-SEP-14 | PDF  | QL |  | SHEET: 2/2  |   |                         |                   |
| REV            | DATE      | FILE | BY |  | DRAW: QL  |   |                         |                   |

D