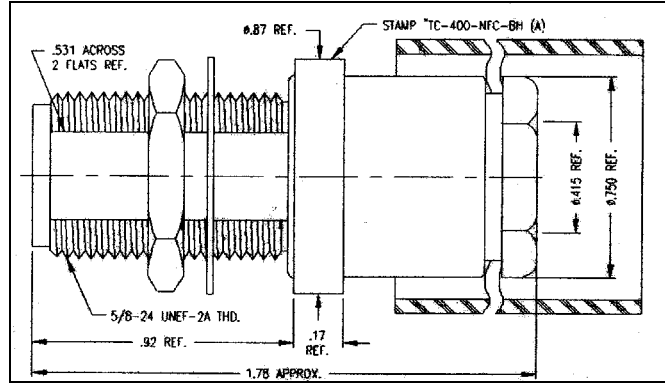


THE REVISION STATUS OF ALL SHEETS OF THIS DRAWING IS THE SAME AS SHEET 1

| LTR | DESCRIPTION | DATE | BY |
|-----|-------------|---------|-----|
| - | Released | 5/21/01 | JCL |
| | | | |



I. MATERIALS & FINISHES

- center contact: Gold Plated Beryllium Copper
- outer contact: Alballoy Plated Brass
- body: Alballoy Plated Brass
- crimp sleeve: Alballoy Plated Copper
- dielectric: Teflon® PTFE
- gasket: Silicone Rubber
- shrink sleeve: Adhesive Lined Polyolefin
- attachment: braid clamp

II. ELECTRICAL PROPERTIES

- impedance: 50 ohms
- working voltage: 1000 vrms (max)
- vswr: 1.25:1 (max) up to 2 GHz
- insertion loss: $0.10 \times \sqrt{F_{ghz}}$

Unless otherwise specified, dimensions are in inches. Tolerances are applicable when specified.

These drawings and specifications contain proprietary information which is the property of Times Microwave Systems.

| Approvals | | |
|-----------|-----|---------|
| Drawn | JCL | 5/21/01 |
| | | |
| | | |
| | | |



TIMES MICROWAVE SYSTEMS

Wallingford, CT 06492
 (203) 949-8400; (203) 949-8423.Fax
 www.timesmicrowave.com

TC-400-NFC-BH (A)

Type-N female Bulkhead
 for LMR-400 Cable

| | | |
|-----------|---------------------------|---------------------------------|
| Size A | CAGE CODE 68999 | Drawing No.: 3190-872 |
| Scale: NA | Rev. (-) | Sheet: 1 of 1 |