

THIS DRAWING IS UNPUBLISHED.

RELEASED FOR PUBLICATION

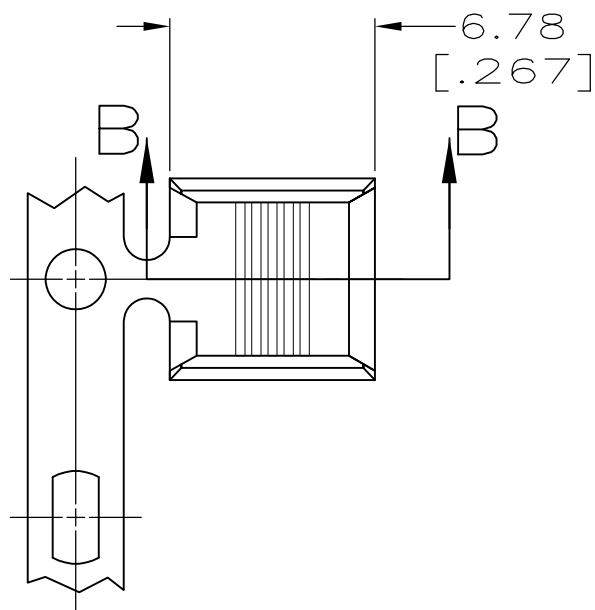
ALL RIGHTS RESERVED.

© COPYRIGHT - By -

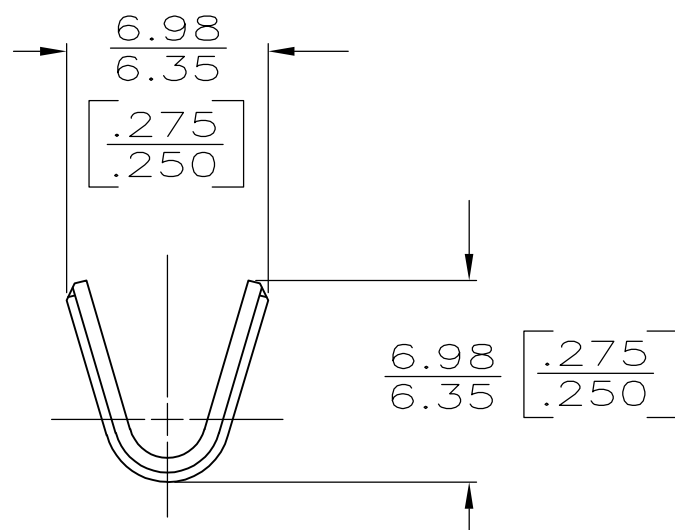
LOC AF DIST 50

REVISIONS

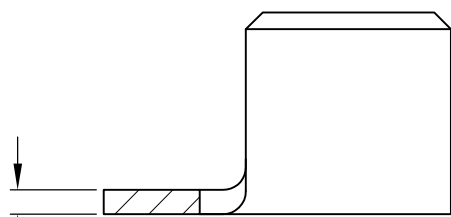
P	LTR	DESCRIPTION	DATE	DWN	APVD
	E	ECR-13-003819	06AUG13	GRZ	DZ



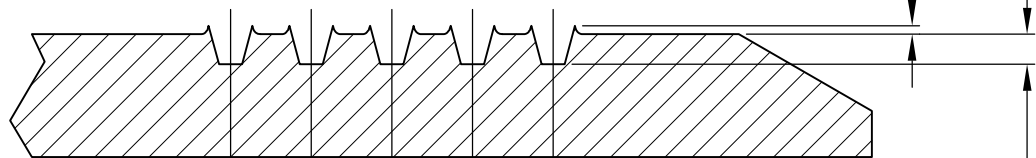
1 CONTINUOUS STRIP ON REEL.
 2 CRIMP WIDTH: .180 F TYPE (AMPLIVAR THRU)
 CRIMP HEIGHT (± 0.002) = (TOTAL CMA + 28,700) / 317,400
 GENERAL APPLICATION GUIDELINES MUST BE FOLLOWED AS SPECIFIED IN CATALOG #82221
 FOR APPLICATION INFORMATION CALL: 1-800-722-1111
 FOR PRODUCT INFORMATION CALL: 1-800-522-6752



0.80 \pm 0.025
 [.032 \pm .001]




0.08 MAX
 [.003]



SECTION B-B
 SCALE 20:1

2	10,000-16,000 CMA	63561-1
	WIRE RANGE	PART NUMBER

THIS DRAWING IS A CONTROLLED DOCUMENT.		DWN 05JUN2002 MICHAEL S. FEHER	 TE Connectivity	
DIMENSIONS: mm [INCHES]		CHK 05JUN2002 GARY D. PORTA		
TOLERANCES UNLESS OTHERWISE SPECIFIED:		APVD 05JUN2002 GARY D. PORTA	NAME	
0 PLC $\pm -$ 1 PLC $\pm -$ 2 PLC ± 0.25 [.010] 3 PLC $\pm -$ 4 PLC $\pm -$ ANGLES $\pm -$		PRODUCT SPEC	SPLICE, AMPLIVAR™, 5 SERRATIONS	
MATERIAL BRASS		FINISH TIN PLATE	APPLICATION SPEC	RESTRICTED TO
		WEIGHT -	SIZE A3	CAGE CODE 00779
		CUSTOMER DRAWING	DRAWING NO C-63561	SCALE 4:1
			SHEET 1 OF 1	REV E