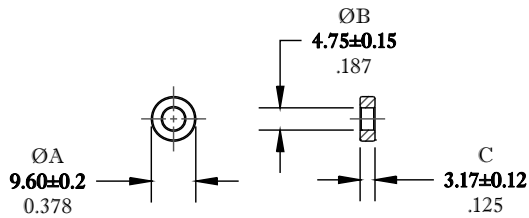


\*\* Not all features are shown in this drawing. For more detailed information, please contact your Fair-Rite representative.

SIZE	PART NO.	REV.
B	5979000201	~

UNCONTROLLED ~CATALOG~ DRAWING



DIMENSIONS  
**BOLD NUMBERS ARE IN MILLIMETERS**  
 LIGHT NUMBERS ARE IN INCHES

ELECTRICAL SPECIFICATIONS						
$\Sigma l/A(\text{mm}^{-1})$	$l_e$ (mm)	$A_e$ (mm <sup>2</sup> )	$V_e$ (mm <sup>3</sup> )	$L_o$ (nH)	$A_L$ (nH) @10 kHz <10gauss	$\tan \delta/\mu$ @500 kHz <1gauss
2.812	20.8	7.39	156	0.447	600±25%	≤15X10E-6

POWER LOSS @ 100°C  
 f=500 kHz, 500g P.L. <0.019 Watts

NOTES:

1 - BURNISH TO REMOVE SHARP EDGES.

FR# 79

<b>FAIR-RITE PRODUCTS CORP.</b>						
TITLE TOROID						
DRAWN BY D. FOOTE	DATE 3/20/2019	SIZE	PART NO.		REV.	
CHKD BY		B	5979000201		~	
APPRVD BY		SCALE	NONE	SHEET 1 of 1		