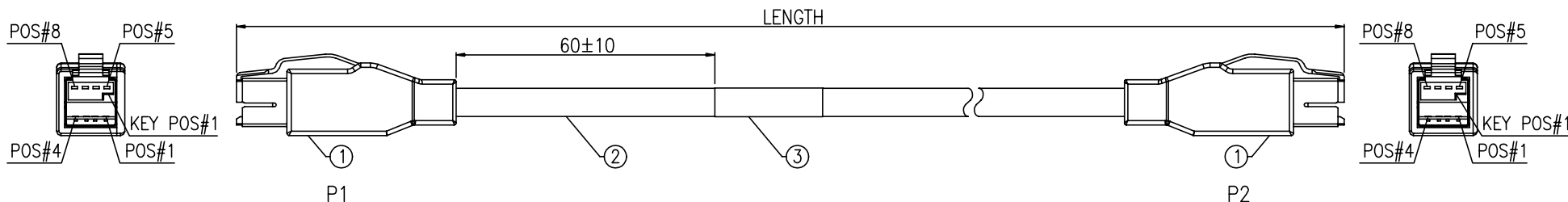


FCI PART NO.	LENGTH
10127528-Z0100YYLF	1000±20
10127528-Z0300YYLF	3000±20
10127528-Z0280YYLF	2800±30



PIN ASSIGNMENT				
P1	SIGNAL NAME	WIRE COLOR	WIRE AWG	P2
1	VBUS (+5V)	RED	20	1
2	DATA -	WHITE	28 *	2
3	DATA +	GREEN	28 *	3
4	USB GND	BLACK	20	4
5	12V RETURN	BLUE	20	5
6	+12V	BROWN	20	6
7	+12V	ORANGE	20	7
8	12V RETURN	YELLOW	20	8
SHELL	FRAME GND	BRAID		SHELL

* TWISTED PAIR

1	EA	ADHESIVE LABEL: W=25mm, COLOR:TRANSPARENT	3
A/R	M	USB+POWER CABLE: 28AWG*1P+20AWG*6C+SHIELD, COLOR:PEBBLE GRAY	2
2	SET	12V USB+POWER PLUG KIT, COVER COLOR:GRAY, FCI P/N:74233-102LF	1
Q'TY	UNIT	DESCRIPTION	ITEM

spec ref	See Notes			dr	Carl Wang	2015-01-27	projection	MM	size	A3	scale	N/A
tolerance std	TOLERANCES UNLESS OTHERWISE SPECIFIED			eng	Carl Wang	2015-01-27			ecn no			
surface	linear	0.X	±	FCI	www.fci.com	cat. no.		product family	rel level	10127528	rev	A
		0.XX	±									
		0.XXX	±									
	angular	0°	±°									

title	USB+POWER(12V) TO 2x4 LATCH-N-LDK CABLE ASSEMBLY	dwg no	10127528	rev	A
Product - Customer Drw		sheet 1 of 2			



FCI PART NO.

SEE SHEET 1

NOTES:

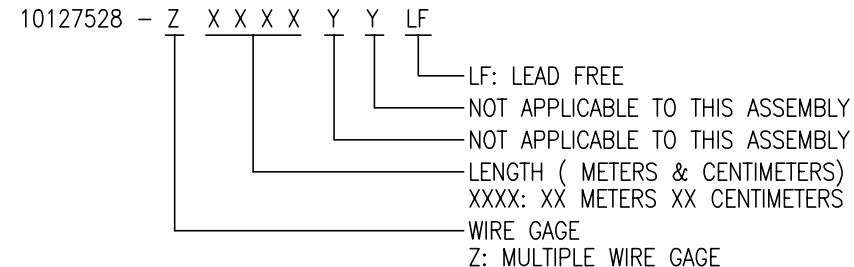
- 1. MATERIAL: SEE BOM ON SHEET 1.
- 2. THIS DIMENSION IS A FINISHED PRODUCT LENGTH.
- 3. ALL CABLE ASSEMBLIES SHALL BE TESTED 100% FOR CONTINUITY AS DEFINED IN WIRING LIST.
- 4. UNLESS OTHERWISE SPECIFIED ALL CABLE ASSEMBLIES SHALL BE TESTD:
 HI-POT: DC 300V/10ms
 DIELECTRIC RESISTANCE: 50M Ohms MIN.
 CONNECTION RESISTANCE: 1.8 Ohms MAX.

5. LABEL SHOULD BE PRINTED WITH BLACK TEXT AS SHOW BELOW:

FCI	---MANUFACTURER CODE OR NAME
10127528-ZXXXXYYLF	---FCI P/N
WWYY	---DATE CODE WWYY FORMAT
MADE IN CHINA	---COUNTRY ORIGIN

- 6. LEAD FREE PRODUCTS MEET EUROPEAN UNION DIRECTIVES AND OTHER COUNTRY REGULATIONS AS DESCRIBED IN GS-22-008.
- 7. PACKAGE: EACH CABLE ASSEMBLY IN CLEAR ZIP-LOCK BPLY BAG, THEN BULK PACKED IN A BOX.
- 8. CONNECTOR ASSEMBLIES SHOWN ARE FOR REFERENCE ONLY AND MAY NOT SHOWN ALL PART DETAIL, REFERENCE CONNECTOR ASSEMBLY DRAWINGS FOR COMPLETE DETAILS.
- 9. USB+POWER MATES WITH FCI P/N:55917-5XXLF.

10. PART NUMBER SCHEME FOR CABLE ASSEMBLY:



Copyright FCI.

spec ref	See Notes			dr	Carl Wang	2015-01-27	projection	MM	size	A3	scale	N/A
tolerance std	TOLERANCES UNLESS OTHERWISE SPECIFIED			eng	Carl Wang	2015-01-27			ecn no			
surface	linear	0.X	±	FCI	title	USB+POWER(12V) TO 2x4 LATCH-N-LDK CABLE ASSEMBLY		product family	rel level	dwg no	10127528	rev
		0.XX	±									
		0.XXX	±									
	angular	0°	±°	www.fci.com	cat. no.	Product - Customer Drw		sheet 2 of 2				