

PCB LAYOUT: COMPONENT SIDE
RECOMENDED PCB THICKNESS: .062/1.57 Max.

NOTES:

- HOSING MATERIAL: GLASS FILLED LIQUID CRYSTAL POLYMER, UL 94V-0, COLOR: BLACK
TERMINAL MATERIAL: HIGH COPPER ALLOY
- FINISH:
OPTION 1: TIN OVER NICKEL OVERALL
OPTION 2: SELECT 15MICROINCH GOLD AND SELECT MATTE TIN OVER NICKEL.
OPTION 3: SELECT 30MICROINCH GOLD AND SELECT MATTE TIN OVER NICKEL.
- PRODUCT SPECIFICATION : 2064600000-PS
- TRAY PACK : 2068320000-PK
TAPE REEL PACK : 2068320001-PK
- MATE WITH RECEPTACLE 206461
- THIS PART CONFORMS TO CLASS 'B' REQUIREMENTS OF COSMETIC SPECIFICATION PS-45499-002.

| DIMENSION UNITS | | SCALE | CURRENT REV DESC: | | |
|--|--|-------|--|-----------------|----------------|
| mm | | 5:1 | molex | | |
| GENERAL TOLERANCES (UNLESS SPECIFIED) | | | V HDR ASSY BANDO MICRO-FIT + SOLUTION | | |
| ANGULAR TOL $\pm 0.5^\circ$ | | | PRODUCT CUSTOMER DRAWING | | |
| 4 PLACES \pm | | | EC NO: 668702 | 2021/03/19 | |
| 3 PLACES \pm | | | DRWN: ZIXUAQ | 2021/07/02 | |
| 2 PLACES ± 0.25 | | | CHK'D: YXZHENG | 2021/07/02 | |
| 1 PLACE ± 0.36 | | | APPR: YXZHENG | 2021/07/02 | |
| 0 PLACES \pm | | | INITIAL REVISION: | | |
| DRAFT WHERE APPLICABLE MUST REMAIN WITHIN DIMENSIONS | | | DRWN: SMAHAJANSHET | 2018/05/08 | |
| THIRD ANGLE PROJECTION | | | APPR: NCSR | 2019/04/02 | |
| DRAWING | | | SERIES | MATERIAL NUMBER | CUSTOMER |
| A3-SIZE | | | 206832 | 2068320000-SD | GENERAL MARKET |
| SHEET NUMBER | | | 1 OF 3 | | |

| TIN PLATING | | | | | |
|-----------------|-----|-------|----|---------------|-----------|
| VRT HDR ASSY PN | CKT | A | B | PK SPEC | NOTE |
| 206832-0201 | 2 | 3.85 | NA | 2068320000-PK | TRAY PACK |
| 206832-0401 | 4 | 6.85 | 3 | | |
| 206832-0601 | 6 | 9.85 | 6 | | |
| 206832-0801 | 8 | 12.85 | 9 | | |
| 206832-1001 | 10 | 15.85 | 12 | | |
| 206832-1201 | 12 | 18.85 | 15 | | |
| 206832-1401 | 14 | 21.85 | 18 | | |
| 206832-1601 | 16 | 24.85 | 21 | | |
| 206832-1801 | 18 | 27.85 | 24 | | |
| 206832-2001 | 20 | 30.85 | 27 | | |
| 206832-2201 | 22 | 33.85 | 30 | | |
| 206832-2401 | 24 | 36.85 | 33 | | |


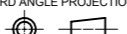
| TIN PLATING | | | | | |
|-----------------|-----|-------|----|---------------|----------------|
| VRT HDR ASSY PN | CKT | A | B | PK SPEC | NOTE |
| 206832-0221 | 2 | 3.85 | NA | 2068320001-PK | TAPE REEL PACK |
| 206832-0421 | 4 | 6.85 | 3 | | |
| 206832-0621 | 6 | 9.85 | 6 | | |
| 206832-0821 | 8 | 12.85 | 9 | | |
| 206832-1021 | 10 | 15.85 | 12 | | |
| 206832-1221 | 12 | 18.85 | 15 | | |
| 206832-1421 | 14 | 21.85 | 18 | | |
| 206832-1621 | 16 | 24.85 | 21 | | |
| 206832-1821 | 18 | 27.85 | 24 | | |
| 206832-2021 | 20 | 30.85 | 27 | | |
| 206832-2221 | 22 | 33.85 | 30 | | |
| 206832-2421 | 24 | 36.85 | 33 | | |

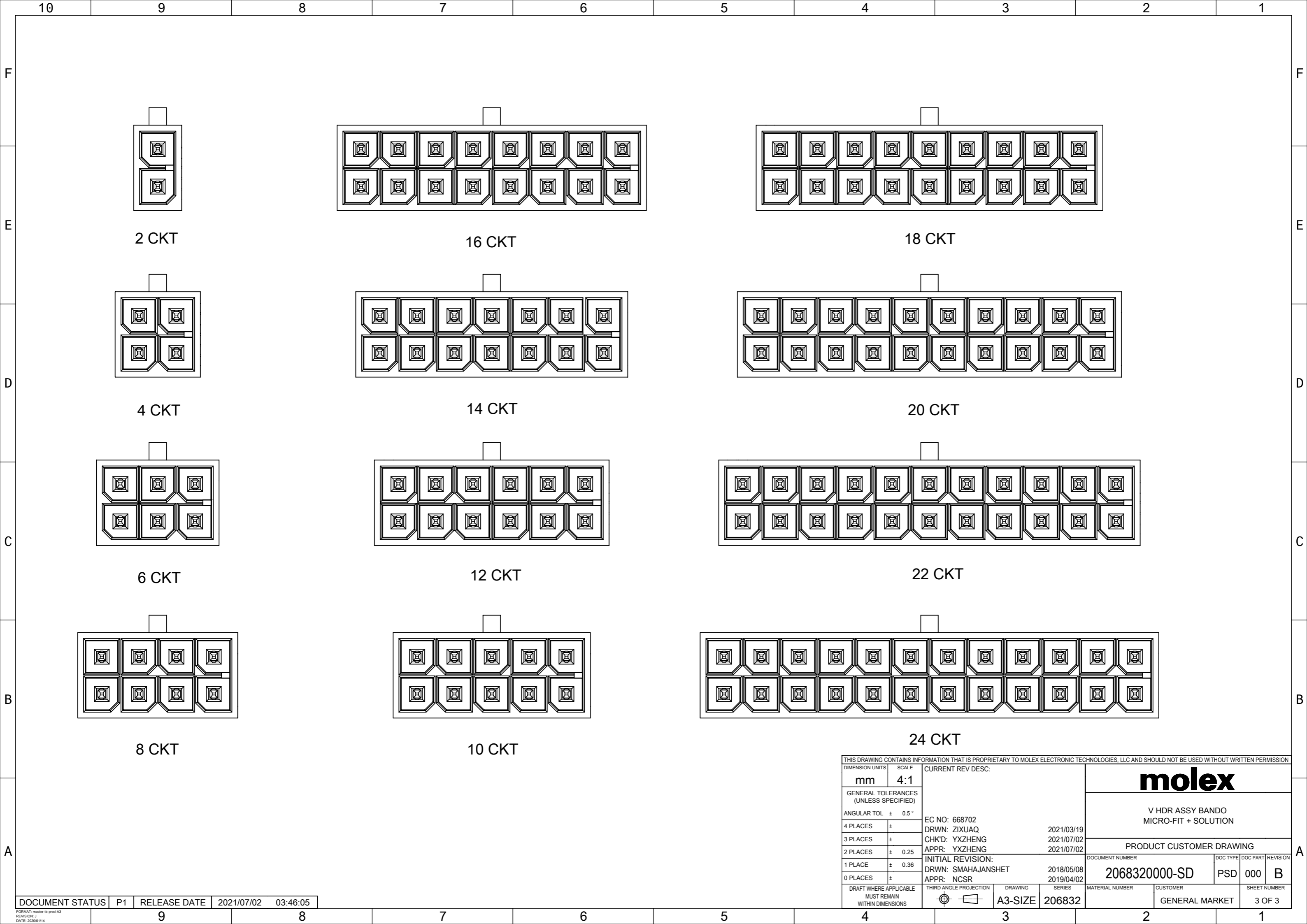
| 15 MICROINCH GOLD | | | | | |
|-------------------|-----|-------|----|---------------|-----------|
| VRT HDR ASSY PN | CKT | A | B | PK SPEC | NOTE |
| 206832-0202 | 2 | 3.85 | NA | 2068320000-PK | TRAY PACK |
| 206832-0402 | 4 | 6.85 | 3 | | |
| 206832-0602 | 6 | 9.85 | 6 | | |
| 206832-0802 | 8 | 12.85 | 9 | | |
| 206832-1002 | 10 | 15.85 | 12 | | |
| 206832-1202 | 12 | 18.85 | 15 | | |
| 206832-1402 | 14 | 21.85 | 18 | | |
| 206832-1602 | 16 | 24.85 | 21 | | |
| 206832-1802 | 18 | 27.85 | 24 | | |
| 206832-2002 | 20 | 30.85 | 27 | | |
| 206832-2202 | 22 | 33.85 | 30 | | |
| 206832-2402 | 24 | 36.85 | 33 | | |

| 15 MICROINCH GOLD | | | | | |
|-------------------|-----|-------|----|---------------|----------------|
| VRT HDR ASSY PN | CKT | A | B | PK SPEC | NOTE |
| 206832-0222 | 2 | 3.85 | NA | 2068320001-PK | TAPE REEL PACK |
| 206832-0422 | 4 | 6.85 | 3 | | |
| 206832-0622 | 6 | 9.85 | 6 | | |
| 206832-0822 | 8 | 12.85 | 9 | | |
| 206832-1022 | 10 | 15.85 | 12 | | |
| 206832-1222 | 12 | 18.85 | 15 | | |
| 206832-1422 | 14 | 21.85 | 18 | | |
| 206832-1622 | 16 | 24.85 | 21 | | |
| 206832-1822 | 18 | 27.85 | 24 | | |
| 206832-2022 | 20 | 30.85 | 27 | | |
| 206832-2222 | 22 | 33.85 | 30 | | |
| 206832-2422 | 24 | 36.85 | 33 | | |

| 30 MICROINCH GOLD | | | | | |
|-------------------|-----|-------|----|---------------|-----------|
| VRT HDR ASSY PN | CKT | A | B | PK SPEC | NOTE |
| 206832-0203 | 2 | 3.85 | NA | 2068320000-PK | TRAY PACK |
| 206832-0403 | 4 | 6.85 | 3 | | |
| 206832-0603 | 6 | 9.85 | 6 | | |
| 206832-0803 | 8 | 12.85 | 9 | | |
| 206832-1003 | 10 | 15.85 | 12 | | |
| 206832-1203 | 12 | 18.85 | 15 | | |
| 206832-1403 | 14 | 21.85 | 18 | | |
| 206832-1603 | 16 | 24.85 | 21 | | |
| 206832-1803 | 18 | 27.85 | 24 | | |
| 206832-2003 | 20 | 30.85 | 27 | | |
| 206832-2203 | 22 | 33.85 | 30 | | |
| 206832-2403 | 24 | 36.85 | 33 | | |

| 30 MICROINCH GOLD | | | | | |
|-------------------|-----|-------|----|---------------|----------------|
| VRT HDR ASSY PN | CKT | A | B | PK SPEC | NOTE |
| 206832-0223 | 2 | 3.85 | NA | 2068320001-PK | TAPE REEL PACK |
| 206832-0423 | 4 | 6.85 | 3 | | |
| 206832-0623 | 6 | 9.85 | 6 | | |
| 206832-0823 | 8 | 12.85 | 9 | | |
| 206832-1023 | 10 | 15.85 | 12 | | |
| 206832-1223 | 12 | 18.85 | 15 | | |
| 206832-1423 | 14 | 21.85 | 18 | | |
| 206832-1623 | 16 | 24.85 | 21 | | |
| 206832-1823 | 18 | 27.85 | 24 | | |
| 206832-2023 | 20 | 30.85 | 27 | | |
| 206832-2223 | 22 | 33.85 | 30 | | |
| 206832-2423 | 24 | 36.85 | 33 | | |

| | | | | | | | | | |
|---|--|---|--|-------------------------------|--|--------|--|---|--|
| THIS DRAWING CONTAINS INFORMATION THAT IS PROPRIETARY TO MOLEX ELECTRONIC TECHNOLOGIES, LLC AND SHOULD NOT BE USED WITHOUT WRITTEN PERMISSION | | | | | | | | | |
| DIMENSION UNITS | | SCALE | | CURRENT REV DESC: | | | |  | |
| mm | | 1:1 | | | | | | | |
| GENERAL TOLERANCES (UNLESS SPECIFIED) | | | | EC NO: 668702 | | | | V HDR ASSY BANDO MICRO-FIT + SOLUTION | |
| ANGULAR TOL ± 0.5° | | | | DRWN: ZIXUAQ 2021/03/19 | | | | | |
| 4 PLACES ± | | | | CHK'D: YXZHENG 2021/07/02 | | | | PRODUCT CUSTOMER DRAWING | |
| 3 PLACES ± | | | | APPR: YXZHENG 2021/07/02 | | | | | |
| 2 PLACES ± 0.25 | | | | INITIAL REVISION: | | | | DOCUMENT NUMBER 2068320000-SD | |
| 1 PLACE ± 0.36 | | | | DRWN: SMAHAJANSKET 2018/05/08 | | | | | |
| 0 PLACES ± | | | | APPR: NCSR 2019/04/02 | | | | DOC TYPE DOC PART REVISION PSD 000 B | |
| DRAFT WHERE APPLICABLE MUST REMAIN WITHIN DIMENSIONS | | THIRD ANGLE PROJECTION | | DRAWING | | SERIES | | SHEET NUMBER | |
| | |  | | A3-SIZE | | 206832 | | 2 OF 3 | |



2 CKT

16 CKT

18 CKT

4 CKT

14 CKT

20 CKT

6 CKT

12 CKT

22 CKT

8 CKT

10 CKT

24 CKT

| | | | | | | | | | | |
|---|--------|--|------------|--|-------------------|--|--|-----------------|----------|----------|
| THIS DRAWING CONTAINS INFORMATION THAT IS PROPRIETARY TO MOLEX ELECTRONIC TECHNOLOGIES, LLC AND SHOULD NOT BE USED WITHOUT WRITTEN PERMISSION | | | | | | | | | | |
| DIMENSION UNITS | SCALE | CURRENT REV DESC: | | | | | | | | |
| mm | 4:1 | <div style="text-align: center;">molex</div> <p>V HDR ASSY BANDO MICRO-FIT + SOLUTION</p> <p>PRODUCT CUSTOMER DRAWING</p> | | | | | | | | |
| GENERAL TOLERANCES (UNLESS SPECIFIED) | | | | | | | | | | |
| ANGULAR TOL | ± 0.5° | | | | | | | | | |
| 4 PLACES | ± | | | | | | | | | |
| 3 PLACES | ± | | | | | | | | | |
| 2 PLACES | ± 0.25 | | | | | | | | | |
| 1 PLACE | ± 0.36 | EC NO: 668702 | 2021/03/19 | | DOCUMENT NUMBER | | | DOC TYPE | DOC PART | REVISION |
| 0 PLACES | ± | DRWN: ZIXUAQ | 2021/07/02 | | 2068320000-SD | | | PSD | 000 | B |
| DRAFT WHERE APPLICABLE MUST REMAIN WITHIN DIMENSIONS | | APPR: YXZHENG | 2021/07/02 | | INITIAL REVISION: | | | MATERIAL NUMBER | | |
| | | DRWN: SMAHAJANSHET | 2018/05/08 | | A3-SIZE | | | CUSTOMER | | |
| | | APPR: NCSR | 2019/04/02 | | SERIES | | | SHEET NUMBER | | |
| | | THIRD ANGLE PROJECTION | DRAWING | | 206832 | | | GENERAL MARKET | | |
| | | | A3-SIZE | | | | | 3 OF 3 | | |