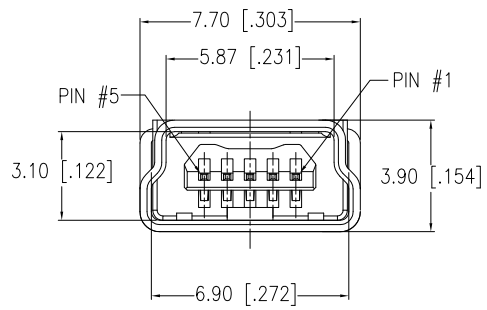
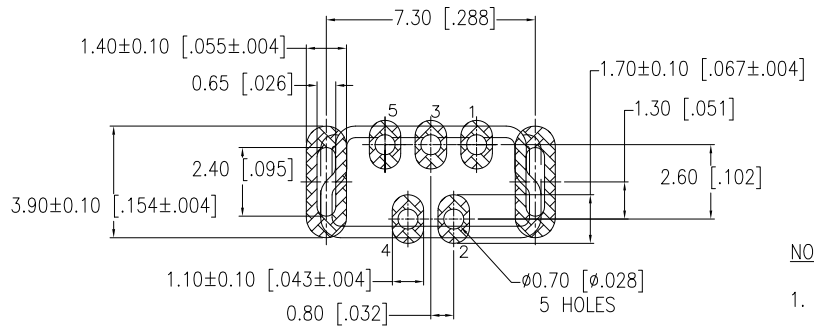


REVISIONS				
SYM	ZONE	ECN, ERN NO.	DATE	APPRD.
B		PRODUCT DWG (EAR 14195)	JUN07/13	K.L.
C		PRODUCT DWG (EAR 14206)	JUN19/13	K.L.



FRONT VIEW



RECOMMENDED P.C.B. LAYOUT  
(COMPONENT SIDE OF BOARD)  
TOLERANCE: ±0.05mm

NOTES:

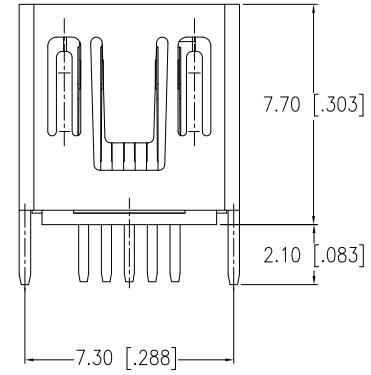
- MATERIALS:**

**HOUSING:** HIGH TEMPERATURE PLASTIC, OR PBT  
FLAMMABILITY UL94V-0.

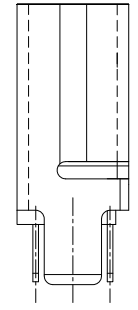
**CONTACTS:** COPPER ALLOY,  
PLATING: GOLD ON MATING AREA (SEE AMPHENOL PART NO. OPTION).  
MATTE TIN OR GOLD FLASH ON CONTACT TAILS.  
NICKEL UNDERPLATE.

**SHELL:** COPPER ALLOY,  
NICKEL.

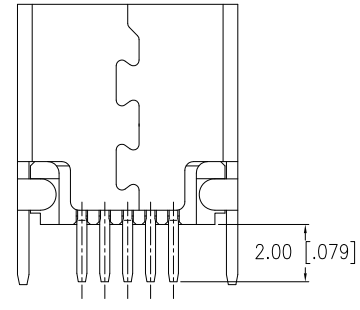
2. OPERATING TEMPERATURE: -40°C TO +105°C



TOP VIEW



SIDE VIEW



BOTTOM VIEW

AMPHENOL PART NO.: UE25 - BEX5 - 10X

SERIES \_\_\_\_\_  
UE25=MINI USB RECEPTACLE

TYPE \_\_\_\_\_  
B=SERIES B

STYLE \_\_\_\_\_  
E=TOP ENTRY

CONTACT PLATING \_\_\_\_\_  
5=30µ" [0.76 MICRONS] GOLD PLATING  
ON CONTACT MATING AREA  
7=GOLD FLASH OVER NICKEL ON CONTACT  
MATING AREA.

MODIFIER  
0=PBT  
H=HIGH TEMP MATERIAL(<260°C)

SHIELD OPTIONS  
0=WITHOUT REAR SHELL

COLOUR  
1=BLACK

NUMBER OF CONTACTS  
5=5 CONTACTS

UNLESS OTHERWISE SPECIFIED TOLERANCES ARE +0.30mm	DRAWN <i>HUILAN WANG</i>	DATE <i>APR 25,08</i>
	DESIGNED <i>MT CHEN</i>	DATE <i>APR 25,08</i>
	CHECKED <i>L.CHAN</i>	DATE <i>APR 25,08</i>
	I. E. APPRD.	
	Q. A. APPRD.	
	DWG. APPRD. <i>K.LAMBIE TBD</i>	
	ENG. REL. NO.	
REF.		
DIMENSIONS ARE IN _____	CODE ID. NO. _____	
MM [INCHES]	03554	

Amphenol Canada Corp.		
TITLE UNIVERSAL SERIAL BUS MINI-B RECEPTACLE, VERTICAL PCB TAIL, ROHS COMPLIANT		
DWG C	DRAWING NO. P-UE25-BEX5-10X	REV. C
SCALE 3/1	WT. _____	SURF. _____
SHEET 1 OF 1		

THIS DOCUMENT CONTAINS PROPRIETARY INFORMATION AND SUCH INFORMATION MAY NOT BE DISCLOSED TO OTHERS FOR ANY PURPOSE OR USED FOR MANUFACTURING PURPOSES WITHOUT WRITTEN PERMISSION FROM AMPHENOL CANADA CORP.