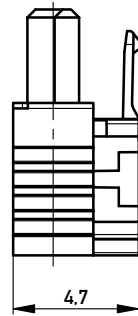
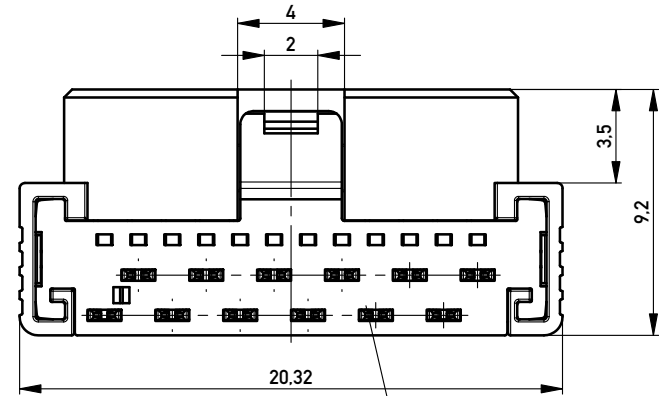
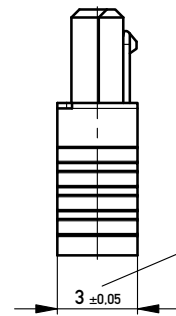


Verpackt in Tray - tray packaging
 Verpackungseinheit 105 Stück - packaging unit 105 pcs

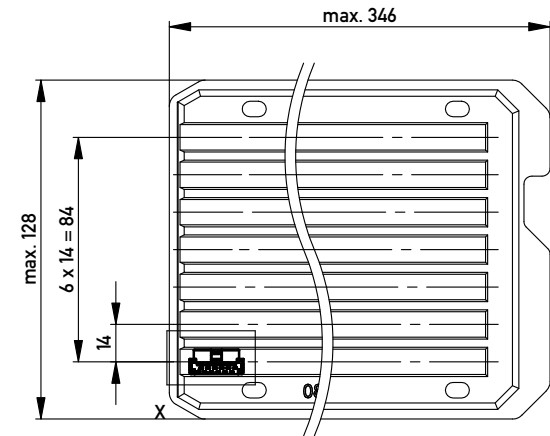


mit aufgesetzter
 Kabelführung
 (Anlieferungszustand)
 with cable guide mounted
 (state at time of supply)

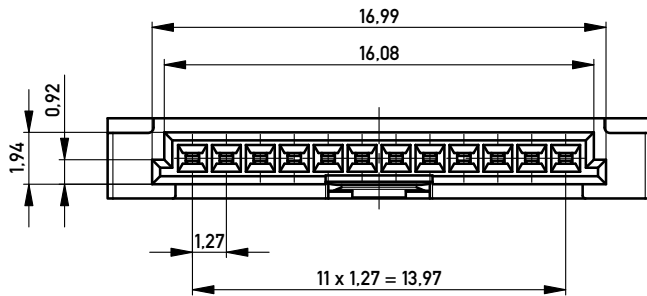
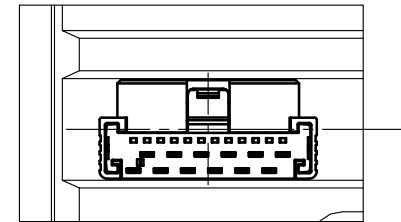


Kabelführung verpresst
 (cable guide pressed on)

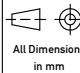

Funktionsrelevantes
 Prüfmerkmal
 siehe Verarbeitungsspezifikation
 MiniBridge ERNI Electronics GmbH



Einzelheit X - detail X
 M 2:1



ohne Hilfsmittel lösbar
 without tool unlockable

Information:	Tolerances	 All Dimensions in mm	Scale	5:1
	All rights reserved. Only for Information. To ensure that this is the latest version of this drawing, please contact one of the ERNI companies before using.		Designation F 1.27 SRC A IDC 12-pin d=1.07 AWG 24/26 Friction Lock	
Subject to modification without prior notice. Drawing will not be updated.		 www.ERNI.com	234487	
b	19.05.2015		Class SRCA	
Index	Date	I A3		

Copyright by ERNI GmbH.
 Proprietary notice pursuant to ISO 9006 to be observed.