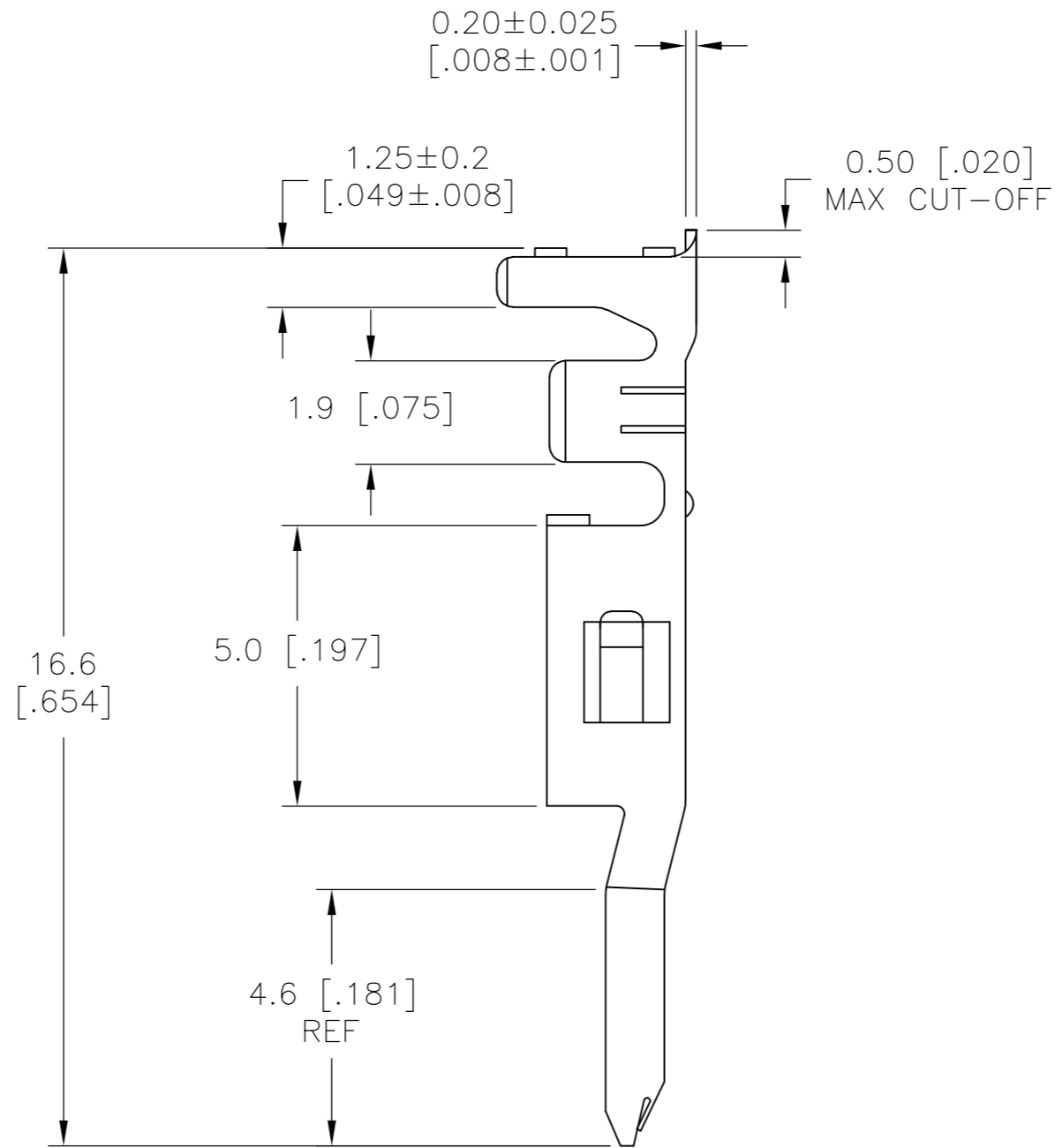
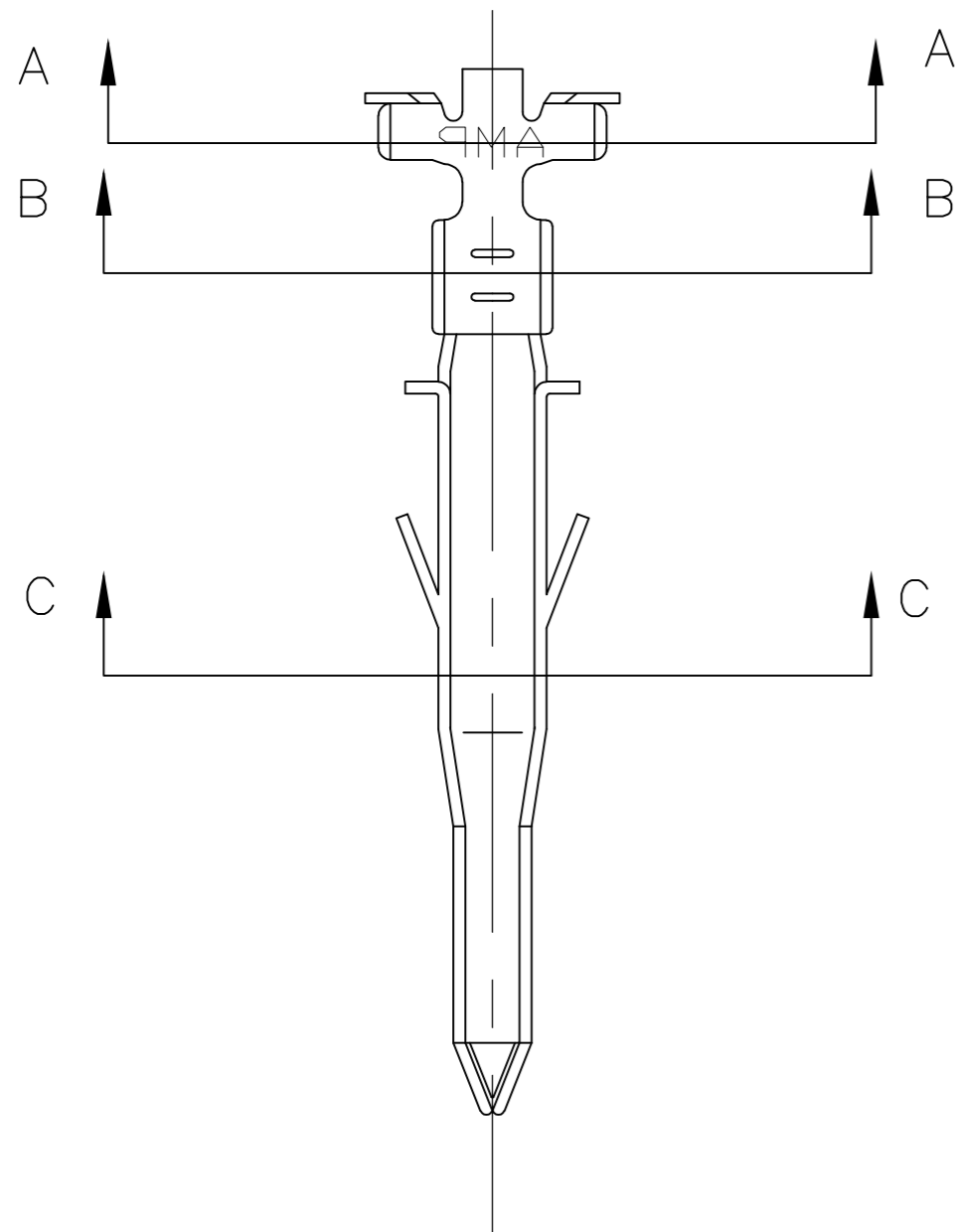
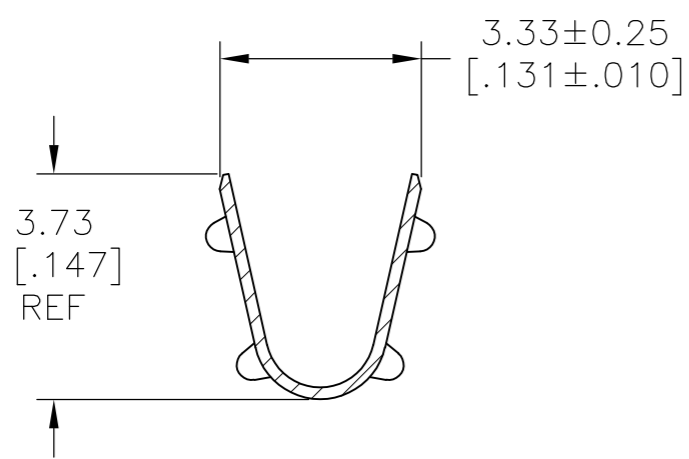


THIS DRAWING IS UNPUBLISHED. RELEASED FOR PUBLICATION  
 © COPYRIGHT - By - ALL RIGHTS RESERVED.

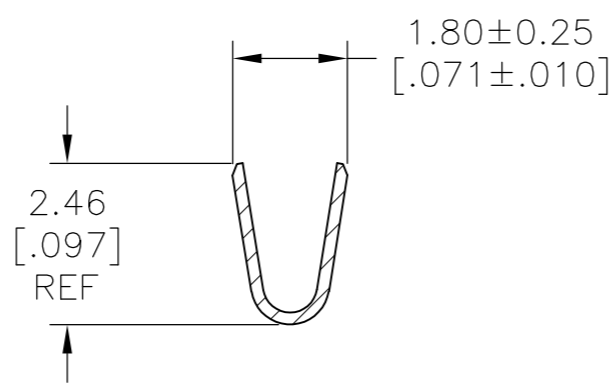
| REVISIONS |     |                |           |     |      |
|-----------|-----|----------------|-----------|-----|------|
| P         | LTR | DESCRIPTION    | DATE      | DWN | APVD |
| A         |     | FIRST RELEASED | 15AUG2017 | WH  | DZ   |



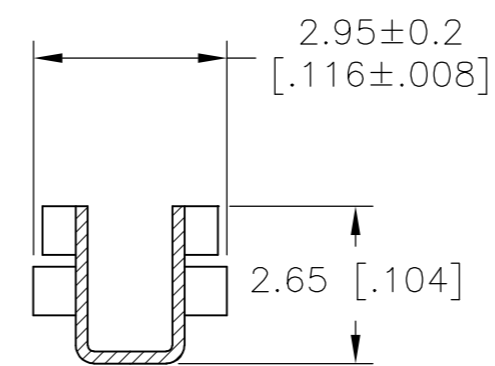
- 1 WIRE RANGE 0.3-0.82mm<sup>2</sup> [22-18 AWG]
- 2 INSULATION RANGE: DIA 1.50-3.10 mm [.060-.122 in]
- 3 FINISH: 2.54µm [.0001 in] MINIMUM PRE-TIN ALL OVER.
- 4 MATING PART: 2825211-1(STRIPE TYPE) OR 2825213-1(LOOSE TYPE)



SECTION A-A



SECTION B-B



SECTION C-C

|                       |                               |           |
|-----------------------|-------------------------------|-----------|
| PRE-TIN $\triangle$ 3 | HIGH PERFORMANCE COPPER ALLOY | 2825212-1 |
| FINISH                | MATERIAL                      | PART NO.  |

|  |  |                                   |   |           |
|--|--|-----------------------------------|---|-----------|
| THIS DRAWING IS A CONTROLLED DOCUMENT. |  | DWN<br>WARREN HUO<br>15AUG2017    | TE Connectivity                             |           |
| DIMENSIONS:<br>mm [INCHES]             |  | CHK<br>DANIEL ZHANG<br>15AUG2017  | NAME  |           |
| TOLERANCES UNLESS OTHERWISE SPECIFIED: |  | APVD<br>DANIEL ZHANG<br>15AUG2017 | PIN TERMINAL,<br>VAL-U-LOK HCS, LOOSE PIECE |           |
| 0 PLC ± -                              |  | PRODUCT SPEC                      | RESTRICTED TO                               |           |
| 1 PLC ± 0.25 [.010]                    |  | 108-150000                        | -   |           |
| 2 PLC ± 0.13 [.005]                    |  | APPLICATION SPEC                  | SIZE  | CAGE CODE |
| 3 PLC ± -                              |  | 114-13172                         | A2  | 00779     |
| 4 PLC ± -                              |  | WEIGHT                            | DRAWING NO                                  |           |
| ANGLES ± -                             |  | 0                                 | C=2825212                                   |           |
| FINISH                                 |  | SCALE                             |   | SHEET     |
| SEE TABLE                              |  | N/A                               |   | 1 of 1    |
| CUSTOMER DRAWING                       |  | REV                               |   | A         |