

THIS DRAWING IS UNPUBLISHED. RELEASED FOR PUBLICATION

PART NUMBER	REV	TERMINATOR	FEED TYPE	DESCRIPTION
1528629-1	B	LEADMAKER	MECH POST FEED	CUTS CARRIER
1528629-2	B	BENCH	MECH PRE FEED	CUTS CARRIER
1528629-6	B	LEADMAKER	MECH POST FEED	CONTINUOUS CARRIER
7-1528629-1	B	LEADMAKER	MECH POST FEED	-1 AND SPARE PARTS
7-1528629-2	B	BENCH	MECH PRE FEED	-2 AND SPARE PARTS
7-1528629-6	B	LEADMAKER	MECH POST FEED	-6 AND SPARE PARTS
7-1528629-7	A	-	-	SPARE PARTS KIT

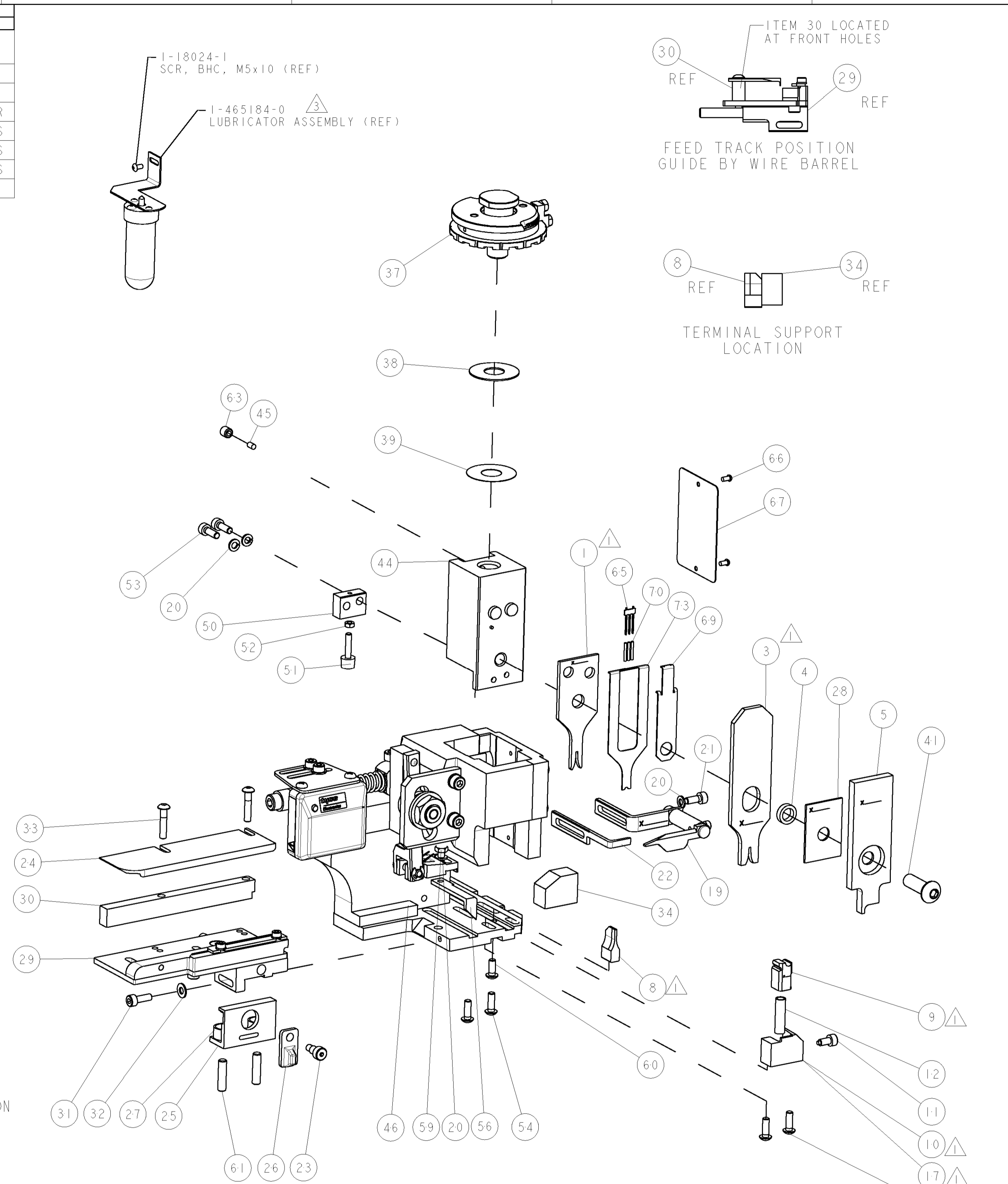
CRIMP	SIZE	TYPE	RANGE
WIRE	1.27 [0.050 IN]	F	0.30-0.50mm ²
INSUL	1.40 [0.055 IN]	F	1.10-1.40 [0.043-.055 IN]

WIRE STRIP LENGTH	APPL INSTRUCTIONS
4.00-4.50 [1.57-.177 IN]	408-8322 & 408-8490

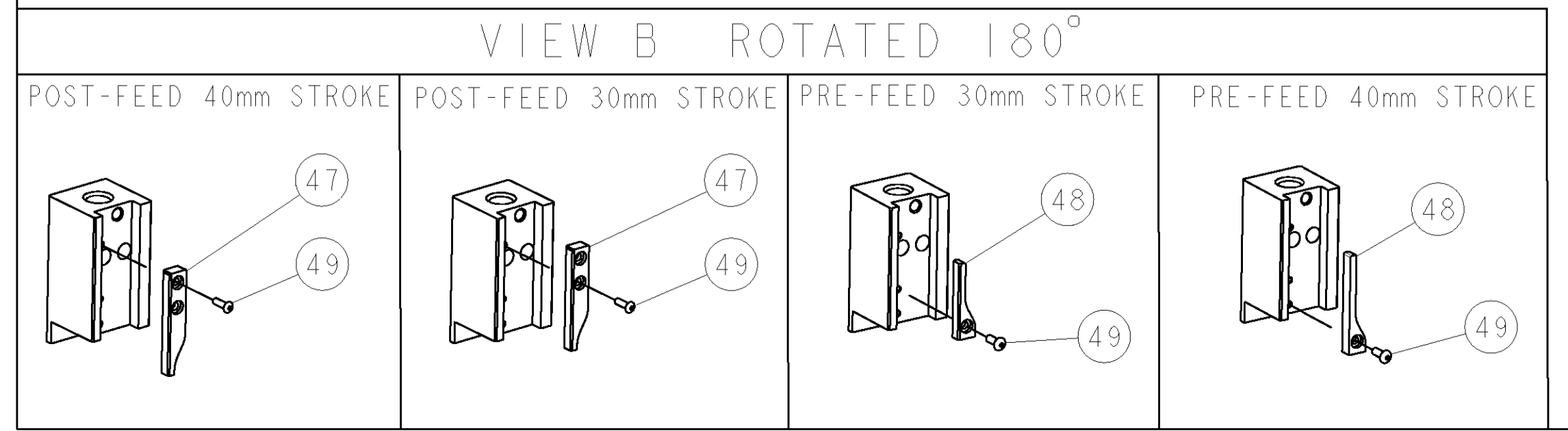
TERMINAL APPL SPEC	FEED
72WT102284-1	8.13 [0.320 IN]

TYCO TERM PN	MANUF TERM PN	-	-
1572838-1	7116-1670-02	-	-

WIRE SIZE	CRIMP HEIGHT	REF SETTING
0.50mm ²	1.00 ±0.03 [0.039 ±0.001 IN]	B3
0.35mm ²	0.92 ±0.03 [0.036 ±0.001 IN]	C0
0.30mm ²	0.92 ±0.03 [0.036 ±0.001 IN]	C0



* **WARNING**
ON INSTALLATION, SET WIRE DISC TO LARGEST WIRE SIZE SETTING. USE OF SETTINGS BELOW MIN. REQUIRED CRIMP HEIGHT SETTING WILL CAUSE DAMAGE TO CRIMP TOOLING.



-77	-76	-72	-71	-6	-2	-1	PART NO	DESCRIPTION	ITEM NO
-	-	-	-	-	-	-			84
-	-	-	-	-	-	-			83
-	-	-	-	-	-	-			82
-	-	-	-	-	-	-			81
-	-	-	-	-	-	-			80
-	-	-	-	-	-	-			79
-	-	-	-	-	-	-			78
-	-	-	-	-	-	-			77
-	-	-	-	-	-	-			76
-	-	-	-	-	-	-			75
-	-	-	-	-	-	-			74

SET UP GAGE		REVISONS			
LOC	DIST	REV	DATE	BY	APPV
A	66				
		A	SEE ECO-06-010334	02MAY2006	DP MC
		B	SEE ECR-06-022242	18SEP2006	MC MC

ITEM NO	PART NO	DESCRIPTION	ITEM NO
73	1490525-3	DEPRESSOR, WIRE	73
72	-	-	72
71	1338705-3	DOCUMENTATION PACKAGE	71
70	2-23147-2	SPRING, COMPRESSION	70
69	1490524-1	DEPRESSOR, SPACER	69
68	-	-	68
67	461264-5	PLATE, IDENTIFICATION	67
66	21017-2	SCREW, DRIVE	66
65	1424350-1	HOLDER, PIN, WIRED	65
64	-	-	64
63	3-18031-0	SCR, SET, CUP POINT M6 X 6.0	63
62	-	-	62
61	2-18032-5	SCR, SET, FLT POINT M5 X 20.0	61
60	18024-7	SCR, BTN SKT HD CAP (M4 X 10.0)	60
59	5-18022-2	SCR, HEX HD CAP M4 X 8.0	59
58	-	-	58
57	-	-	57
56	1338685-1	PAWL, FEED	56
55	-	-	55
54	18024-8	SCR, BTN SKT HD CAP (M4 X 12.0)	54
53	1-18023-2	SCR, SKT HD CAP M4 X 12.0	53
52	18030-1	NUT, HEX, REG M3	52
51	811242-5	BUMPER, HOLD DOWN	51
50	690753-2	SPACER, TONKER	50
49	18024-3	SCR, BTN SKT HD CAP (M3 X 10.0)	49
48	1338675-1	CAM, UNIVERSAL PRE FEED	48
47	1338676-1	CAM, UNIVERSAL POST-FEED	47
46	1320999-3	APPLICATOR SUBASSEMBLY, HDI	46
45	690191-1	PLUG, NYLON	45
44	1338660-1	RAM	44
43	-	-	43
42	-	-	42
41	2-18024-6	SCR, BTN SKT HD CAP (M8 X 25.0)	41
40	-	-	40
39	690125-1	SHIM SUB-ASSY	39
38	469367-8	SHIM	38
37	879103-2	FINE ADJUST HEAD SUBASSY	37
36	-	-	36
35	-	-	35
34	1320934-3	SUPPORT, TERMINAL	34
33	1-18024-0	SCR, BTN SKT HD CAP (M4 X 20.0)	33
32	18027-2	WASHER, FLAT, REG M4	32
31	1-18023-2	SCR, SKT HD CAP M4 X 12.0	31
30	1320908-4	SPACER, STRIP GUIDE	30
29	1633073-1	STRIP GUIDE ASSEMBLY	29
28	1-455888-0	SPACER, CRIMPER	28
27	1-22284-0	SPRING, COMPRESSION	27
26	356835-1	LEVER, DRAG RELEASE	26
25	240792-1	DRAG, TERMINAL	25
24	1320928-1	PLATE, STRIP GUIDE	24
23	980371-4	SCR, SKT HD SHLDR 5.0 DIA X 6.0	23
22	690472-2	STRIPPER	22
21	1-18023-1	SCR, SKT HD CAP M4 X 10.0	21
20	18025-2	WASHER, SPRG LOCK, REG M4	20
19	1424364-1	STRIPPER/ WIRE STOP ASSY	19
18	-	-	18
17	1338684-1	HOLDER, SHEAR, NO-CUT	17
16	-	-	16
15	-	-	15
14	-	-	14
13	-	-	13
12	3-22280-3	SPRING, COMPRESSION	12
11	356885-4	STOP, SHEAR	11
10	1320921-1	SHEAR HOLDER, FRONT, CUT	10
9	462006-1	FLOATING SHEAR, FRONT	9
8	1633139-5	ANVIL, COMBINATION	8
7	-	-	7
6	-	-	6
5	2-455889-0	DEPRESSOR, SHEAR	5
4	3-238011-8	BLOCK, CRIMPER SPACER	4
3	7-1424909-2	CRIMPER, INSULATION F	3
2	-	-	2
1	5-568176-3	CRIMPER, WIRE	1

DIMENSIONS: mm [IN]		TOLERANCES UNLESS OTHERWISE SPECIFIED:	
0 PLC	±	0.25	±
1 PLC	±	0.15	±
2 PLC	±	0.10	±
3 PLC	±	0.07	±
4 PLC	±	0.05	±
ANGLES	±	0.5	°

DATE	02-May-06	DESIGNED BY	W. CLIFFORD
APPV	02-May-06	NAME	W. CLIFFORD
PRODUCT SPEC		APPLICATION SPEC	See Table
WEIGHT		CUSTOMER DRAWING	

TYCO	Electronic
Tyco Electronics Harrisburg, PA 17105-3608	
FINE ADJUST SIDE FEED HDI APPLICATOR	
SIZE	A1
CAGE CODE	00779
DRAWING NO	C=1528629
RESTRICTED TO	