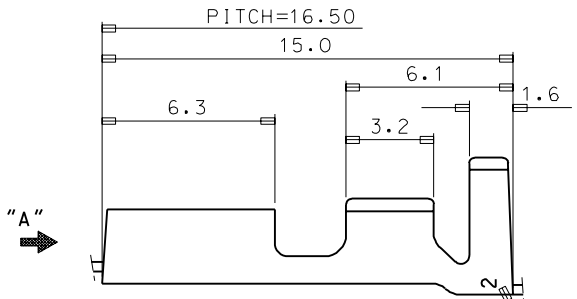
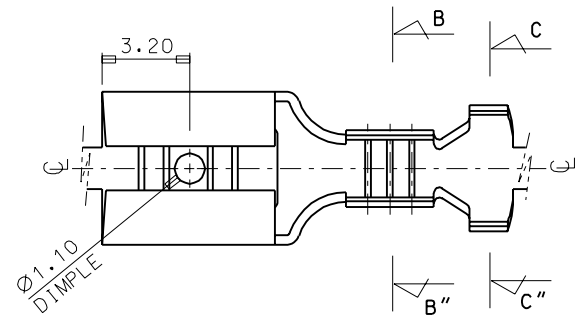
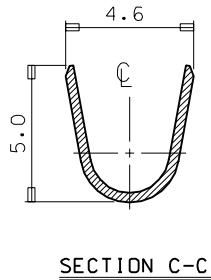
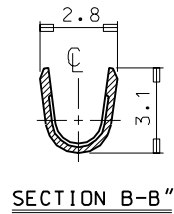
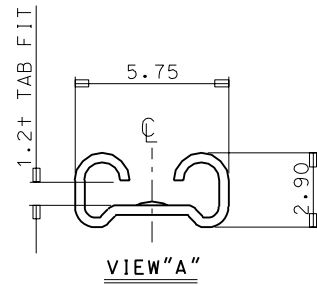


PROJECT NO. EDP NO. SIMILAR ITEM ENG. NO. SD 35718-11\*0



TRADE MARK  
(MK2)



- NOTES
1. MATERIAL: BRASS , 0.35THICKNESS
  2. FINISH: 35718-1100:UNPLATED  
35718-1110:POST-TIN PLATED

WIRE RANGE AWG #20-#16 (0.52-1.31mm <sup>2</sup> )				MATERIAL	SEE NOTES	MOLEX-KOREA CO.,LTD.	
	INSULATION RANGE Ø2.6-3.5				GENERAL TOLERANCE DIMENSION : 1p1cs:±0.30 ANGLE : 2p1cs:±0.20		DRAWN BY W. Y. YANG
DIE FEED: <del>---</del>	B	REVISED	95-007	95.1.17	DIMENSION CLASSIFICATION ▽ : CRITICAL ▼ : MAJOR ( ) : REFERENCE	APP'D BY	SCALE 6:1
APPLICATOR FEED: 16.5	A	CAD REDRAWING	93-011	93.5.24	ASS'Y PART	TITLE: .187 SLIP-ON REC'	
O'TY/ REEL OR PACK 7,000 O'ty/Reel	LTR	REVISION RECORD	ECN	DATE	DESCRIPTION	ENG. NO. SD 35718-11*0	SHEET 1 of 1 REV B
REVISE ONLY ON CAD SYSTEM					<del>---</del>	<del>---</del>	