

4

3

2

1

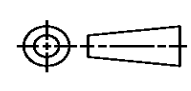
THIS DRAWING IS UNPUBLISHED. RELEASED FOR PUBLICATION
 © COPYRIGHT ALL RIGHTS RESERVED.

LOC	DIST	REVISIONS			
P	LTR	DESCRIPTION	DATE	DWN	APVD
	T1	ECR-14-002309	14FEB2014	GK	HMR

REPLACED BY OCEAN STYLE APPLICATOR PART NUMBER 2151488-1

FOR REPLACEMENT PARTS FOR APPLICATOR 567297
 REFER TO ADDITIONAL PAGE(S). SPARE PARTS KIT (IF LISTED)
 WILL REMAIN AVAILABLE.

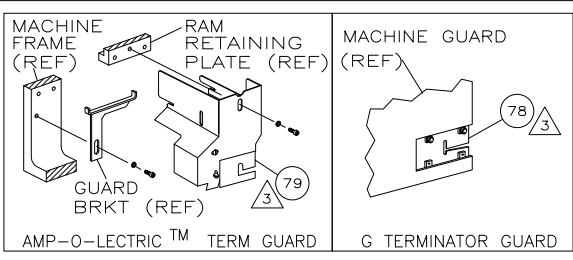
THE REPLACEMENT OCEAN STYLE APPLICATOR HAS THE
 SAME TERMINATOR/PRESS INTERFACE AS APPLICATOR
 567297

THIS DRAWING IS A CONTROLLED DOCUMENT.		DWN	GOPALAKRISHNA HV		
DIMENSIONS:		CHK	RAGHAVENDRA		
		APVD	RAGHAVENDRA		
TOLERANCES UNLESS OTHERWISE SPECIFIED:		PRODUCT SPEC	NAME		
0 PLC	±	APPLICATION SPEC	SIDE FEED HDM APPLICATOR		
1 PLC	±		SIZE	CAGE CODE	DRAWING NO
2 PLC	±		A3		©- 567297
3 PLC	±				RESTRICTED TO
4 PLC	±				
ANGLES	±	WEIGHT			
MATERIAL	FINISH	CUSTOMER ACCESSIBLE PRODUCTION DRAWING		SCALE	SHEET 1 OF 2
					REV T1



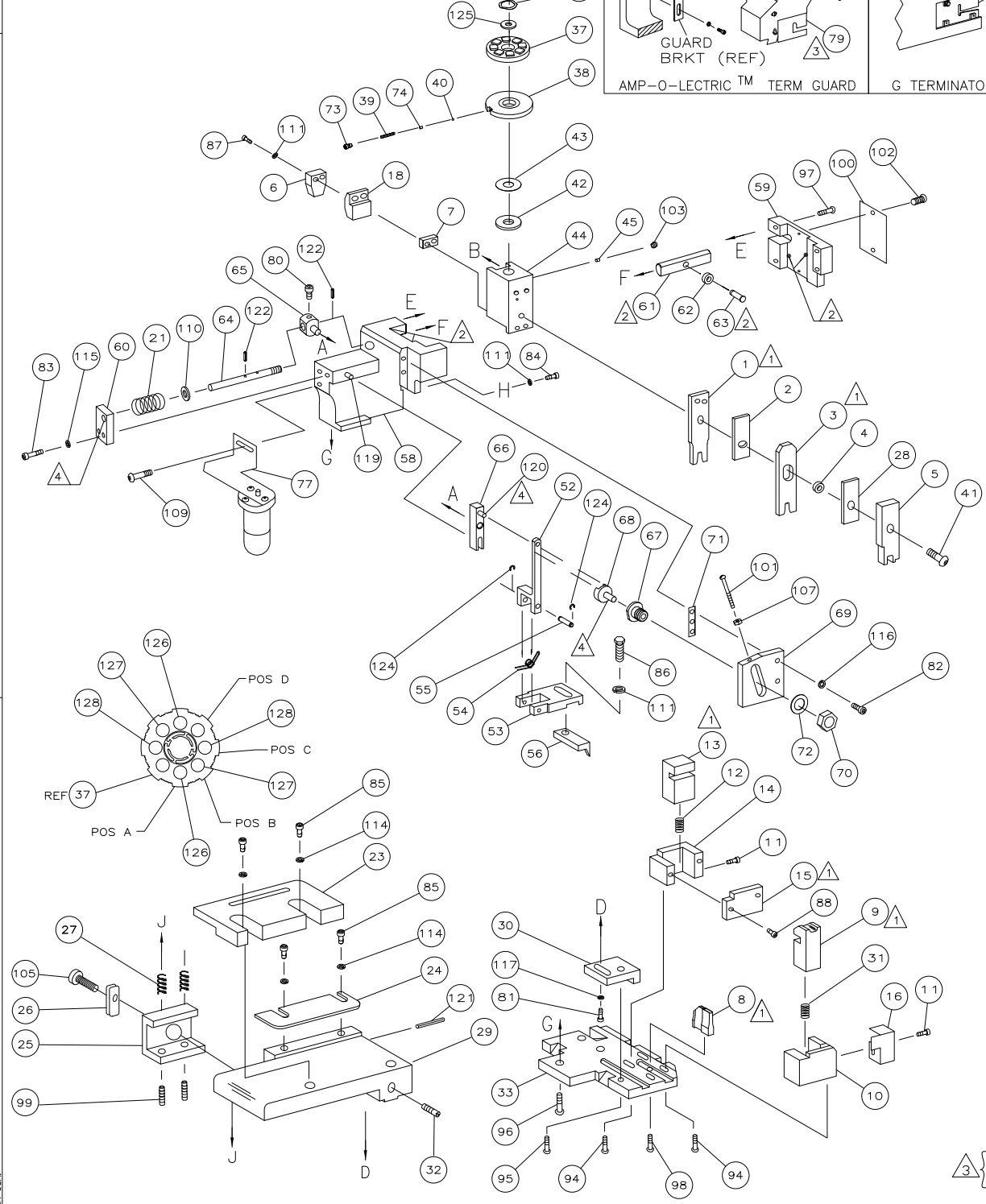
THIS DRAWING IS A CONTROLLED DOCUMENT.

PART NUMBER	REV	FIRST USED
567297-1	T	122500-1
567297-2	T	565435-5
567297-3	T	354500-1
7-567297-7	L	-



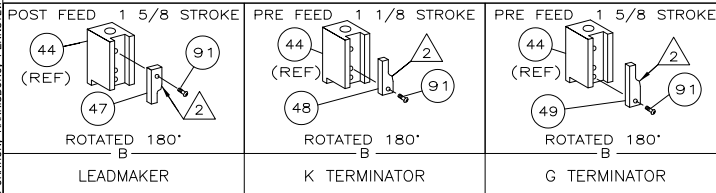
TERMINAL NAME: CRIMP SNAP-IN RECEPTACLE CONTACT		104480	
CRIMPING DATA			
PAD LTR	CRIMP HEIGHT	WIRE SIZE	
A	.036 ±.002 [0.91 ±.05mm]	22	
B	.032 ±.002 [0.81 ±.05mm]	24	
C	.030 ±.002 [0.76 ±.05mm]	26	
D	NOT	USED	
CRIMP	SIZE	TYPE	RANGE
WIRE	.042 [1.07mm]	F	26-22
INSUL	.062 [1.57mm]	0	.025-.060
WIRE STRIP LENGTH	TERM APPL SPEC	FEED	APPL INSTRUCTION
.125-.156	114-25038	.250	408-8040
			SET UP GAGE LAYOUT 458637-1 L1316

USED ON	
-1	LEADMAKER MECH POST FEED -77 SPARE TOOLING KIT
-2	BENCH MODEL K MECH PRE FEED
-3	BENCH MODEL G MECH PRE FEED

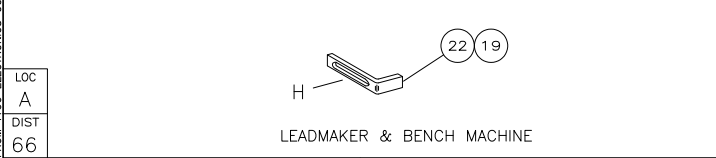


QTY REQD PER ASSY	PART NO	DESCRIPTION	ITEM NO		
- 2	2	5-354779-2	PIN, WIRE DISC (.3250)C	129	
- 2	2	4-354779-8	PIN, WIRE DISC (.3230)B	127	
- 2	2	4-354779-2	PIN, WIRE DISC (.3200)A	126	
- 1	1	986950-1	WASHER, FLAT PRECISION	125	
- REF	REF	21045-3	RING,RET "C"(Ø.187)FD FING PIN	124	
- REF	REF	5-21028-1	PIN,SLT SPR(Ø.125x.50)ADJ ROD	122	
- 1	1	4-21028-0	PIN,SLT SPR(Ø.093x.75)ST GDE PL	121	
- REF	REF	1-21030-1	PIN,DOWEL(Ø.187x.50)LEVER	120	
- REF	REF	1-21030-6	PIN,DOWEL(Ø.187x1.25)HOUSING	119	
- 1	1	21024-5	WASHER,LOCK(#10)ADJ BLOCK	117	
- REF	REF	21024-5	WASHER,LOCK(#10)ADJ PLATE	116	
- REF	REF	21024-5	WASHER,LOCK(#10)FEED GDE ROD	115	
- 4	4	21024-2	WASHER,LOCK(#4)FRONT STP GUIDE	114	
- 4	4	21024-4	WASHER,LOCK(#8)STRIPPER	111	
- REF	REF	21899-4	WASHER,FLAT(Ø5/16)SCREW ADJ	110	
- 1	1	2-21002-6	SCR,BHC(10-32x.38)LUBE ASSY	109	
- REF	REF	21018-5	NUT,HEX(6-32)FEED ADJ	107	
- 1	1	22353-8	SCR,SHLD(Ø.187x.25)DRAG LEVER	105	
- 1	1	21009-2	SCR,SKT SET(1/4-20x.25 LW)RAM	103	
- 2	2	21017-2	SCR,DRIVE(#2x.19)ID PLATE	102	
- REF	REF	6-23715-5	SCR,PAN HD(6-32x1.50)FEED ADJ	101	
- 1	1	461264-1	PLATE, IDENTIFICATION	100	
- 2	2	5-21006-6	SCR,SET,10-32 X .75	99	
- 1	1	22733-8	SCR,BHC(8-32x.38 LW)ANVIL	98	
- REF	REF	2-21002-9	SCR,BHC(10-32x.75)CAP	97	
- REF	REF	2-22733-8	SCR,BHC(1/4-20x.62)HOUSING	96	
- REF	REF	2-21002-7	SCR,BHC(10-32x.50)SG ADJ BLOCK	95	
- 4	4	2-21002-2	SCR,BHC(8-32x.50)TERM H DWN	94	
- 1	1	1-21002-7	SCR,BHC(6-32x.38)CAM	91	
- 2	2	1-21000-8	SCR,SHC(6-32x.25)R SHEAR PLATE	88	
- 2	2	2-21000-8	SCR,SHC(8-32x.62)DEP-HOLD	87	
- 1	1	2-22603-0	SCR,HEX HD(8-32x.31)FEED FINGER	86	
- 4	4	1-21000-3	SCR,SHC(4-40x.25)F ST GUIDE	85	
- 1	1	2-21000-7	SCR,SHC(8-32x.50)STRIPPER	84	
- REF	REF	3-21000-7	SCR,SHC(10-32x.75)FEED ROD GD	83	
- REF	REF	3-21000-6	SCR,SHC(10-32x.62)FD ADJ BLK	82	
- 1	1	3-21000-4	SCR,SHC(10-32x.38)SG ADJ BL	81	
- REF	REF	3-21000-4	SCR,SHC(10-32x.38)PIVOT BLK	80	
- REF	REF	455749-1	GUARD, WINDOW	79	
- REF	REF	679532-1	INSERT, GUARD	78	
- 1	1	1-465184-0	LUBRICATOR ASSY	77	
- 1	1	690603-1	SPRING, ASSIST	74	
- 1	1	23030-1	SCR,SHC(6-32x.25 SL)INS DISC	73	
- REF	REF	458109-1	WASHER, SPECIAL	72	
- REF	REF	690517-1	SPACER	71	
-77	-3	-2	-1	U/M	

QTY REQD PER ASSY	PART NO	DESCRIPTION	ITEM NO		
- 1	1	694433-7	PAWL, FEED	56	
- REF	REF	240624-1	PIN, FEED FINGER	55	
- REF	REF	691499-1	SPRING, FEED FINGER	54	
- REF	REF	690541-1	HOLDER, FEED FINGER	53	
- REF	REF	455679-1	LEVER, TERMINAL FEED ARM	52	
- 1	1	690602-6	CAM, PRE-FEED 1 5/8 ST	49	
- 1	1	690602-5	CAM, PRE-FEED 1 1/8 ST	48	
- 1	1	690501-4	CAM, POST-FEED 1 5/8 ST	47	
- 1	1	459456-1	APPLICATOR, BASIC (SUBASSY)	46	
- 1	1	690191-1	PLUG, NYLON	45	
- 1	1	455673-1	RAM	44	
- 1	1	690125-1	WASHER, LAMINATED	43	
- 1	1	690124-1	WASHER, RAM	42	
- 1	1	7-21002-9	BOLT, CRIMPER(5/16x1.00)	41	
- 1	1	23241-6	BALL, STEEL	40	
- 1	1	690170-1	SPRING, COMPRESSION	39	
- 1	1	690142-1	DISC, INSULATION	38	
- 1	1	354777-1	WIRE DISC	37	
- 1	1	22480-5	WASHER, SPRING	36	
- 1	1	690212-1	POST, RAM	35	
- REF	REF	455675-1	PLATE, BASE	33	
- 1	1	690432-3	SCREW, ADJUSTMENT	32	
- 1	1	6-22279-3	SPRING,SHEAR (FRONT)	31	
- REF	REF	455689-1	BLOCK, STRIP GUIDE ADJ	30	
- 1	1	844048-1	PLATE, STRIP GUIDE	29	
- 1	1	455888-8	SPACER, FRONT SHEAR DEP	28	
- 2	2	1-22284-0	SPRING, DRAG	27	
- 1	1	356835-1	LEVER, DRAG RELEASE	26	
- 1	1	240792-1	DRAG, TERMINAL	25	
- 1	1	690438-1	GUIDE, STRIP (REAR)	24	
- 1	1	690487-1	GUIDE, STRIP (FRONT)	23	
- 1	1	690472-2	STRIPPER	22	
- REF	REF	4-22284-9	SPRING, FEED RETURN	21	
- 1	1	691353-1	STRIPPER	19	
- 1	1	2-690518-4	HOLDER, TERMINAL	18	
- 1	1	691667-1	GUARD, CHIP, FRONT	16	
- 1	1	1-690691-3	PLATE, SHEAR (REAR)	15	
- 1	1	690462-1	HOLDER, SHEAR (REAR)	14	
- 1	1	690463-1	SHEAR, FLOAT (REAR)	13	
- 1	1	3-22280-3	SPRING, SHEAR	12	
- 2	2	690461-1	STOP, SHEAR	11	
- 1	1	468798-1	HOLDER, SHEAR (FRONT)	10	
- 1	1	462006-3	SHEAR, FLOAT (FRONT)	9	
1	1	904132-6	ANVIL	8	
- 1	1	240641-1	SPACER, DEPRESSOR (REAR)	7	
- 1	1	690468-2	DEPRESSOR, SHEAR (REAR)	6	
- 1	1	1-455889-4	DEPRESSOR, SHEAR (FRONT)	5	
- 1	1	238011-7	SPACER, BLOCK CRIMPER	4	
1	1	8-456135-3	CRIMPER, INSULATION	3	
- 1	1	455888-6	SPACER, CRIMPER	2	
1	1	456401-3	CRIMPER, WIRE	1	
-77	-3	-2	-1	U/M	



- 1 RECOMMENDED SPARE PARTS.
- 2 GREASE LIGHTLY.
- 3 GUARD MUST BE IN PLACE WHEN OPERATING APPLICATOR IN A BENCH MACHINE.
- 4 LUBRICATE DAILY USING NO. 20 MACHINE OIL.
- 5. ITEMS WITH QTY OF REF SPECIFIED (EXCEPT ITEMS 78 AND 79) ARE USED ON ITEM 46.



LOC A
DIST 66

REVISION RECORD	DATE	BY	TE
T ECR-09-027431	12-2009	MY	TE

DIMENSIONS: INCHES
 TOLERANCES UNLESS OTHERWISE SPECIFIED:
 0 PLC ±.005
 1 PLC ±.002
 2 PLC ±.001
 3 PLC ±.0005
 4 PLC ±.0002

SCALE: SIZE A1 DRAWING NO: 567297 SHEET 1 OF 1 REV T

DATE: 11-15-95 MATERIAL: HEAT TREAT: D.SALTZER
 DATE: 11-16-95 CHK: C.ERISMAN
 DATE: 11-16-95 APD: T.BEDDICK
 NAME: Tyco Electronics Corporation
 Tyco Electronics Corporation
 Harrisburg, PA 17105-3608

SIDE FEED HDM APPLICATOR