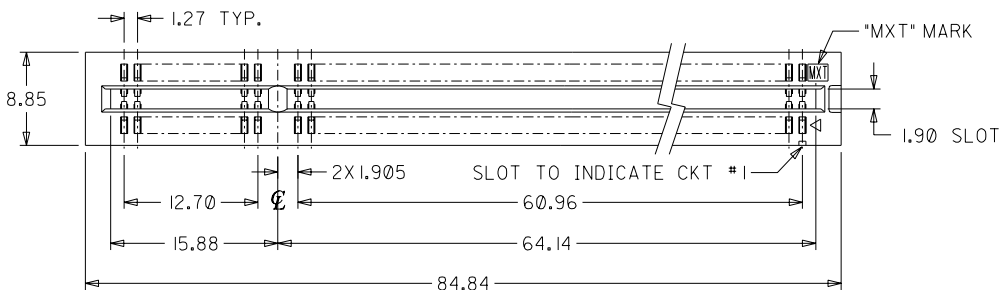
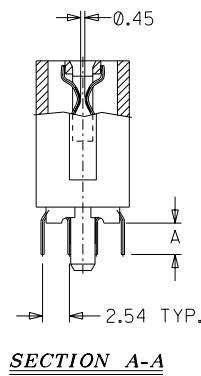
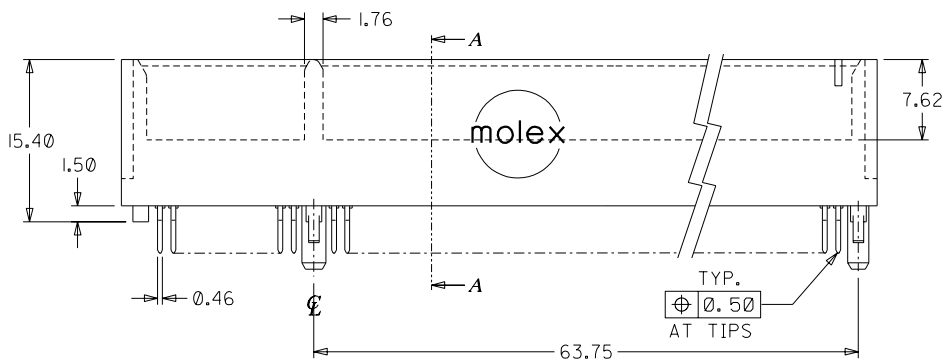


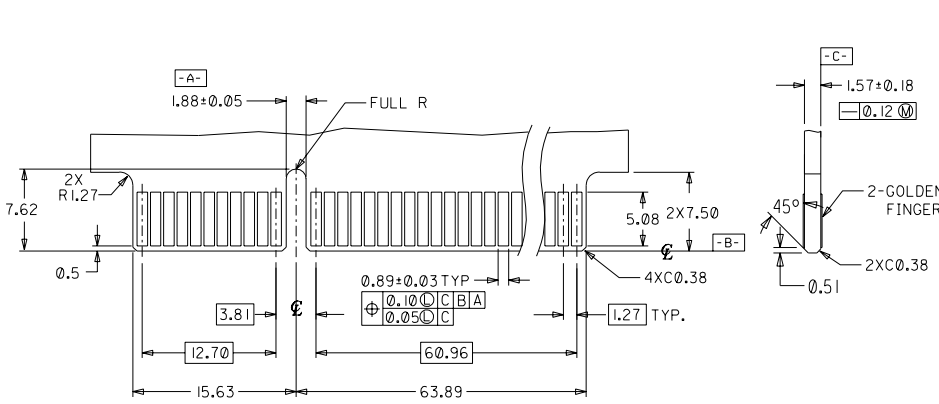
**WITH TWO END CUTS**



**WITH ONE END CUT**



**SECTION A-A**



**RECOMMENDED MATING P.C.B EDGE CONFIGURATION**

- MATERIAL :
- HOUSING - NYLON 6-6,COLOR : WHITE
  - TERMINAL - PHOSPHOR BRONZE.
  - FINISH 0 - GOLD FLASH IN CONTACT AREA, 1.52um/60uin MIN. TIN IN SOLDER TAIL, BOTH OVER 0.76um/30uin MIN. NICKEL OVERALL.
  - 1 - 0.25um/10uin MIN. GOLD IN CONTACT AREA, 1.52um/60uin MIN. TIN IN SOLDER TAIL, BOTH OVER 0.76um/30uin MIN. NICKEL OVERALL.
  - 2 - 0.38um/15uin MIN. GOLD IN CONTACT AREA, 1.52um/60uin MIN. TIN IN SOLDER TAIL, BOTH OVER 0.76um/30uin MIN. NICKEL OVERALL.
  - 3 - 0.76um/30uin MIN. GOLD IN CONTACT AREA, 1.52um/60uin MIN. TIN IN SOLDER TAIL, BOTH OVER 0.76um/30uin MIN. NICKEL OVERALL.
  - 4 - 0.50um/20uin MIN. GOLD IN CONTACT AREA, 1.52um/60uin MIN. TIN IN SOLDER TAIL, BOTH OVER 0.76um/30uin MIN. NICKEL OVERALL.
  - 5 - GOLD FLASH OVER 1.02um/40uin MIN. Pd-NI IN CONTACT AREA, 2.54um/100uin MIN. TIN IN SOLDER TAIL, BOTH OVER 1.27 um/50uin MIN. NICKEL OVERALL.
  - 6 - GOLD FLASH OVER 0.51um/20uin MIN. Pd-NI IN CONTACT AREA, 2.54um/100uin MIN. TIN IN SOLDER TAIL, BOTH OVER 1.27 um/50uin MIN. NICKEL OVERALL.

• PRODUCT SPEC. PS 67009 APPLIES

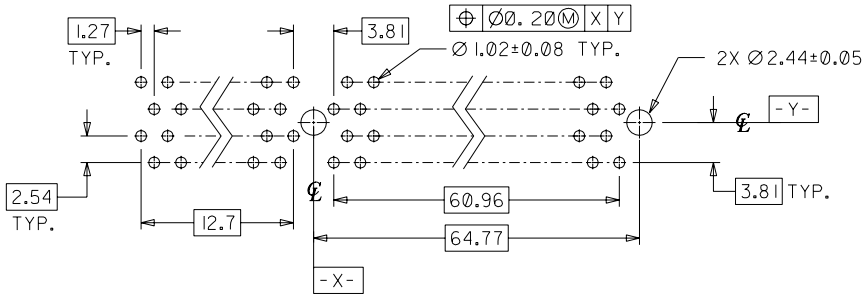
**PART NO. LEGEND : 67009 - \* \* \* \***

- TERMINAL MATERIAL
  - 6 : PHOSPHOR BRONZE
  - 7 : BRASS
- TAIL LENGTH
  - 0 : A= 3.00mm
  - 2 : A= 2.54mm
- PEG VERSION & COLOR
- PLATING VERSION
  - 0 : STANDARD ; BROWN ,WITH ONE END CUT
  - 1 : STANDARD ; WHITE ,WITH ONE END CUT
  - 2 : STANDARD ; BROWN ,WITH TWO END CUTS
  - 3 : STANDARD ; WHITE ,WITH TWO END CUTS
  - 4
  - 5
  - 6

REF. TO ABOVE

REF. TO ABOVE

- D ADD A NEW OPTION 7 102-095 V. Lin 020712
- C REL. TO MANUFACTURING 197-304 SANDRA 970312
- B PER ECN T97-255 SANDRA 970204
- AI PER ECN T97-150 SANDRA 961120



**RECOMMENDED CONNECTOR MOUNTING HOLE PATTERN**