

Magnetic Alarm Switches

Reed Switch

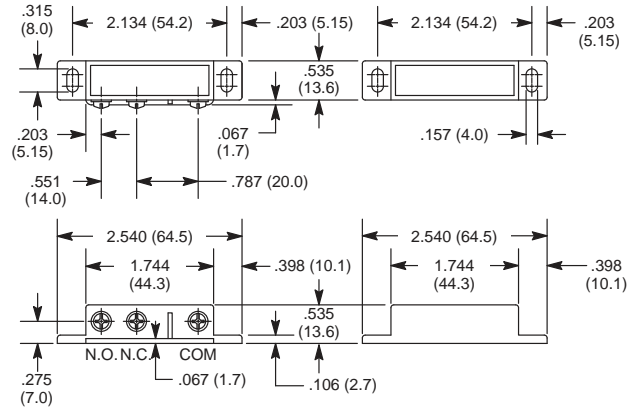
Features

- Can be installed/wired to be Normally Closed & Normally Open
- Commonly Seen on Door and Window Alarms



NTE Type No.	Circuitry	Action	Actuator	Diag No.
54-627	SPDT	NO or NC	Magnet	S99

S99



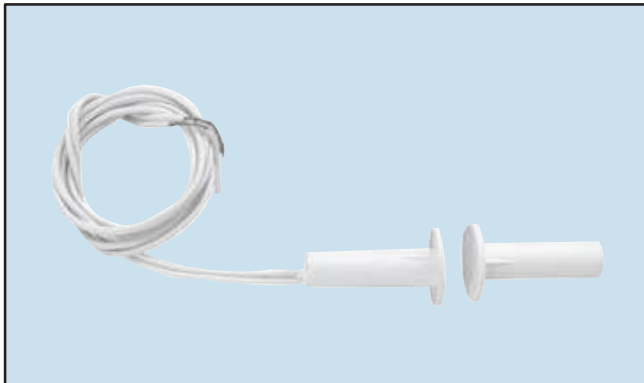
Specifications

Contact Rating: 3 W/VA
Contact Resistance: 200 megohms
Contact Material: Ruthenium Oxide over Rhodium
Voltage Rating: 125 VAC, 100 VDC
Switching Current: 250mA
Insulation Resistance: 10 gigohms
Shock Resistance: nil
Vibration Resistance: nil
Life Expectancy: 10,000,000 cycles
Operating Gap: 1.180" (3cm) max.
Terminal Type: Screw
Mounting Hole: .157" (4mm)

Reed Switch

Features

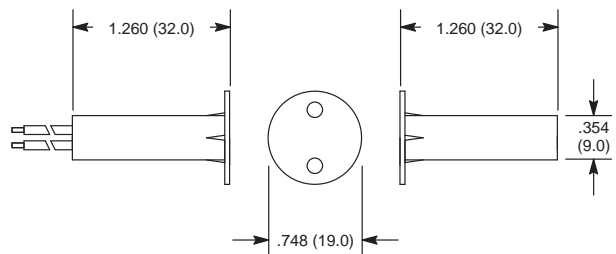
- 3/8" (9mm) Diameter Press Fit
- Operating Gap*: 5/8" (16mm) min.
- 18" Wire Leads
- 3/4" (19mm) Collar Flange for Better Retention



NTE Type No.	Circuitry	Action	Actuator	Diag No.
54-628	SPST-NO	NO for Closed Loop System	Magnet	S100

NOTE: The circuit is open when the magnet is not present.
 * The operating gap is the maximum distance that the magnet can be from the switch before operation is released.

S100



Specifications

Contact Rating: 10W/VA
Contact Resistance: 150 milliohms.
Contact Material: Ruthenium Oxide over Palladium
Switching Voltage: 200 VDC max.
Switching Current: 500mA max.
Insulation Resistance: 10 gigohms
Shock Resistance: 30G for 11mS
Vibration Resistance: 20G (10 to 1000Hz)
Life Expectancy: 20,000,000 cycles (resistive load, 12VDC, 250mA)
Operating Gap: .629" (16mm) min.
Terminal Type: Wire Leads
Mounting Hole: .375" (9mm)

Magnetic Alarm Switches

Reed Switch

Features

- 3/8" (9mm) Dia with 18" Long Wire Leads
- Easy & Quick Installation
- Longer Length
- Operating Gap*: 3/4" (19mm) min.

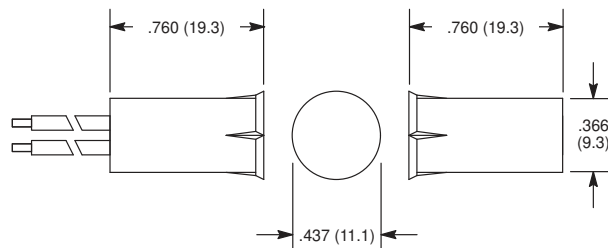


NTE Type No.	Circuitry	Action	Actuator	Diag No.
54-629	SPST-NO	NO for Closed Loop System	Magnet	S101

NOTE: The circuit is open when the magnet is not present.

* The operating gap is the maximum distance that the magnet can be from the switch before operation is released.

S101



Specifications

Contact Rating: 10W/VA
 Contact Resistance: 150 milliohms.
 Contact Material: Ruthenium Oxide over Palladium
 Switching Voltage: 200 VDC max.
 Switching Current: 500mA max.
 Insulation Resistance: 10 gigohms
 Shock Resistance: 30G for 11mS
 Vibration Resistance: 20G (10 to 1000Hz)
 Life Expectancy: 20,000,000 cycles (resistive load, 12VDC, 250mA)
 Operating Gap: .748" (19mm) min.
 Terminal Type: Wire Leads
 Mounting Hole: .375" (9mm)

Reed Switch

Features

- 3/8" (9mm) Dia with Adaptor Holder
- Operating Gap*: 3/4" (19mm) min.
- Easy & Quick Installation
- 3/4" Adaptor/Holder

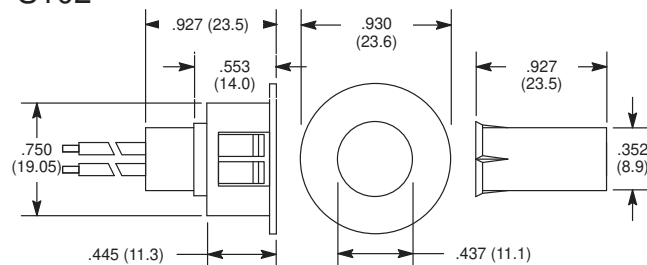


NTE Type No.	Circuitry	Action	Actuator	Diag No.
54-631	SPST-NO	NO for Closed Loop System	Magnet	S102

NOTE: The circuit is open when the magnet is not present.

* The operating gap is the maximum distance that the magnet can be from the switch before operation is released.

S102



Specifications

Contact Rating: 10W/VA
 Contact Resistance: 150 milliohms.
 Contact Material: Ruthenium Oxide over Palladium
 Switching Voltage: 200 VDC max.
 Switching Current: 500mA max.
 Insulation Resistance: 10 gigohms
 Shock Resistance: 30G for 11mS
 Vibration Resistance: 20G (10 to 1000Hz)
 Life Expectancy: 20,000,000 cycles (resistive load, 12VDC, 250mA)
 Operating Gap: .748" (19mm) min.
 Terminal Type: Wire Leads
 Mounting Hole: .375" (9mm)

Magnetic Alarm Switches

Reed Switch

Features

- Mini Stick-On Surface Mount Contact with Side Leads
- 18" Long Side Wire Leads
- Adhesive & Screw Mounting
- Operating Gap*: 3/4" (19mm) min.

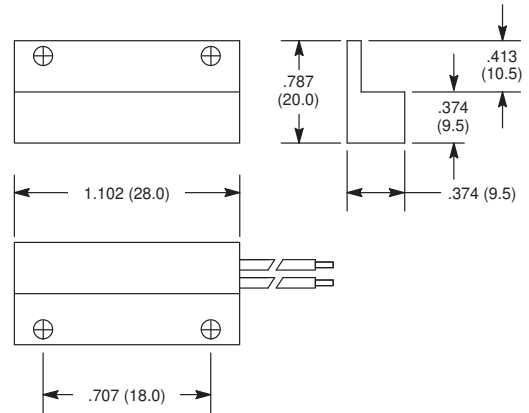


NTE Type No.	Circuitry	Action	Actuator	Diag No.
54-632	SPST-NO	NO for Closed Loop System	Magnet	S103

NOTE: The circuit is open when the magnet is not present.

* The operating gap is the maximum distance that the magnet can be from the switch before operation is released.

S103



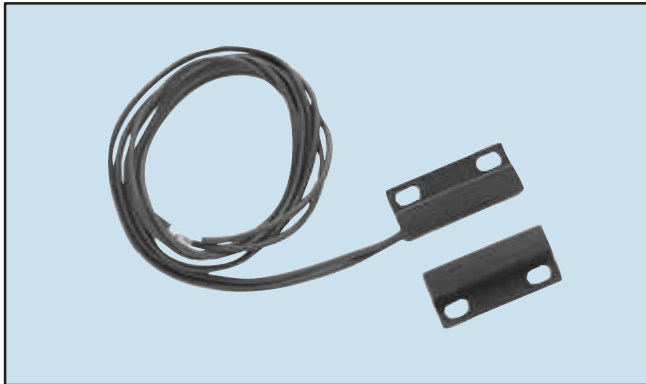
Specifications

Contact Rating: 10W/VA
 Contact Resistance: 150 milliohms.
 Contact Material: Ruthenium Oxide over Palladium
 Switching Voltage: 200 VDC max.
 Switching Current: 500mA max.
 Insulation Resistance: 10 gigohms
 Shock Resistance: 30G for 11mS
 Vibration Resistance: 20G (10 to 1000Hz)
 Life Expectancy: 20,000,000 cycles (resistive load, 12VDC, 250mA)
 Operating Gap: .748" (19mm) min.
 Terminal Type: Wire Leads
 Mounting Hole: .250" (6.35mm)

Reed Switch

Features

- Mini Stick-On Contact with Flange Center Leads
- 18" Leads
- Adhesive and Screw Mount
- Operating Gap*: 1" (25mm)

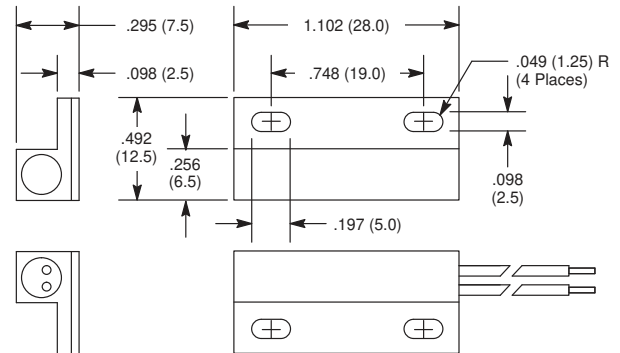


NTE Type No.	Color	Circuitry	Action	Actuator	Diag No.
54-630	White	SPST-NO	NO for Closed Loop System	Magnet	S107
54-636	Brown	SPST-NO	NO for Closed Loop System	Magnet	S107
54-637	Black	SPST-NO	NO for Closed Loop System	Magnet	S107

NOTE: The circuit is open when the magnet is not present.

* The operating gap is the maximum distance that the magnet can be from the switch before operation is released.

S107



Specifications

Contact Rating: 10W/VA
 Contact Resistance: 150 milliohms.
 Contact Material: Ruthenium Oxide over Palladium
 Switching Voltage: 200 VDC max.
 Switching Current: 500mA max.
 Insulation Resistance: 10 gigohms
 Shock Resistance: 30G for 11mS
 Vibration Resistance: 20G (10 to 1000Hz)
 Life Expectancy: 20,000,000 cycles (resistive load, 12VDC, 250mA)
 Terminal Type: Wire Leads
 Mounting Hole: .200" (5mm)

Magnetic Alarm Switches

Roller Ball Switch

Features

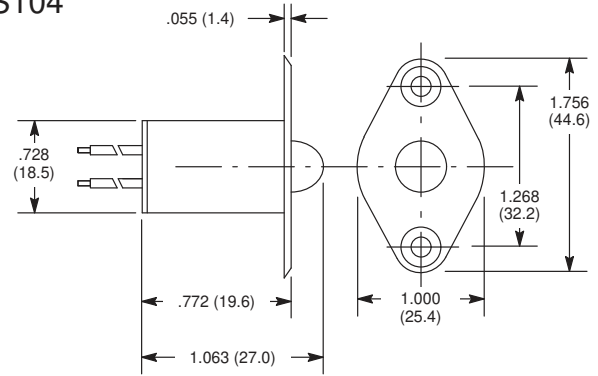
- 3/8" Dia with 18" Long Wire Leads
- Flange for Reliable Retention
- Suitable For Sliding as well as Swing Doors



NTE Type No.	Circuitry	Action	Actuator	Diag No.
54-633	SPST-NO	NO for Closed Loop System	Magnet	S104

NOTE: The circuit is open when the ball is not depressed.

S104



Specifications

Contact Rating: 10W/VA
 Contact Resistance: 150 milliohms.
 Contact Material: Ruthenium Oxide over Palladium
 Switching Voltage: 200 VDC max.
 Switching Current: 500mA max.
 Insulation Resistance: 10 gigohms
 Shock Resistance: 30G for 11mS
 Vibration Resistance: 20G (10 to 1000Hz)
 Life Expectancy: 20,000,000 cycles (resistive load, 12VDC, 250mA)
 Terminal Type: Wire Leads
 Mounting Hole: .375" (9mm)

Panic Switch

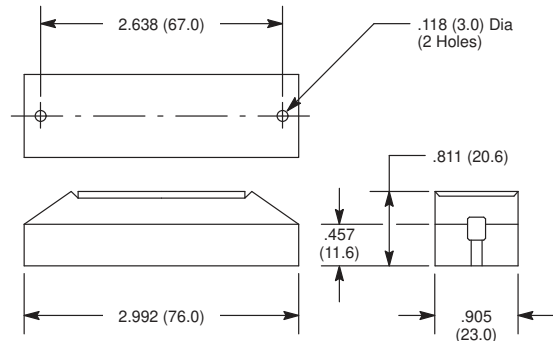
Features

- Surface Mount Type
- Push Button Function
- Emergency Marking on the Button



NTE Type No.	Circuitry	Action	Actuator	Diag No.
54-634	SPST-NO	NO for Closed Loop System	Microswitch	S105

S105



Specifications

Contact Rating: 10W/VA
 Contact Resistance: 150 milliohms.
 Contact Material: Silver over Palladium
 Switching Voltage: 200 VDC max.
 Switching Current: 500mA max.
 Insulation Resistance: 10 gigohms
 Shock Resistance: 30G for 11mS
 Vibration Resistance: 20G (10 to 1000Hz)
 Life Expectancy: 20,000,000 cycles (resistive load, 12VDC, 250mA)
 Terminal Type: Y Type Tin Plated Brass

Magnetic Alarm Switches

Plunger Switch

Features

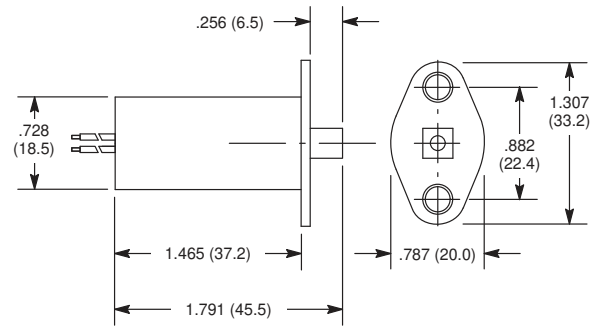
- 3/8" Dia Mounting Hole
- Flange for Reliable Retention
- 3mm Pre-Travel Stroke and 7mm Overall Operating Stroke
- 18" Long Wire Leads
- Screw Provided



NTE Type No.	Circuitry	Action	Actuator	Diag No.
54-635	SPST-NO	NO for Closed Loop System	Magnet	S106

NOTE: The circuit is open when the plunger is not depressed.

S106



Specifications

- Contact Rating: 10W/VA
- Contact Resistance: 150 milliohms.
- Contact Material: Ruthenium Oxide over Palladium
- Switching Voltage: 200 VDC max.
- Switching Current: 500mA max.
- Insulation Resistance: 10 gigohms
- Shock Resistance: 30G for 11mS
- Vibration Resistance: 20G (10 to 1000Hz)
- Life Expectancy: 20,000,000 cycles (resistive load, 12VDC, 250mA)
- Terminal Type: Wire Leads
- Mounting Hole: .375" (9mm)