



WEIGHT

.97g/cm (.087 oz/in)

MATERIALS AND FINISH

HOUSING

Material:

.025-in. (.64-mm) thick Beryllium Copper per QQ-C- 533 or .024-in. (.61-mm) thick Cold Rolled Steel per ASTM A-366

Finish:

See finish table on opposite page

CAM

Material:

Beryllium Copper per QQ-C-533

LEVER

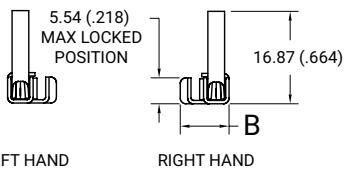
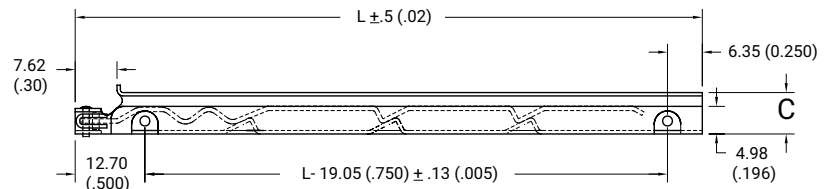
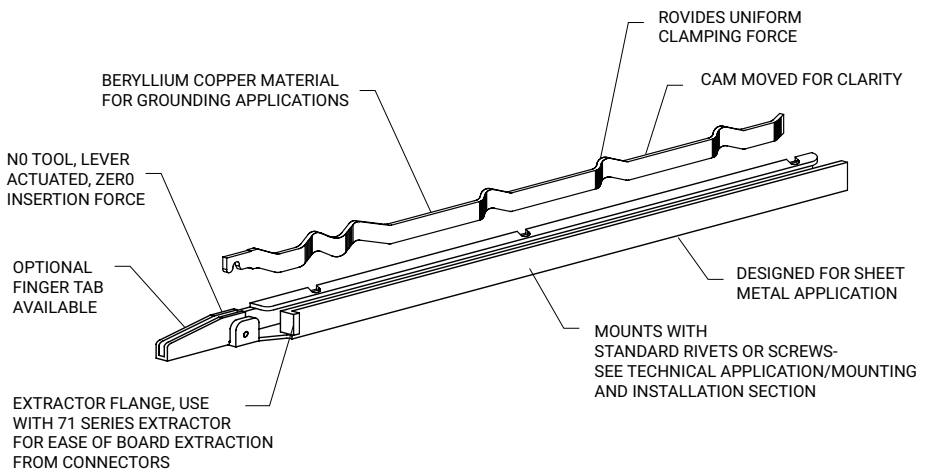
Material:

Cold Rolled Steel per ASTM A-366

Note: Beryllium Copper lever furnished when housing is unplated

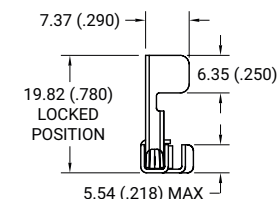
Finish:

See finish table on opposite page

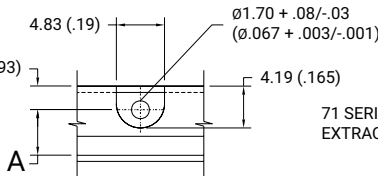
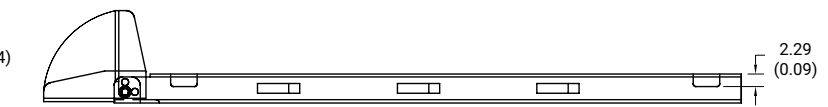


LEFT HAND

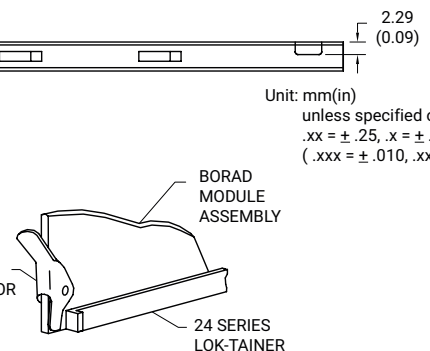
RIGHT HAND



FINGER TAB OPTION
NOT TO SCALE - LEFT HAND SHOWN



MOUNTING HOLE DETAIL
NOT TO SCALE

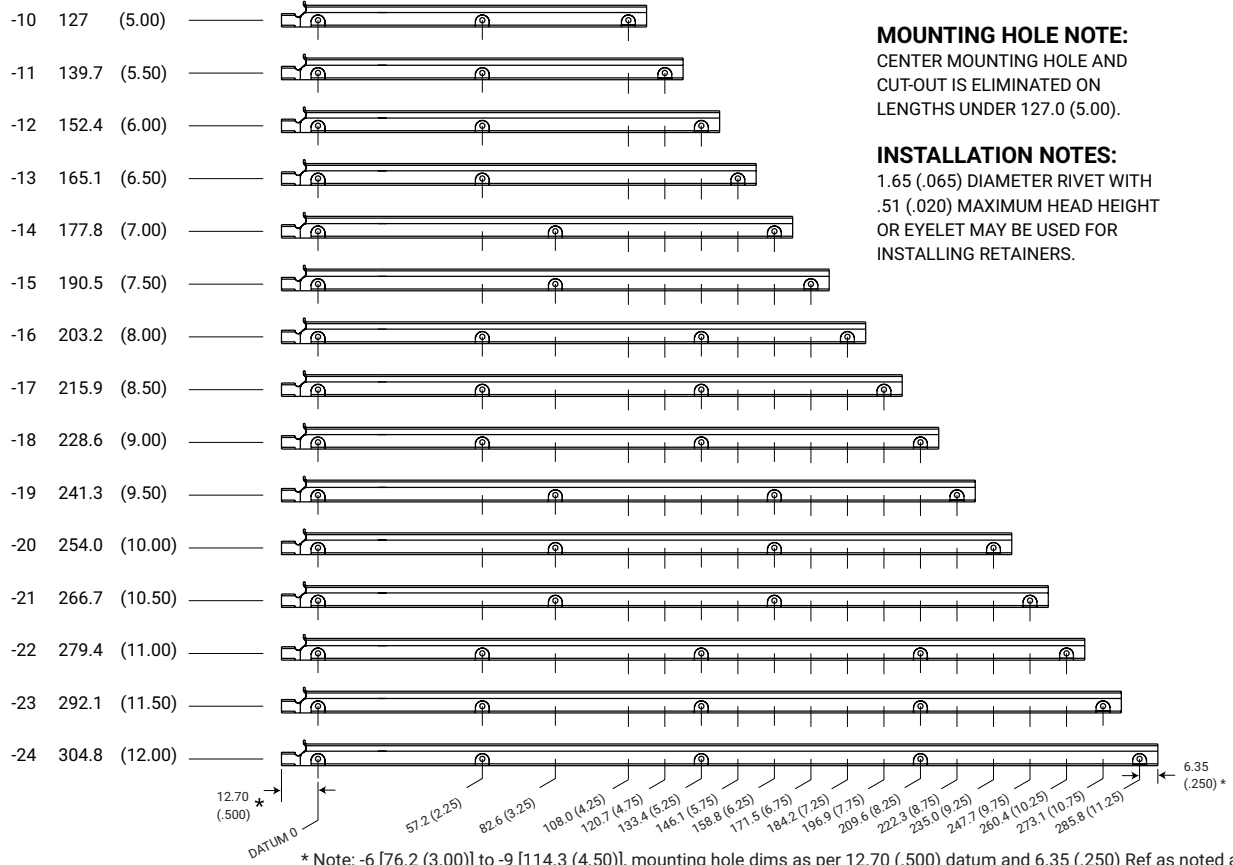


71 SERIES EXTRACTOR
OPTIONAL/NOT TO SCALE

Unit: mm(in)
unless specified otherwise,
.xx = ± .25, x = ± .5
(.xxx = ± .010, .xx = ± .02)

SERIES 24 LOK TAINER

MOUNTING HOLE DIMENSIONS



Part Number Code	T 24 B X - 2 - 10 - 5 - L
Finger Tab	T
Fingertab _____ T	
None _____ [Blank]	
Housing Material	B
Beryllium Copper _____ B	
or select from Materials Table	
Extractor Flange	X
(Standard) _____ X	
None _____ [Blank]	
Board Thickness	2
1.60 (.063) PCB Thickness _____ 2	
or select from Board Thickness Table	
Length	6 [76.2(3.00)]
Length in 12.7 (.50) increments _____ 6 [76.2(3.00)]	
_____ to 24 [304.8(12.00)]	
Finish	5
Gold Plate _____ 5	
or select from Finish Table	
Lever Action	L
Left hand _____ L	
Right hand _____ R	

Part Number Code example: 24BX-3-10-6-L

Series 24 Lever-actuated LOK-TAINER, Beryllium Copper housing with flange, 2.39-mm (.094-in.) thick board, 127.2-mm (5.00-in.) long, nickel plate finish and left hand lever action

CODE	MATERIALS TABLE
B	BERYLLIUM COPPER, 1/4H PER ASTM-B-194
S	STEEL PER ASTM-A-366

BOARD THICKNESS TABLE

CODE	THICKNESS		
	A	B	C
+127/-000			
+005/-000			
-1	0.79 (.031)	4.58 (.180)	8.89 (.350)
-2	1.60 (.063)	5.34 (.210)	9.66 (.380)
-3	2.39 (.094)	4.58 (.180)	8.89 (.350)

FINISH TABLE

CODE	FINISH TABLE
-1	NONE
-3	CADMIUM PER QQ-P-416, TYPE 2, CLASS 2
-5	GOLD PLATE PER MIL-G-45204, TYOE 1, GLASS 1
-6	NICKEL PLATE PER QQ-N-290, CLASS 1, GRADE G, BRIGHT
-7	ZINC PLATE CLEAR CHROMATE, PER ASTM-B-633, Fe/Zn 8
-8	ZINC PLATE YELLOW CHROMATE, PER ASTM-B-633, Fe/Zn 8

NOTE: NO FINISH (-1) NOT AVAILABLE WITH "S" STEEL MATERIAL



SCHROFF