



5-Pin PLCC Motorola MC68HC11E9-to-56-Pin SDIP Adapter

FEATURES

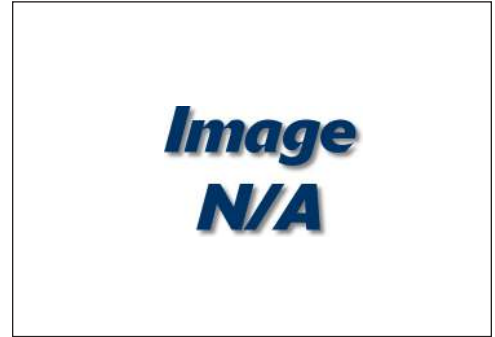
- Allows placing an PLCC package on a board laid out for a shrink DIP.

GENERAL SPECIFICATIONS

- BOARD MATERIAL: 0.062 [1.58] thick FR-4 with 1-oz. Cu traces, both sides
- PADS: HASL
- PINS: Brass 360 1/2-hard per UNS C36000, ASTM B16/B16M
- PIN PLATING: Sn/Pb 93/7 per ASTM B579-73 over 100μ [2.54μ] Ni per SAE AMS-QQ-N-290
- OPERATING TEMPERATURE: 221°F [105°C]
- FEMALE SOCKET: AMP or equivalent standard single beam PLCC socket

MOUNTING CONSIDERATIONS

- Solder process like any other surface mount device



CUSTOMIZATION: In addition to the standard products shown on this page, Aries specializes in custom design and production. Special materials, platings, sizes, and configurations can be furnished, depending on the quantity. **NOTE:** Aries reserves the right to change product general specifications without notice.

ORDERING INFORMATION

1109252-P

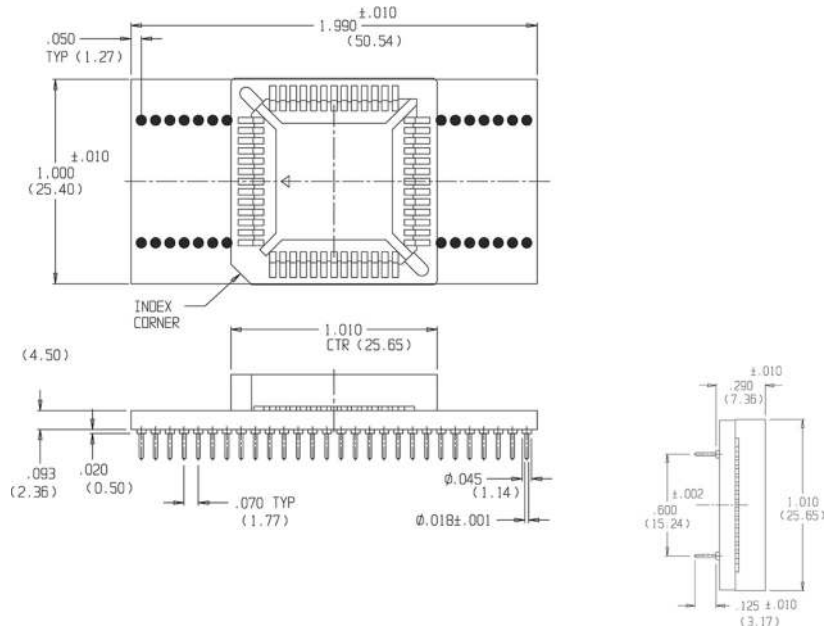
Optional Panelized Form

PLCC	SDIP	PLCC	SDIP
1	1	--	29
2	2	27	30
3	3	28	31
4	4	29	32
5	5	30	33
6	6	31	34
7	7	32	35
8	8	33	36
9	9	34	37
10	10	35	38
11	11	36	39
12	12	37	40
13	13	38	41
14	14	39	42
15	15	40	43
16	16	41	44
17	17	42	45
18	18	43	46
19	19	44	47
20	20	45	48
--	21	46	49
21	22	47	50
22	23	48	51
23	24	49	52
24	25	50	53
25	26	51	54
26	27	52	55
--	28		56

ALL DIMENSIONS: INCHES [MILLIMETERS]

ALL TOLERANCES: ±0.005 [0.13] UNLESS OTHERWISE SPECIFIED

CONSULT FACTORY FOR OTHER SIZES AND CONFIGURATIONS



ARIES
ELECTRONICS, INC.

Bristol, PA 19007-6810 USA
TEL (215) 781-9956 • FAX (215) 781-9845
WWW.ARIESELEC.COM • INFO@ARIESELEC.COM