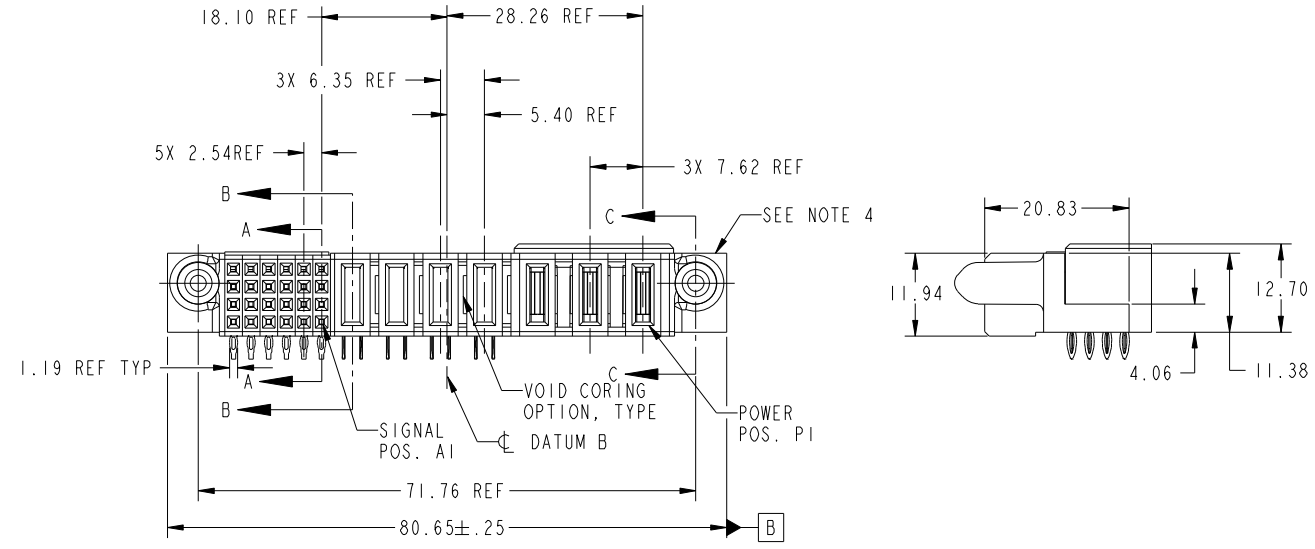
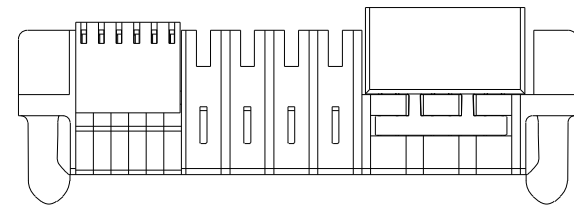


Tous droits strictement reserves. Reproduction ou communication a des tiers interdite sous quelque forme que ce soit sans autorisation écrite du propriétaire. Propriete de c FCI. Droits de reproduction FCI.



All rights strictly reserved. Reproduction or issue to third parties in any form whatever is not permitted without written authority from the proprietor. Property of FCI. Copyright FCI.

PRODUCT NO.	ROWS	SIGNAL					POWER					E1		
		E2	6	5	4	3	2	1	P7	P6	P5		P4	P3
51923-006_- NOTE: 3	D C B A	S	S	S	S	S	P	P	P	P	P	P	P	P
		R	R	R	R	R	P	P	P	P	P	P	P	P
		N	N	N	N	N	P	P	P	P	P	P	P	P



CODE	DIM "M" MATING LENGTH	CONTACT TYPE
N	[N/A]	SIGNAL
P	[N/A]	SIGNAL
R	[N/A]	SIGNAL
S	[N/A]	SIGNAL
PF	[2.34]	POWER
PG	[1.07]	POWER
PH	[2.34]	POWER

mat'l code				SEE NOTE		tolerances unless otherwise specified		CUSTOMER		FCI	
ltr	ecn no.	dr	date	linear	0.X ± 0.3	projection		COPY		www.fciconnect.com	
A	DG07-0177	JMG	04/26/07	angles	0.XX ± 0.13	MIM		title		3ACP + 4P + 24S	
				dr	0.XXX ± 0.051	scale		product family		PwrBlade	
				enr	0° ± 2°	1:1		size		code	
				chr	JM GUO 04/26/07			dwg no		213	
				appd	RYAN YUAN 04/26/07			A		1 of 4	
					GARY HSI EH 04/26/07			51923-006			
					JOSEPH HSIA 04/26/07			cage code		22526	
sheet index	revision sheet	A	A	A	A						
		1	2	3	4						

Pro/E

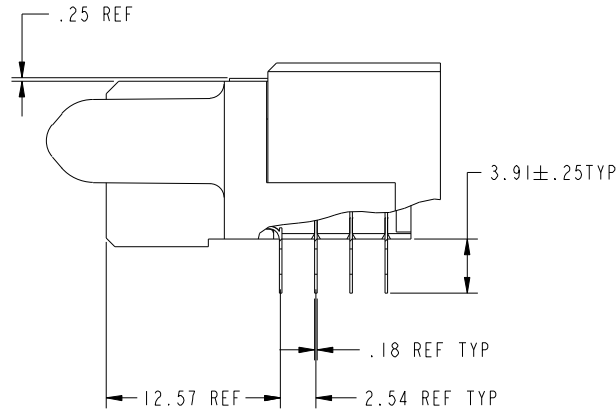
cage code 22526

Tous droits strictement reserves. Reproduction ou communication a des tiers interdite sous quelque forme que ce soit sans autorisation écrite du propriétaire. Propriete de c FCI. Droits de reproduction FCI.

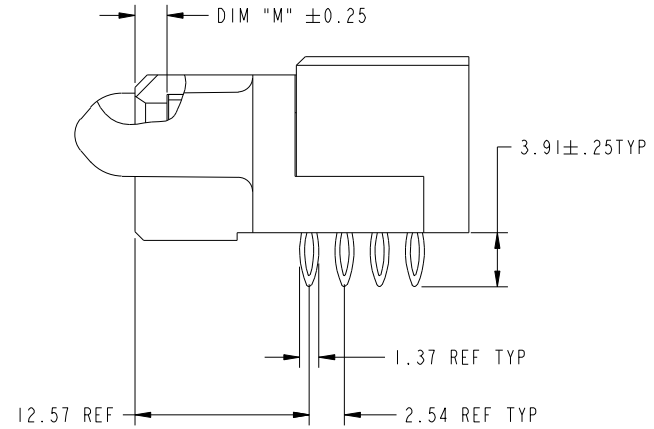
All rights strictly reserved. Reproduction or issue to third parties in any form whatever is not permitted without written authority from the proprietor. Property of FCI. Copyright FCI.



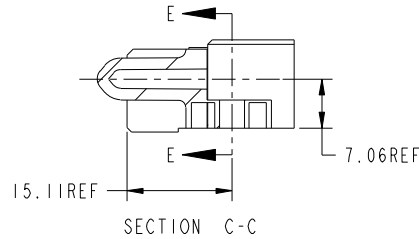
PRODUCT NUMBER
51923-006--
NOTE: 3



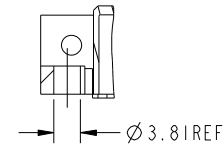
BROKEN-OUT SECTION A-A
SCALE 2:1



BROKEN-OUT SECTION B-B
SCALE 2:1



SECTION C-C



PARTIAL SECTION E-E

mat'l code		SEE NOTE		tolerances unless otherwise specified		CUSTOMER		FCI	
ltr	ecn no.	dr	date	linear	0.X ± 0.3	COPY		www.fciconnect.com	
A					0.XX ± 0.13	projection		title	
				angles	0.XXX ± 0.051			3ACP + 4P + 24S R/A PRESS-FIT RECEPTACLE	
				dr	0° ± 2°			product family PwrBlade code	
				enr	JM GUO 04/26/07	scale		size	
				chr	RYAN YUAN 04/26/07	1:1		dwg no	
				appd	GARY HSI EH 04/26/07			51923-006	
					JOSEPH HSIA 04/26/07			sheet	
sheet index	revision sheet							2 of 4	

cage code 22526

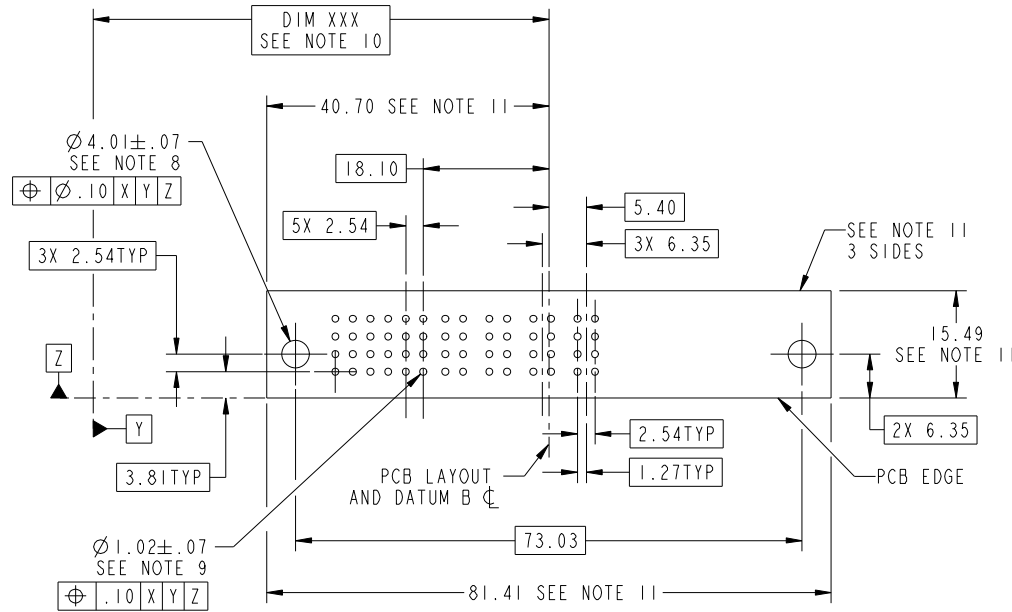
Pro/E

Tous droits strictement reserves. Reproduction ou communication a des tiers interdite sous quelque forme que ce soit sans autorisation écrite du propriétaire. Propriete de c FCI. Droits de reproduction FCI.

All rights strictly reserved. Reproduction or issue to third parties in any form whatever is not permitted without written authority from the proprietor. Property of FCI. Copyright FCI.



PRODUCT NUMBER
51923-006--
NOTE: 3



mat'l code		SEE NOTE		tolerances unless otherwise specified		CUSTOMER		FCI		www.fciconnect.com	
ltr	ecr no.	dr	date	linear	0.X ± 0.3	COPY		projection		title	
A					0.XX ± 0.13	MIM				3ACP + 4P + 24S R/A PRESS-FIT RECEPTACLE	
				angles	0.XXX ± 0.051	scale		product family		code	
				dr	0° ± 2°	1:1		PwrBlade		213	
				enr	JM GUO 04/26/07			size		sheet	
				chr	RYAN YUAN 04/26/07			dwg no		3 of 4	
				appd	GARY HSIEH 04/26/07			A		51923-006	
					JOSEPH HSIA 04/26/07						
sheet index	revision sheet										

cage code 22526

Pro/E

Tous droits strictement reserves. Reproduction ou communication a des tiers interdite sous quelque forme que ce soit sans autorisation écrite du propriétaire. Propriete de c FCI. Droits de reproduction FCI.



All rights strictly reserved. Reproduction or issue to third parties in any form whatever is not permitted without written authority from the proprietor. Property of FCI. Copyright FCI.

PRODUCT NUMBER
51923-006--
NOTE: 3

NOTES:

1. DIMENSIONS AND TOLERANCES ARE IN ACCORDANCE WITH ASME Y14.5M, 1994 UNLESS OTHERWISE SPECIFIED.

CONNECTOR NOTES:

- ② HOUSING MATERIAL: UL 94 V-0 GLASS FILLED
HIGH-TEMP THERMOPLASTIC
POWER CONTACT MATERIAL: COPPER ALLOY
SIGNAL PIN MATERIAL: COPPER ALLOY
- 3. 51923-006;51923-006LF PLATING SPEC. SEE PRINT:10064183
- ④ MANUFACTURER'S NAME, P/N, AND DATE CODE TO APPEAR ON THIS SURFACE.
- 5. PRODUCT SPECIFICATION GS-12-149.
APPLICATION SPECIFICATION BUS-20-067.
- 6. PACKAGED IN TRAYS.

PCB NOTES:

- 7. ALL HOLE DIAMETERS ARE FINISHED HOLE SIZE.
- ⑧ MOUNTING HOLES, WHERE APPLICABLE, ARE UNPLATED.
- ⑨ $\varnothing 1.151 \pm 0.025$ DRILLED HOLES PLATED WITH
0.008 MIN SnPb OR Sn OVER 0.03
TO 0.08 Cu PLATING TO ACHIEVE
 $\varnothing 1.02 \pm 0.07$ HOLE.
- ⑩ "DIM XXX" TO BE DETERMINED BY THE CUSTOMER.
- ⑪ CONNECTOR KEEP-OUT ZONE.
- 12. USE FCI CAM TOOL 430140-041
TO APPLY CONNECTOR TO PCB.

mat'l code				SEE NOTE	tolerances unless otherwise specified	CUSTOMER	FCI www.fciconnect.com	
ltr	ecr no.	dr	date	linear	0.X ± 0.3	COPY	title	
A					0.XX ± 0.13	projection	3ACP + 4P + 24S R/A PRESS-FIT RECEPTACLE	
				angles	0.XXX ± 0.051		product family PwrBlade code	
				dr	0° ± 2°	MIM	size	213
				enr	JM GUO 04/26/07	← MIM →	dwg no	sheet
				chr	RYAN YUAN 04/26/07	scale	51923-006	4 of 4
				appd	GARY HSIEH 04/26/07	1:1		
					JOSEPH HSIA 04/26/07			
sheet index	revision sheet							

cage code 22526

Pro/E