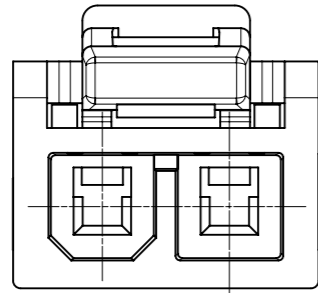


NOTES:

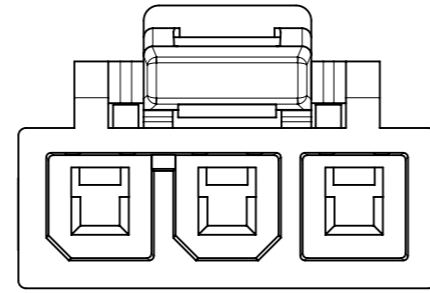
1. MATERIAL: NYLON, BLACK,UL 94-V0
2. FINISH: NONE.
3. PRODUCTION SPECIFICATION: 2125150000-PS;  
APPLICATION SPECIFICATION: 2125150001-AS.
4. PACKAGING SPECIFICATION: 2125140001-PK.
5. THIS HOSUING TO BE USED WITH FEMALE TERMINAL SERIES 212515 AND TPA SERIES 212516.
6. THIS PART MATES WITH SERIES 215915.
7. THIS PART CONFORMS TO CLASS 'B' REQUIREMENTS OF COSMETIC SPECIFICATION PS-45499-002.

FUNCTIONAL SYMBOLS	THIS DRAWING CONTAINS INFORMATION THAT IS PROPRIETARY TO MOLEX ELECTRONIC TECHNOLOGIES, LLC AND SHOULD NOT BE USED WITHOUT WRITTEN PERMISSION		CURRENT REV DESC:		<b>molex</b>								
	△A = 0	mm							SCALE 2:1				
DIVISIONAL SYMBOLS	GENERAL TOLERANCES (UNLESS SPECIFIED)				EC NO: 679543 DRWN: ZIXUAG 2021/09/28 CHK'D: XQZHANG 2021/09/29 APPR: XQZHANG 2021/09/29				MINI-FIT MAX SR RECEPTACLE				
	ANGULAR TOL ± 0.5°								PRODUCT CUSTOMER DRAWING				
	4 PLACES ±				INITIAL REVISION:				DOCUMENT NUMBER		DOC TYPE	DOC PART	REVISION
	3 PLACES ±				DRWN: ZIXUAG 2021/05/24		2159130000-SD		PSD	000	A1		
	2 PLACES ± 0.25				APPR: YXZHENG 2021/07/19		MATERIAL NUMBER		CUSTOMER		SHEET NUMBER		
1 PLACE ± 0.35				DRAFT WHERE APPLICABLE MUST REMAIN WITHIN DIMENSIONS		THIRD ANGLE PROJECTION	DRAWING	SERIES	MATERIAL NUMBER	CUSTOMER	SHEET NUMBER		
0 PLACES ±				A3-SIZE	215913	SEE TABLE	GENERAL CUSTOMER	1 OF 2					

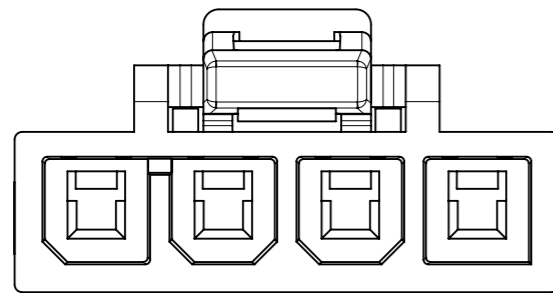
CKT SIZE	PART NUMBER	DIM_X
2	215913-1002	10.10
3	215913-1003	13.80
4	215913-1004	18.00
5	215913-1005	22.20
6	215913-1006	26.40



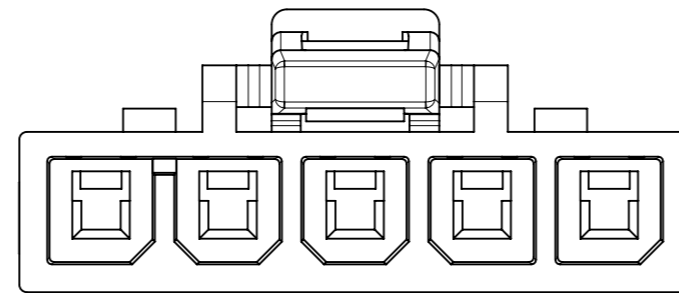
2CKT



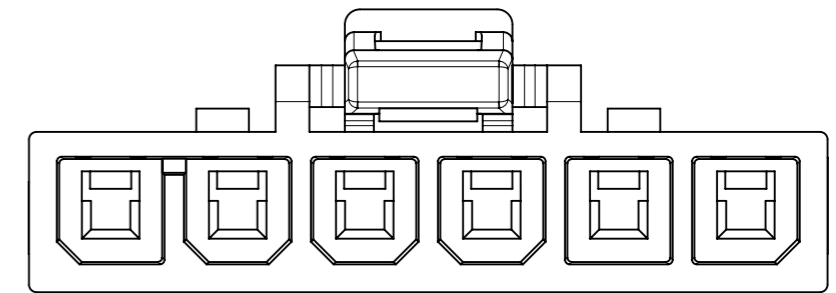
3CKT



4CKT



5CKT



6CKT

FUNCTIONAL SYMBOLS	THIS DRAWING CONTAINS INFORMATION THAT IS PROPRIETARY TO MOLEX ELECTRONIC TECHNOLOGIES, LLC AND SHOULD NOT BE USED WITHOUT WRITTEN PERMISSION		CURRENT REV DESC:		<b>molex</b>																				
	$\nabla_A = 0$ $\nabla_F = 0$ $\nabla_P = 0$	DIMENSION UNITS: <b>mm</b> SCALE: <b>4:1</b>						GENERAL TOLERANCES (UNLESS SPECIFIED)																	
DIVISIONAL SYMBOLS	<table border="1"> <thead> <tr> <th></th> <th>MM</th> <th>INCH</th> </tr> </thead> <tbody> <tr> <td>4 PLACES</td> <td>±</td> <td>±</td> </tr> <tr> <td>3 PLACES</td> <td>±</td> <td>±</td> </tr> <tr> <td>2 PLACES</td> <td>± 0.25</td> <td>±</td> </tr> <tr> <td>1 PLACE</td> <td>± 0.35</td> <td>±</td> </tr> <tr> <td>0 PLACES</td> <td>±</td> <td>±</td> </tr> </tbody> </table>			MM	INCH	4 PLACES	±	±	3 PLACES	±	±	2 PLACES	± 0.25	±	1 PLACE	± 0.35	±	0 PLACES	±	±	EC NO: 679543 DRWN: ZIXUAQ 2021/09/28 CHK'D: XQZHANG APPR: XQZHANG 2021/09/29		MINI-FIT MAX SR RECEPTACLE		
		MM	INCH																						
4 PLACES	±	±																							
3 PLACES	±	±																							
2 PLACES	± 0.25	±																							
1 PLACE	± 0.35	±																							
0 PLACES	±	±																							
DRAFT WHERE APPLICABLE MUST REMAIN WITHIN DIMENSIONS		THIRD ANGLE PROJECTION	DRAWING: <b>A3-SIZE</b>	SERIES: <b>215913</b>	MATERIAL NUMBER: <b>SEE TABLE</b>	CUSTOMER: <b>GENERAL CUSTOMER</b>	SHEET NUMBER: <b>2 OF 2</b>																		