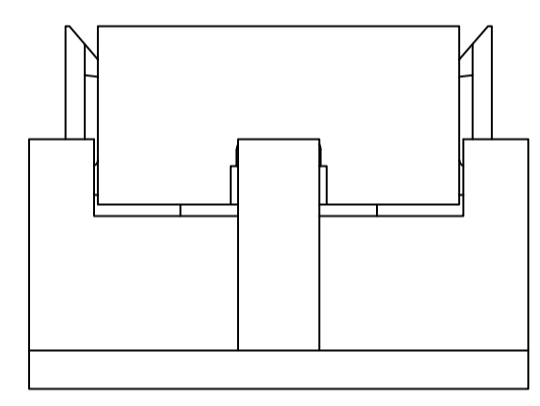
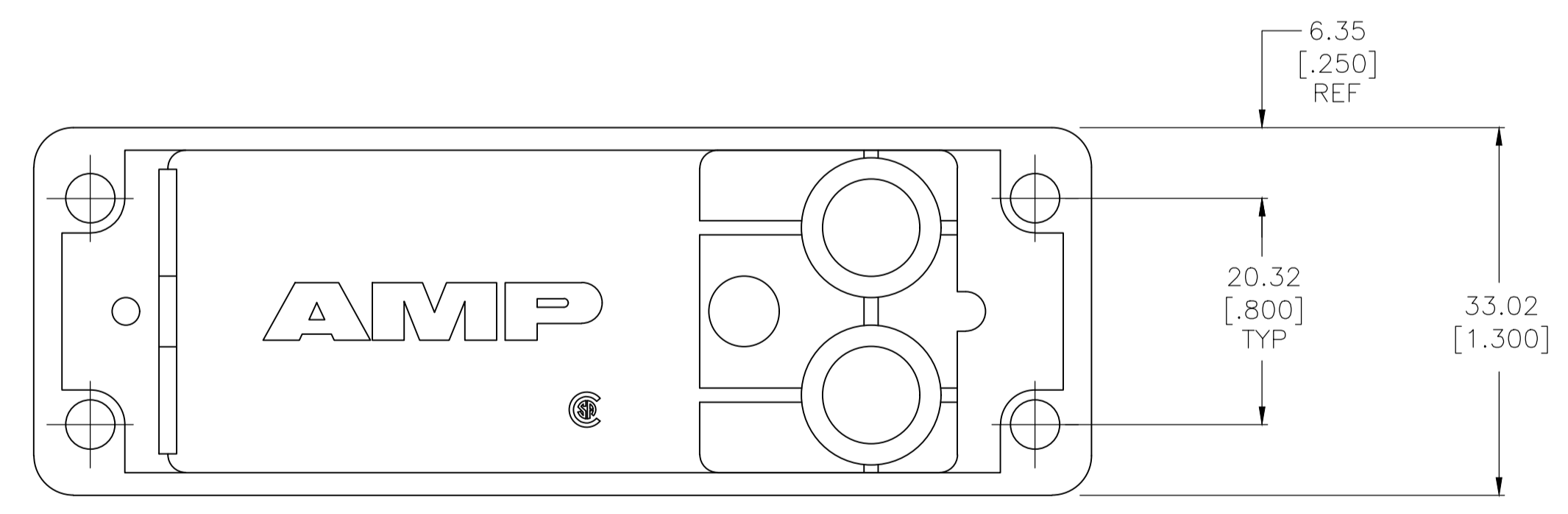
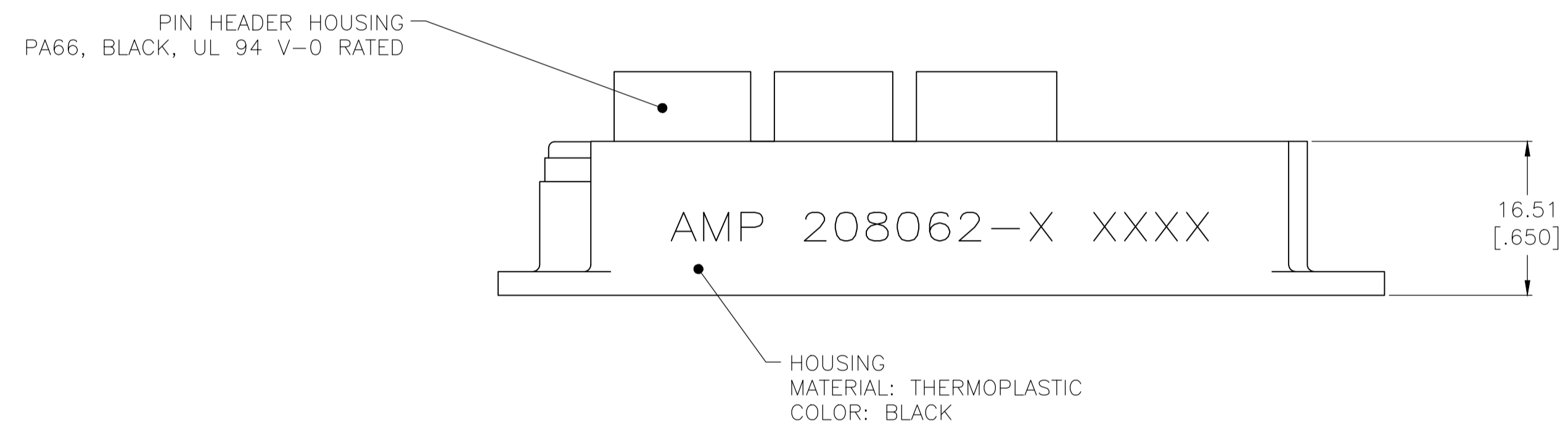
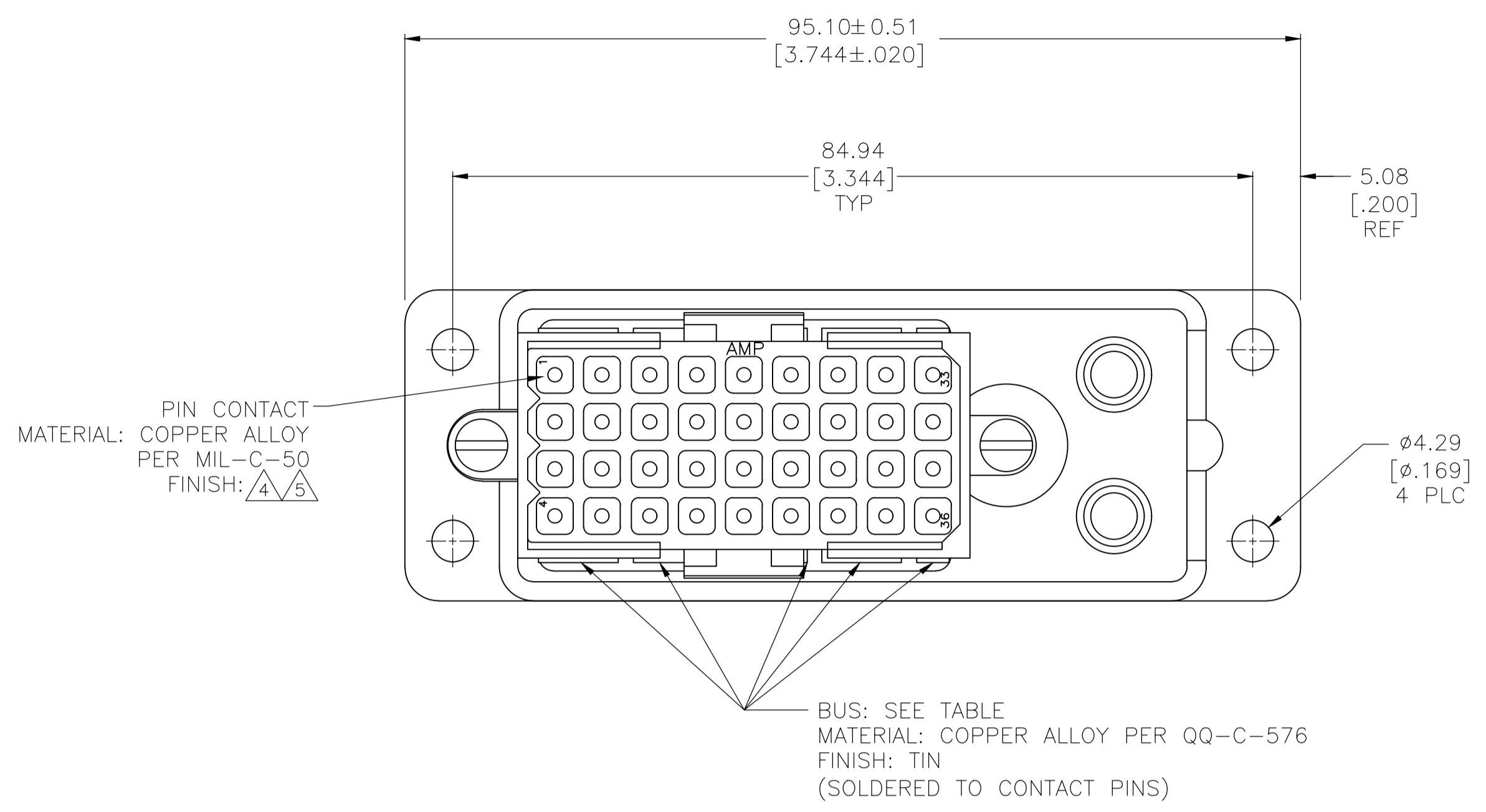


REVISIONS					
P	LTR	DESCRIPTION	DATE	DMN	APVD
J		REVISED PER ECO-17-011181	03AUG2017	RS	MZ
K		REVISED PER ECO-18-000439	19JAN2018	RS	MZ
L		REVISED PER ECO-20-002045	13FEB2020	RK	MZ

NOTES:

- 1 MATES WITH PLUG 207019-1.
- 2 CIRCUITS 1 THRU 8 COMMONED, 9 THRU 16 COMMONED, 17 THRU 24 COMMONED, 25 THRU 32 COMMONED AND 33 THRU 36 COMMONED TOGETHER.
- 3 ALL CURCUITS COMMONED TOGETHER.
- 4 TIN-LEAD OVER NICKEL PER QQ-N-290 OR COPPER PER MIL-C-14550.
- 5 0.76 μm (.000030) MIN GOLD PER MIL-G-45204 FOR A LENGTH OF 5.08 (.200) FROM MATING END, 3.81 μm (.000150) MIN TIN-LEAD PER MIL-T-10727 FOR A LENGTH OF 4.83 (.190) MIN. FROM OPPOSITE END, BOTH OVER 1.27 μm (.000050) MIN NICKEL PER QQ-N-290.
- 6 TIN OVER NICKEL PER QQ-N-290 OR COPPER PER MIL-C-14550.
- 7 0.76 μm (.000030) MIN GOLD PER MIL-G-45204 FOR A LENGTH OF 5.08 (.200) FROM MATING END, 3.81 μm (.000150) MIN TIN PER MIL-T-10727 FOR A LENGTH OF 4.83 (.190) MIN. FROM OPPOSITE END, BOTH OVER 1.27 μm (.000050) MIN NICKEL PER QQ-N-290.
- 8 OBSOLETE PARTS: OBSOLETE CIS STREAMLINING PER D.RENAUD/D.SINISI



OBSOLETE	Δ 8	(1) 36 POSITION	Δ 3	1-208062-1
	Δ 7	(1) 4 POSN AND (4) 8 POSN	Δ 2	1-208062-0
	Δ 6	(1) 36 POSITION	Δ 3	208062-9
OBSOLETE	Δ 6	(1) 4 POSN AND (4) 8 POSN	Δ 2	208062-8
	Δ 5	(1) 36 POSITION	Δ 3	208062-7
	Δ 5	(1) 4 POSN AND (4) 8 POSN	Δ 2	208062-6
OBSOLETE	Δ 4	(1) 36 POSITION	Δ 3	208062-3
	Δ 4	(1) 4 POSN AND (4) 8 POSN	Δ 2	208062-1

THIS DRAWING IS A CONTROLLED DOCUMENT.

DIMENSIONS: mm [INCHES]

TOLERANCES UNLESS OTHERWISE SPECIFIED:

0 PLC	± .
1 PLC	± .
2 PLC	± 0.25[.010]
3 PLC	± .
4 PLC	± .
ANGLES	± .

MATERIAL: SEE CALLOUTS

FINISH: SEE CALLOUTS

WEIGHT: --

CUSTOMER DRAWING

DIN: D.GELTZ 08/13/92

CHK: R.STONE 9-21-92

APVD: --

NAME: --

PRODUCT SPEC: --

APPLICATION SPEC: --

SIZE: A1

CAGE CODE: 00779

DRAWING NO: 208062

RESTRICTED TO: --

SCALE: 2:1

SHEET: 1 OF 1

REV: L

STE TE Connectivity

COMMONING DEVICE ASSEMBLY, 36 POSITION, METRIMATE