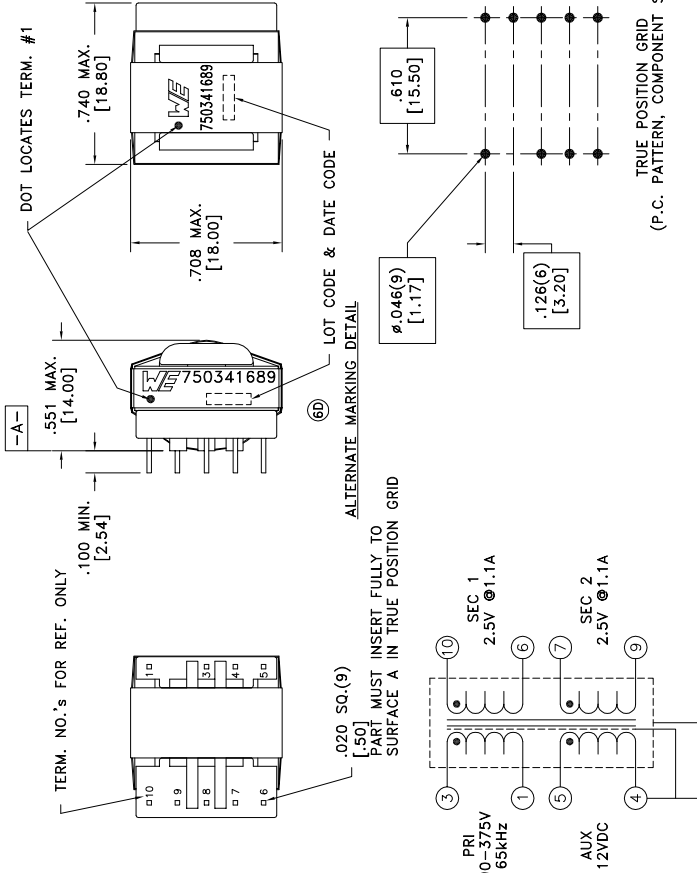


| | | |
|-------------------|------|---------------|
| CUSTOMER TERMINAL | RoHS | LEAD(Pb)-FREE |
| Sn96%, Ag4% | Yes | Yes |



ELECTRICAL SPECIFICATIONS @ 25°C unless otherwise noted:

| PARAMETER | TEST CONDITIONS | VALUE |
|--------------------|---|-----------------|
| D.C. RESISTANCE | 3-1 @20°C | 3.86 ohms max. |
| D.C. RESISTANCE | 5-4 @20°C | 0.400 ohms max. |
| D.C. RESISTANCE | 7-9 @20°C | 0.020 ohms max. |
| D.C. RESISTANCE | 10-6 @20°C | 0.020 ohms max. |
| INDUCTANCE | 3-1 50kHz, 100mVAC, 1s | 1.60mH ±10% |
| LEAKAGE INDUCTANCE | 3-1 tie(4+5, 6+7+9+10), 100kHz, 100mVAC, 1s | 60uH max. |
| DIELECTRIC | 1-10 tie(3+4, 6+7), 3500VAC, 1 second | - |
| DIELECTRIC | 3-Core 2500VAC, 1 second | - |
| DIELECTRIC | 10-Core tie(6+7), 1500VAC, 1 second | - |
| DIELECTRIC | 3-10 tie(6+7), 500VAC, 1 second | - |
| TURNS RATIO | (3-1):(5-4) | 7.056:1, ±2% |
| TURNS RATIO | (3-1):(10-6) | 31.75:1, ±2% |
| TURNS RATIO | (3-1):(7-9) | 31.75:1, ±2% |

GENERAL SPECIFICATIONS:

OPERATING TEMPERATURE RANGE: -40°C to +125°C.

Designed to comply with the following requirements as defined by IEC60950-1, EN60950-1, UL60950-1/CSA60950-1 and AS/NZS60950.1:
 - Reinforced insulation for a working voltage of 400VDC.

Wire insulation & RoHS status not affected by wire color.
 Wire insulation color may vary depending on availability.

| | | | | | | |
|------|-------|---------------------------------------|----------------------|--|--------------------|------------------|
| REV. | DATE | Packaging Specifications | CONVENTION PLACEMENT | Tolerances unless otherwise specified: Angles: ±1° Fractions: ±1/64 Decimals: ±.005 Footprint: ±.001 | DRAWING TITLE | PART NO. |
| 6D | 3/17 | Method: Tray | (6D) | | TRANSFORMER | 750341689 |
| 6C | 3/14 | PKG-0103 www.we-online.com/midcom | | | | |
| 6B | 12/13 | | | | | |
| 6A | 1/13 | SEE REVISION SHEET FOR REVISION LEVEL | | | | |

eIsoS p/n: 750341689 COMPLIANT **RoHS** SPECIFICATION SHEET 1 OF 1