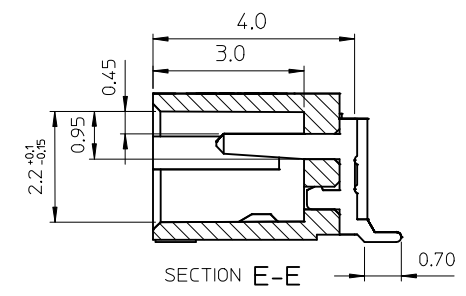
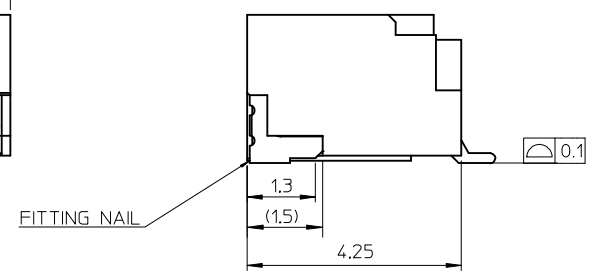
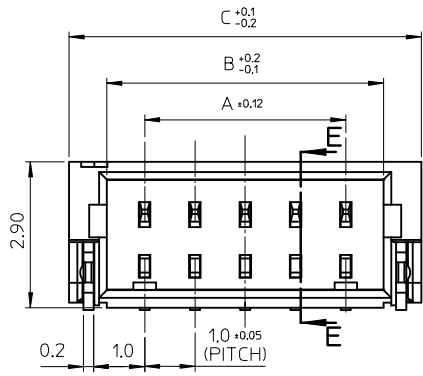
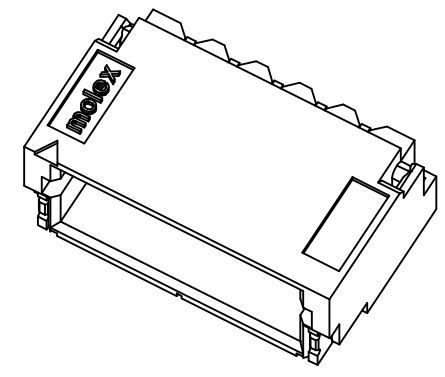
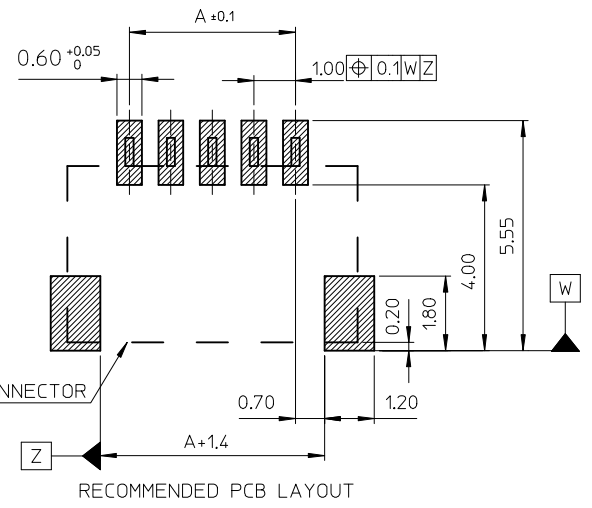
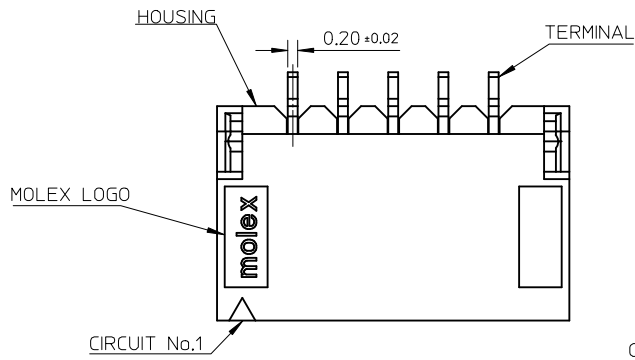


10 9 8 7 6 5 4 3 2 1

F  
E  
D  
C  
B  
A

F  
E  
D  
C  
B  
A



NOTES:  
1.COPLANARITY IS 0.1 mm MAX.  
2.MATERIAL : HOUSING: FOR 48227-XXX1 & 48227-XXX2  
NYLON46,40% GLASS FILLED,UL 94V-0.  
COLOR: SEE TABLE  
FOR 48227-XXX3  
LCP,HALOGEN FREE,  
40% GLASS FILLED,UL 94V-0.  
COLOR: SEE TABLE  
TERMINAL: PHOSPER BRONZE  
FITTING NAIL: PHOSPER BRONZE

3.FINISHES :  
TERMINAL : SEE TABLE  
FITTING NAIL: SEE TABLE  
4.PRODUCT SPECIFICATION REFER TO PS-48226-001  
5.PACKAGING DRAWING REFER TO PK-48227-001  
6.TEST SUMMARY REFER TO TS-48226-001  
7.LEAD FREE AND ROHS COMPLIANT PRODUCT  
8.P/N LEGEND 48227-XXXX

NO OF CKTS \_\_\_\_\_ MATERIAL & COLOR:  
1=NYLON 46, NATURAL(WHITE)  
2=NYLON 46, BLACK  
3=LCP, BLACK  
PLATING \_\_\_\_\_  
0:GOLD FLASH OVER ALL  
1:TIN PLATED (MATTE) OVER ALL  
2:TIN PLATED (BRIGHT) OVER ALL.

MOD. HSG MATERIAL EC NO: SHZ012-0064 DRWN:FYANG05 2011/08/19 CHKD: APPR:RZHANG 2011/09/26	QUALITY SYMBOLS ▽=0 C=0	GENERAL TOLERANCES (UNLESS SPECIFIED)		DIMENSION STYLE MM ONLY		SCALE 10:1	DESIGN UNITS METRIC	THIRD ANGLE PROJECTION	
		mm	INCH	DRAWN BY BERNIE	DATE 2005/11/18	TITLE 1.0 MM WTB RIGHT ANGLE HEADER SMT TYPE	MOLEX INCORPORATED DOCUMENT NO. SD-48227-001 SHEET NO. 1 OF 3		
4 PLACES ± --- ± ---		3 PLACES ± --- ± ---		CHECKED BY ERIC KAO		DATE 2005/11/18			
2 PLACES ± 0.25 ± ---		1 PLACE ± 0.25 ± ---		APPROVED BY WILSON		DATE 2005/11/18		THIS DRAWING CONTAINS INFORMATION THAT IS PROPRIETARY TO MOLEX INCORPORATED AND SHOULD NOT BE USED WITHOUT WRITTEN PERMISSION	
ANGULAR ± 3 °		SEE TABLE		MATERIAL NO.		SIZE A3			

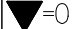
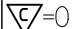
9 8 7 6 5 4 3 2 1

10 9 8 7 6 5 4 3 2 1

MOLEX PART NO.	HOUSING COLOR&MATERIAL	TERMINAL PLATING	FITTING NAIL PLATING	DIMA	DIMB	DIMC	CKT	
48227-0201	NATURE(WHITE) NYLON46	GOLD FLASH OVER ALL THICKNESS : 0.025 MM MIN. NICKEL UNDER PLATED OVER ALL	GOLD FLASH OVER ALL THICKNESS : 0.025 MM MIN. NICKEL UNDER PLATED OVER ALL	1.0	2.4	4.0	2	
48227-0301				2.0	3.4	5.0	3	
48227-0302	BLACK NYLON46			3.0	4.4	6.0	4	
48227-0401	NATURE(WHITE) NYLON46			4.0	5.4	7.0	5	
48227-0501				5.0	6.4	8.0	6	
48227-0601				6.0	7.4	9.0	7	
48227-0701				7.0	8.4	10.0	8	
48227-0801				8.0	9.4	11.0	9	
48227-0901				9.0	10.4	12.0	10	
48227-1001				10.0	11.4	13.0	11	
48227-1101				11.0	12.4	14.0	12	
48227-1201				12.0	13.4	15.0	13	
48227-1301				13.0	14.4	16.0	14	
48227-1401				14.0	15.4	17.0	15	
48227-1501				15.0	16.4	18.0	16	
48227-1601				16.0	17.4	19.0	17	
48227-1701				17.0	18.4	20.0	18	
48227-1801				18.0	19.4	21.0	19	
48227-1901				19.0	20.4	22.0	20	
48227-0211				NATURE(WHITE) NYLON46	TIN PLATED (MATTE) OVER ALL THICKNESS : 2.54 MM MIN. NICKEL UNDER PLATED OVER ALL	TIN PLATED (MATTE) OVER ALL THICKNESS : 2.54 MM MIN. NICKEL UNDER PLATED OVER ALL	1.0	2.4
48227-0311		2.0	3.4	5.0			3	
48227-0312	BLACK NYLON46	3.0	4.4	6.0			4	
48227-0411	NATURE(WHITE) NYLON46	4.0	5.4	7.0			5	
48227-0511		5.0	6.4	8.0			6	
48227-0611		6.0	7.4	9.0			7	
48227-0711		7.0	8.4	10.0			8	
48227-0811		8.0	9.4	11.0			9	
48227-0911								

MOLEX PART NO.	HOUSING COLOR&MATERIAL	TERMINAL PLATING	FITTING NAIL PLATING	DIMA	DIMB	DIMC	CKT
48227-1011	NATURE(WHITE) NYLON46	TIN PLATED (MATTE) OVER ALL THICKNESS : 2.54 MM MIN. NICKEL UNDER PLATED OVER ALL	TIN PLATED (MATTE) OVER ALL THICKNESS : 2.54 MM MIN. NICKEL UNDER PLATED OVER ALL	9.0	10.4	12.0	10
48227-1111				10.0	11.4	13.0	11
48227-1211				11.0	12.4	14.0	12
48227-1311				12.0	13.4	15.0	13
48227-1411				13.0	14.4	16.0	14
48227-1511				14.0	15.4	17.0	15
48227-1611				15.0	16.4	18.0	16
48227-1711				16.0	17.4	19.0	17
48227-1811				17.0	18.4	20.0	18
48227-1911				18.0	19.4	21.0	19
48227-2011	19.0	20.4	22.0	20			
48227-0221	NATURE(WHITE) NYLON46	TIN PLATED (BRIGHT) OVER ALL THICKNESS : 0.025 MM MIN. NICKEL UNDER PLATED OVER ALL	TIN PLATED (BRIGHT) OVER ALL THICKNESS : 0.025 MMR MIN. NICKEL UNDER PLATED OVER ALL	1.0	2.4	4.0	2
48227-0321	2.0			3.4	5.0	3	
48227-0322	BLACK NYLON46			3.0	4.4	6.0	4
48227-0421	NATURE(WHITE) NYLON46			4.0	5.4	7.0	5
48227-0521				5.0	6.4	8.0	6
48227-0621				6.0	7.4	9.0	7
48227-0721				7.0	8.4	10.0	8
48227-0821				8.0	9.4	11.0	9
48227-0921				9.0	10.4	12.0	10
48227-1021				10.0	11.4	13.0	11
48227-1121		11.0	12.4	14.0	12		
48227-1221		12.0	13.4	15.0	13		
48227-1321		13.0	14.4	16.0	14		
48227-1421		14.0	15.4	17.0	15		
48227-1521		15.0	16.4	18.0	16		
48227-1621		16.0	17.4	19.0	17		
48227-1721		17.0	18.4	20.0	18		
48227-1821		18.0	19.4	21.0	19		
48227-1921		19.0	20.4	22.0	20		

SEE SHEET 1  
 EC NO: SH2012-0064  
 DRAWN: YANG05 2011/08/19  
 CHKD: APPR: RZHANG 2011/09/26

QUALITY SYMBOLS  
 =0  
 =0

GENERAL TOLERANCES (UNLESS SPECIFIED)

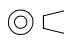
	mm	INCH
4 PLACES	± ---	± ---
3 PLACES	± ---	± ---
2 PLACES	± 0.25	± ---
1 PLACE	± 0.25	± ---
ANGULAR ± 3 °		

DRAFT WHERE APPLICABLE MUST REMAIN WITHIN DIMENSIONS


DIMENSION STYLE  
**MM ONLY**

DRAWN BY	DATE
BERNIE	2005/11/18
CHECKED BY	DATE
ERIC KAO	2005/11/18
APPROVED BY	DATE
WILSON	2005/11/18

MATERIAL NO. SEE TABLE

SCALE 1:1  
 DESIGN UNITS METRIC  
 THIRD ANGLE PROJECTION

TITLE  
**1.0 MM WTB RIGHT ANGLE HEADER SMT TYPE**

 MOLEX INCORPORATED

DOCUMENT NO. SD-48227-001 SHEET NO. 2 OF 3

THIS DRAWING CONTAINS INFORMATION THAT IS PROPRIETARY TO MOLEX INCORPORATED AND SHOULD NOT BE USED WITHOUT WRITTEN PERMISSION

9 8 7 6 5 4 3 2 1

MOLEX PART NO.	HOUSING COLOR&MATERIAL	TERMINAL PLATING	FITTING NAIL PLATING	DIMA	DIMB	DIMC	CKT
48227-0203	BLACK LCP HALOGEN FREE	GOLD FLASH OVER ALL THICKNESS : 0.025 MM MIN. NICKEL UNDER PLATED OVER ALL	GOLD FLASH OVER ALL THICKNESS : 0.025 MM MIN. NICKEL UNDER PLATED OVER ALL	1.0	2.4	4.0	2
48227-0303				2.0	3.4	5.0	3
48227-0403				3.0	4.4	6.0	4
48227-0503				4.0	5.4	7.0	5
48227-0603				5.0	6.4	8.0	6
48227-0703				6.0	7.4	9.0	7
48227-0803				7.0	8.4	10.0	8
48227-0903				8.0	9.4	11.0	9
48227-1003				9.0	10.4	12.0	10
48227-1103				10.0	11.4	13.0	11
48227-1203				11.0	12.4	14.0	12
48227-1303				12.0	13.4	15.0	13
48227-1403				13.0	14.4	16.0	14
48227-1503				14.0	15.4	17.0	15
48227-1603				15.0	16.4	18.0	16
48227-1703				16.0	17.4	19.0	17
48227-1803				17.0	18.4	20.0	18
48227-1903				18.0	19.4	21.0	19
48227-2003				19.0	20.4	22.0	20
48227-0213				BLACK LCP HALOGEN FREE	TIN PLATED (MATTE) OVER ALL THICKNESS : 2.54 MM MIN. NICKEL UNDER PLATED OVER ALL	TIN PLATED (MATTE) OVER ALL THICKNESS : 2.54 MM MIN. NICKEL UNDER PLATED OVER ALL	1.0
48227-0313	2.0	3.4	5.0				3
48227-0413	3.0	4.4	6.0				4
48227-0513	4.0	5.4	7.0				5
48227-0613	5.0	6.4	8.0				6
48227-0713	6.0	7.4	9.0				7
48227-0813	7.0	8.4	10.0				8
48227-0913	8.0	9.4	11.0				9

MOLEX PART NO.	HOUSING COLOR&MATERIAL	TERMINAL PLATING	FITTING NAIL PLATING	DIMA	DIMB	DIMC	CKT			
48227-1013	BLACK LCP HALOGEN FREE	TIN PLATED (MATTE) OVER ALL THICKNESS : 2.54 MM MIN. NICKEL UNDER PLATED OVER ALL	TIN PLATED (MATTE) OVER ALL THICKNESS : 2.54 MM MIN. NICKEL UNDER PLATED OVER ALL	9.0	10.4	12.0	10			
48227-1113				10.0	11.4	13.0	11			
48227-1213				11.0	12.4	14.0	12			
48227-1313				12.0	13.4	15.0	13			
48227-1413				13.0	14.4	16.0	14			
48227-1513				14.0	15.4	17.0	15			
48227-1613				15.0	16.4	18.0	16			
48227-1713				16.0	17.4	19.0	17			
48227-1813				17.0	18.4	20.0	18			
48227-1913				18.0	19.4	21.0	19			
48227-2013				19.0	20.4	22.0	20			
48227-0223				BLACK LCP HALOGEN FREE	TIN PLATED (BRIGHT) OVER ALL THICKNESS : 2.54 MM MIN. NICKEL UNDER PLATED OVER ALL	TIN PLATED (BRIGHT) OVER ALL THICKNESS : 2.54 MM MIN. NICKEL UNDER PLATED OVER ALL	1.0	2.4	4.0	2
48227-0323							2.0	3.4	5.0	3
48227-0423							3.0	4.4	6.0	4
48227-0523							4.0	5.4	7.0	5
48227-0623							5.0	6.4	8.0	6
48227-0723							6.0	7.4	9.0	7
48227-0823							7.0	8.4	10.0	8
48227-0923							8.0	9.4	11.0	9
48227-1023							9.0	10.4	12.0	10
48227-1123	10.0	11.4	13.0				11			
48227-1223	11.0	12.4	14.0	12						
48227-1323	12.0	13.4	15.0	13						
48227-1423	13.0	14.4	16.0	14						
48227-1523	14.0	15.4	17.0	15						
48227-1623	15.0	16.4	18.0	16						
48227-1723	16.0	17.4	19.0	17						
48227-1823	17.0	18.4	20.0	18						
48227-1923	18.0	19.4	21.0	19						
48227-2023	19.0	20.4	22.0	20						

SEE SHEET1 EC NO: SH2012-0064 DRW: FYANG05 2011/08/19 CHKD: APPR: RZHANG 2011/09/26 REV DESCRIPTION	QUALITY SYMBOLS	GENERAL TOLERANCES (UNLESS SPECIFIED)	DIMENSION STYLE	SCALE	DESIGN UNITS	THIRD ANGLE PROJECTION
	$\nabla = 0$ $\sphericalangle = 0$	mm INCH 4 PLACES ± --- ± --- 3 PLACES ± --- ± --- 2 PLACES ± 0.25 ± --- 1 PLACE ± 0.25 ± --- ANGULAR ± 3 °	MM ONLY	1:1	METRIC	
		DRAWN BY DATE BERNIE 2005/11/18 CHECKED BY DATE ERIC KAO 2005/11/18 APPROVED BY DATE WILSON 2005/11/18 MATERIAL NO.	TITLE		1.0 MM WTB RIGHT ANGLE HEADER SMT TYPE	
		DRAFT WHERE APPLICABLE MUST REMAIN WITHIN DIMENSIONS	SEE TABLE SIZE A3 THIS DRAWING CONTAINS INFORMATION THAT IS PROPRIETARY TO MOLEX INCORPORATED AND SHOULD NOT BE USED WITHOUT WRITTEN PERMISSION	MOLEX MOLEX INCORPORATED DOCUMENT NO. SD-48227-001 SHEET NO. 3 OF 3		