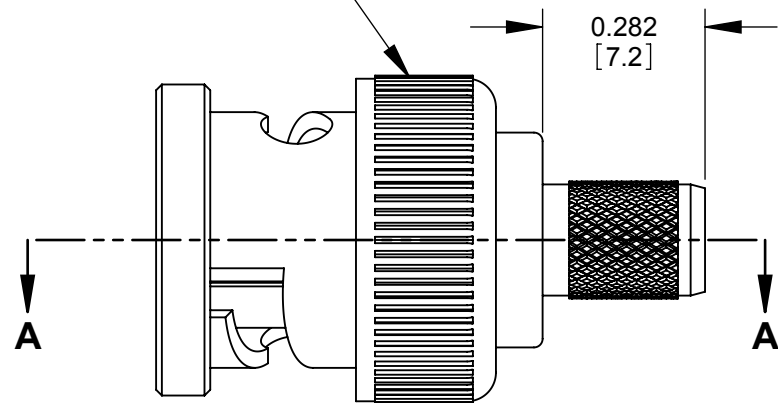


BNC CONNECTOR ASSEMBLY

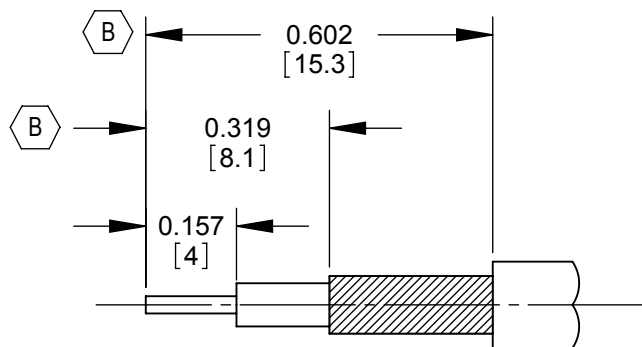
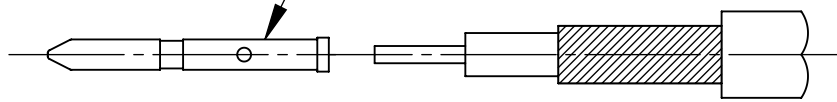


0.282
[7.2]

A

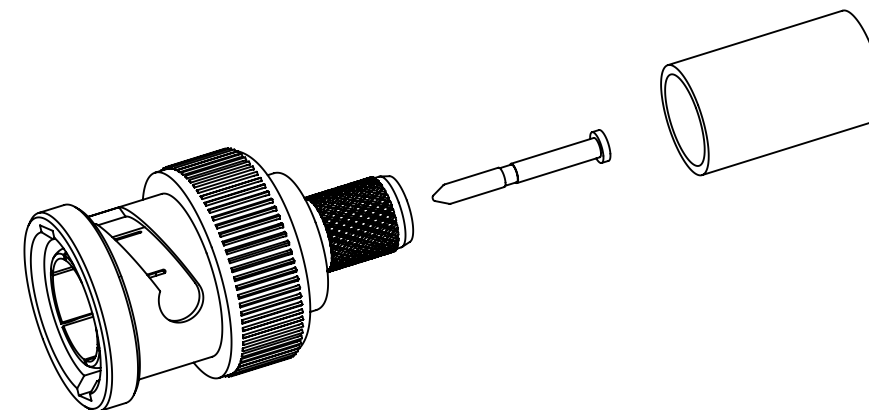
A

CRIMP ON THIS AREA



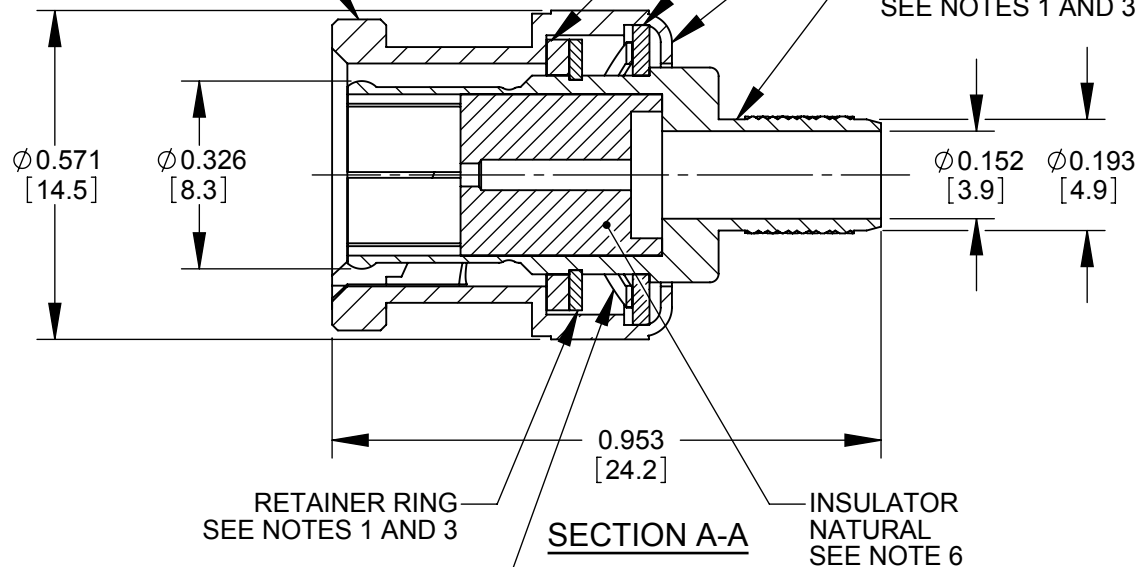
RECOMMENDED
CABLE STRIPPING DIMENSIONS

SWITCHCRAFT STRIPPING TOOL #PTS1



SHELL
SEE NOTES 1 AND 3

GASKET
RUBBER, RED
WASHER
SEE NOTES 2 AND 3
FORMING
BODY
SEE NOTES 1 AND 3

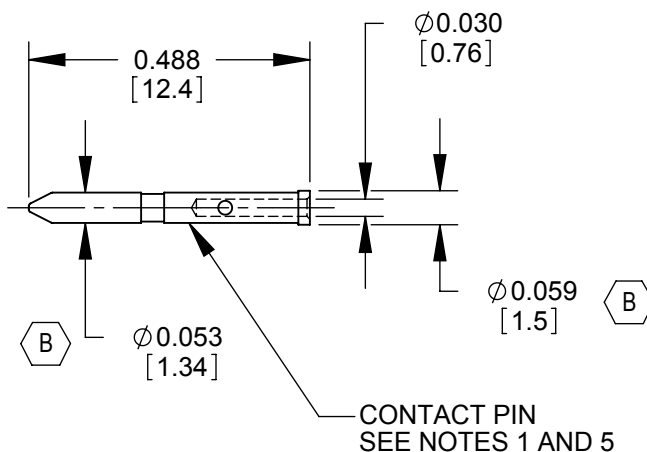


Ø0.571 [14.5] Ø0.326 [8.3] Ø0.152 [3.9] Ø0.193 [4.9]

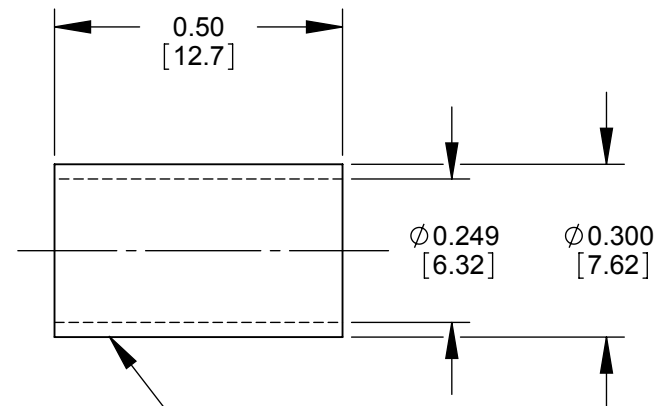
RETAINER RING
SEE NOTES 1 AND 3
SPRING
SK5
SEE NOTE 4
INSULATOR
NATURAL
SEE NOTE 6

SECTION A-A

0.953
[24.2]



CONTACT PIN
SEE NOTES 1 AND 5



FERRULE
SEE NOTES 3 AND 7

NOTES:

FINISH (PLATING THICKNESS IN MICRO-INCHES)

- BRASS PER 00-8-626
- BRASS PER 00-8-613
- NICKEL PLATING 100 MIN THICK OVER COPPER STRIKE.
- NICKEL PLATING 200 MIN THICK OVER COPPER STRIKE.
- GOLD PLATING 3 MIN THICK OVER NICKEL PLATING 100 MIN THICK OVER COPPER STRIKE.
- TEFLON MIL-P-19468
- JIS H 3250, C 2700
- CRIMPED FERRULE HEX CRIMP SIZE 0.255 B
- CRIMPED CONTACT PIN SQUARE SQUARE CRIMP SIZE 0.042 B
- ALL DIMENSIONS ARE FOR REFERENCE ONLY.
- THIS PRODUCT IS RoHS COMPLIANT.

CUSTOMER DRAWING

					★ STAR SYMBOL DENOTES CRITICAL DIMENSION		THIS DRAWING DESCRIBES A DESIGN CONSIDERED PROPRIETARY IN NATURE, DEVELOPED AND MANUFACTURED BY SWITCHCRAFT INC. AND IS RELEASED ON A CONFIDENTIAL BASIS FOR IDENTIFICATION PURPOSES ONLY.				
					UNLESS OTHERWISE SPECIFIED		SIZE	WIDTH	MULT	LBS/M	TEMPER
					1. ALL DIMENSIONS IN INCHES - TWO PLACE DECIMALS ±0.01 - THREE PLACE DECIMALS ±0.005 - ANGLES ±1° - ALL DIA. CONCENTRIC WITHIN 0.005 T.I.R.		FINISH		MATERIAL		
					2. FEATURES ON THE SAME CENTERLINE MUST BE ALIGNED WITHIN ±0.002		SPEC No.		SPEC No.		
					3. REMOVE ALL BURRS		FIRST USED ON		SCALE 3:1		
B	26364	10-31-06	RS	TJK	DO NOT SCALE DRAWING		DATE DRAWN	BY	CHKD	APVD	Switchcraft [®]
A	26142	10-31-06	RF	TJK			10-31-06	RF	RF	TJK	
REV	ECO NUMBER	DATE	BY	APVD			NAME		PART No.		REV
REVISIONS							75 OHM BNC CONNECTOR 8241 CABLE, RoHS		HP75BNC1X		B

SolidWorks CAD File B