



**Super Fast Shipping**  
from just £2.99



**Five Star Service**  
69,000+ reviews



**No Quibble Returns**  
[support portal](#)



**Next Day Delivery**  
order by 2pm\*

# ZeroDock Assembly Instructions

Dec 20, 2019



Share



This guide will show you how to assemble the [ZeroDock](#) for the [Raspberry Pi Zero](#). All you'll need is a simple cross-head screwdriver.

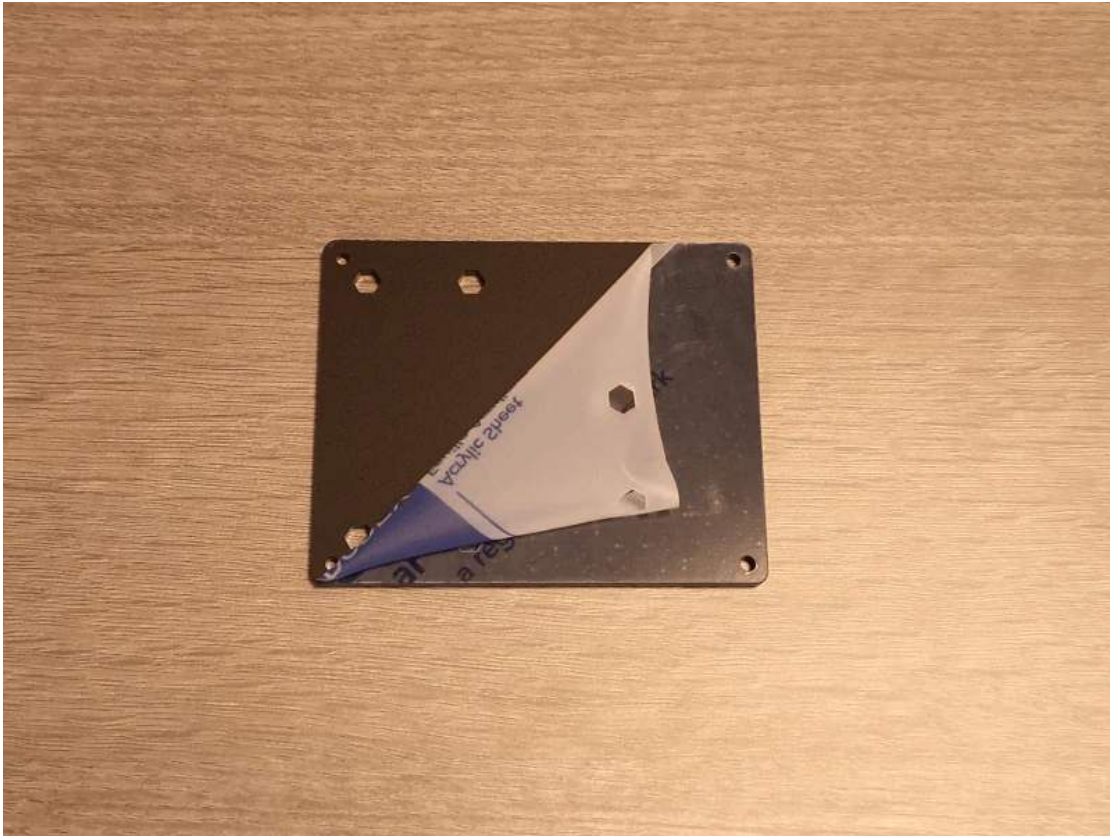
**Step 1** – Open up the box! You should find 4 perspex layers, a bag of fixings and a mini breadboard:



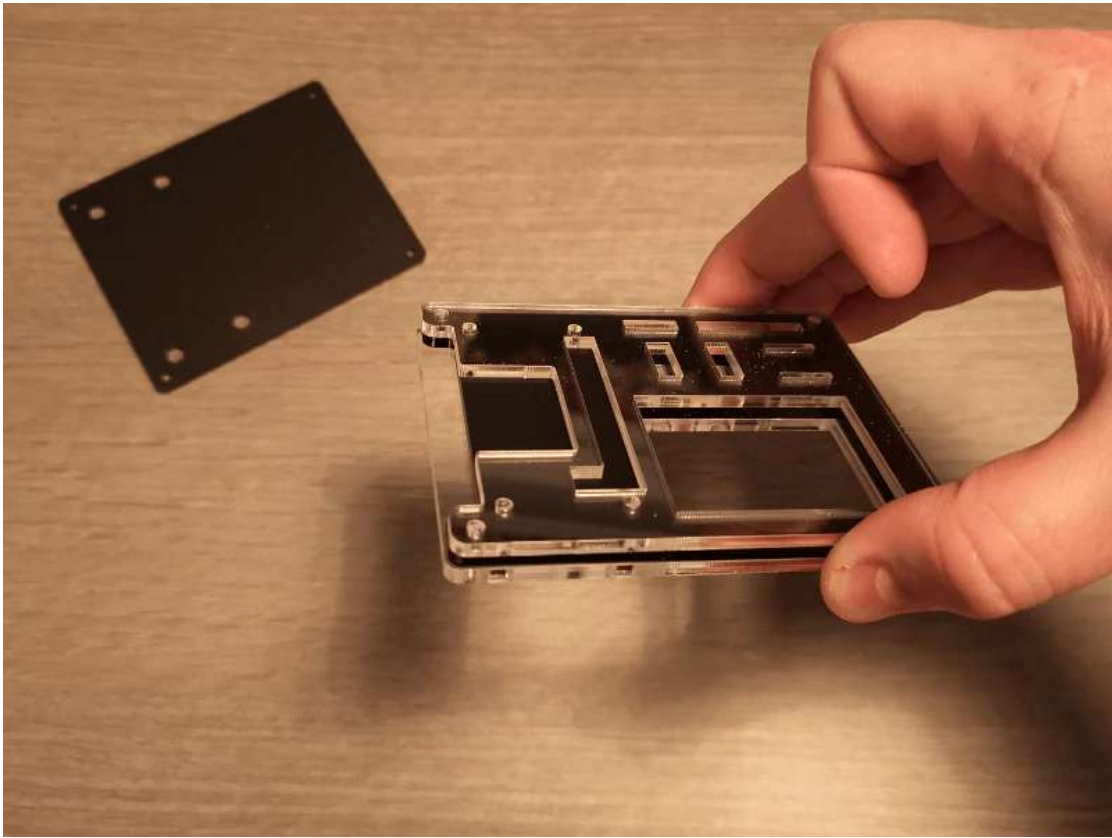
**Step 2** – Make a note of the layer order and orientation. Here we've placed the layers in order. The bottom layer is top-left, then top-right, bottom left and finally bottom right. Notice the breadboard cut-out is in the lower-right position:



**Step 3** – Peel the protective film off of both sides of all layers and clean off any dust:



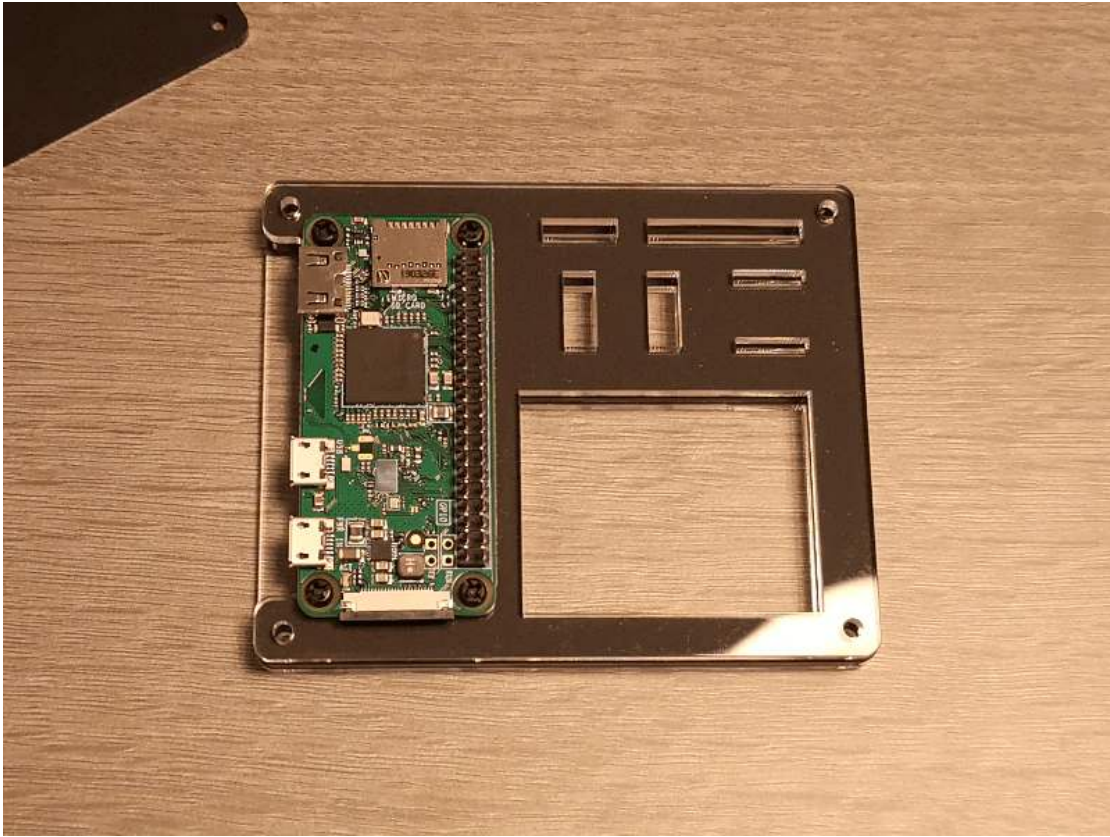
**Step 4** – Leave the bottom layer to the side and stack the remaining layers in order:



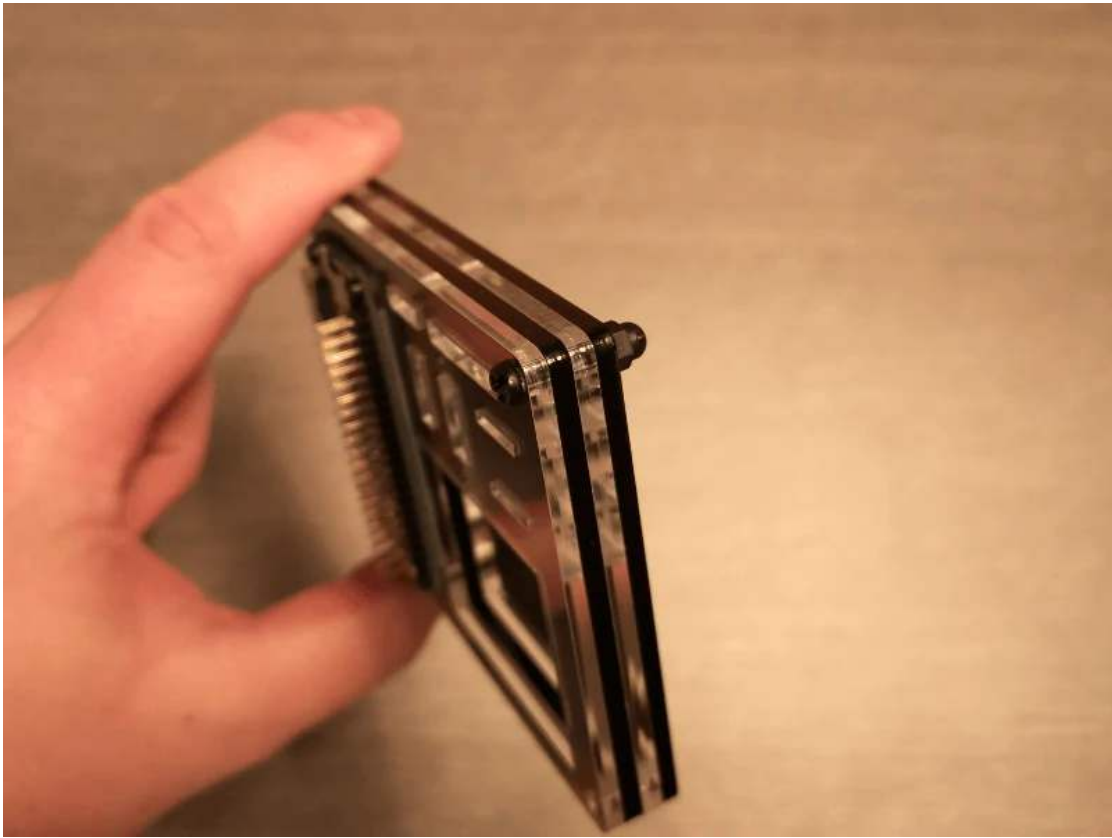
**Step 5** – Turn the stack around and place a plastic nut in one of the nut cut-outs. Holding the nut in place with a finger, turn the stack back around, place your Raspberry Pi Zero in place, then use one of the shorter/smaller screws to secure the Raspberry Pi in place:



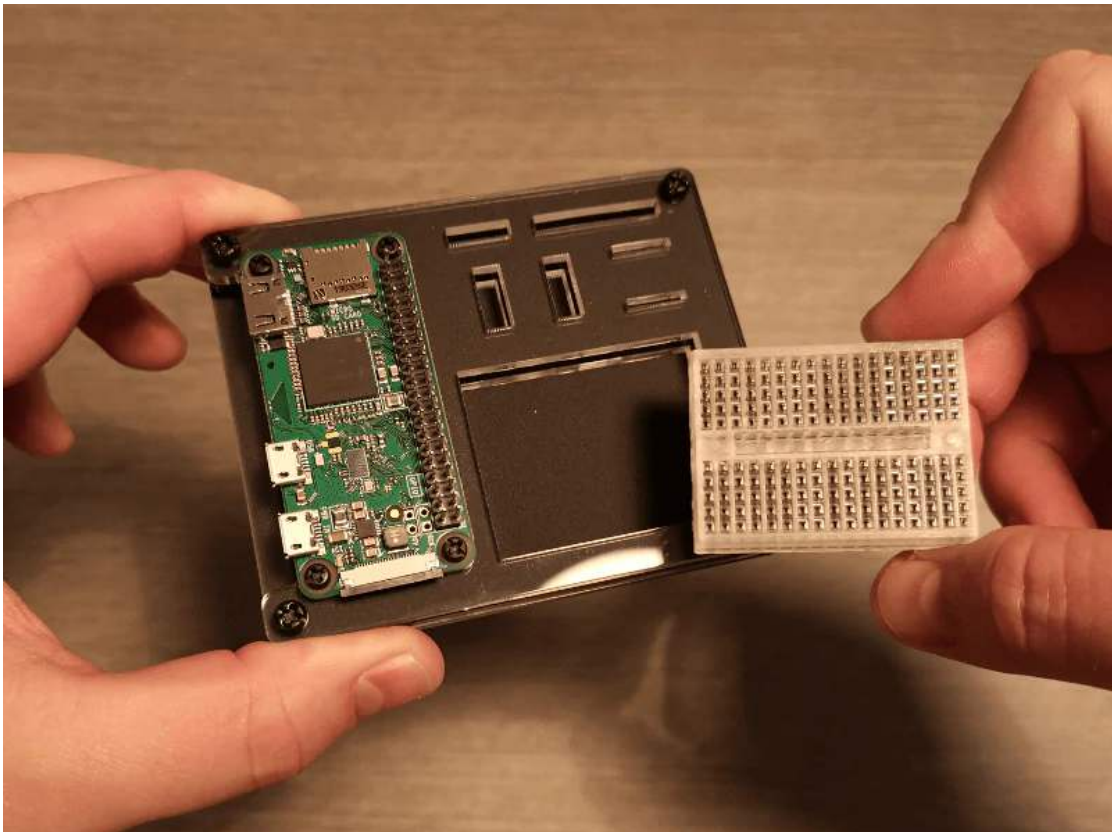
**Step 6** – Repeat this process for each of the Raspberry Pi Zero fixings:



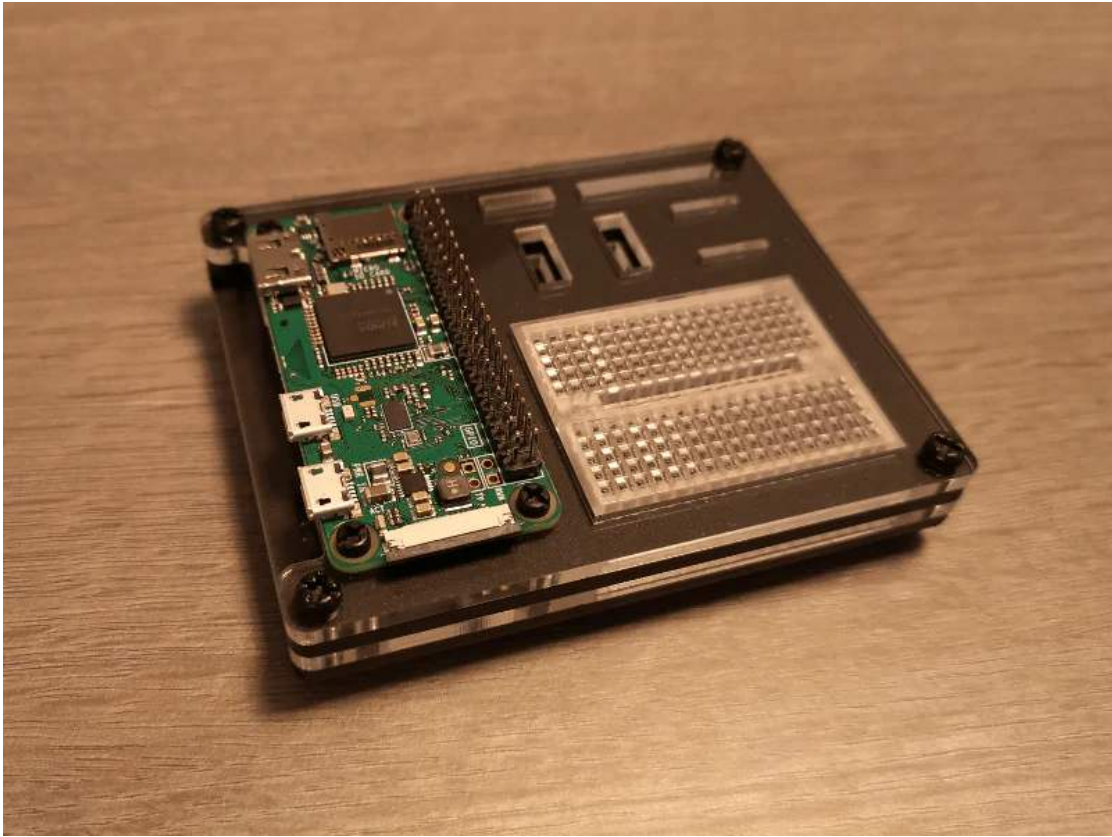
**Step 7** – Add the bottom layer to the stack and secure in place with the remaining fixings. The rounded nut should be on the underside. Repeat this for all corners of the ZeroDock:



**Step 8** – Add the breadboard. Either just pop it in place, or remove the rear film to stick it in place using the adhesive backing:



**Step 9** – Admire your work, then go make a cool project!



Share    

[< Previous article](#)

[Next article >](#)

Related Posts

## Popular Tutorials



**Using IFTTT with the Raspberry Pi**

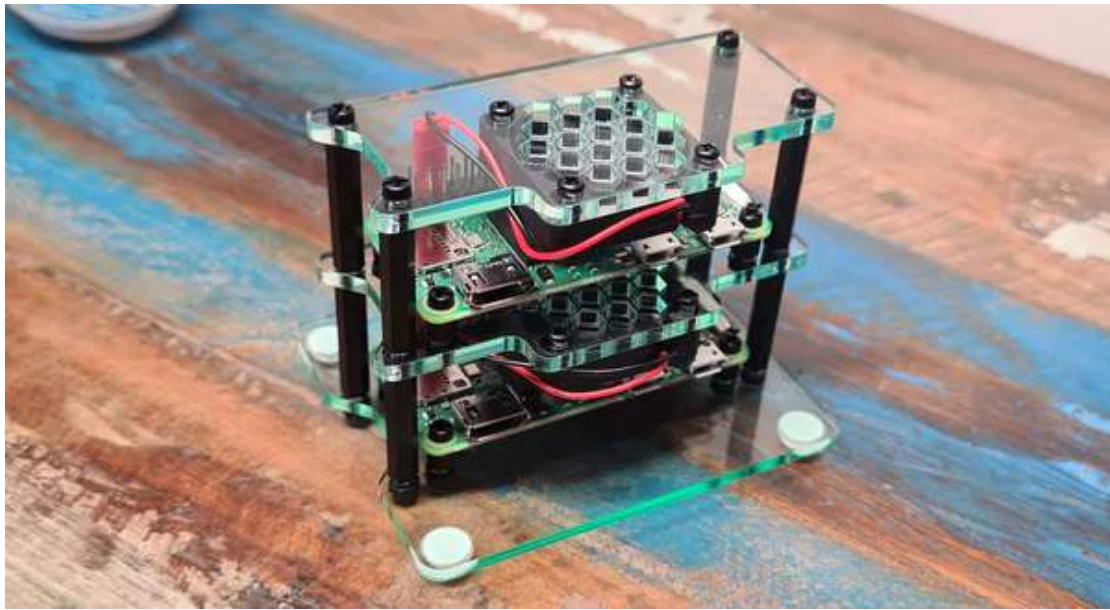
Nov 11, 2018



### SSD Base Enclosure Assembly Guide

This guide will show you how to assemble the SSD Base Enclosure for Argon ONE Cases. All you'll need is a simple cross...

**READ MORE**



### Mini Cluster Case for Raspberry Pi Zero 2 Assembly Instructions

This guide will show you how to assemble the Mini Cluster Case for Raspberry Pi Zero 2. All you'll need is a simple c...

**READ MORE**

Subscribe to our newsletter





Sense HAT Case for Raspberry Pi Assembly Guide

How to assemble our Sense HAT Case for Raspberry Pi. What you need Raspberry Pi 4 Model B Raspberry Pi Sense HAT Sen...

**READ MORE**

Your email

**SUBSCRIBE**

This site is protected by reCAPTCHA and the Google Privacy Policy and Terms of Service apply.

**HANDY LINKS**

Search

All Products

FAQs

**GOT ANY QUESTIONS?**

Contact Us / Support Portal

Can I Cancel My Order?

Has My Order Shipped Yet?

Where Is My Order?

Do You Ship To {insert country name}

How Much Is Shipping?

**TERMS & CONDITIONS**

Be among the first to hear about new product launches, discount codes and more!

[Delivery](#)

[Privacy Statement](#)

[Policies](#)

[Terms of Service](#)

[Klarna FAQ](#)

[Company Info](#)

**OUR STORE SECTIONS**

[Raspberry Pi](#)

[Arduino](#)

[Maker Store](#)

[micro:bit](#)

**FOLLOW US!**



We Accept



© The Pi Hut