

6

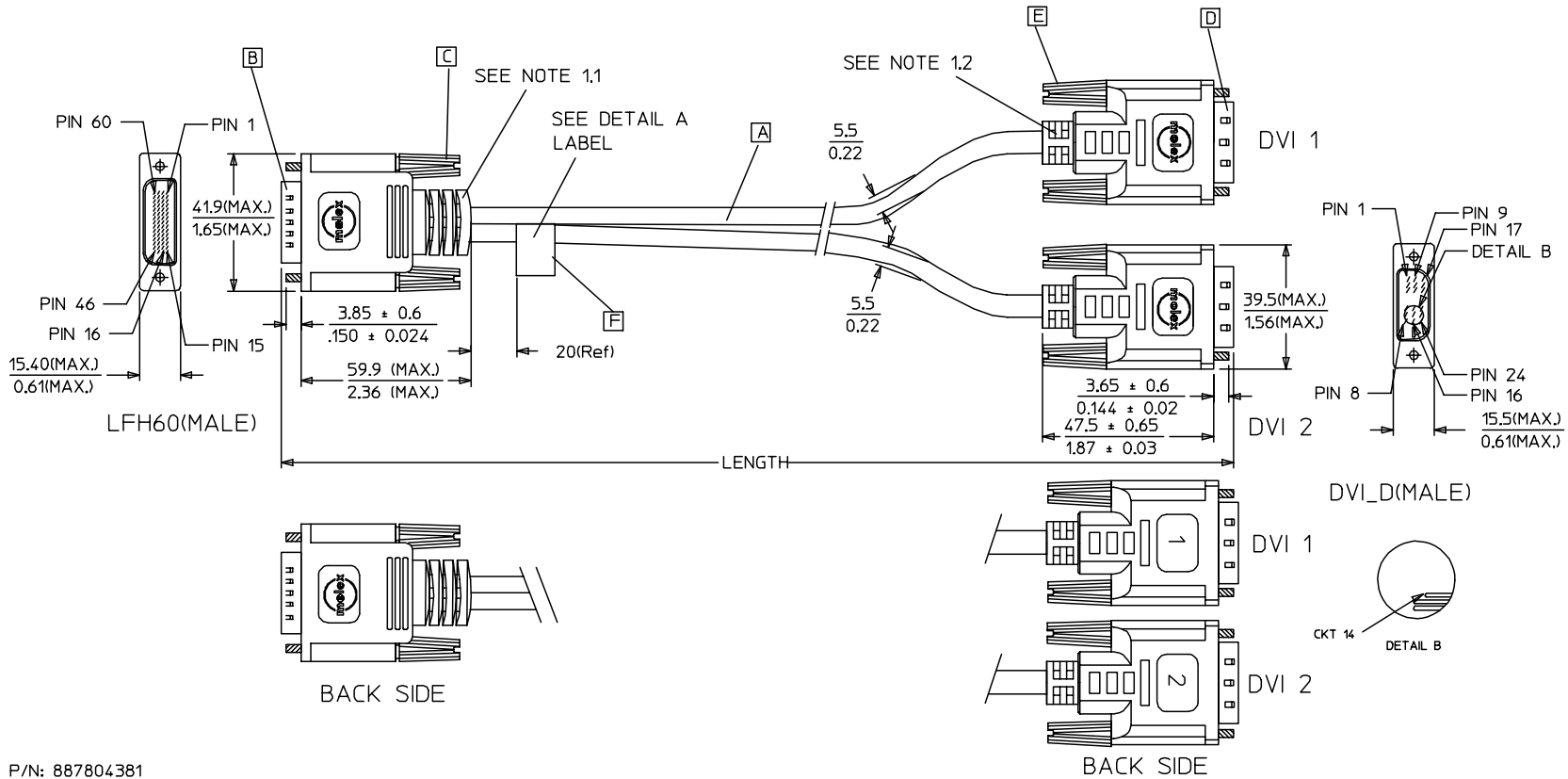
5

4

3

2

1



P/N: 887804381

MOLEX P/N:  
887-6676-XX  
REV.B

DETAIL A

EC NO. DRWN: PDAI CHK: APPR:	04/06/11	EC NO. DRWN: METTLE03/03/06 CHK: APPR:	03/03/06	EC NO. DRWN: MACKY CHK: APPR:	02/08/01	EC NO. DRWN: MACKY CHK: APPR:	02/07/03	DESCRIPTION	QUALITY SYMBOLS	GENERAL TOLERANCES: (UNLESS SPECIFIED)		SCALE N.S.T	DESIGN UNITS <input checked="" type="checkbox"/> mm <input type="checkbox"/> INCH	THIRD ANGLE PROJECTION	DIMENSIONS:			SHT	REV	
										mm	INCH				<input type="checkbox"/> mm <input type="checkbox"/> INCH	<input type="checkbox"/> mm <input type="checkbox"/> ONLY	REVISE ON CAD ONLY			
C		B1		B		A		MAJOR ▼ = 0 CRITICAL ▽ = 5	4 PLACES	∕.	∕.									
									3 PLACES	∕.	X.									
									2 PLACES	∕.	∕.									
									1 PLACE	∕.	∕.									
									ANGULAR: ∕ °											
										DRAWN BY & DATE METTLE 03/03/06		TITLE: LFH60(M) TO TWO DVI-D(M) CABLE ASS'Y								
										CHECKED BY & DATE MACKY 03/03/06		MOLEX INCORPORATED								
										APPROVED BY & DATE T.WONG 03/03/06		CAD FILENAME S88744BB.S01			MATERIAL NO. SEE TABLE A		DRAWING NO. SD-88744-028		SHEET NO. 1 OF 3	
										THIS DRAWING CONTAINS INFORMATION THAT IS PROPRIETARY TO MOLEX INCORPORATED AND SHOULD NOT BE USED WITHOUT WRITTEN PERMISSION.										
										SIZE A4										

WBORD\_A.BOR REV A  
97/05/14 LEVEL 3

6

5

4

3

2

1

## WIRING DIAGRAM:

SHIELD	SHIELD	GROUND
PIN 24	PIN 32	DVI1_TXC-
PIN 23	PIN 31	DVI1_TXC+
PIN 22	PIN 57	DVI1_TXC RTN
PIN 19	PIN 33	DVI1_TX0 RTN
PIN 18	PIN 29	DVI1_TX0+
PIN 17	PIN 30	DVI1_TX0-
PIN 16	PIN 36	DVI1_HPD
PIN 15	PIN 54	SYNCS
PIN 14	PIN 5	+5V
PIN 11	PIN 34	DVI1_TX1 RTN
PIN 10	PIN 27	DVI1_TX1+
PIN 9	PIN 28	DVI1_TX1-
PIN 7	PIN 7	DVI1_SDA
PIN 6	PIN 6	DVI1_SCL
PIN 3	PIN 35	DVI1_TX2 RTN
PIN 2	PIN 25	DVI1_TX2+
PIN 1	PIN 26	DVI1_TX2-
DVI 1	LFH60	CABLE FUNCTION

SHIELD	SHIELD	GROUND
PIN 24	PIN 44	DVI2_TXC-
PIN 23	PIN 45	DVI2_TXC+
PIN 22	PIN 49	DVI2_TXC RTN
PIN 19	PIN 43	DVI2_TX0 RTN
PIN 18	PIN 16	DVI2_TX0+
PIN 17	PIN 17	DVI2_TX0-
PIN 16	PIN 40	DVI2_HPD
PIN 15	PIN 52	SYNCS
PIN 14	PIN 11	+5V
PIN 11	PIN 42	DVI2_TX1 RTN
PIN 10	PIN 18	DVI2_TX1+
PIN 9	PIN 19	DVI2_TX1-
PIN 7	PIN 9	DVI2_SDA
PIN 6	PIN 10	DVI2_SCL
PIN 3	PIN 41	DVI2_TX2 RTN
PIN 2	PIN 20	DVI2_TX2+
PIN 1	PIN 21	DVI2_TX2-
DVI 2	LFH60	CABLE FUNCTION

EC NO.	DRWN: PDAI	04/06/11	EC NO.	DRWN: METTLE	03/03/06	EC NO.	DRWN: MACKY	02/08/01	EC NO.	DRWN: MACKY	02/07/03	DESCRIPTION	QUALITY SYMBOLS	GENERAL TOLERANCES: (UNLESS SPECIFIED)	SCALE N.S.T	DESIGN UNITS <input checked="" type="checkbox"/> mm <input type="checkbox"/> INCH	THIRD ANGLE PROJECTION	DIMENSIONS: <input checked="" type="checkbox"/> mm <input type="checkbox"/> INCH <input type="checkbox"/> mm ONLY	SHT	REV
C	CH'K: APPR:		B1	CH'K: APPR:		B	CH'K: APPR:		A	CH'K: APPR:		REV	MAJOR ▼ = 0 CRITICAL ▽ = 5	4 PLACES ±0. <del>±.</del> 3 PLACES ±0. <del>±.</del> 2 PLACES ±0. <del>±.</del> 1 PLACE ±0. <del>±.</del>				<input checked="" type="checkbox"/> mm <input type="checkbox"/> INCH <input type="checkbox"/> mm ONLY		
													DRAWN BY & DATE METTLE 03/03/06		TITLE: LFH60(M) TO TWO DVI-D(M) CABLE ASS'Y					
													CHECKED BY & DATE MACKY 03/03/06		MOLEX INCORPORATED					
													APPROVED BY & DATE T.WONG 03/03/06							
													CAD FILENAME S88744BB.S02		MATERIAL NO. SEE TABLE A		DRAWING NO. SD-88744-028		SHEET NO. 2 OF 3	
													THIS DRAWING CONTAINS INFORMATION THAT IS PROPRIETARY TO MOLEX INCORPORATED AND SHOULD NOT BE USED WITHOUT WRITTEN PERMISSION.						SIZE A4	

6

5

4

3

2

1

## MATERIAL LIST:

F	LABEL		I
E	DVI THUMB SCREW (4-40UNC)		4
D	DVI_D SINGLE CHANNEL G/F CONNECTOR		2
C	LFH SCREW (4-40UNC)		2
B	LFH-60 PLUG ASSEMBLY		1
A	DVI-D SINGLE LINK CABLE		2
ITEM	DESCRIPTION	L	QTY.

TABLE A

88766-7610	LFH60(M) TO TWO DVI-D(M) S/L CABLE 3M	3000±60
88766-7600	LFH60(M) TO TWO DVI-D(M) S/L CABLE 2M	2000±50
MX-P/N	DESCRIPTION	LENGTH

## NOTE:1. OVERMOLD SPECIFICATION

1.1 LFH60 BOOT MOLDED WITH BLACK PVC RESIN,UL 94V-0.

1.2 DVI BOOT MOLDED WITH SNOW PVC RESIN,UL 94V-0.

## 2. MECHANICAL SPECIFICATION

▽2.1 CABLE SHOULD STAND THE PULL FORCE 89-11IN FOR 30 SECONDS WITH NO VISIBLE TERMINATION DAMAGE.

2.2 CABLE SHOULD PASS THE FLEX TEST IN 100 CYCLES AT EACH OF PLANES, PER EIA 364-41, CONDITION 1.

## 3. PRODUCT ELECTRICAL SPECIFICATION

▽3.1 DIELECTRIC STRENGTH: 500V DC FOR 10mS.

▽3.2 INSULATION RESISTANCE: 100 MEGA Ohms(MIN.).

▽3.3 CONTACT RESISTANCE: 2 Ohms(MAX.).

▽3.4 DIFFERENTIAL LINES CHARACTERISTIC IMPEDANCE: 100±7 Ohms @TDR.

3.5 SIGNALS CROSSTALK(FEXT) : 5% (MAX.) PER ANSI/EIA-364-90.

3.6 SIGNALS INTRA-PAIR SKEW (PER CABLE): &lt;150 ps.

4. CONNECTOR PLATING: AU FLASH.

5.SHORTCIRCUIT AMONG DRAIN WIRES IS ACCEPTABLE.

EC NO.				QUALITY SYMBOLS	GENERAL TOLERANCES: (UNLESS SPECIFIED)		SCALE N.S.T	DESIGN UNITS <input checked="" type="checkbox"/> mm <input type="checkbox"/> INCH	THIRD ANGLE PROJECTION	DIMENSIONS: <input checked="" type="checkbox"/> mm <input type="checkbox"/> INCH <input type="checkbox"/> mm ONLY			SHT	REV
C	DRWN: PDAI CHK: APPR:	04/06/11		MAJOR ▼ = 0	4 PLACES	<del>±0.</del>	<del>±.</del>	DRAWN BY & DATE METTLE 03/03/06	TITLE: LFH60(M) TO TWO DVI-D(M) CABLE ASS'Y	MOLEX INCORPORATED	MATERIAL NO. SEE TABLE A	DRAWING NO. SD-88744-028	SHEET NO. 3 OF 3	SIZE A4
B1	DRWN: METTLE CHK: APPR:	03/03/06	CRITICAL ▽ = 5	3 PLACES	<del>±0.</del>	<del>±.</del>	CHECKED BY & DATE MACKY 03/03/06							
B	DRWN: MACKY CHK: APPR:	02/08/01		2 PLACES	<del>±0.</del>	<del>±.</del>	APPROVED BY & DATE T.WONG 03/03/06							
A	DRWN: MACKY CHK: APPR:	02/07/03			1 PLACE	<del>±0.</del>	<del>±.</del>	CAD FILENAME S88744BB.S03						
REV	DESCRIPTION	ANGULAR: ± °		THIS DRAWING CONTAINS INFORMATION THAT IS PROPRIETARY TO MOLEX INCORPORATED AND SHOULD NOT BE USED WITHOUT WRITTEN PERMISSION.										