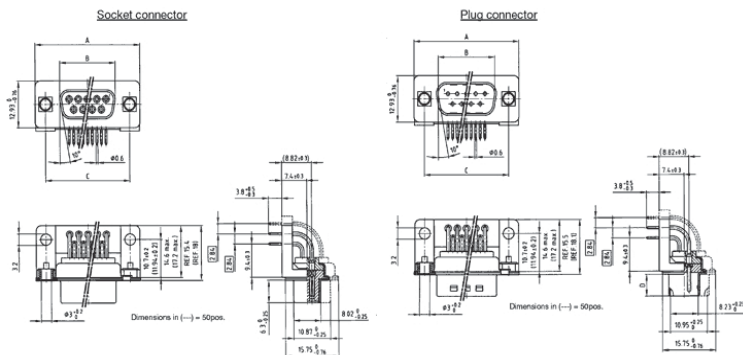


D-Sub Connector  
Solder pin angled .370"  
with mounting bracket  
and through hole



( click on the schematic(s) for a more detailed view )



Socket connector:

No. of pos.	A -0,76	B-0,25	C
9	31,19	16,46	25,00 <sup>+0,12</sup> <sub>-0,12</sub>
15	39,52	24,79	33,30 <sup>+0,15</sup> <sub>-0,15</sub>
25	53,42	38,50	47,04 <sup>+0,13</sup>
37	69,70	54,96	63,50 <sup>+0,13</sup>
50	67,31	52,55	61,10 <sup>+0,14</sup> <sub>-0,11</sub>

Plug connector:

No. of pos.	A -0,76	B+0,25	C	D -0,30
9	31,19	16,79	25,00 <sup>+0,12</sup> <sub>-0,12</sub>	6,12
15	39,52	25,12	33,30 <sup>+0,15</sup> <sub>-0,15</sub>	6,12
25	53,42	38,84	47,04 <sup>+0,13</sup>	5,99
37	69,70	55,30	63,50 <sup>+0,13</sup>	5,99
50	67,31	52,68	61,10 <sup>+0,14</sup> <sub>-0,11</sub>	5,99

Part Numbers

No. of Pos.	Socket connector	
	yellow zinc	tin-plated
9	162 A 10669 X	164 A 10669 X
15	162 A 10679 X	164 A 10679 X
25	162 A 10689 X	164 A 10689 X
37	162 A 10699 X	164 A 10699 X
50	162 A 10709 X	164 A 10709 X

No. of Pos.	Plug connector	
	yellow zinc	tin-plated with ground indent
9	161 A 10669 X	163 A 11719 X
15	161 A 10679 X	163 A 11729 X
25	161 A 10689 X	163 A 11739 X
37	161 A 10699 X	163 A 11749 X
50	161 A 10709 X	163 A 11759 X

