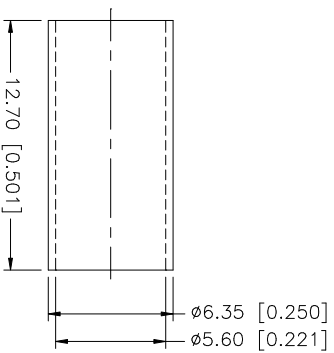
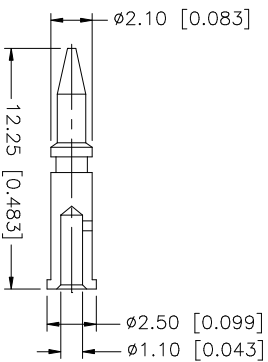
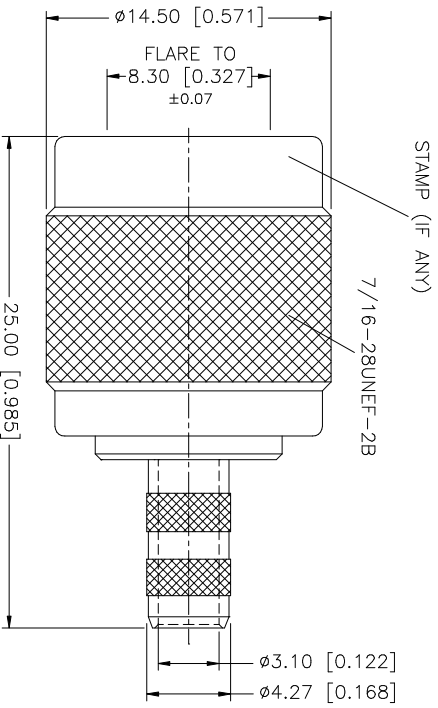
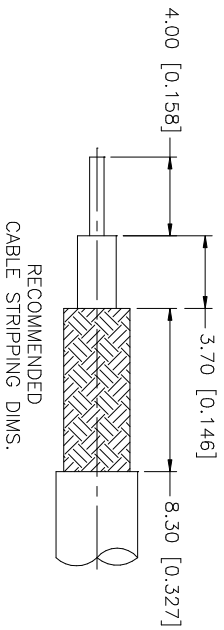


REV.	DATE	DESCRIPTION
A	12/23/02	MODIFY CONTACT PIN LENGTH



- NOTE:
1. CRIMPED FERRULE
HEX CRIMP SIZE .213"
 2. CRIMPED CONTACT PIN
HEX CRIMP SIZE .068"

QTY	DESCRIPTION	MATERIAL	FINISH	QTY	DO NOT SCALE DRAWING	APPROVALS	DATE	PART DESCRIPTION					
1	STAMP (IF ANY)												
1	7/16-28UNEF-2B												
1	CRIMPED CONTACT PIN												
1	HEX CRIMP SIZE .068"												
1	CRIMPED FERRULE												
1	HEX CRIMP SIZE .213"												
1	INSULATOR												
1	DELRIN												
1	GASKET												
1	RUBBER												
1	FERRULE												
1	COPPER												
1	NICKEL												
1	CONTACT PIN												
1	BRASS												
1	SHELL/BODY												
1	BRASS												
1	GOLD												
1	NICKEL												
1	DESCRIPTION												
<p>UNLESS OTHERWISE SPECIFIED DIMENSIONS ARE IN MILLIMETERS DIMENSIONS IN [] ARE IN INCHES AND FOR CUSTOMER REFERENCE ONLY.</p> <p>UNLESS OTHERWISE SPECIFIED TOLERANCES FOR MILLIMETERS ARE:</p> <p>0.5 - 8mm ± 0.20mm</p> <p>8 - 30mm ± 0.40mm</p> <p>30 - 120mm ± 0.50mm</p> <p>UNLESS OTHERWISE SPECIFIED TOLERANCES FOR INCHES ARE:</p> <p>.020 - .315 = ± 0.007"</p> <p>.315 - 1.180 = ± 0.015"</p> <p>1.180 - 4.724 = ± 0.020"</p>						<p>CAD FILE C:/122/122372.DWG</p>		<p>DWG. NO. 122372.DWG</p>		<p>REV. A</p>		<p>SCALE NA</p>	
<p>Amphenol Connex</p>						<p>TNC CRIMP PLUG (FOR RG-55/U,142A/U,223/U,400/U CABLE)</p>		<p>122372</p>		<p>REV. A</p>		<p>SCALE NA</p>	